

Lloyd's Register of Shipping.

SURVEYS FOR FREEBOARD.

(CONDITIONS OF ASSIGNMENT.)

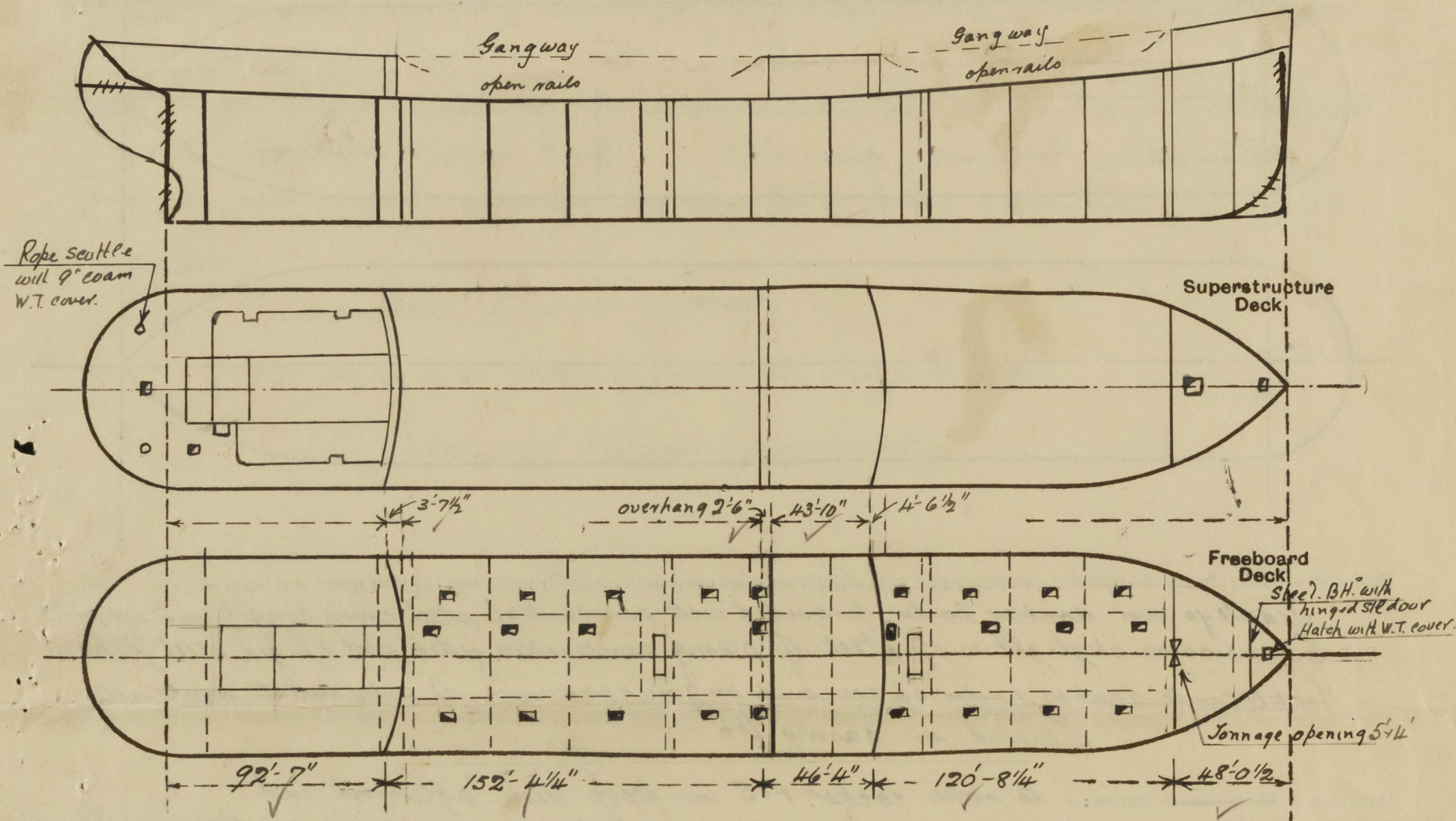
Index No. 36640
(For London Office only).

F. 29

STORO

Ship's Name Empire Diamond Port of Survey Belfast
 Official Number 168507 Surveyor's Signature Wm. Balfour
 Nationality and Port of Registry British Belfast Date of Survey during construction
HABNOSAND

Disposition and dimensions of superstructures, trunks, deckhouses and machinery casings to be inserted in the diagrams and tabular statement:—



Particulars of Superstructures, Trunks, Casings, Deckhouses.

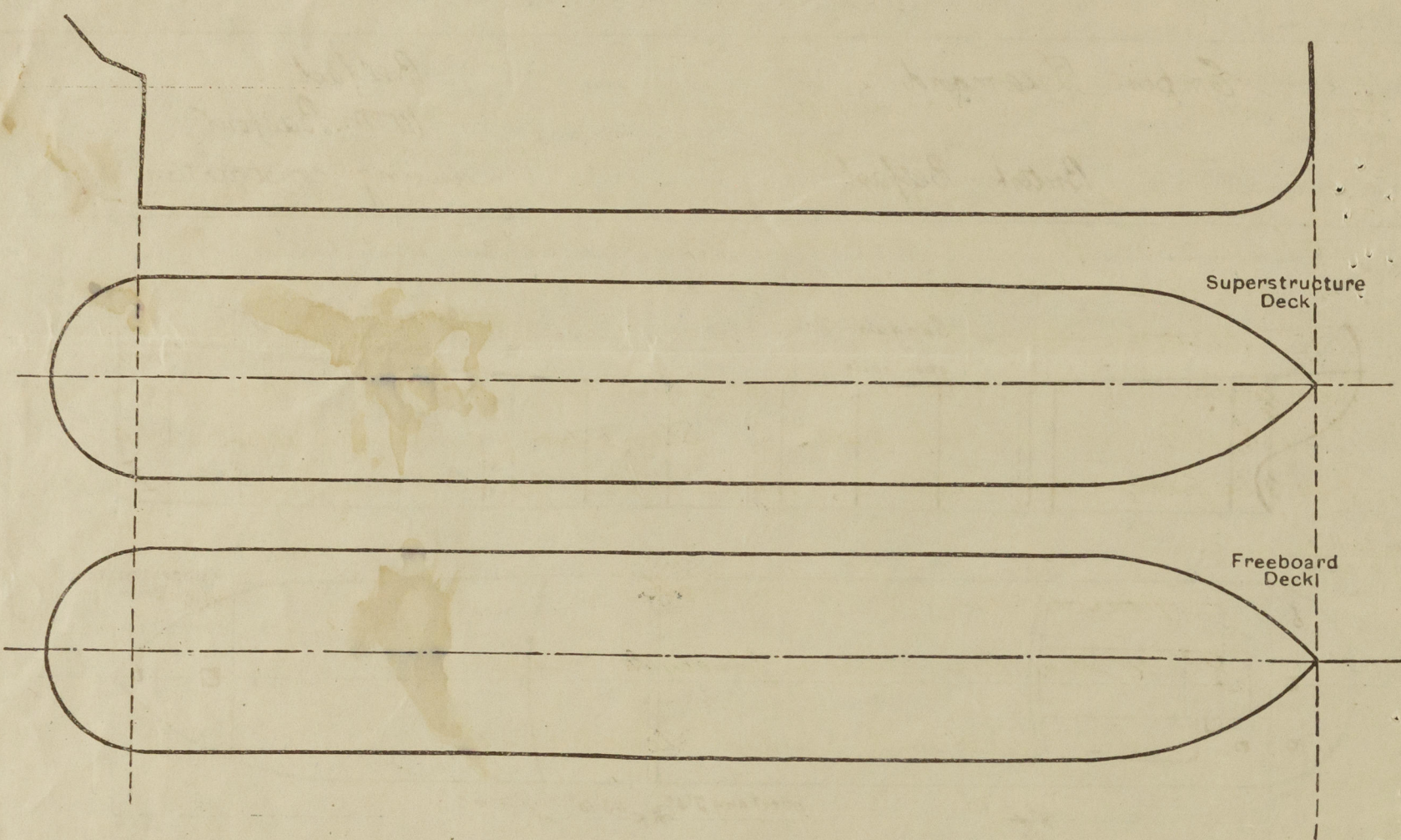
	Coaming	Plating	Stiffeners	Spacing	End Attachments of Stiffeners	Size of Openings	Height of Sills	Height of Casings
Poop Bulkhead ...	44	44	10 x 3 1/2 x 7/16 BA	30"	welded top & bottom	20'5"0" x 9'6"	18"	7'6"
Raised Quarter Deck Bulkhead ...	✓							
Bridge, After Bulkhead ...	30	30	4 x 2 1/2 x 5/16	30"	none	20'5"3" x 3'0" 10'5"0" x 2'6"	18"	7'6"
Bridge, Forward Bulkhead ...	44	44	9 x 3 1/2 x 7/16 BA	30"	welded top & bottom	10'5"0" x 9'6"	18"	7'6"
Forecastle Bulkhead ...	30	30	4 x 2 1/2 x 5/16	30"	none	10'5"0" x 4'0" 10'5"0" x 2'6" 10'5"0" x 2'0"	13" 18"	7'6"
Trunk, Aft ...								
Trunk, Forward ...								
Exposed Machinery Casings on Freeboard or Raised Quarter Decks ...								
Exposed Machinery Casings on Superstructure Decks within deckhouse.	30	26	4 x 3 x 3/32	31	none	none		✓
Machinery Casings within Superstructures not fitted with Class I Closing Appliances ...								
Deckhouses on Flush Deck Ships ...								

Particulars of Closing Appliances (state if capable of being manipulated from both sides).

Poop Bulkhead ...	Hinged steel W.T. doors operated both sides ✓
Raised Quarter Deck Bulkhead ...	✓
Bridge, After Bulkhead ...	one hinged steel W.T. door * Two portable steel stiffened plates secured by hook bolts ✓
Bridge, Forward Bulkhead ...	Hinged steel W.T. door operated both sides ✓
Forecastle Bulkhead ...	One hinged steel W.T. door (to pump room); one hinged steel door; one portable steel stiffened plate secured by hook bolts ✓
Exposed Machinery Casings on Freeboard or Raised Quarter Decks ...	✓
Exposed Machinery Casings on Superstructure Decks within deckhouse.	no openings ✓
Machinery Casings within Superstructures not fitted with Class I Closing Appliances ...	✓
Deckhouses on Flush Deck Ships ...	✓ * operated both sides ✓

PARTICULARS OF PROTECTION TO OPENINGS, ETC.

The following diagrams should be used to indicate the positions of cargo and coaling hatchways, gangway, cargo and coaling ports, ventilators, companionways, etc., which would affect the seaworthiness of the ship:—



Particulars of fiddle, funnel and ventilator coamings, engine room skylight and other openings in machinery casing tops and their means of closing:—

Fiddle over donkey boiler provided with substantial steel covers hinged and secured.
Engine room skylight is of steel of strong construction fitted with hinged steel flaps.
Ventilators to donkey boiler space and engine room are of substantial construction situated on casing top.

Particulars of Hatch Bunker Scuttles:— to rope locker P+S on poop deck, aftermost end.

The opening has a 9" B.A. coaming with flanged steel cover fitted with hemp packing secured by spindle, strong back and butterfly nut.

Particulars of Companionways:— One door in side bulkhead to pump room 5'0" x 2'0", sill 18", steel w.t. secured by toggle.
Access to pump room (cargo) in strong steel deckhouse, one each well, house 7'6" high, 32 plating stiffened with 6'3" x 30" B.A. spaced 27" to 30", deck 5'8" x 30" sills 18" hinged steel w.t. door, secured by toggles operated both sides.
Two doors at after end of deck house on poop deck and 4 doors on sides give access to freeboard deck and below opening 5'6" x 2'3" sills 18", hinged composite steel-wood doors of strong construction operated both sides.

Particulars of Ventilators in exposed positions on freeboard and superstructure decks:—

On fore castle deck 7 C 10" dia, 1 C 8" dia; 2 C 6" dia coam 36" rule thickness to spaces in fore castle and below freeboard deck 1 S.N.V. 8'4" cast steel 36".
On bridge deck 7 C 6" dia coaming 30" 32 to spaces in bridge, fitted with screw down mushroom cover.
On poop deck 2 C 10" dia; 6 C 6" dia coam 30" rule thickness to tween decks and steering gear 1 S.N.V. 8'4" cast steel 36" to upper lower tween decks.
Fore Well 2 C 24" dia derricks post ventilators to pump room efficiently supported.
Aft Well 2 C 24" dia derricks post ventilators to pump room efficiently supported.
Boat deck 6" dia, 8" dia, 10" dia; 12" dia ventilator coam 30" rule thickness to poop tween decks.
Boat ventilator on poop and fore provided with steel watertight covers or wood plugs canvas covers.
S. N. Ventilators provided with wood plugs.

Particulars of Air Pipes in exposed positions on freeboard, raised quarter, or superstructure decks:—

On fore castle deck 1 C 4" to fore peak; 4 C 4" to deep tank 30" high.
On freeboard deck fore well 2 C 3" to forward cofferdam carried up 6' ft in fore well and clipped knots.
After well 2 C 3" to aft cofferdam carried up 6' ft in fore well and clipped knots.
On poop deck 2 C 4" to oil fuel bunker; 2 C 2 1/2" to aft peak; 4 C 2 1/2" to F.W. tank 1 C 2 1/2" to rudder trunk; 1 C 2 1/2" to stem comp. All 30" high.
On casing top Air pipes 2 1/2" to 4" dia from tanks in Eng. Space. All 18" above casing top.
All air pipes provided with canvas cover or wire gauge.

Particulars of Gangway Cargo and Coaling Ports:—

None.

EMPIRE DIAMOND

Storo.

Particulars of Scuppers and Sanitary Discharge Pipes:—

From freeboard deck in wells scuppers cut through gunwale angle.
From fore castle space: overboard scupper with storm valves at ship's side.
Bridge deck space: Drainage by means of 1 1/2" holes in after bulk into after well.
Poop Spaces: Scupper from freeboard deck within poop led overboard with storm valves at ship's side; sanitary discharges led overboard below freeboard deck with storm valves at ship's side.
Upper Bridge: Sanitary discharges from accommodation led overboard above freeboard deck with storm valves at ship's side. Storm valves of gun metal or yellow metal.
Spaces below freeboard deck: scuppers led to eng. room bilges or forward to drain later.

Particulars of Side Scuttles:—

None below freeboard deck.

8" x 10" dia clear glass in fore castle, bridge + poop.

All fitted with hinged deadlights.

Vertical distance of Sill of lowest Side Scuttle above top of keel

None below freeboard deck.

Particulars of Guard Rails:—

In poop, bridge and fore castle and between bulwarks in wells 3' 8" high. 3 Rails: stanchions 4' 6" to 5' apart.

Particulars of Gangways, Lifelines, etc.:— Fore + aft gangway in wells 7' 0" high. Channel stringer 6' x 3' x 3/8" P.B. connected by 3' x 3' x 3/8" transverse angle spaced 4' 0" apart. Gangway plated 32 with rails 2 each side. Gangway supported by bracing to deck 4' x 4' x 1/2" angles spaced 8' 0" apart and spread 5' 3" transversely at deck. Supports braced transversely by 3' x 3' x 3/8" angle diagonals and longitudinally by ties 3' x 3' x 3/8" angles fitted diagonally in alternate spaces.

Particulars of Freeing Arrangements.

	Length of Bulwark	Height of Bulwark	Size of Freeing Ports	Number each side	Area each side	Rule area each side
After Well 152' 4 1/4"	at poop 15 ft at bridge 57 ft	3' 8"	3' 0" x 1' 3"	1 1	over 50% open rails	open rails for 1/2 length of upper part of lower deck.
Forward Well 120' 8 1/4"	at bridge 16 ft fore 27 ft	3' 8"	3' 0" x 1' 3"	1 1	over 50% open rails	

State position of each freeing port ... After Well:—

(F. and A. position and height above deck edge) Forward Well:—

State whether the freeing ports are fitted with shutters, bars, or rails, and give particulars of such:—

Additional area where sheer is less than standard.

PARTICULARS OF PROTECTION TO OPENINGS, ETC.

HATCHWAYS ON FREEBOARD AND SUPERSTRUCTURE DECKS										
			Idle deck		freeboard deck		Poop			
Description of Hatchway			Fore Peak	Fore Hold	Carriage tanks 27 off	cofferdams Q.F. bunkers		2 off		
Dimensions of Hatchway			30'x30"	8'x8"	4'6"x3'6"	24'x18"		39'x39"		
COAMINGS	{	Height above Deck ...	9" B.A.	30"	30"	6" ch		9" B.A.		
		Thickness { Sides ...	{ .46	.50	.50	.46	.46	.46		
		Ends ...								
		Stiffeners ...								
		Brackets, Stays ...								
HATCH BEAMS	{	Number								
		Spacing								
		Scantling and Sketch ...								
		Bearing Surface								
FORE AND AFTERS	{	Number								
		Spacing								
		Unsupported Lengths ...								
		Scantling* and Sketch ...								
		Bearing Surface								
HATCH COVERS	{	Material	Steel	Steel	Steel	Steel		Steel		
		Thickness50	Stiffened .50	.50	.50		.50		
		How fitted	Hinged	hinged	Hinged	Bolted		hinged		
		Bearing Surface ...	W.T.	W.T.	O.T.	O.T.		W.T.		
Spacing of Cleats			loggers	loggers	loggers	✓	loggers			
Number of Tarpaulins			18" apart	18" apart	5" apart	✓	18" apart			
<p>*Are wood fore and afters steel shod at all bearing surfaces? ✓</p> <p>Are battens and wedges efficient and in good condition? ✓</p> <p>Are tarpaulins in good condition and in accordance with rule requirements? ✓</p> <p>Are lashings provided in accordance with rule requirements? ✓</p>										

Particulars of any special features :—

Endorsement at first survey and at surveys for renewal of Certificate :—

The fittings and appliances are in accordance with the particulars shown on this form (or as now modified) and are in good condition.



© 2020

Lloyd's Register
Foundation