

Lloyd's Register of Shipping.

SURVEYS FOR FREEBOARD.

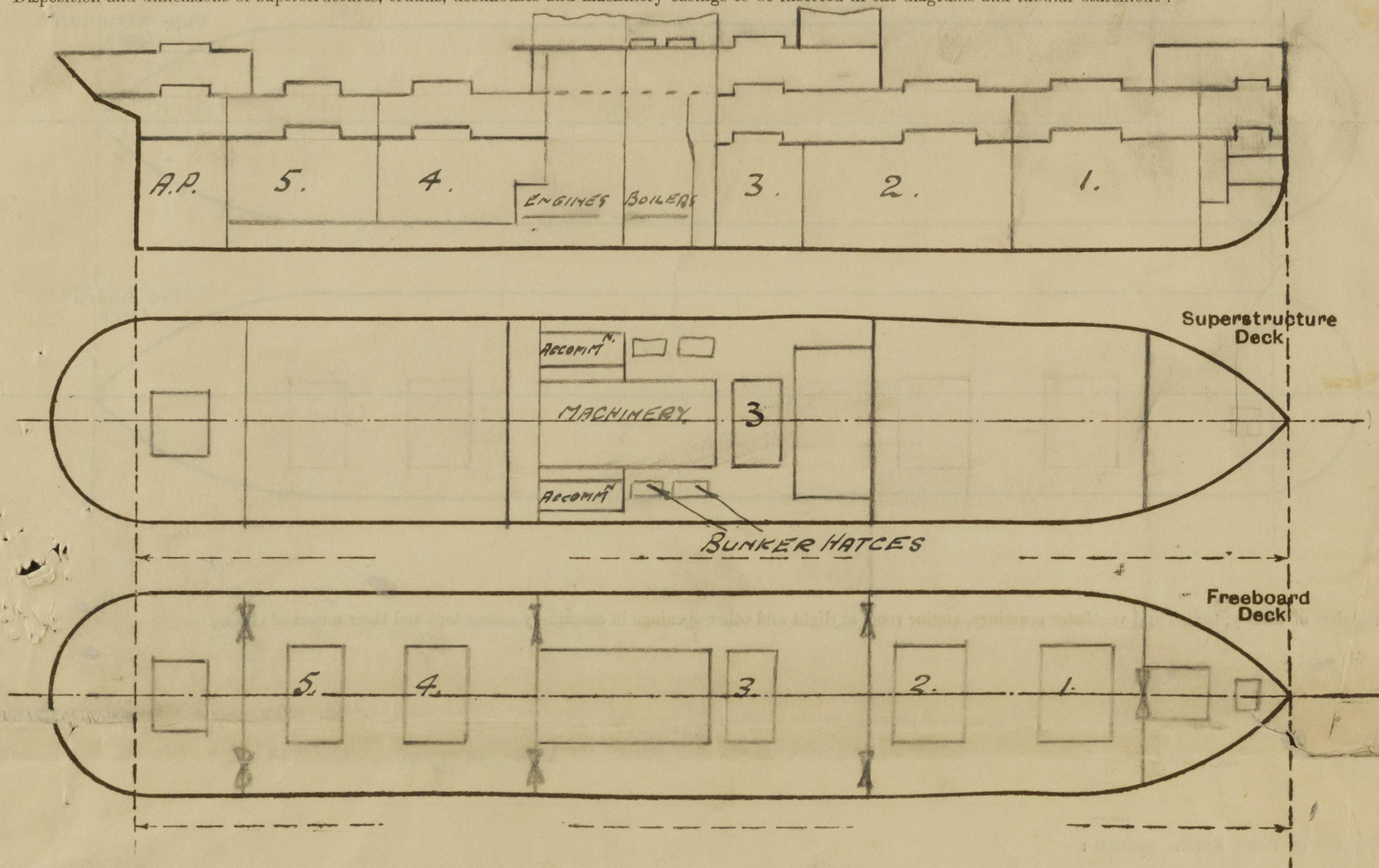
(CONDITIONS OF ASSIGNMENT.)

 Index No. 36512
 (For London Office only).
Ship's Name "BUCEGI"Port of Survey CalcuttaOfficial Number 174214Surveyor's Signature [Signature]

Nationality and Port of Registry

Date of Survey 25-2-41.

Disposition and dimensions of superstructures, trunks, deckhouses and machinery casings to be inserted in the diagrams and tabular statement:—



Particulars of Superstructures, Trunks, Casings, Deckhouses.

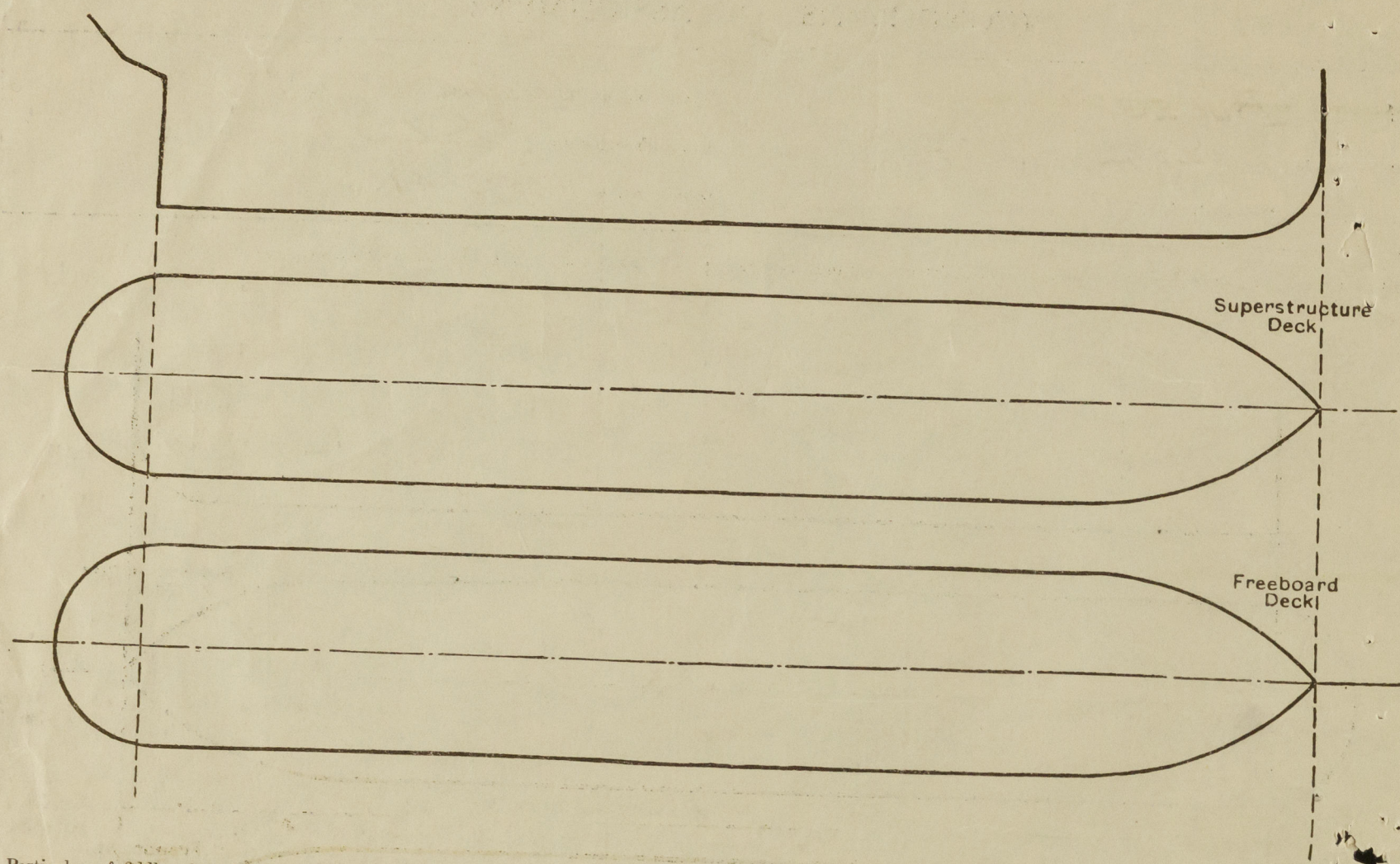
	Coaming	Plating	Stiffeners	Spacing	End Attachments of Stiffeners	Size of Openings	Height of Sills	Height of Casings
Poop Bulkhead	3'-6"	7/16"	6"x3"x3/8"	2'-6"	15" Brackets Top & Bottom	5'-0" x 3'-6"	18"	7'-6"
Raised Quarter Deck Bulkhead ...								
Bridge, After Bulkhead	4'-0"	5/16"	F & A BULKHEADS ✓		18" Brackets ✓	5'-0" x 3'-6"	18"	7'-6"
Bridge, Forward Bulkhead	5'-6"	1/2"	7"x3" B.A.	2'-6"	18" Brackets Top & Bottom	5'-0" x 3'-0"	18"	7'-6"
Forecastle Bulkhead	3 1/2 x 3 1/2	1/4"	7"x3"x5/16"	2'-6"	NIL	See NOTE BELOW.		
Trunk, Aft								
Trunk, Forward								
Exposed Machinery Casings on Free-board or Raised Quarter Decks ...	4'-0"	7/16"	3"x3"x3/8"	2'-6"	NIL	5'-0" x 2'-3"	18"	7'-6"
Exposed Machinery Casings on Super-structure Decks	2'-8"	5/16"	3"x3"x3/8"	1'-10" + 2'-6"	NIL	5'-0" x 2'-0"	18"	8'-0"
Machinery Casings within Superstructures not fitted with Class I Closing Appliances								
Deckhouses on Flush Deck Ships ...								

Particulars of Closing Appliances (state if capable of being manipulated from both sides).

Poop Bulkhead	2 1/2" storm boards in rivetted channels on port side of vessel. Hinged steel door capable of being operated from both sides on starboard side of vessel.
Raised Quarter Deck Bulkhead ...	
Bridge, After Bulkhead	2 1/2" storm boards in rivetted channels on both sides.
Bridge, Forward Bulkhead	Hinged steel doors with steel drops - can be operated from outside only. Provision originally made for storm boards in centre opening - now fitted with wood door containing glass - storm boards to be refitted.
Forecastle Bulkhead	
Exposed Machinery Casings on Free-board or Raised Quarter Decks ...	Steel doors fitted with locks & handles.
Exposed Machinery Casings on Super-structure Decks	Wood doors protected by accommodation - fitted with locks & handles.
Machinery Casings within Superstructures not fitted with Class I Closing Appliances	Steel doors fitted with locks & handles.
Deckhouses on Flush Deck Ships ...	

PARTICULARS OF PROTECTION TO OPENINGS, ETC.

The following diagrams should be used to indicate the positions of cargo and coaling hatchways, gangway, cargo and coaling ports, ventilators, companionways, etc., which would affect the seaworthiness of the ship:—



Particulars of fiddle, funnel and ventilator coamings, engine room skylight and other openings in machinery casing tops and their means of closing:—

Particulars of Flush Bunker Scuttles:—

4:— 20" Diameter scuttles fitted with securing lugs + slots
No securing chains fitted. X

Particulars of Companionways:—

Particulars of Ventilators in exposed positions on freeboard and superstructure decks:—

Particulars of Air Pipes in exposed positions on freeboard, raised quarter, or superstructure decks:—

Particulars of Gangway Cargo and Coaling Ports:—

Particulars of Scuppers and Sanitary Discharge Pipes:—

Particulars of Side Scuttles:—

Vertical distance of Sill of lowest Side Scuttle above top of keel

Particulars of Guard Rails:—

Particulars of Gangways, Lifelines, etc.:—

Life lines supplied and can be rigged by means of eye bolts in bulkheads.

Particulars of Freeing Arrangements.

	Length of Bulwark	Height of Bulwark	Size of Freeing Ports	Number each side	Area each side	Rule area each side
After Well						
Forward Well						

State position of each freeing port (After Well:—
(F. and A. position and height above deck edge) Forward Well:—

State whether the freeing ports are fitted with shutters, bars, or rails, and give particulars of such:—

Additional area where sheer is less than standard.

PARTICULARS OF PROTECTION TO OPENINGS, ETC.

HATCHWAYS ON FREEBOARD AND SUPERSTRUCTURE DECKS.									
Description of Hatchway	Nº1	Nº2	Nº3	Nº4	Nº5		
Dimensions of Hatchway	28'2" x 16'0"	32'6" x 16'0"	10'10" x 16'0"	28'2" x 16'0"	28'2" x 16'0"	Bunker Hatches On Bridge Deck.	
COAMINGS	Height above Deck	...	3'0"			SAME	SAME	each P & S Sides.	
	Thickness	{ Sides	1/2" 7/16	SAME		AS	AS		8'3" x 4'0" x 2'6" high
		{ Ends	X	AS					7'0" x 4'0" x 2'6" high
	Stiffeners	...	2" dia	Nº1		Nº1	Nº1		2 3/4" Pine covers - cleats 22"
HATCH BEAMS	Brackets, Stays	...	8'2" PITCH					spacing - ribs under 3/8" thick	
	Number	...	2	3		2	2	3" bearing surface.	
	Spacing	...	9'5 1/2"	8'2"		9'5 1/2"	9'5 1/2"	Two tarpaulins.	
	Scantling and Sketch	...	ANGLE 3 1/2 x 3 1/2						
FORE AND AFTERS	CENTRE PLATE	28'4" x 16'0"		SAME AS		SAME AS	SAME AS	Hatch on Poop.	
	Angles	4" x 3"		Nº1		Nº1	Nº1		8'3" x 10'0" - One F & A
	Bearing Surface	...	3"	3		3	3		beam. Hatches, coamings
									stiffening down arrangements
HATCH COVERS	Material	...	PINE.					similar to those on freeboard	
	Thickness	...	2 3/4"					deck.	
	How fitted	...	THWARTSHIPS.						
	Bearing Surface	...	3"					Hatches in Fore-castle	
Spacing of Cleats	22" x 24"						
Number of Tarpaulins	3						
*Are wood fore and afters steel shod at all bearing surfaces? <input checked="" type="checkbox"/>									
Are battens and wedges efficient and in good condition? <input checked="" type="checkbox"/>									
Are tarpaulins in good condition and in accordance with rule requirements? <input checked="" type="checkbox"/>									
Are lashings provided in accordance with rule requirements? <input checked="" type="checkbox"/>									

Particulars of any special features:—

Endorsement at first survey and at surveys for renewal of Certificate:—

The fittings and appliances are in accordance with the particulars shown on this form (or as now modified) and are in good condition.



© 2020

Lloyd's Register Foundation