

Lloyd's Register of Shipping.

SURVEYS FOR FREEBOARD.

(CONDITIONS OF ASSIGNMENT.)

Dundee Rpt No 9275.

Ship's Name

RUBYSTONE
"EMPIRE DAGON" ex "MONTE PIANA"

Port of Survey

DUNDEE

Official Number

174207

Surveyor's Signature

R.D. Campbell

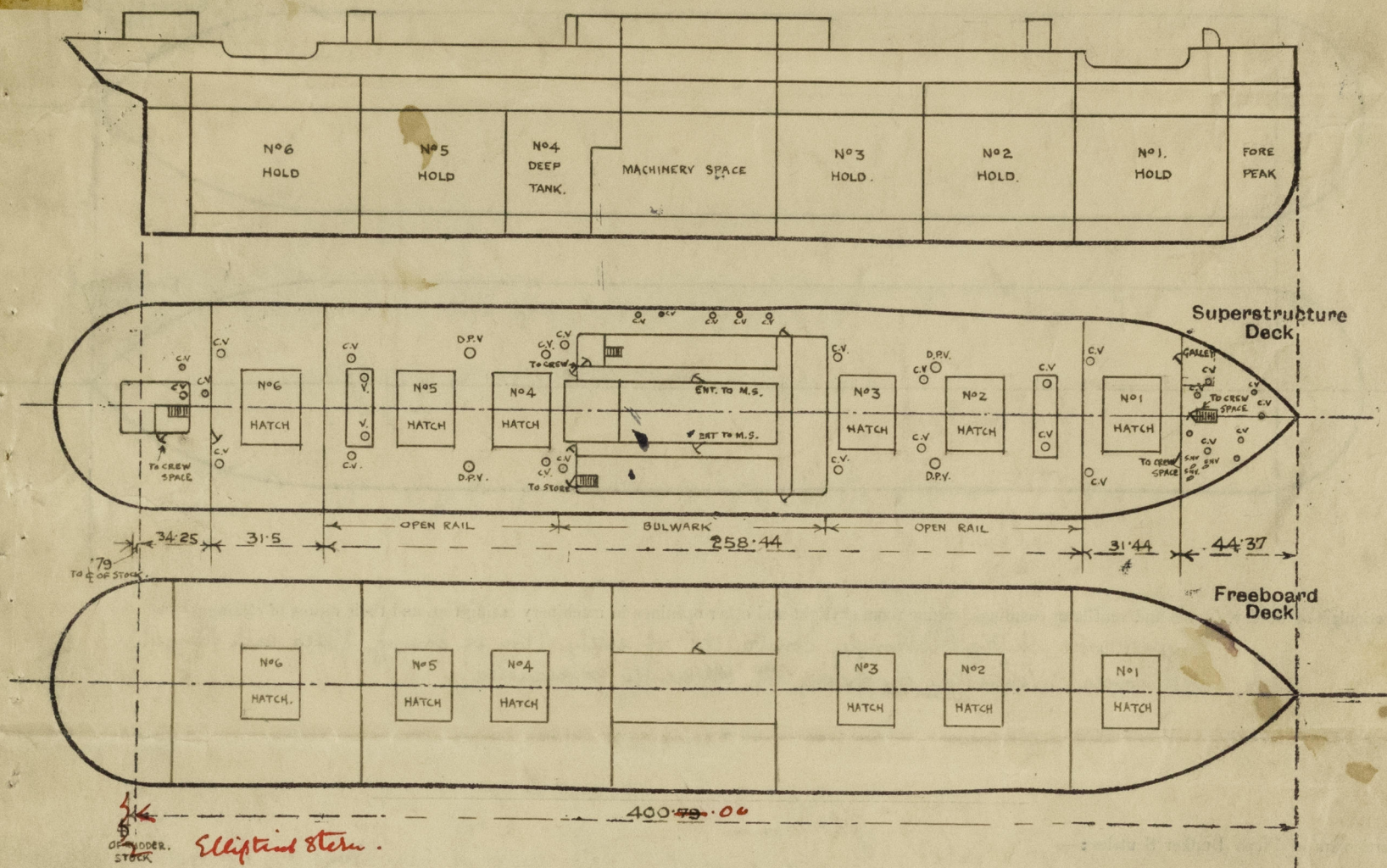
Nationality and Port of Registry

BRITISH ADEN.

Date of Survey

23RD, 24TH, & 25TH DECEMBER, 1941.

Disposition and dimensions of superstructures, trunks, deckhouses and machinery casings to be inserted in the diagrams and tabular statement:

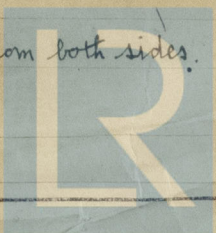


Particulars of Superstructures, Trunks, Casings, Deckhouses.

	Coaming	Plating	Stiffeners	Spacing	End Attachments of Stiffeners	Size of Openings	Height of Sills	Height of Casings
Poop Bulkhead ...	38	31	3" x 3" x 3/8	31"	BKTS TOP & BOTTOM.	4' 6" x 3' 0"	24"	8' 0"
Raised Quarter Deck Bulkhead ...								
Bridge, After Bulkhead ...	38	31	6 1/2 x 3 1/2 x 3/8	30"	BKTS AT BOTTOM.	NONE	—	8' 0"
Bridge, Forward Bulkhead ...	44	38	9 x 3 1/2 x 1/2 B.A.	31"	BKTS TOP & BOTTOM.	NONE	—	8' 0"
Forecastle Bulkhead ...	38	31	7 x 3 1/2 x 7/16	30"	—	4' 6" x 3' 0" 5' 2" x 2' 0"	24" 14"	8' 0"
Trunk, Aft ...								
Trunk, Forward ...								
Exposed Machinery Casings on Freeboard or Raised Quarter Decks ...								
Exposed Machinery Casings on Superstructure Decks ...								
Machinery Casings within Superstructures not fitted with Class I Closing Appliances ...	—	25	FLANGED PLATES 3" FL.	27"	—	5' 6" x 2' 3" 5' 0" x 2' 1"	16" 15"	8' 0"
Deckhouses on Flush Deck Ships ...								

Particulars of Closing Appliances (state if capable of being manipulated from both sides).

Poop Bulkhead ...	Hinged W.T. steel door capable of being operated from both sides. ✓
Raised Quarter Deck Bulkhead ...	
Bridge, After Bulkhead ...	none. no openings.
Bridge, Forward Bulkhead ...	none. no openings.
Forecastle Bulkhead ...	Hinged W.T. steel doors capable of being operated from both sides ✓
Exposed Machinery Casings on Freeboard or Raised Quarter Decks ...	
Exposed Machinery Casings on Superstructure Decks ...	Hinged wood doors capable of being operated from both sides. ✓
Machinery Casings within Superstructures not fitted with Class I Closing Appliances ...	
Deckhouses on Flush Deck Ships ...	

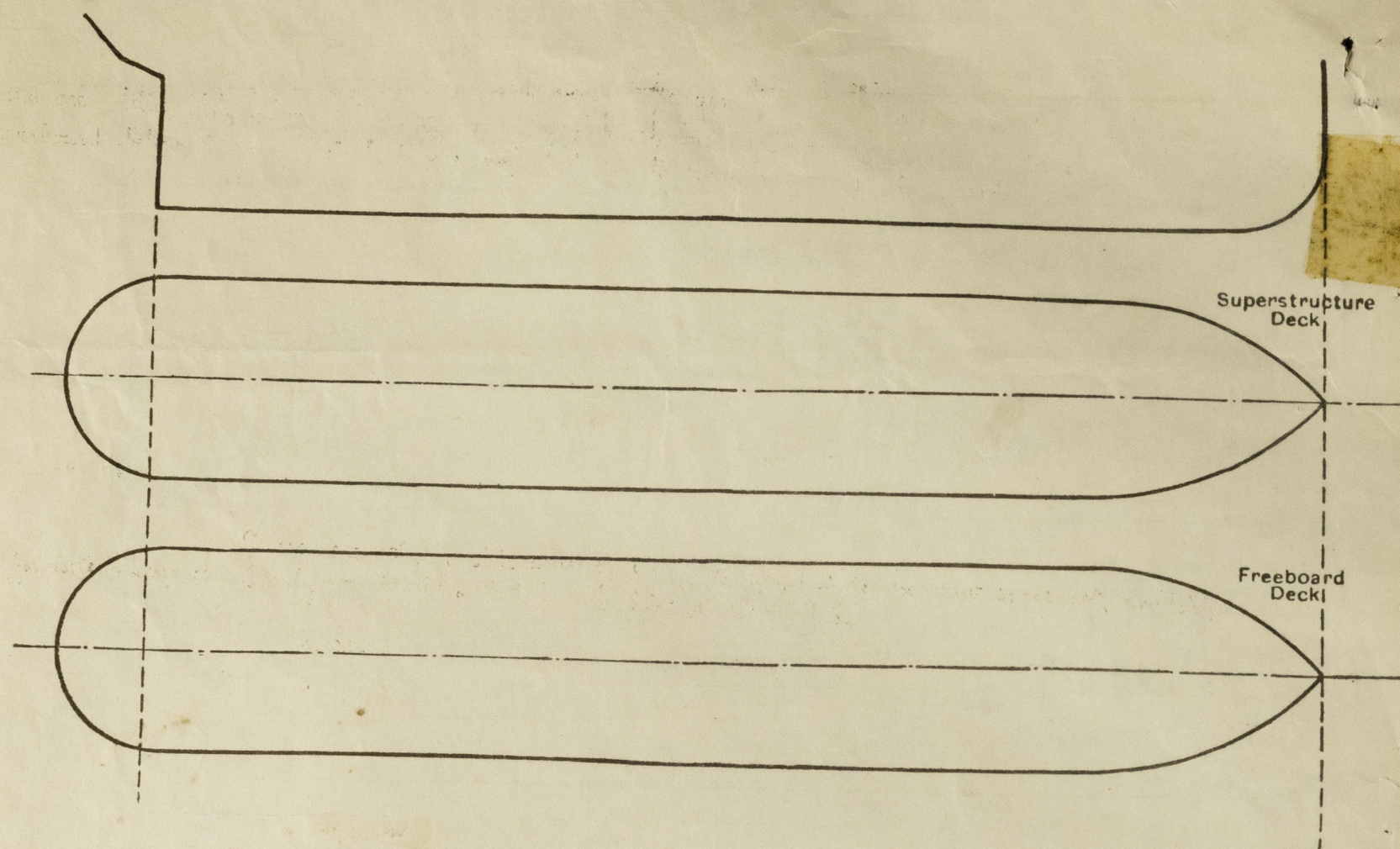


© 2020

Lloyd's Register
Foundation

003357-003368-0205 1/2

The following diagrams should be used to indicate the positions of cargo and coaling hatchways, gangway, cargo and coaling ports, ventilators, companionways, etc., which would affect the seaworthiness of the ship:—



Particulars of fiddle, funnel and ventilator casings, engine room skylight and other openings in machinery casing tops and their means of closing:

Engine room skylight strongly constructed of steel on top of casing fitted with hinged steel covers. Ventilators on casing top efficiently constructed. ✓

Particulars of Flush Bunker Scuttles:—

Particulars of Companionways :—

Entrance to crew space in Fore. Companion on Fore strongly constructed of steel with steel door, opening 4'-6" x 2'-3" sill 24" ✓
Entrance to ratings in Bridge Wren deck wood door opening 5'-6" x 2'-3" sill 16" ✓
Entrance to store in Bridge Wren deck steel door 5'-0" x 2'-1" sill 16" ✓
Entrance to crew space in Fore. steel door opening 5'-1" x 2'-1" sill 15" ✓

Particulars of Ventilators in exposed positions on freeboard and superstructure decks :-

FOUR VENTILATORS IN EXPOSED POSITIONS ON TREEBOARD AND SUPERSTRUCTURE DECKS									
<u>FOCLE DECK</u>	2	Cowl Vents	15" dia	coming	56" x 36 & 1/2"	to	N°1 Hold & Jun Dr	suitably	stayed
	2	"	9 1/2"	"	36" x 1/4"	to	gryde space		
	2	"	7 1/2"	"	10" x 3/16"	to	crew space		
	3	Swan neck	4"	"	10"	to	crew		
	2	Mushroom Vents	6"	screw down	"	"	"		
<u>FORD WELL</u>	2	cowl vents	15" dia	coming	12-0" x 5/8"	to	N°1 Hold & Jun Dr	suitably	stayed
<u>BRIDGE DECK</u>	2	"	19"	"	8-6" x 3/8"	"	N°2	"	"
	2	Gerrick P. Vents	24"	"	"	"	N°2	"	"
	2	cowl vents	15"	"	18" x 5/16"	"	N°3	"	on mast house
	2	"	19"	"	18" x 3/8"	"	N°3	"	"
	2	"	15"	"	31" x 5/8"	"	N°4	Jun Dr	
	2	"	11"	"	31" x 1/4"	"	N°4	Deep Tank	
	3	"	9 1/2"	"	24" x 1/4"	to	ratings & store		
	2	"	5 1/2"	"	24" x 1/4"	"	"		
	2	Gerrick P. Vents	24"	"	"	"	N°5	Hold & Jun Dr	suitably stayed
	2	Cowl vents	19"	"	18" x 5/16"	"	N°5	"	on mast house
<u>AFT WELL</u>	2	"	15"	"	18" x 5/16"	"	N°6	"	on mast house
	2	"	15"	"	12-2" x 3/8"	"	N°6	"	suitably stayed

POOP DECK - 1 cowl vent 9" dia. coaming 8'-0" x 1/4" to tunnel f. ^{protected by nose}
 1 " " 9" " " 16" x 1/4" to crew space
 1 " " 7 1/2" " " 10" x 1/4" " " "
 2 mushroom vents 6" dia screw down to crew space
 1 " " 7" " to magazine.
 stayed.

Wood plugs & canvas covers
fitted to vent coumings.

Particulars of Air Pipes in exposed positions on freeboard, raised quarter, or superstructure decks :

FOCLE DECK		positions on the board, raised quarter, or superstr	
1	5 N	4" dia	an x filling pipe to 2
1	"	5 x 3"	18" to fore peak.
1	"	6" dia	18" to No 1 D.B. Tank.
BRIDGE DECK			
2	"	6"	2' 3" " " No 2 " " "
2	"	6"	19" " " No 3 " " "
6	"	4"	13" " " Engine space.
2	"	6"	19" " " No 4 D.B. Tank
2	"	6"	19" " " No 5 " " "
2	"	6"	19" " " No 6 " " "
2	"	4 1/2"	21" " " No 7 " " "

Air pipes fitted with wire gauge
Wire gauge ~~is to~~ be renewed. ✓

Particulars of Gangway Cargo and Coaling Ports:—

bolcular bolted plate amidships 12 dia. about 12" below freeboard deck (P & S)
now made wafer light.

Particulars of Scuppers and Sanitary Discharge Pipes:— Sanitary discharges from W.C.s discharge overboard below freeboard deck ^{from a side or stern Redge} and are fitted with storm valves at ships side. Wash basin discharges in accommodation amidships discharge overboard below freeboard deck & are not fitted with storm valves at ships side.

Particulars of Side Scuttles:— These are 10" dia side scuttles fitted to ship's side in crew space aft, amidships and in forecabin. Scuttles strongly constructed & fitted with hinged deadlights. ✓

There are no side scuttles below Freeboard Deck. ✓

Vertical distance of Sill of lowest Side Scuttle above top of keel 33.08 feet.

Particulars of Guard Rails :—

Guard rails on Fore deck 3'-3" high 3 rods. ✓
Guard rails on Bridge deck 3'-3" high 3 rods
Bulkhead on Bridge deck 4'-0" high suitably stayed ✓
Guard rails on Poop deck 3'-3" high 3 rods. ✓

Particulars of Gangways, Lifelines, etc.:-

Gangway at aft well poop to bridge deck	2'0" wide	3'3" high	1 chain
Gangway at fore well bridge to fore deck	2'0" wide	3'3" high	1 chain

Provision has been made for fitting lifelines fore & aft.

Particulars of Freeing Arrangements.						
	Length of Bulwark	Height of Bulwark	Size of Freeing Ports	Number each side	Area each side	Rule area each side
After Well	31.5	4' 0"	3' 6" x 18"	2	10.5 ✓	9.65
Forward Well	31.44	3' 10 1/2"	3' 8" x 21 1/2"	2	14.3 ✓	9.64

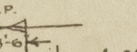
State position of each freeing port ... (After Well :—
 State position and height above deck edge) (Forward Well :—

9' above deck.
 18' above deck.

(F. and A. position and height above deck edge) Forward Well:— 13.8 14.7

State whether the freeing ports are fitted with shutters, bars, or rails, and give particulars of such:—

Additional area where sheer is less than standard.



PARTICULARS OF PROTECTION TO OPENINGS, ETC.

HATCHWAYS ON FREEBOARD AND SUPERSTRUCTURE DECKS.

HATCHWAYS ON FREEBOARD AND SUPERSTRUCTURE DECKS.												
Description of Hatchway	Nº1.	Nº2	Nº3	Nº4	Nº5	Nº6	SMALL HATCH ON POOP DX TO MAGAZINE.	SMALL HATCH ON FORE DX TO " SPACE	
Dimensions of Hatchway	22'-6" x 23'-6"	22'-6" x 23'-6"	22'-6" x 23'-6"	22'-6" x 23'-6"	22'-6" x 23'-6"	22'-6" x 23'-6"	2'-7 1/2" x 1'-11"	20' x 20"	
COAMINGS	{	Height above Deck	...	3'-6"	3'-6"	3'-6"	3'-6"	3'-6"	3'-6"	12" x 5/16"	19" x 5/16"	
		Thickness	...	44	44	44	44	44	44	COAMING	COAMING.	
		Stiffeners	...	7/2 x 3/4 x 32 BA	7/2 x 3/4 x 32 BA	7/2 x 3/4 x 32 BA	7/2 x 3/4 x 32 BA	7/2 x 3/4 x 32 BA	7/2 x 3/4 x 32 BA			
		Brackets, Stays	...	2. STAYS	2. STAYS	2. STAYS	2. STAYS.	2. STAYS.	2. STAYS.			
HATCH BEAMS	{	Number	...	3	3	3	3	3	3	NONE	NONE	
		Spacing	...	5'-7 1/2"	5'-7 1/2"	5'-7 1/2"	5'-7 1/2"	5'-7 1/2"	5'-7 1/2"			
		Scantling and Sketch	...	21" x 32 WITH 4 3/4 x 3 1/2 x 44 DBL. ANGLE TOP & BOTTOM.	21" x 32 WITH 4 3/4 x 3 1/2 x 44 DBL. ANGLE TOP & BOTTOM.	21" x 32 WITH 4 3/4 x 3 1/2 x 44 DBL. ANGLE TOP & BOTTOM.	21" x 32 WITH 4 3/4 x 3 1/2 x 44 DBL. ANGLE TOP & BOTTOM.	21" x 32 WITH 4 3/4 x 3 1/2 x 44 DBL. ANGLE TOP & BOTTOM.	21" x 32 WITH 4 3/4 x 3 1/2 x 44 DBL. ANGLE TOP & BOTTOM.			
		Bearing Surface	...	3"	3"	3"	3"	3"	3"			
FORE AND AFTERS	{	Number	...							NONE	NONE	
		Spacing	...									
		Unsupported Lengths	...	NONE	NONE	NONE	NONE	NONE	NONE			
		Scantling* and Sketch	...									
		Bearing Surface	...									
HATCH COVERS	{	Material	...	W.W.	W.W.	W.W.	W.W.	W.W.	W.W.	STEEL HINGED	STEEL	
		Thickness	...	3"	3"	3"	3"	3"	3"	W.T.	W.T.	
		How fitted	...	F & A	F & A	F & A	F & A	F & A	F & A	COVER	COVER	
		Bearing Surface	...	2 1/2"	2 1/2"	2 1/2"	2 1/2"	2 1/2"	2 1/2"			
Spacing of Cleats	2'-0"	2'-0"	2'-0"	2'-0"	2'-0"	2'-0"	SECURED BY TURNBUCKLES	SECURED BY TURNBUCKLES	
Number of Tarpaulins	3	3	3	3	3	3			
*Are wood fore and afters steel shod at all bearing surfaces?												
Are battens and wedges efficient and in good condition? YES												
Are tarpaulins in good condition and in accordance with rule requirements? YES												
Are lashings provided in accordance with rule requirements? YES												
These Lashing bars fitted to No 1 Hatchway at 1000. 5/6/62												

Particulars of any special features:—

Endorsement at first survey and at surveys for renewal of Certificate:—

The fittings and appliances are in accordance with the particulars shown on this form (or as now modified) and are in good condition.