

S.S. N° 974.

SCALE 1" = 1 FOOT.
DETAILS AS INDICATED

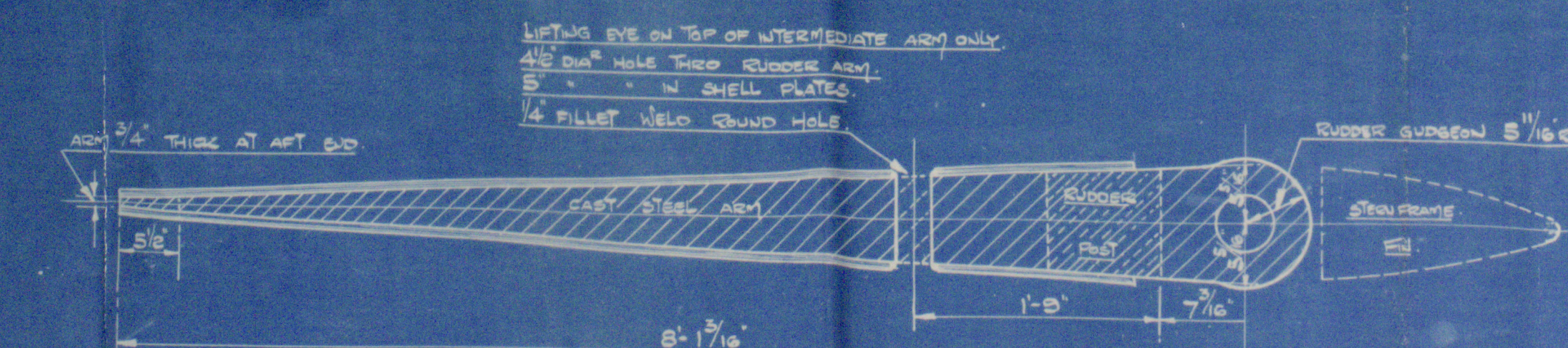
RUDDER STOCK:- BEST QUALITY FORGING.

RUDDER :- BEST QUALITY STEEL CASTING

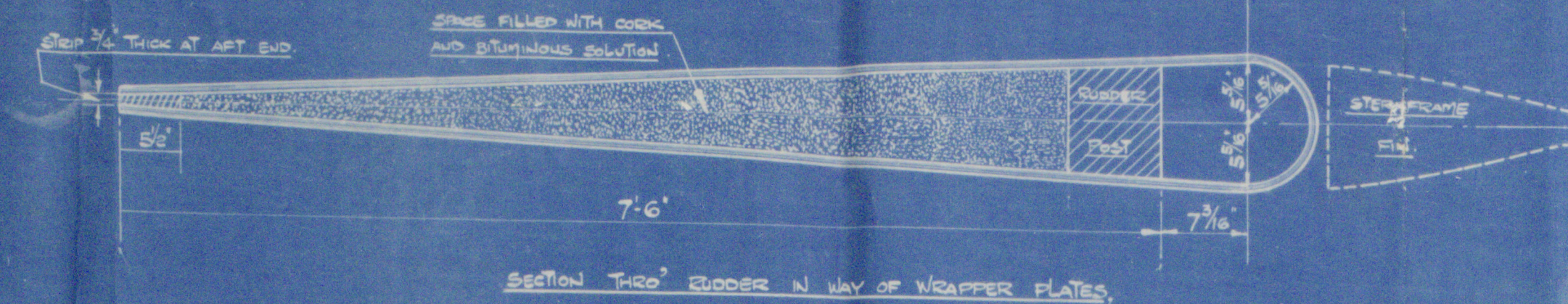
Dimensions: 485'-0" P.P. to 50'-0" M.O. 57'-0" M.O. to Ground line. 25'-0" M.O. to Upper Deck.
To Class 100 A.I. With Freeboard at LVL 1000 special survey.
Lead cover 20'-4" actual ship speed 10 1/2 knots. (LVL 1000 M.O. speed for Rubber IF wood)
Total immersed area of Rubber Framed Floor area of tank 151.24 sq ft
Centre of Gravity of Area from Centre Line of Rattles 4.349 ft
A.D. = 57.0 Dia" of Rubber Stock = 18" Dia"
Kevlar etc. to be put in Rubber Stock to that unless given
Rubber Stock to be accurately taped to dimensions given
Rubber Framing to be accurately cut to shape as per details
Girt holes to be bored plus the same, size must not be less than given
Rubber Mat to be given given quantities, any excess over 20% weight will not be paid
Pattern of Rubber Framing to be approved by shipyarders previous before casting

NOTE - ALL PINTLES TO BE SUPPLIED COMPLETE
BY RUBBER MAKERS, PINTLES TO BE OF STEEL
MADE & EFFICIENTLY FITTED AS PER DETAILS.
BRASS BUSHES MUST BE TURNED IN ONE PIECE
AND PROPERLY SHOWN ON PINTLES.

SECTION THREE' TOP RUDDER ARM



SECTION THRO' INTERMEDIATE RUDDER ARM



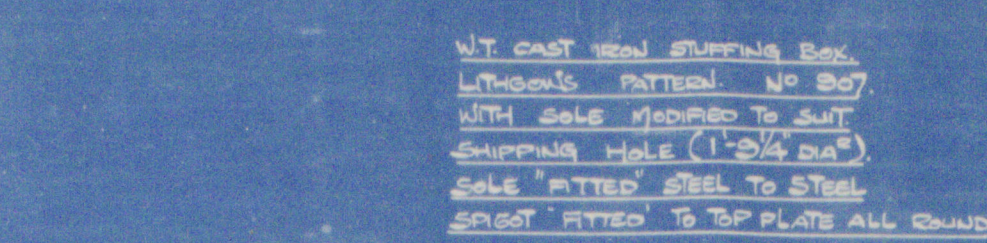
SECTION THRO' RUDDER IN WAY OF WRAPPER PLATES

SECTION THRO' BOTTOM RUDDER ARM

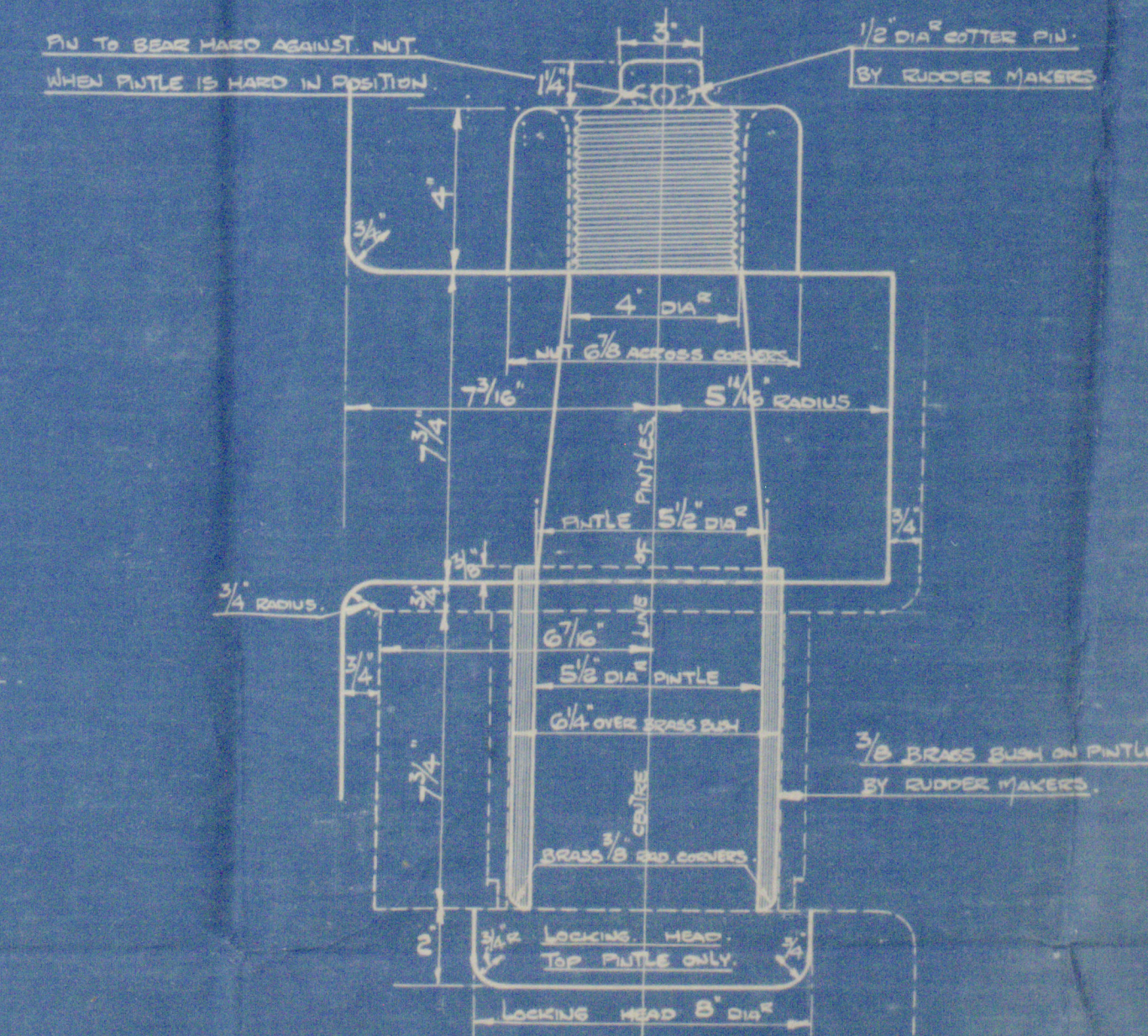
ELEVATION of RUDDER
WITH STARRD PLATE OFF

NOTE - KEYWAYS CUT SQUARE ENDED.
CORNERS NOT TO EXCEED $\frac{1}{4}$ " RADIUS.
DEPTH OF KEYS MEASURED
AT SIDES OF KEYWAY.

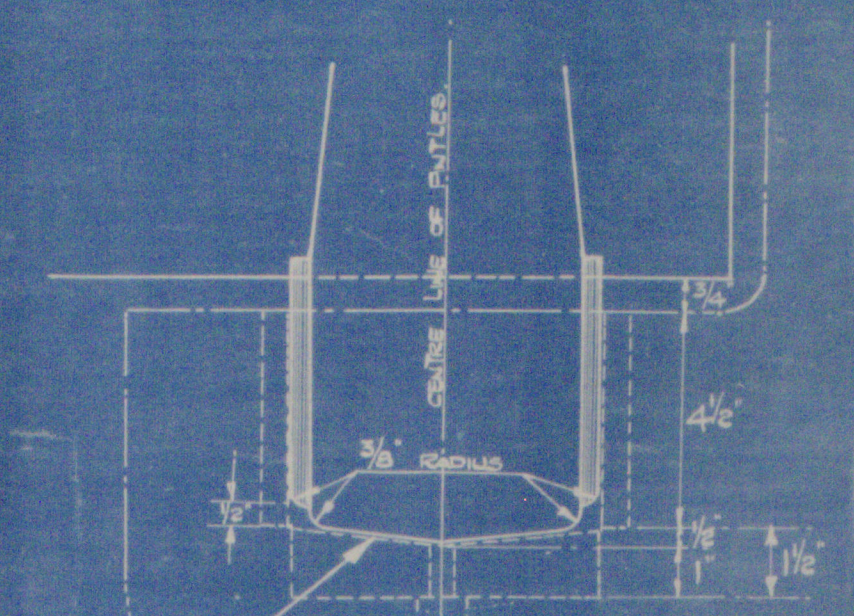
HEIGHT OF DECK ABOVE BASE LINE OF SHIP - 32'-7³/₈"
HEIGHT OF RUDDER STOCK ABOVE DECK - 3'-5³/₈"
TOTAL LENGTH OF RUDDER ABOVE BASE LINE - 36'-11¹/₈"
HEIGHT TO BOTTOM OF RUDDER STOCK - 20'-2¹/₂"
TOTAL LENGTH OF RUDDER STOCK - 15'-6⁵/₈"



NOTE: WHEN FLOATING RIGGER
SLIGHT CLEARANCE TO BE LEFT
BETWEEN BOTTOM OF BOTTOM PANTLE
& BEARING DISC TO ENSURE THAT CHAIRS



DETAIL OF ALL RIDGER GUDGEONS & FANTLES
(EXCEPT BOTTOM GUDGEON).
SCALE 1/4 FULL SIZE



DETAIL OF BOTTOM GUDGEON & BEARING PINTLE
SCALE 1/4" FULL SIZE
DETAILS NOT INDICATED SIMILAR TO SKETCH ABOVE

CONSTRUCTION NOTE 4: EXPOSURE FRAME TO BE LAID ON TOP OF BOTTOM PLATE. ALL LOWER SURFACES OF EXPOSURE TO BE COATED WITH BITUMINOUS SOLUTION, COING PRACTICE TO BE FILLED IN THE FIVE COMPARTMENTS TO TOP PLATE LEVEL.

TOP PLATE LAID IN POSITION, EXPOSED SURFACE COMPLETELY COVERED & SCAFFOLD, BITUMINOUS SOLUTION PUMPED INTO EACH COMPARTMENT UNTIL FULL, EXPOSED SURFACES COATED WITH SLURRY MIXES & RUST WELD SOUND LATHING OVER, REINFORCEMENT BARS FITTED IN POSITION & SHELVED AS INDICATED.

APPROVED
LLOYD'S REGISTER OF SHIPPING
James R. Clark 24/12/11

24/12/11

003341-003348-0027

LITHGOWS LTD

⑥

N0974

RUDDER

S.S. "TRIONA"

G.R.K. FIRST ENTRY REPORT

No. 22226

003341-003348-0027



© 2021

Lloyd's Register
Foundation