

193 JAN 1943

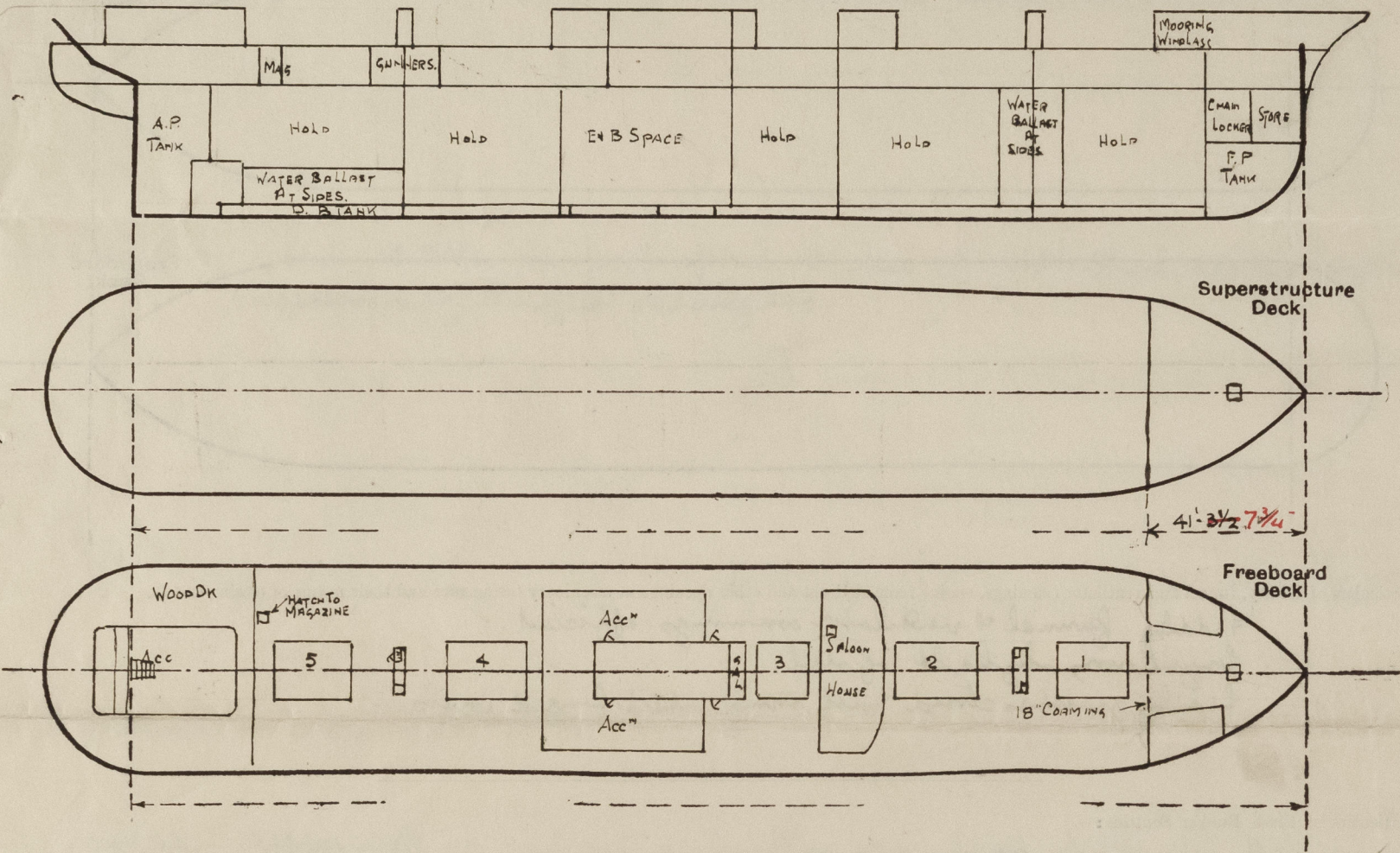
Index No. 37128
(For London Office only).

Lloyd's Register of Shipping.
SURVEYS FOR FREEBOARD.
(CONDITIONS OF ASSIGNMENT.)

GRK. REPORT N° 22143.

Ship's Name Iriona Port of Survey Greenock
Official Number ✓ 168387 Surveyor's Signature Remedy High
Nationality and Port of Registry British. London Date of Survey while building 1942

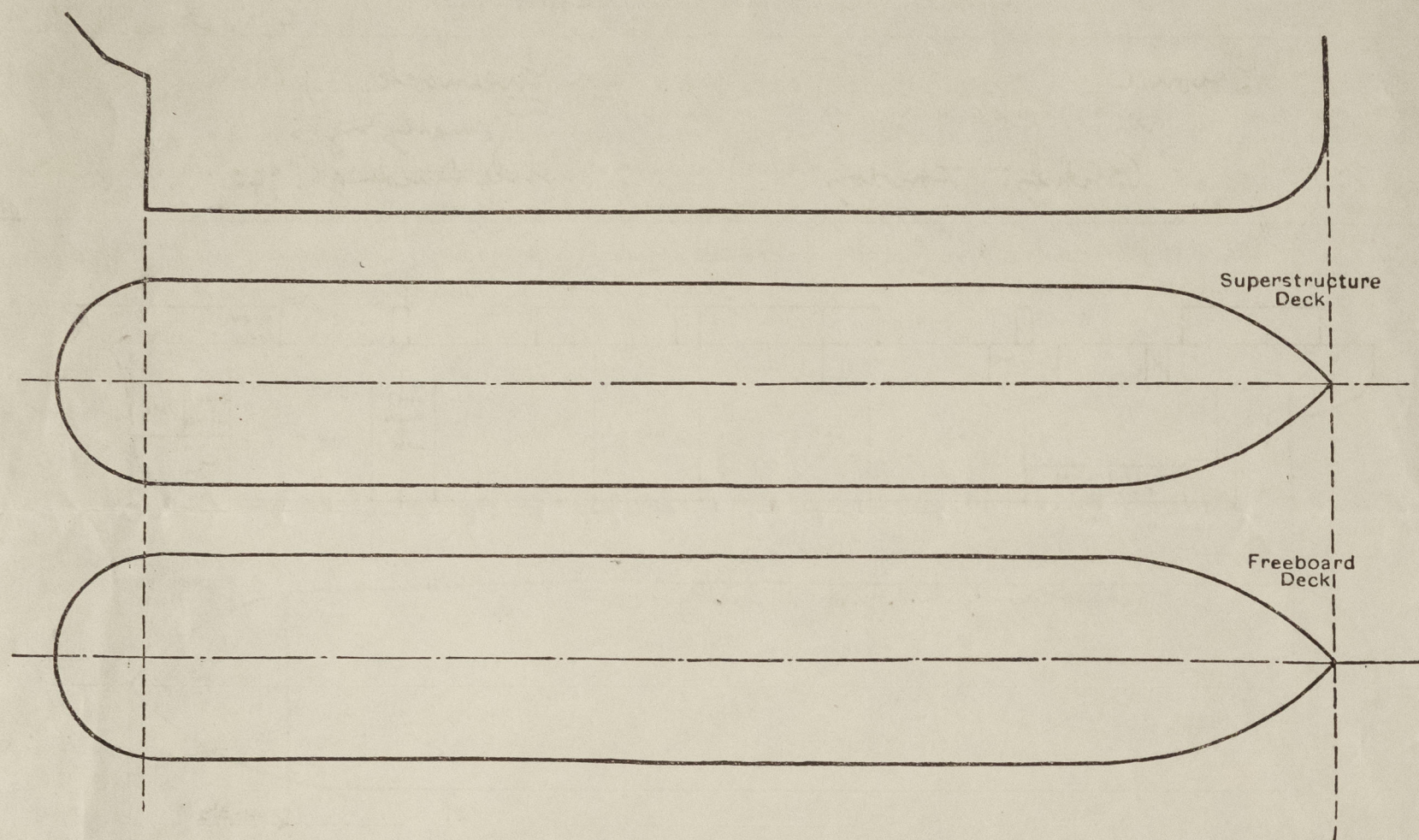
Disposition and dimensions of superstructures, trunks, deckhouses and machinery casings to be inserted in the diagrams and tabular statement : —



Particulars of Superstructures, Trunks, Casings, Deckhouses.								
	Coaming	Plating	Stiffeners	Spacing	End Attachments of Stiffeners	Size of Openings	Height of Sills	Height of Casings
Poop Bulkhead ...	✓							
Raised Quarter Deck Bulkhead ...	✓							
Bridge, After Bulkhead ...	✓							
Bridge, Forward Bulkhead ...	✓							
Forecastle Bulkhead30	.30	3 x 3 x .30	30"	None	Open At Centre	✓	9'-6"
Trunk, Aft ...	✓							
Trunk, Forward ...	✓							
Exposed Machinery Casings on Freeboard or Raised Quarter Decks34	.34	3 1/2 x 3 x .40	30"	Bckts At Top	5 x 2'-3"	18"	7-6
Exposed Machinery Casings on Superstructure Decks ...	✓							
Machinery Casings within Superstructures not fitted with Class I Closing Appliances32	.32	3 x 3 x .30	30"	Bckts At Top	5 x 2'-6"	18"	7-6
Deckhouses on Flush Deck Ships ...	✓							
Particulars of Closing Appliances (state if capable of being manipulated from both sides).								
Poop Bulkhead ...	✓							
Raised Quarter Deck Bulkhead ...	✓							
Bridge, After Bulkhead ...	✓							
Bridge, Forward Bulkhead ...	✓							
Forecastle Bulkhead ...								
Exposed Machinery Casings on Freeboard or Raised Quarter Decks ...								
Exposed Machinery Casings on Superstructure Decks ...	✓							
Machinery Casings within Superstructures not fitted with Class I Closing Appliances ...								
Deckhouses on Flush Deck Ships ...	✓							

PARTICULARS OF PROTECTION TO OPENINGS, ETC.

The following diagrams should be used to indicate the positions of cargo and coaling hatchways, gangway, cargo and coaling ports, ventilators, companionways, etc., which would affect the seaworthiness of the ship:—



Particulars of fiddley, funnel and ventilator coamings, engine room skylight and other openings in machinery casing tops and their means of closing:—

Fiddley, funnel & ventilator coamings efficient.
Engine room skylight of steel.
Fiddley gratings closed with strong steel hinged covers.

Particulars of Flush Bunker Scuttles:—

None

Particulars of Companionways:— Entrance to accommodation in poop from deckhouse fitted with hardwood doors 5' x 2' with 22" coaming.
Entrance to holds from mast house with steel doors & 21" coaming.
Entrance to gunners accommodation from after mast house having steel door & 21" coaming.

Particulars of Ventilators in exposed positions on freeboard and superstructure decks:—

Deck	Ventilator	Coaming
FCLE DK.	1-9" COWL VENT TO STORE	36 x 32.
	2-18" " " " HOLD	36 x 40
UPPER DK.	10-18" " " " " "	26 x 40
	2-15" " " " REFRIG MACHY.	36 x 36
	4-12" " " " TWIN DKS.	36 x 34.
	2-6" " " " BUNKER CLEADING.	36 x 30
	4-10" " " " HOLD	26 x 32.
	6-9" " " " GUNNERS.	36 x 32
	10-9" " " " ACC. AFT	36 x 32.
	2-12" " " " PASSAGES.	26 x 34.
	1-10" " " " TUNNEL TRUNK	26 x 32.

ALL VENTILATORS PROVIDED WITH WOOD PLUGS & CANVAS COVERS.

Particulars of Air Pipes in exposed positions on freeboard, raised quarter, or superstructure decks:—

Deck	Air Pipe	Height
FCLE DK	2-3" S.N. AIR PIPE TO FORE PEAK TANK	18" HIGH
	1-4" " " " " DOUBLE BOTTOM	18" "
UPPER DK	6-4" " " " " " "	30" "
	8-3" " " " " " "	30" "
	4-2 1/2" " " " " " "	30" "
	2-3 1/2" " " " " " "	30" "
	2-3" " " " " " " "	30" "
	2-4" " " " " " " "	30" "
	2-4" " " " " " " "	30" "

ALL AIR PIPES PROVIDED WITH WOOD PLUGS.

TRIONA

Particulars of Gangway Cargo and Coaling Ports:—

None

Particulars of Scuppers and Sanitary Discharge Pipes:— Sanitary discharges from upper deck led overboard & fitted with strong valves 6'-0" below upper deck.
Sanitary discharges from spaces below upper deck led overboard above second deck & fitted with two automatic non return valves both valves being accessible.
3" pipe scuppers fitted to upper deck & led overboard.
No sanitary nor scupper discharges led overboard below second deck.

Particulars of Side Scuttles:— Side scuttles in poop space 10" dia of substantial construction & fitted with hinged deadlights.

Vertical distance of Sill of lowest Side Scuttle above top of keel

Particulars of Guard Rails:— Upper deck 3 rails 3'-6" & stanchions 5'-0" apart. Substantial bulwark in way of main deck houses.

Side deck 2 rails stanchions 3'-6" high stanchions 5'-0" apart.

Particulars of Gangways, Lifelines, etc:—

Lifelines fitted all fore aft on both sides of vessel.

Particulars of Freeing Arrangements.

	Length of Bulwark	Height of Bulwark	Size of Freeing Ports	Number each side	Area each side	Rule area each side
After Well						
Forward Well						

State position of each freeing port ... After Well:—

(F. and A. position and height above deck edge) Forward Well:—

State whether the freeing ports are fitted with shutters, bars, or rails, and give particulars of such:—

Additional area where sheer is less than standard.

PARTICULARS OF PROTECTION TO OPENINGS, ETC.

HATCHWAYS ON FREEBOARD AND SUPERSTRUCTURE DECKS.									
Description of Hatchway		No 1	No 2	No 3	No 4 & 5				
Dimensions of Hatchway		31'-6" x 26'	33'-7" x 26'	15'-6" x 20'	31' x 26'	SMALL HATCHES			
COAMINGS	Height above Deck	30"	30"	30"	30"	ON FCL 2'-9" x 2'-9" FITTED WITH 9" COAMING.			
	Thickness	50	50	50	50	W.T. COVER WITH Toggles.			
	Stiffeners	2 1/2" B.A. 12 x 3 1/2 x 50	12 x 3 1/2 x 60	12 x 3 1/2 x 50 B.A.	12 x 3 1/2 x 50	UNDER FCL 3' x 3' 9" B.A. COAMING. CLEATS &			
	Brackets, Stays	2 1/2" B.A. SIDES EACH END 3	4	2	2	ONE TARPULIN.			
HATCH BEAMS	Number	5	5	2	5	COAL SHOOT ON BOARD 18' x 5'-3" 9" COAMING.			
	Spacing	5'-3"	5'-7 1/2"	5'-2"	5'-2"	2 1/2" COVERS, CLEATS 24" APART. (2 Tarpaulins)			
	Scantling and Sketch	2 1/2" x 38	20 1/2" x 38	17 3/4" x 35	19" x 35	ESCAPE HATCHES 2 IN FOREMAST HOUSE 2' x 2'			
	Bearing Surface	6 x 3 x 50 DBLE	5 x 3 x 38 DBLE	6 x 3 x 50 DBLE	6 x 3 x 50 DBLE	1 IN AFT " 9" COAMING. CLEATS & ONE TARPULIN.			
FORE AND AFTERS	Number	HATCH SIDE TRUS				HATCH TO MAGAZINE 2' x 2' WITH W.T. COVER.			
	Spacing	10 x 3 1/2 x 44 B.A.				SECURED BY Toggles 9" COAMING.			
	Unsupported Lengths	N°2 HATCH 12 x 3 1/2 x 60							
	Scantling* and Sketch	OTHERS 12 x 3 1/2 x 50							
HATCH COVERS	Material	W.P.	W.P.	W.P.	W.P.				
	Thickness	2 1/2	2 1/2	2 1/2	2 1/2				
	How fitted	F + A	F + A	F + A	F + A				
	Bearing Surface	3	3	3	3				
Spacing of Cleats		24	24	24	24				
Number of Tarpaulins		2	2	2	2				
<p>*Are wood fore and afters steel shod at all bearing surfaces? <input checked="" type="checkbox"/> YES</p> <p>Are battens and wedges efficient and in good condition? <input checked="" type="checkbox"/> YES</p> <p>Are tarpaulins in good condition and in accordance with rule requirements? <input checked="" type="checkbox"/> YES</p> <p>Are lashings provided in accordance with rule requirements? <input checked="" type="checkbox"/> YES.</p>									

Particulars of any special features:— The scantlings are suitable for a draught 18" in excess of that corresponding to the freeboard which could be assigned to the vessel with a tonnage opening.

The openings in the tween deck bulkheads are closed as required by the London Letter dated August 28th 1942.

Endorsement for deeper loading is required.

Endorsement at first survey and at surveys for renewal of Certificate:—

The fittings and appliances are in accordance with the particulars shown on this form (or as now modified) and are in good condition.



© 2021

Lloyd's Register Foundation