

Lloyd's Register of Shipping.

SURVEYS FOR FREEBOARD. (CONDITIONS OF ASSIGNMENT.)

Ship's Name **TROCHURUS. EX COUNCIL CREST.**

Port of Survey **Cardiff.**

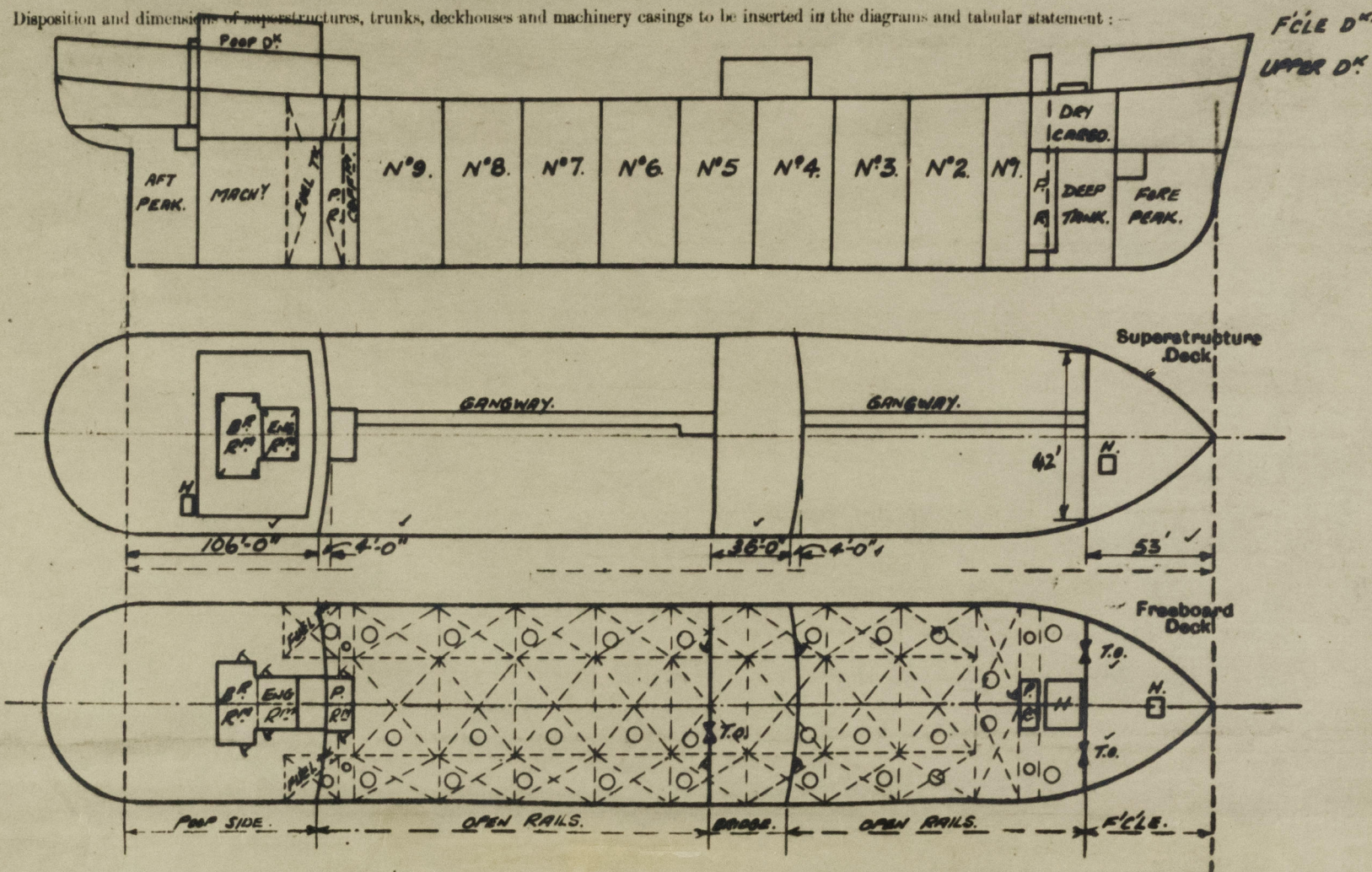
Official Number **181823.**

Surveyor's Signature **James Salter an**

Nationality and Port of Registry **British London**

Date of Survey **18. 12. 47. & subsequently.**

Disposition and dimensions of superstructures, trunks, deckhouses and machinery casings to be inserted in the diagrams and tabular statement:—



Particulars of Superstructures, Trunks, Casings, Deckhouses.

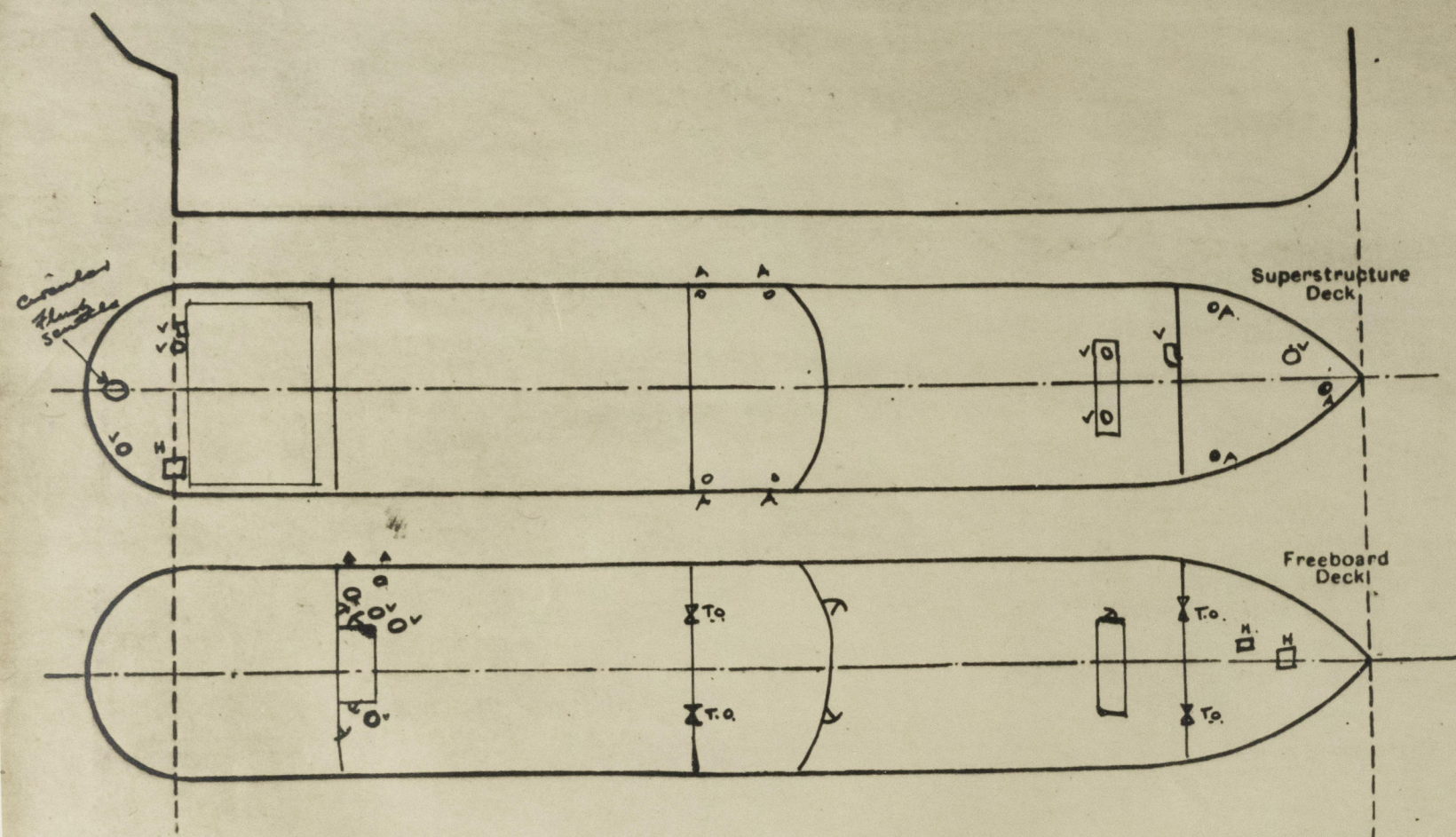
	Coaming	Plating	Stiffeners	Spacing	End Attachments of Stiffeners	Size of Openings	Height of Sills	Height of Casings
Poop Bulkhead	.44	.44	9"x4" flanged plate	30"	welded top & bottom	21'5"-0" x 2'4"	18"	8'-0"
Bridge, After Bulkhead	.30	.30	4"x3" angle riv.	30"	welded top & bottom	2'4"-1" x 3'-1"	24"	8'-0"
Bridge, Forward Bulkhead	.44	.44	9"x4" flanged plate	30"	ditto.			
Forecastle Bulkhead	.38	.38	4"x3" riv angle	30"	8"x4" riv top, welded 8"x4" bottom	2'4"-9" x 3'-1"	24"	10'-0"
Trunk, Aft	None							
Trunk, Forward	.38	.38	9"x4" flanged plate	28"	welded top & bottom	22'5"-0" x 2'4"	18"	8'-0"
Exposed Machinery Casings on Freeboard or Superstructure Decks	PR. .38	.38	6"x3" riv. a. Fore & aft	27"	welded top only	12'5"-0" x 2'4"	18"	8'-0"
Exposed Machinery Casings on Superstructure Decks								
Machinery Casings within Superstructures not fitted with Class I Closing Appliances	None							
Deckhouses on Flush Deck Ships	None							

Particulars of Closing Appliances (state if capable of being manipulated from both sides).

Poop Bulkhead	Hinged steel W.T. Door (P.&S.) capable of being manipulated from both sides.
Bridge, After Bulkhead	Hinged steel W.T. doors capable of being manipulated from both sides. Portable steel plates secured by hook bolts.
Bridge, Forward Bulkhead	Hinged steel W.T. doors capable of being manipulated from both sides.
Forecastle Bulkhead	Hinged steel W.T. doors capable of being manipulated from both sides.
Exposed Machinery Casings on Freeboard or Superstructure Decks	Portable steel plates secured by hook bolts.
Exposed Machinery Casings on Superstructure Decks	Pump Rooms - Hinged steel W.T. doors capable of being manipulated from both sides.
Machinery Casings within Superstructures not fitted with Class I Closing Appliances	No openings.
Deckhouses on Flush Deck Ships	No openings.

PARTICULARS OF PROTECTION TO OPENINGS, ETC.

The following diagrams should be used to indicate the positions of cargo and coaling hatchways, gangway, cargo and coaling ports, ventilators, companionways, etc., which would affect the seaworthiness of the ship:—



Particulars of hddley, funnel and ventilator coamings, engine room skylight and other openings in machinery casing tops and their means of closing:—
Fiddley openings fitted with gratings and hinged steel flaps. ✓

E.R. & E.R. ventilator and funnel coamings strongly constructed of steel. ✓

E.R. & Pump Room skylights strongly constructed of steel. ✓

Particulars of Flush Bunker Scuttles:—

Circular flush scuttles on Poop Deck to Beam store. Steel cover, bayonet type joint. Cover secured to deck underside by steel chain. ✓

Particulars of Companionways:— Pump Rooms - Hinged steel W.T. doors, manipulated from both sides, openings sill
Poop Deckhouse - plating steel, openings in sides and ends 5'-0" x 2'-4", sills 15" with hinged steel W.T. doors manipulated from both sides.

Particulars of Ventilators in exposed positions on freeboard and superstructure decks:—

Forecastle Deck:— 2 - 12" diam. 36" high

Upper Deck:— 3 - 24" diam. aft well
2 - 12" diam. top of Pump Room forward } 36" high

Bridge Deck:— 4 - 12" diam.

Poop Deck:— one 12" x 18" } mechanical ventilation 24" high
one 18" diam. }
one 12" diam. vent. air pipe. " 4

Efficient closing appliances provided for all ventilator coamings.

Coamings exceeding 36" in height suitably supported. ✓

Particulars of Air Pipes in exposed positions on freeboard, raised quarter, or superstructure decks:—

Forecastle Deck:— one 4" diam. 30" high ✓
2 - 2" diam. - 30" high ✓

Upper Deck:— 2 - 4" diam. fore well 36" high ✓
2 - 6" diam. to hold. 36" high ✓

Poop Deck:— one 12" diam. - air pipe 36" high. ✓

Efficient closing appliances provided for all air escape pipes. ✓

Particulars of Gangway Cargo and Coaling Ports:—

None.

TROCHURUS.

Particulars of Scuppers and Sanitary Discharge Pipes:—

Scuppers and sanitary discharges from Poop accommodation led overboard below the freeboard deck and fitted with substantially constructed storm valves at ship's side. ✓

Scuppers and sanitary discharges from Midship accommodation led overboard above the freeboard deck and fitted with substantially constructed storm valves at ship's sides. ✓

Particulars of Side Scuttles:—

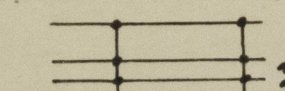
Poop Tween Decks:— side scuttles of strong construction fitted with hinged deadlights permanently attached. ✓

Vertical distance of Sill of lowest Side Scuttle above top of keel

Particulars of Guard Rails:—

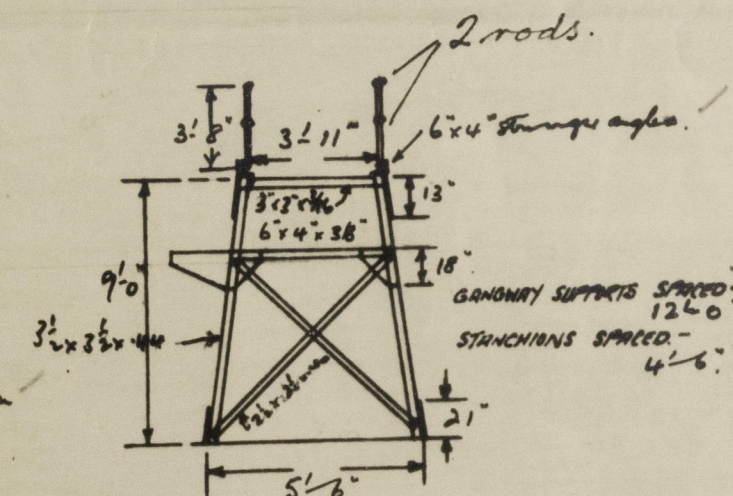
At sides of Upper, Forecastle & Poop Decks

Stanchions 3'-6" in height spaced 5'-0" apart and fitted with 3 rails



Particulars of Gangways, Lifelines, etc.:—

Fore and aft gangway fitted between the forecastle and bridge deck and bridge and poop deck. welded construction with chequered steel walkway. ✓



Particulars of Freeing Arrangements.

	Length of Bulwark	Height of Bulwark	Size of Freeing Ports	Number each side	Area each side	Rule area each side
After Well ...	Guard rails.					
Forward Well ...	- do -					

State position of each freeing port ... After Well:—

(F. and A. position and height above deck edge) Forward Well:—

State whether the freeing ports are fitted with shutters, bars, or rails, and give particulars of such:—

Additional area where sheer is less than standard.

PARTICULARS OF PROTECTION TO OPENINGS, ETC.

HATCHWAYS ON FREEBOARD AND SUPERSTRUCTURE DECK										OTHER SMALL HATCHES	
FREEBOARD DECK										DECK	
Description of Hatchway	TO F.C. STORE	TO F.C. CARGO HOLD	TO OIL TANKS	TO FORE & AFT.	TO DEEP TANK FORWARD	TO DEEP TANK AFT.	TO C.F. BUNKERS	TO C.F. STEVEDORE	TO F.C. STORE	TO F.C. CARGO HOLD	TO F.C. CARGO HOLD
Dimensions of Hatchway	3'1" x 3'1"	11'3" x 4'9"	48" diam	24" diam	24" diam	24" diam	24" diam	4'0" x 4'0"	3'0" x 3'0"	3'0" x 3'0"	3'0" x 3'0"
COAMINGS	Height above Deck ... 30"	30"	30"	30"	30"	30"	30"	30"	30"	30"	30"
	Thickness60	.60	.60	.60	.60	.60	.60	.60	.60	.60	.60
	Sides ... 3"	3"	3"	3"	3"	3"	3"	3"	3"	3"	3"
	Stiffeners ... 3"	3"	3"	3"	3"	3"	3"	3"	3"	3"	3"
	Brackets, Stays ... 3"	3"	3"	3"	3"	3"	3"	3"	3"	3"	3"
HATCH BEAMS	Number ...	Steel	Steel	Steel	Steel	Steel	Steel	Steel	Steel	Steel	Steel
	Spacing ...	6" x 3 1/2" riv	6" x 3 1/2" riv	6" x 3 1/2" riv	6" x 3 1/2" riv	6" x 3 1/2" riv	6" x 3 1/2" riv	6" x 3 1/2" riv	6" x 3 1/2" riv	6" x 3 1/2" riv	6" x 3 1/2" riv
	Scantling and Sketch ...	NONE	NONE	NONE	NONE	NONE	NONE	NONE	NONE	NONE	NONE
	Bearing Surface ...	Steel	Steel	Steel	Steel	Steel	Steel	Steel	Steel	Steel	Steel
FORE AND AFTERS	Number ...	NONE	NONE	NONE	NONE	NONE	NONE	NONE	NONE	NONE	NONE
	Spacing ...	NONE	NONE	NONE	NONE	NONE	NONE	NONE	NONE	NONE	NONE
	Unsupported Lengths ...	NONE	NONE	NONE	NONE	NONE	NONE	NONE	NONE	NONE	NONE
	Scantling and Sketch ...	NONE	NONE	NONE	NONE	NONE	NONE	NONE	NONE	NONE	NONE
	Bearing Surface ...	Steel	Steel	Steel	Steel	Steel	Steel	Steel	Steel	Steel	Steel
HATCH COVERS	Material ...	STEEL	STEEL	STEEL	STEEL	STEEL	STEEL	STEEL	STEEL	STEEL	STEEL
	Thickness50	.50	.50	.50	.50	.50	.50	.50	.50	.50
	How fitted ...	Toggles	Toggles	Toggles	Toggles	Toggles	Toggles	Toggles	Toggles	Toggles	Toggles
	Bearing Surface ...	Steel	Steel	Steel	Steel	Steel	Steel	Steel	Steel	Steel	Steel
Spacing of Cleats	...	-	-	-	-	-	-	-	-	-	-
Number of Tarpaulins	...	-	-	-	-	-	-	-	-	-	-

*Are wood fore and afters steel shod at all bearing surfaces? -

Are battens and wedges efficient and in good condition? -

Are tarpaulins in good condition and in accordance with rule requirements? -

Are lashings provided in accordance with rule requirements? -

Particulars of any special features:—

All cargo oil tank hatch covers fitted with ullage coors 10" diameter of strong construction secured by strongbacks. ✓

Endorsement at first survey and at surveys for renewal of Certificate:—

The fittings and appliances are in accordance with the particulars shown on this form (or as now modified) and are in good condition.

MLD



© 2020

Lloyd's Register Foundation