

S.S. THE PRESIDENT & THE EARL

MIDSHIP SECTION

SCALE 1/2"=1 FOOT
 DIMS. MLD. 199'6" x 32'0" x 14'6" TO UPPER DK
 18'6" TO R.Q. DK

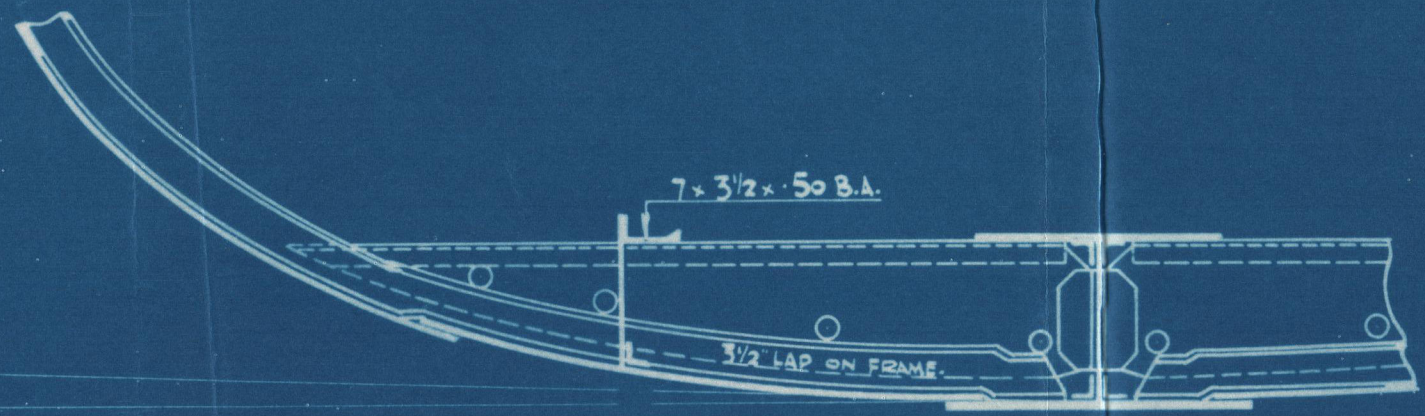
TO LLOYDS CLASS 100 A.1.

LLOYDS NUMERALS	
L	199.5
B	32.0
D	14.5
d to UPPER DECK	12.0
d to QUARTER DECK HOLD	10.0
d to BOILER SPACE	17.53
d to ENGINE SPACE	13.5 APPROX.
1/10 to UPPER DECK	13.78
1/10 to QUARTER DECK	10.79
L x D	2892.75
L x (B + D)	9276.75

EQUIPMENT NUMERAL	
2ND LONGITUDINAL NUMBER	9276.75
QUARTER DECK 110 x 4	464.00
FORECASTLE DECK 36.5 x 7.25 x 7.5	168.84
BRIDGE DECK 12.0 x 7.5 x 7.5	67.50
CASINGS 58.5 x 7.25 x 30	210.00
EQUIPMENT NUMBER	10184.09

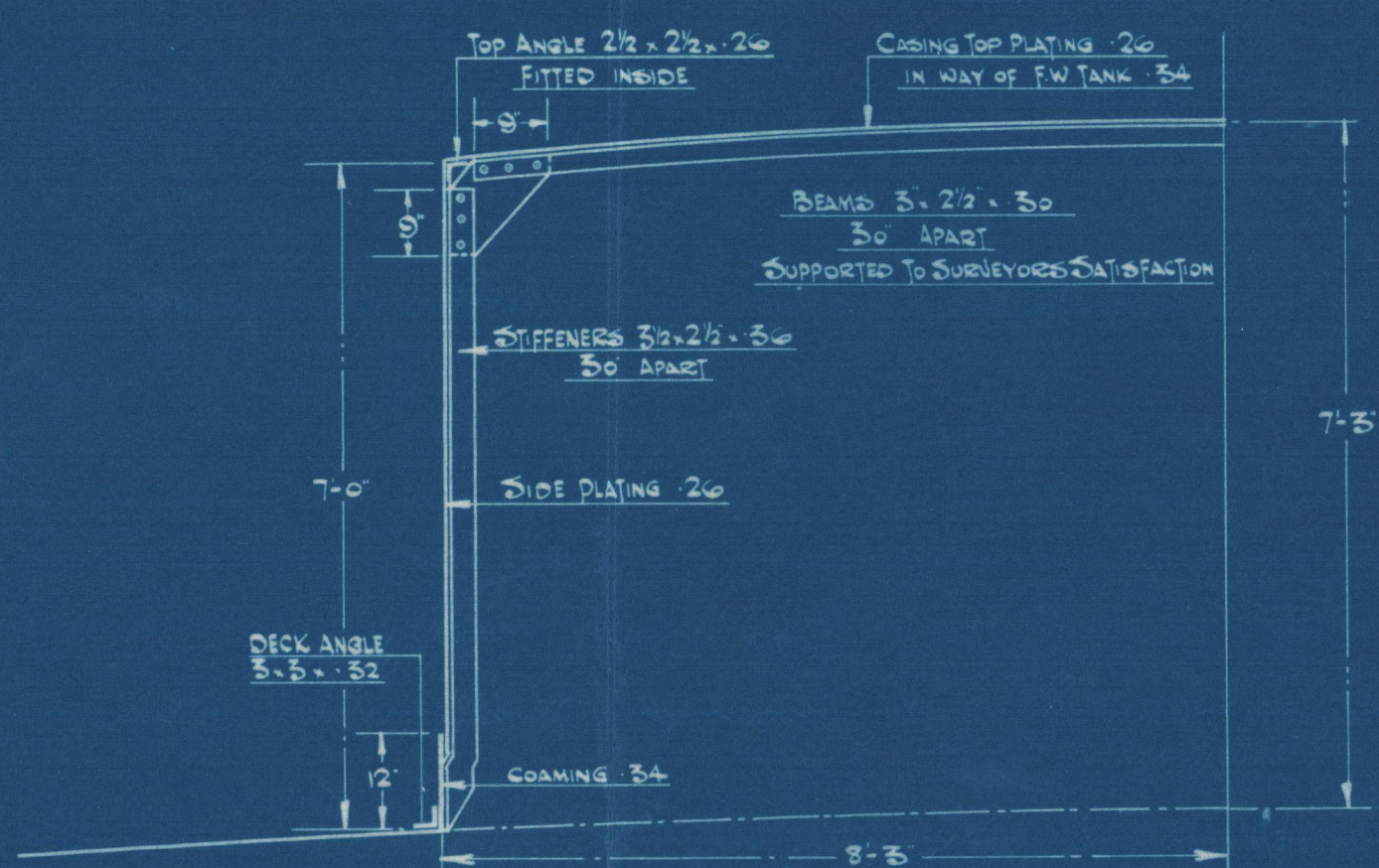
EQUIPMENT LETTER &	
2 BOWER ANCHORS STOCKLESS EACH 2 1/4 CWT.	
1 ANCHOR	18
1 STREAM (EX STOCK)	5 1/2
210 FATHOMS 9/16 STUD CHAIN CABLE	
90 " 3/4 STEEL STREAM WIRE 9/16	
90 " 3" WIRE TOWLINE 9/16	
1 OFF 90 FATHOMS 6 MANILLA HAWSEER	
1 OFF 90 " 5" WARP	

	BOILER SPACE	ENGINE SPACE
FRAMES	SEE SIDE FRAMING	SEE SIDE FRAMING
REV. FRAMES	3 x 3 x 42	3 1/2 x 3 x 30 3/4
FLOORS	20 1/2 x 44	36
CEILING PLATE	50	45
FOUNDATION PLATE	32 x 50	50
TOP ANGLES	3 x 3 x 42	3 x 3 x 42
BOTTOM ANGLES	3 1/2 x 3 1/2 x 44	3 1/2 x 3 1/2 x 44
VERT. ANGLES	5 x 5 x 50	5 x 5 x 45
SIDE INTERCOSTAL PLATE	42	36
BOTTOM ANGLES	3 x 3 x 32	3 x 3 x 32
VERT. ANGLES	NONE	5 x 5 x 38

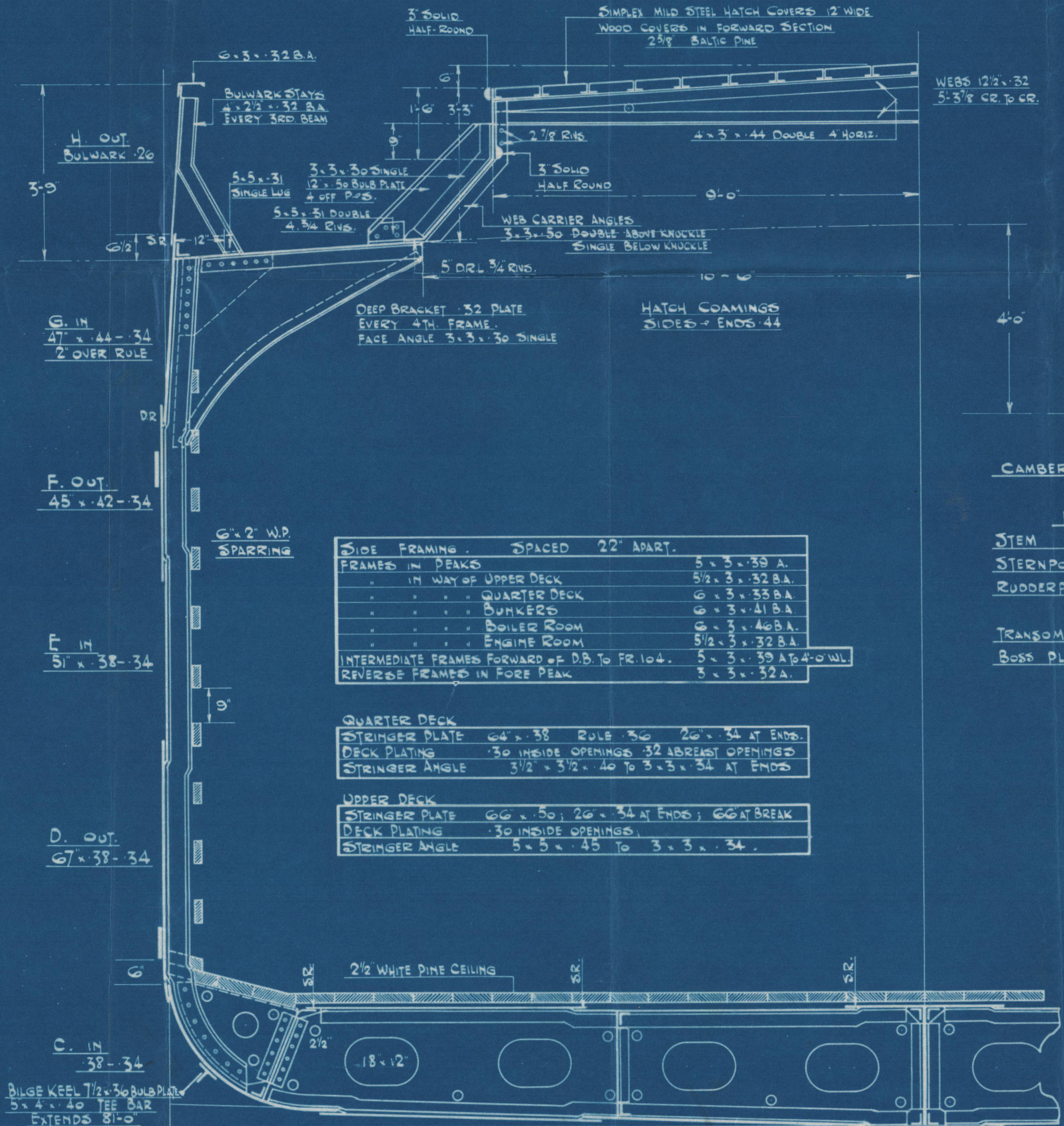


SECTION THRO' OPEN FLOORS
 IN BOILER ROOM.

NOTE - NO RIVET LESS THAN 3/4" DIA. WITH 3" FLANGES
 EXCEPT IN CASINGS AND HOUSES.



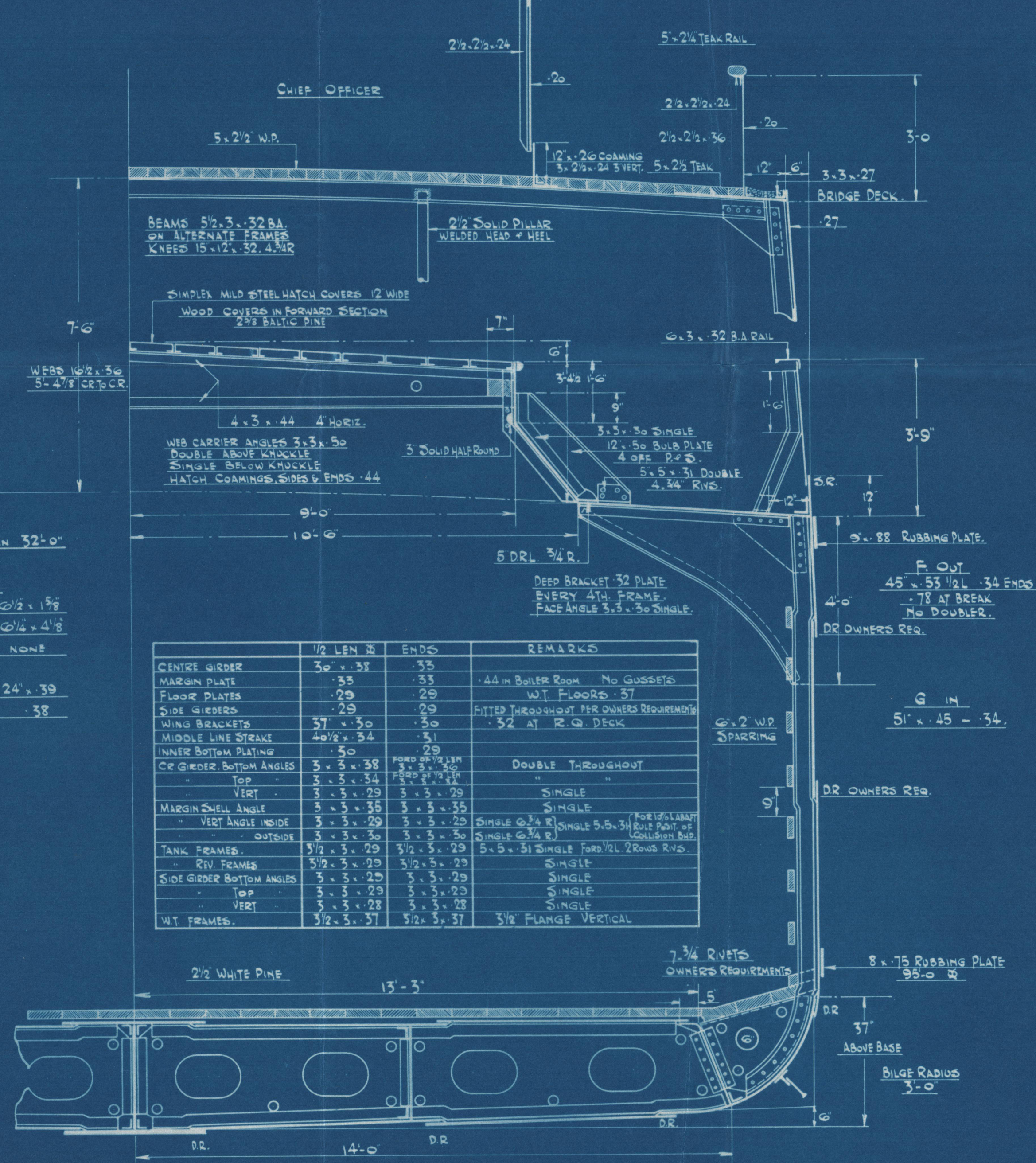
ENGINE & BOILER CASING.



SECTION THRO' HOLD IN WAY OF QUARTER DECK.

	BRIDGE DECK	FORECASTLE DECK
HEIGHT FROM TO BEAM	7'-0"	7'-3"
ROUND OF BEAM	8"	8"
BEAMS ON ALTERNATE FRAMES	5 1/2 x 3 x 32 B.A.	6 x 3 x 32 B.A. TO 6 x 3 x 30 A
BEAM KNEES	15 x 12 x 32 4 1/4 R	18 x 12 x 32 4 1/4 R
SIDE PLATING	27	27
STRINGER PLATE	32 x 27	18 x 27
ANGLE	3 x 3 x 27	3 x 3 x 27
QUITTER ANGLE	2 1/2 x 2 1/2 x 30	2 1/2 x 2 1/2 x 30
TIE PLATES	7 x 27	7 x 27
WOOD DECK EXPOSED	5 x 2 1/2 TEAK	5 x 2 1/2 TEAK
INSIDE ACCOM.	5 x 2 1/2 W.P.	

	1/2 LENGTH	ENDS
BUTT RIVETING	TREBLE STRAPS	TREBLE STRAPS
WELD	"	"
SHEER STRAKE UPPER DECK	"	"
QUARTER DECK	"	"
STRAKE BELOW QUARTER DECK	"	"
BOTTOM PLATING	"	"
SIDE PLATING	"	"
UPPER DECK STRINGER PLATE	"	"
QUARTER DECK	"	"
BRIDGE & FORE DECK	"	"
TANK MARGIN	"	"
MIDDLE LINE STRAKE	"	"
TANK TOP PLATING	"	"
FORECASTLE SIDE PLATING	"	"
EDGE RIVETING	"	"
SHELL PLATING	"	"
DECK	"	"
TANK TOP	"	"



SECTION THRO' HOLD IN WAY OF UPPER DECK.

AILSA SBC

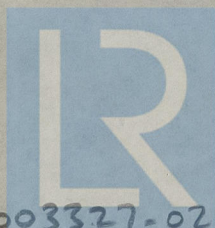
Nº 421

MIDSHIP SECTION

*as built
Nº 421
10/5/36*

"THE PRESIDENT."

GLASGOW REPORT No. 56986



© 2020

Lloyd's Register
Foundation

003321-003327-0205