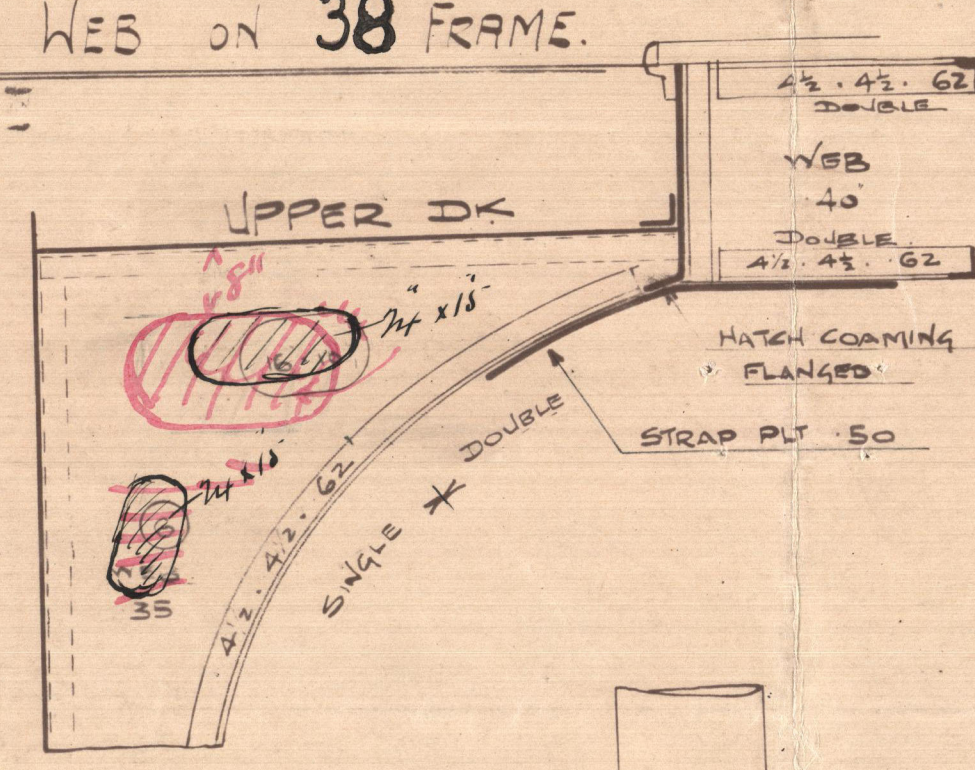


24.7.13
5.8.13
8.10.13
18.10.13
5.11.13
19.3.14
20.08.14

SKETCH OF WEB ON 38 FRAME.

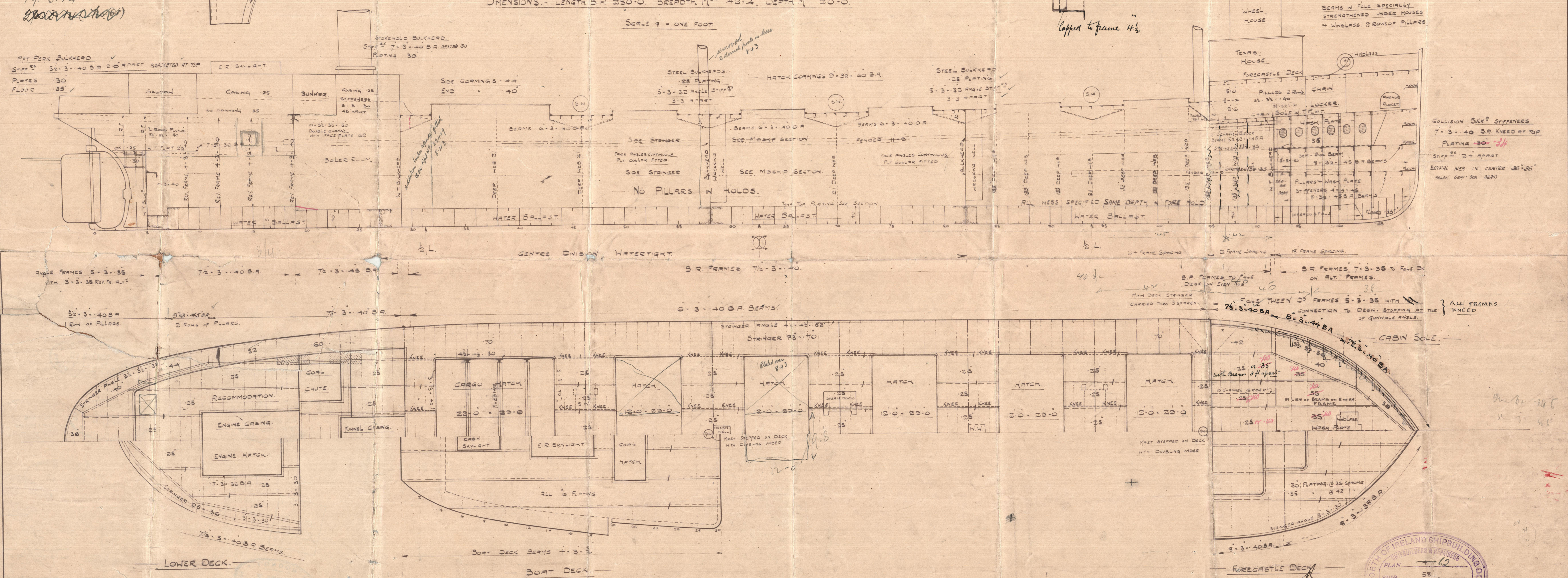


PROFILE & DECK PLANS. N° 58 ^{S.}

TO LLOYD'S HIGHEST CLASS FOR SERVICE ON THE GREAT LAKES AND THE
ST LAWRENCE RIVER, WITH FREEBOARD.

DIMENSIONS:- LENGTH B.P. 250'-0". BREADTH M^D 42'-4". DEPTH M^D 20'-0".

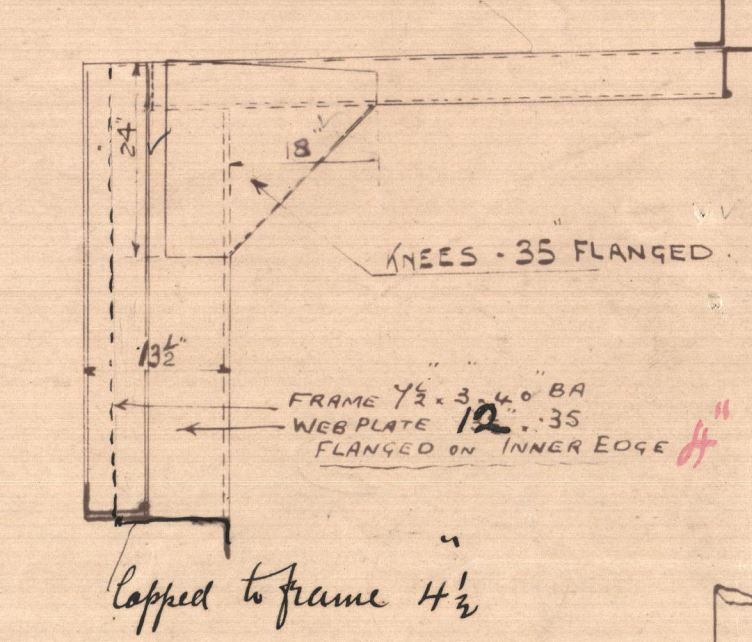
SCALE 1" = ONE FOOT.



WEB CONNECTION TO BEAM ON FRAMES

95, 98, 91, 94, 97, 100, 103, 105, 108

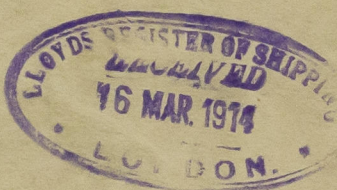
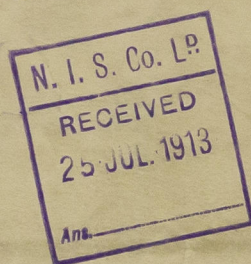
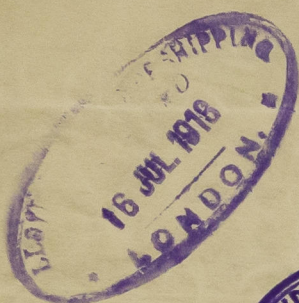
NOTE: 21" WEB TO NO 94



BEAMS IN FILE SPECIALLY
STRENGTHENED UNDER ROUSES
+ WINDLASS 2 ROWS OF PILLARS

COLLISION BULK STIFFENERS
7'-3'-40 B.R. KNEED AT TOP
PLATING 30" 34
STIFF 25" 24" APART
BOTH IN CENTRE 36" 36"
BEAM 50" 30" BEAM





© 2020

Lloyd's Register
Foundation

S.S. Keynor

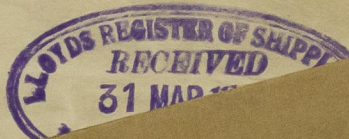
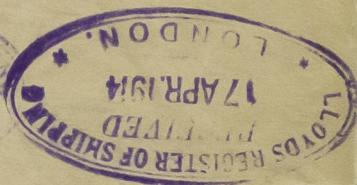
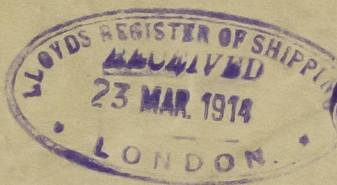
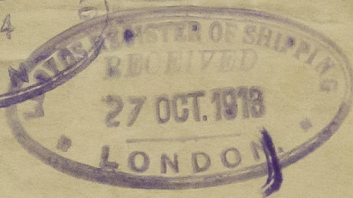
North of Ireland S.B. & Co. Ltd.

No 58

Amended Profile and

Deck Plan.

S/S "Keynor" Bel 7599.



© 2020

Lloyd's Register
Foundation

003321-003327-0147