

# Lloyd's Register of Shipping.

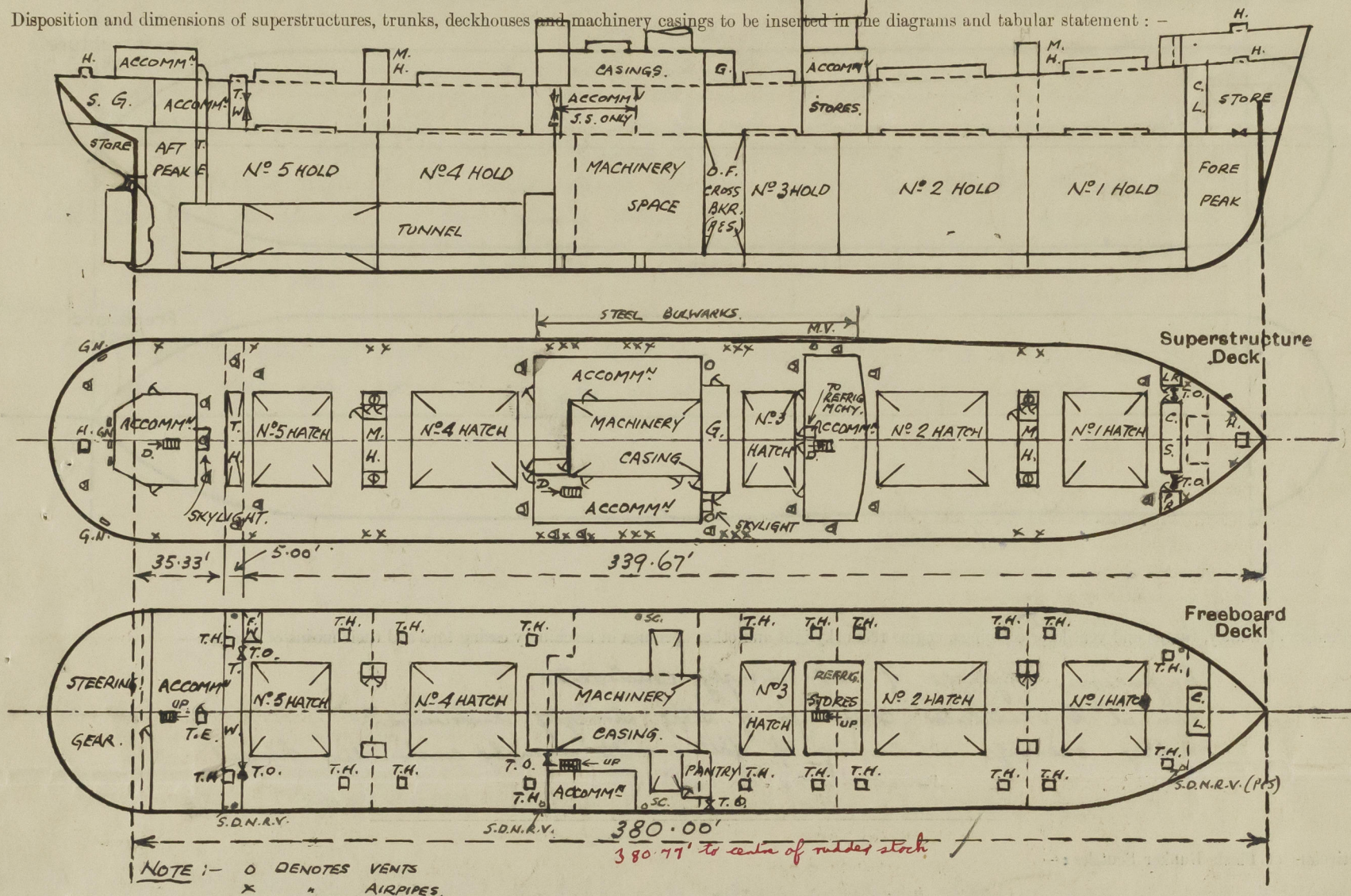
## SURVEYS FOR FREEBOARD.

### (CONDITIONS OF ASSIGNMENT.)

N<sup>o</sup> 34663

Ship's Name "SUSSEX TRADER" Port of Survey Sunderland.  
JANANI  
 Official Number 181621 Surveyor's Signature D. Forsyth  
 Nationality and Port of Registry British, London Date of Survey During Construction.  
Bombay

Disposition and dimensions of superstructures, trunks, deckhouses and machinery casings to be inserted in the diagrams and tabular statement: -



Particulars of Superstructures, Trunks, Casings, Deckhouses.

	Coaming	Plating	Stiffeners	Spacing	End Attachments of Stiffeners	Size of Openings	Height of Sills	Height of Casings
Poop Bulkhead (TONNAGE WELL) ...	.26"	.26"	5'x3"x.30" O.A.	33"	Riveted to boundary angles	✓	✓	8'-0"
Raised Quarter Deck Bulkhead ...	✓							
Bridge, After Bulkhead (TONNAGE WELL) ...	.26"x.30"	.26"x.30"	5'x3"x.30" O.A.	29'-30"	Riveted to boundary angles	5'-0"x3'-1"	20"	8'-0"
Bridge, Forward Bulkhead ...	✓							
Forecastle Bulkhead (ON C.S.S.) ...	.26"	.26"	4'x3"x.34" O.A.	30"	Riveted to boundary angles	2 @ 4'-7"x3'-1" 3 @ 4'-6"x1'-10"	18" 19"	7'-0"
Trunk, Aft ...	✓							
Trunk, Forward ...	✓							
Exposed Machinery Casings on Freeboard or Raised Quarter Decks ...	✓							
Exposed Machinery Casings on Superstructure Decks ...	✓							
Machinery Casings within Superstructures not fitted with Class I Closing Appliances ...	.34"	.26"x.30"	3"x3"x.30"	30"	Continuous top and free at bottom	✓	✓	9'-1"
Deckhouses on Flush Deck Ships ...	✓							

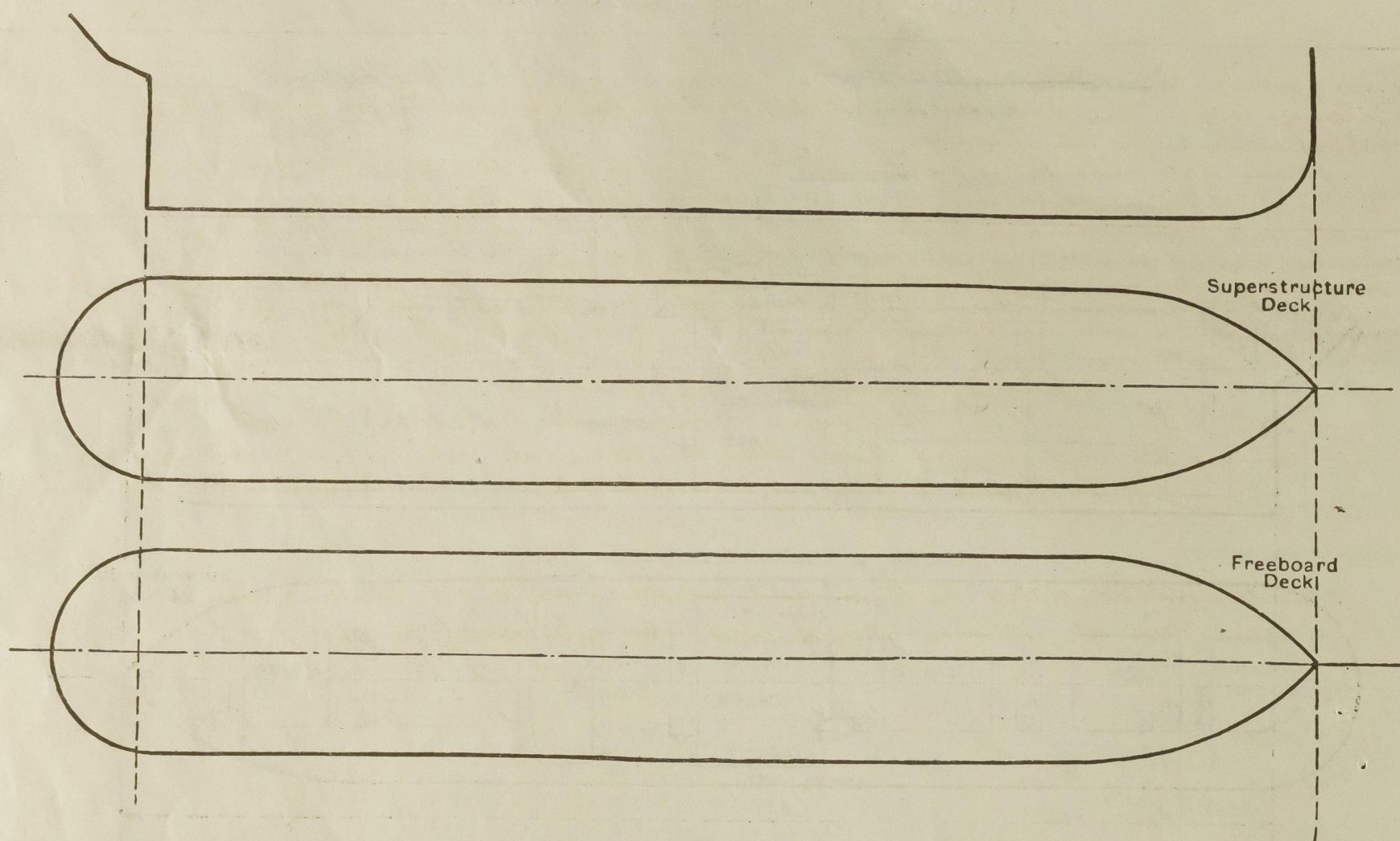
Particulars of Closing Appliances (state if capable of being manipulated from both sides).

Poop Bulkhead (TONNAGE WELL) ...	✓ No openings
Raised Quarter Deck Bulkhead ...	✓
Bridge, After Bulkhead (TONNAGE WELL) ...	3" Shifting boards in full height channels.
Bridge, Forward Bulkhead ...	✓
Forecastle Bulkhead ... (ON C.S.S.)	3" Shifting boards in full height channels, and hinged steel W.T. doors, operated both sides.
Exposed Machinery Casings on Freeboard or Raised Quarter Decks ...	✓
Exposed Machinery Casings on Superstructure Decks ...	✓
Machinery Casings within Superstructures not fitted with Class I Closing Appliances ...	✓
Deckhouses on Flush Deck Ships ...	✓



# PARTICULARS OF PROTECTION TO OPENINGS, ETC.

The following diagrams should be used to indicate the positions of cargo and coaling hatchways, gangway, cargo and coaling ports, ventilators, companionways, etc., which would affect the seaworthiness of the ship:—



Particulars of fiddle, funnel and ventilator coamings, engine room skylight and other openings in machinery casing tops and their means of closing:—

Engine room skylight of steel strongly constructed.  
Funnel & Ventilator coamings of steel strongly constructed.  
Fiddle openings in casing top fitted with strongly constructed hinged steel storm covers.

Particulars of Flush Bunker Scuttles:—

None

Particulars of Companionways:— Access & Vent trunks to hold spaces in masthouses - Openings 5'-0" x 2'-0", coaming 18", with hinged steel W.T. doors (6 boggles) operated both sides. In tween decks openings 4'-6" x 1'-10", coamings 24" with hinged steel doors operated both sides.  
In midship houses - openings 5'-0" x 2'-0", coamings 20" with hinged solid hardwood doors, enclosing companionways to stores, crew's accommodation (S.S.) & engine room casings; also opening to E.R. casing 5'-0" x 2'-9", coaming 18" and to refug. machy. 5'-0" x 2'-0", coaming 19" with hinged steel W.T. doors operated both sides. In after deckhouse, openings 5'-0" x 2'-0", coaming 20", with hinged solid hardwood doors, enclosing companionway to crew's accommodation & to tunnel escape.

Particulars of Ventilators in exposed positions on freeboard and superstructure decks:—

1 @ 8" dia, coaming 3'-0" x 32" to F.P. Stores } On  
2 @ 8" " " 3'-0" x 36" " F.P. Stores } Fore  
2 @ 6" " " 3'-0" x 34" " " " } Aft  
2 @ 21" " " 9'-0" x 42" " N°1 Hold space (efficiently stayed) } On  
6 @ 25" " " 9'-9" x 42" " N°2, 3 & 4 " " " } Upper  
2 @ 6" " " 2'-6" x 36" " Stores } Deck  
1 @ 9" " (M.V.) " 3'-6" x 34" " Refug. machy space } On  
2 @ 26" " (derrick post vents) to Tween decks } Mast  
1 @ 6" " coaming 2'-6" x 32" to crew's pantry (S.S.) } House  
1 @ 10" " " 2'-6" x 34" " " accom. (S.S.) } Top  
1 @ 8" " " 2'-6" x 32" " " (S.S.) }  
2 @ 18" " " 3'-0" x 42" " Tween decks }  
2 @ 18" " " 3'-0" x 42" " N°5 Hold. }  
Ventilators fitted with wood plugs & canvas covers.

Particulars of Air Pipes in exposed positions on freeboard, raised quarter, or superstructure decks:—

To peaks, D.B. feed & water ballast tanks & Cofferdams, 3" dia, openings 18" above deck.  
To deck oil fuel tanks, and D.B. oil fuel or water ballast tanks, 5", 4" & 3" dia, openings 18" above deck.

Air pipes fitted with wood plug or gauze and canvas covers.

Particulars of Gangway Cargo and Coaling Ports:—

None

"JANANI"  
Sutroo Trader.

Particulars of Scuppers and Sanitary Discharge Pipes:—

In tonnage well 1-5" dia, S.D.N.R. valve scupper (P.E.S.), discharging overboard, operated from accessible position on upper deck & fitted with indicator.  
In way machy. space amidships 1-3" dia. scupper pipe (P.E.S.) led to E.R. bilge & fitted with weighted lever cocks at lower end.  
At forward end of tween dk. (No deep) 1-3" dia S.D.N.R. valve scupper (P.E.S.) led to hold bilge, and in N° 4 tween dk (S.S.) abaft crew's accommodation a similar 3" dia. S.D.N.R. valve scupper led to hold bilge; these valves operated from accessible position on upper dk. & fitted with indicators.  
Refug. machy. & store room scuppers on 2<sup>nd</sup> dk. (enclosed spaces) discharge overboard just below 2<sup>nd</sup> dk. & fitted with brass automatic non-return storm valves at ship's side & inboard end fitted with secured plug, with chasing, pantry sink (Crew's) on 2<sup>nd</sup> dk. amidships discharging below 2<sup>nd</sup> dk. similarly fitted, but with positive plug cock at inner end.  
From steering gear & drying room aft 2" dia scupper pipe led into 1 common 2 1/2" dia scupper pipe led to tunnel, & fitted with weighted lever cock at lower end.  
7 - 3 1/2" dia scupper pipes (P.E.S.) discharging overboard above level of the 2<sup>nd</sup> deck.  
All sanitary discharges are from spaces above the upper deck & discharging overboard above the level of the 2<sup>nd</sup> deck & fitted with brass automatic non-return storm valves at ship's side.  
1-2" dia. scupper pipe draining 2<sup>nd</sup> deck in crew's accommodation spaces aft (P.E.S.), discharging overboard immediately below the second deck and fitted with automatic non return storm valve at ship's side and secured plug secured by chains at inner end.

Particulars of Side Scuttles:—

To accommodation spaces in tween decks amidships (S.S.), and to accommodation spaces in tween decks aft, 12" dia, strongly constructed with hinged deadlights

Vertical distance of Sill of lowest Side Scuttle above top of keel

30'-10"

Side scuttles fitted in tween decks amidships (S.S.) and aft (P.E.S.).

Particulars of Guard Rails:—

Strongly constructed steel bulwarks, efficiently stayed, fitted on upper deck for about 110'-0" abreast midship house; elsewhere on upper deck & forecastle deck strong steel stanchions 3'-9" and 3'-6" high respectively, spaced about 5'-0" apart, with 3-rails, (portable gates in way of cargo hatchways).

Particulars of Gangways, Lifelines, etc.:—

## Particulars of Freeing Arrangements. (See also Scuppers)

	Length of Bulwark	Height of Bulwark	Size of Freeing Ports	Number each side	Area each side	Rule area each side
TONNAGE After Well ... ..	5'-0"	✓	5" dia, S.D.N.R. valves operated from Upper Deck	1	✓	✓
Forward Well ... ..	✓					

State position of each freeing port ... .. { After Well:— ✓

(F. and A. position and height above deck edge) { Forward Well:— ✓

State whether the freeing ports are fitted with shutters, bars, or rails, and give particulars of such:— ✓

Additional area where sheer is less than standard. ✓



# PARTICULARS OF PROTECTION TO OPENINGS, ETC.

		HATCHWAYS ON FREEBOARD AND SUPERSTRUCTURE DECKS.									
		FREEBOARD DECK					UPPER DECK				
Description of Hatchway		Nº1	Nº2	Nº3	Nº4	Nº5	Nº1	Nº2	Nº3	Nº4	Nº5
Dimensions of Hatchway		29'-2" x 19'-3"	35'-0" x 19'-3"	17'-6" x 19'-3"	35'-0" x 19'-3"	29'-2" x 19'-3"	29'-2" x 19'-3"	35'-0" x 19'-3"	17'-6" x 19'-3"	35'-0" x 19'-3"	29'-2" x 19'-3"
COAMINGS	Height above Deck ... Thickness { Sides ... { Ends ... Stiffeners ... Brackets, Stays ...	10" x 3 1/2" x 7/16" B.A.					30" x 3 1/2" x 7/16" ENDS 9" x 3 1/2" x 7/16" SIDES 7 x 3 x 40 L(A) 7 x 3 x 40 L(F) 3P. 3S. 3P. 3S. 1P. 1S. 1F. 1A. 1F. 1A.				
HATCH BEAMS	Number ... Spacing ... Scantling and Sketch ... WEB PLATES Bearing Surface ...	4 5'-10"	5 5'-10"	2 5'-10"	5 5'-10"	4 5'-10"	4 5'-10"	5 5'-10"	2 5'-10"	5 5'-10"	4 5'-10"
		27' x .42"	21' x .38"	19' x .38"	19' x .38"	18' x .38"	16 1/4' x .33"				
		TOP & BOTTOM ANGLES 4" x 3" x .44"					TOP & BOTTOM ANGLES 4" x 3" x .44"				
		(4" HORIZ)					(4" HORIZ)				
FORE AND AFTERS	Number ... Spacing ... Unsupported Lengths ... Scantling* and Sketch ... Bearing Surface ...	2 3/4" wood - (See Ch. 10) - 2 3/4" wood									
HATCH COVERS	Material ... Thickness ... How fitted ... Bearing Surface ...	1/8" PLATE, 3" DEPTH SIMPLEX STEEL (APPV)					1/8" PLATE, 3" DEPTH SIMPLEX STEEL (APPV)				
		3 1/2" AT HATCH ENDS, 4" ON BEAMS					3 1/2" AT HATCH ENDS, 4" ON BEAMS				
Spacing of Cleats		24"					24"				
Number of Tarpaulins		1					2				

\*Are wood fore and afters steel shod at all bearing surfaces? ☒  
 Are battens and wedges efficient and in good condition? ☒  
 Are tarpaulins in good condition and in accordance with rule requirements? ☒  
 Are lashings provided in accordance with rule requirements? ☒ (locking bar)

Particulars of any special features:— Steel Skylight:- Strongly constructed steel skylight on upper deck at forward end of after deck house to crew accommodation, coaming 14" high, & fitted with steel hinging W.T. covers.

Small Hatches:- Tonnage hatch- 4'-8" x 19'-3", Coaming 9" x 3 1/2" x .44", 2 1/2" W. wood covers, fitted F. & A., bearing surface 3", covers secured by ring bolts and lashings.

On Upper Deck { To Steering Gear:- 2'-3" x 2'-1", Coaming 9" x .44", with hinged steel W.T. cover .30" thick, secured by 4 toggles  
To Fore's Stores in Fore's Tween- 3'-9" x 3'-0", coaming 9" x 3 1/2" x .44", 2 1/2" W. wood covers (2 hinges, fitted F. & A., bearing surface 2 1/2", & complete with battens, cleats & 1 tarpaulin.

On Fore's Dk. { To Fore's Spaces:- 3'-9" x 3'-1", Coaming 24" x .44", with hinged steel W.T. cover .40" thick, secured by 10 toggles

On 2nd (Hd) Dk. { Trimming hatches 20 off 2'-0" x 2'-0", Coaming 9" x .40" welded to deck, with .35" thick steel hinging covers secured by 4 toggles with jointing.

Steel Skylight:- Strongly constructed steel skylight on upper deck at starboard side of galley to crew pantry, coaming 18" high, & fitted with steel hinging W.T. cover.

Endorsement at first survey and at surveys for renewal of Certificate:—

The fittings and appliances are in accordance with the particulars shown on this form (or as now modified) and are in good condition.

