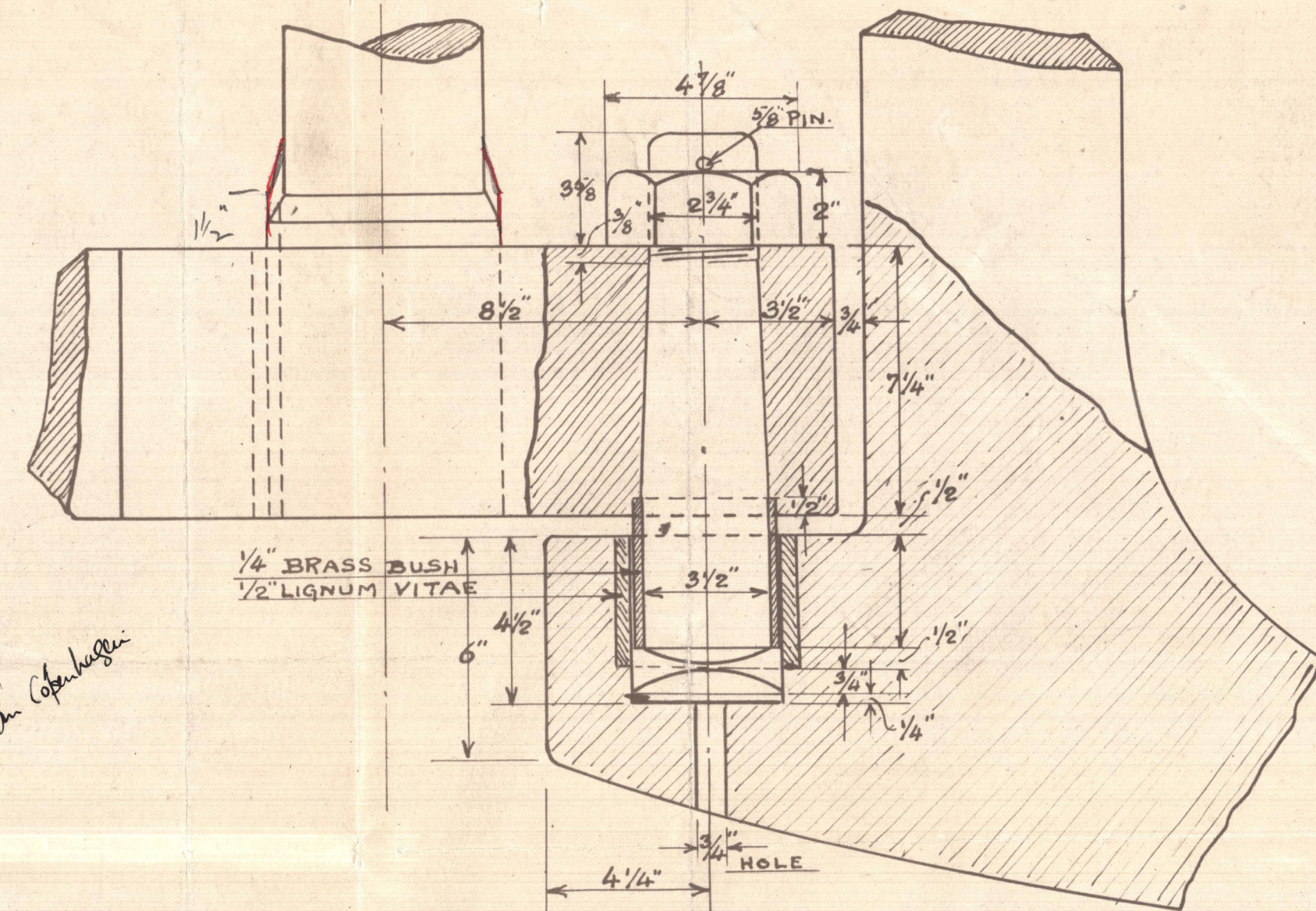


ONE STERNFRAME OF CAST STEEL COMPLETE AS PER PLANE.  
 ONE RUDDERFRAME OF FORGED IRON COMPLETE WITH NUTS ETC. AS PER PLANE.  
 ONE RUDDERTILLER OF FORGED IRON.

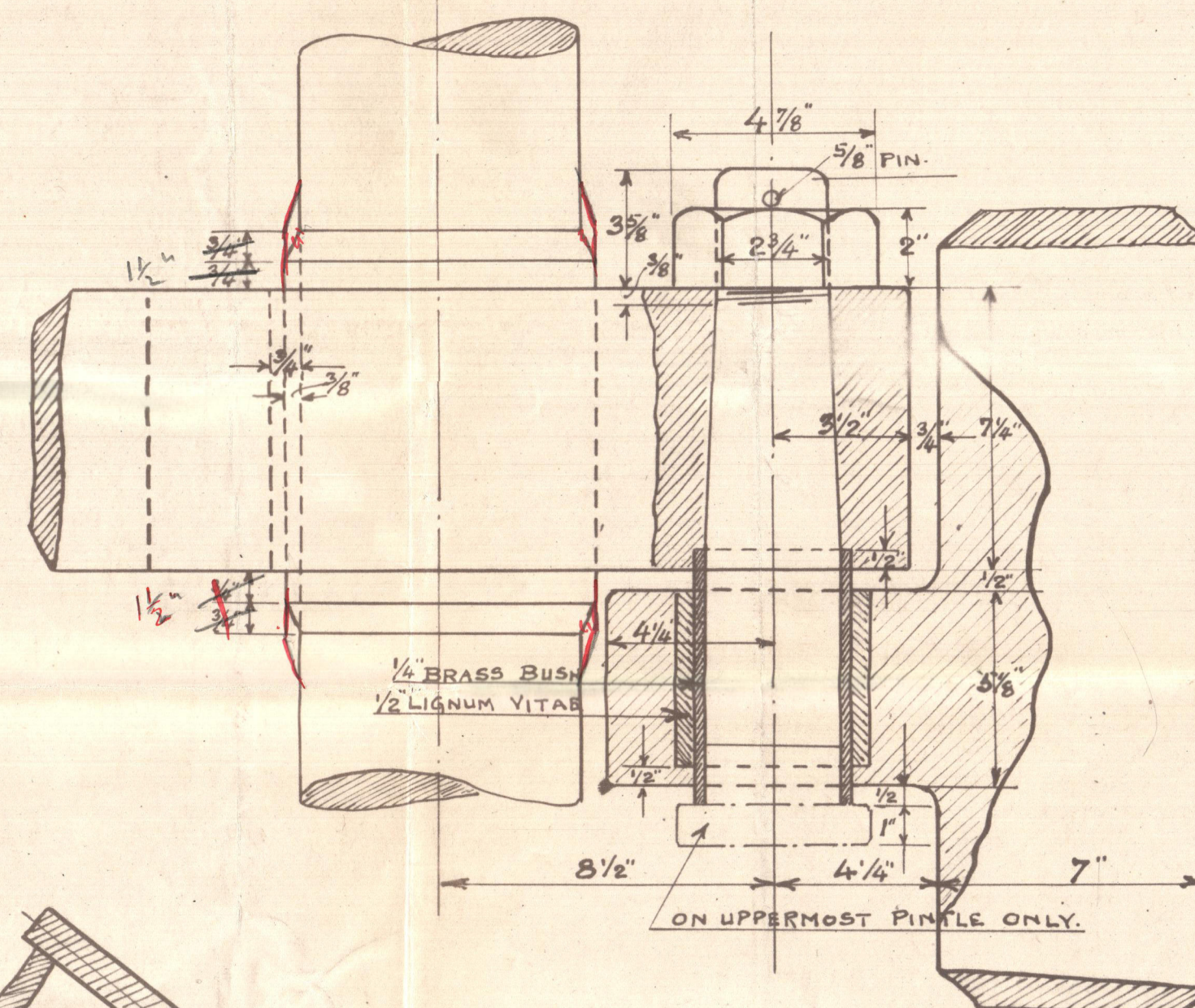
30 NOV 1922

RIVETING IN STERNFRAME: 2 ROWS  $\frac{1}{8}$ " RIVETS SPACED  $5\frac{5}{8}$ " C.T.C.  
 RUDDERFRAME: SINGLE ZIG-ZAG  $\frac{1}{8}$ " RIVETS  $5\frac{5}{8}$ " C.T.C.

ALL MEASUREMENTS IS AS FINISHED MADE.



DETAILS OF LOWEST PINTLE  
 SCALE: 3" = 1'-0"

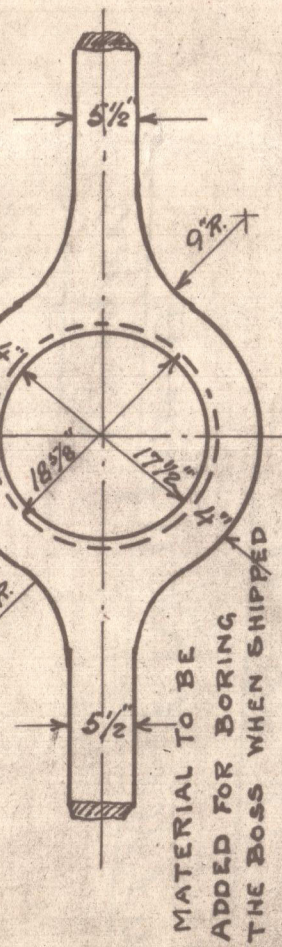
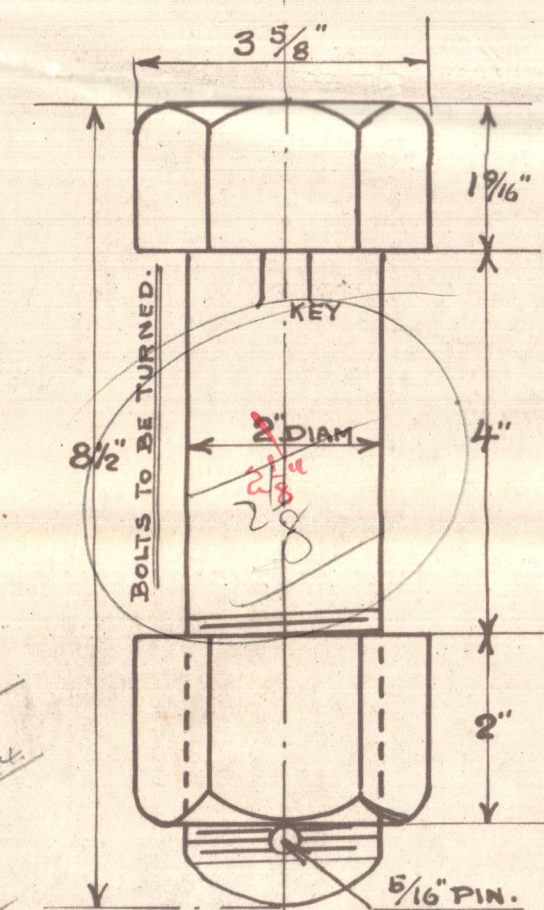


DETAILS OF PINTLES & GUDGEONS  
 SCALE: 3" = 1'-0"

SKETCH OF COUPLING  
 SCALE 3" = 1'-0"  
 6 BOLTS 2" DIAM

DETAILS OF SIDESTOPPER  
 SCALE 3" = 1'-0"

DETAILS OF  
 COUPLING BOLTS  
 SCALE 6" = 1'-0"

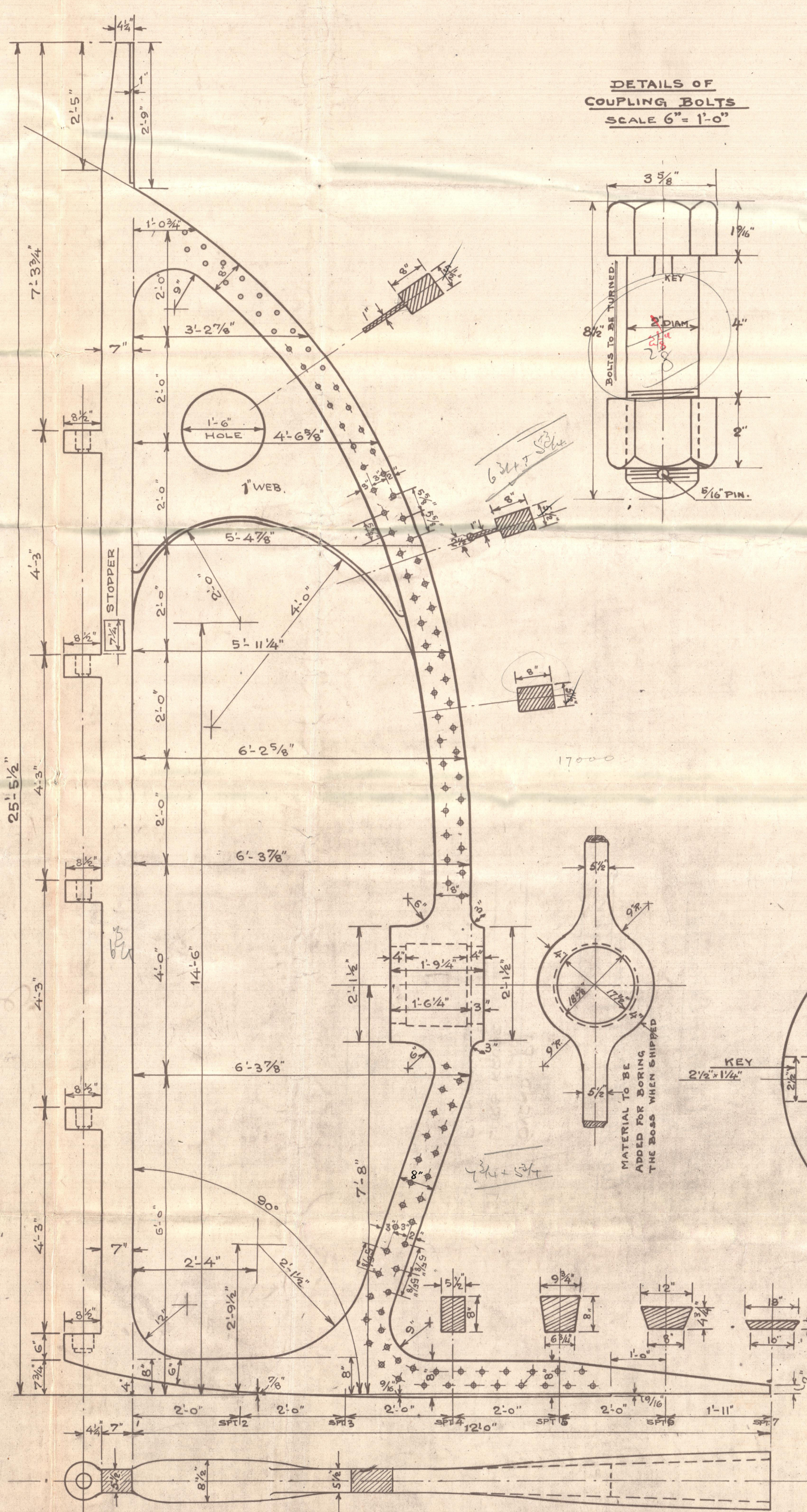
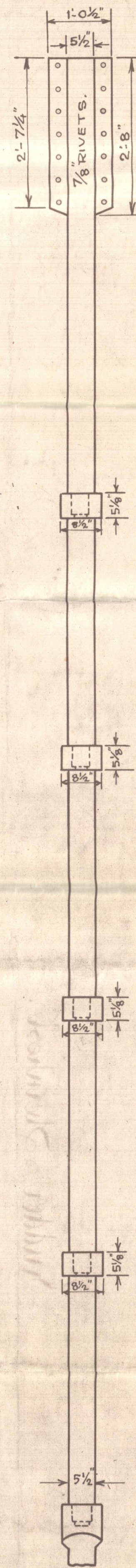
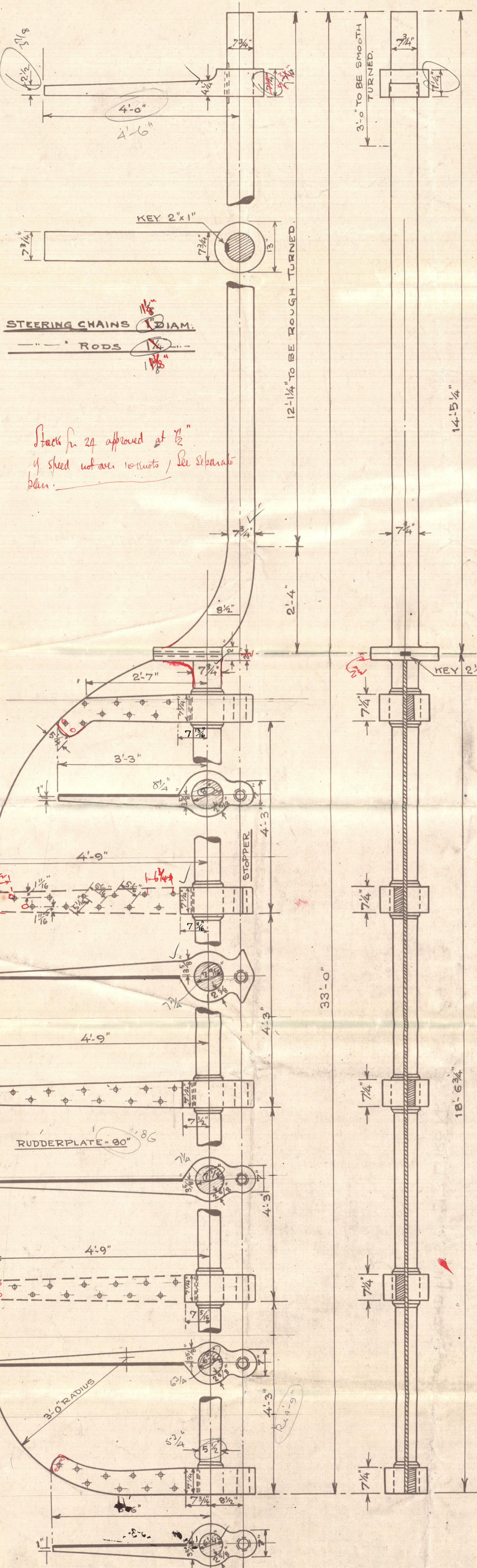


AKTIESELSKABET  
 AALBORG SKIBSVERFT.  
 SKIBS-TEGNESTUEN  
 STERNFRAME & RUDDER  
 TEGNET AF SKALA: 3/4" = 1'-0" TEGNING NR.  
 REVIDERT AF *W. H. H.* DATO: 20-11-22 10233  
 ARKIV: BYG. 20-21-24  
 NR.

© 2020

Lloyd's Register  
 Foundation.

003321-003327-0033



Stack n. 24 approved at 1/2"  
 if shed not over 10 mts / see separate  
 plan.

Approved *[Signature]*  
 See also 6-11-23  
 also 23-3-23 in Copenhagen



Aalborg 20/21 ~~22~~

Rudder & Sternframe

Bag.

Akt "Aalborg" Skibsværft

Nos 20. 21 + 24

Rudder & Sternframe

6 12 22

20 SVEND PIL

21 LARS KRUSE

24. P. MADSEN

3

003321-003327-0033



© 2020

Lloyd's Register  
Foundation



2

Rudder & Sternpost.

Akt Aalborg Skibs.

N<sup>os</sup> 20 & 21.

L. 12. 22.

20<sup>5/8</sup> "SVEND PII."

21<sup>5/8</sup> "LARS KRUSE"



© 2020

Lloyd's Register  
Foundation

003321-003327-0033