

14.6.15

# MIDSHIP SECTION

STEEL SCREW TRAWLER

## N° 653

DIMNS 120'-0" B.P. x 21'-6" EXT x 12'-3" MOULDED.

SCALE  $\frac{1}{2}$ " = 1 FOOT.

TO CLASS 100A1 STEAM TRAWLER.

PLAN No. 5600

FOR ENCLOSURE TO

*Messrs Lloyd's*

*Hull*

FROM

COCHRANE & SONS, LTD.

SHIPBUILDERS, SELBY.

DATE 11/6/15

*J.S.D.*

3" x 3/4" SOLID BEAD.

BULWARKS - .31" AND  
.37" IN WAY OF GALLOWS.

SHEERSTRAKE 36" x 50" x .37"

STEEL RAIL 6 1/2" x 3" x 40 B.A.

STANCHIONS 7" x 35 B.B.

STRINGER ANGLE 3" x 3" x .37"

STRINGER PLATE 50" x 30" x .31"  
ANGLE SHOES

DECK TIES 8" x .37"

DECK 5" x 3" PITCH PINE

BEAMS 5" x 3" x 50 ANGLE ON ALTERNATE

FRAMES

KNEES 16 1/2" x 25"  
4-3/4" RIVETS

FRAMES 4" x 3" x 40 ANGLES SPACED 21"

7" CAMBER

APART AND AS PER PROFILE.

REVERSE D° - 2 1/2" x 2 1/2" x 25 ACROSS

FLOORS WHERE NOT CEMENTED UP.

DOUBLE IN E & B SPACE

FLOORS 16" x 31" x 43 IN E & B SPACE

BULKHEADS AS PER PROFILE

RUDDER AS PER RULE

STERNPOST 6" x 3"

STEM 7 1/2" x 1 5/8"

HOLD PILLARS 2 1/2" DIA<sup>S</sup> SOLID  
2-7/8" RIVETS TOP & BOTTOM

5" x 4" x 40  
SINGLE ANGLE

43" - .37"

ROLLING CHOCK 35'-0" @  
7" x 35" BULB BAR AND 2 BARS  
3" x 3" x .37"

5" x 4" x 40 SINGLE ANGLE.

CENTRE KEELSON 7 1/2" x 4 1/2" BULB BAR  
ANGLES 4" x 3" x 43"

GARBOARD .43" - .37"

KEEL 7 1/2" x 1 5/8"

### NUMERALS

B+D = 33.62'  
L(B+D) = 4035'

### PROPORTIONS

DR = 9.79'  
DR = 5.61'

### EQUIPMENT

1 ANCHOR SCWTS EX STOCK OR 6/4 STOCKLESS

1 " 4 1/2 " " " 5 1/2 "

1 KEDGE 2 1/2 " " " "

90 FATHOMS 1" CABLE

60 " 5 1/2" HAWSER

60 " 4" WARP.

### RIVETING

BUTTS OF SHELL PLATING LAPPED & DOUBLE  
RIVETED EXCEPT GARBOARD & SHEERSTRAKE  
WHICH ARE TO BE STRAPPED & DOUBLE  
RIVETED. LANDINGS DOUBLE RIVETED.  
BULWARKS SINGLE RIVETED

DECK PLATED OVER IN WAY OF MACHINERY  
SPACE. ENGINE & BOILER CASING AS  
PREVIOUSLY APPROVED.

*J.S.D.*  
14.6.15.

© 2020

Lloyd's Register  
Foundation

003321-003327-0016



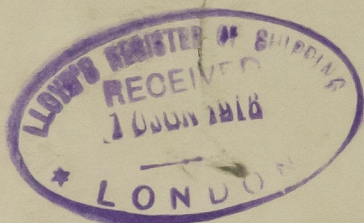
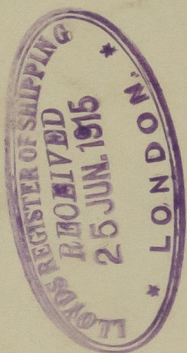
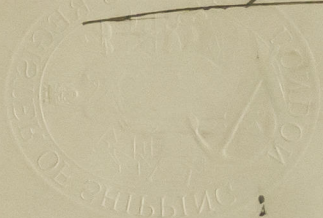
COCHARANE & SONS LTD

MIDSHIP SECTION

Nº 653

55" SAURIAN "

HULL RPT Nº 29360



© 2020

Lloyd's Register  
Foundation