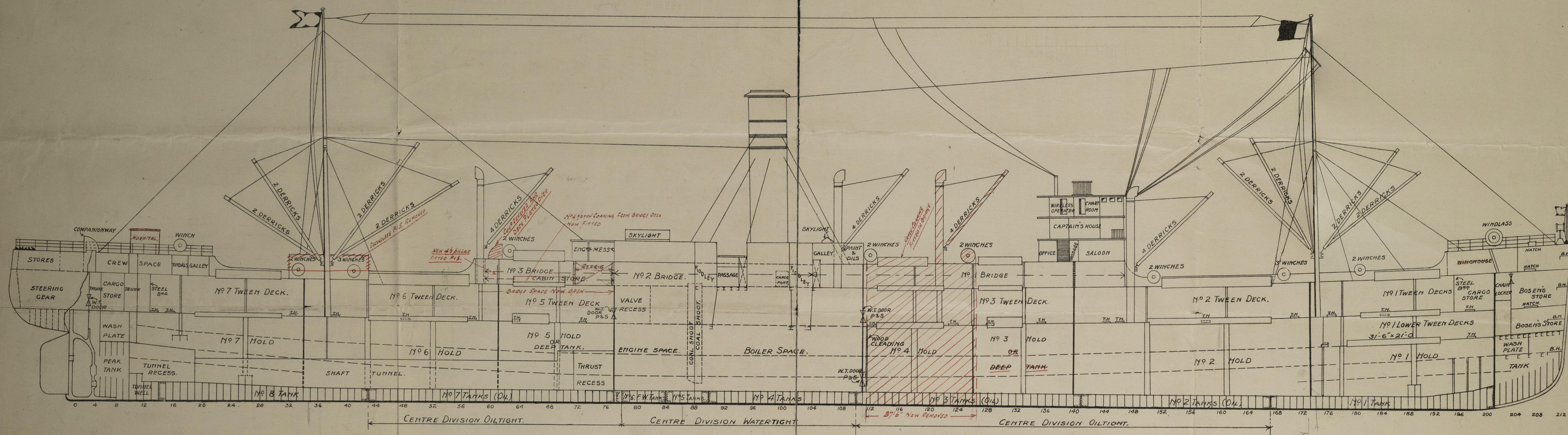


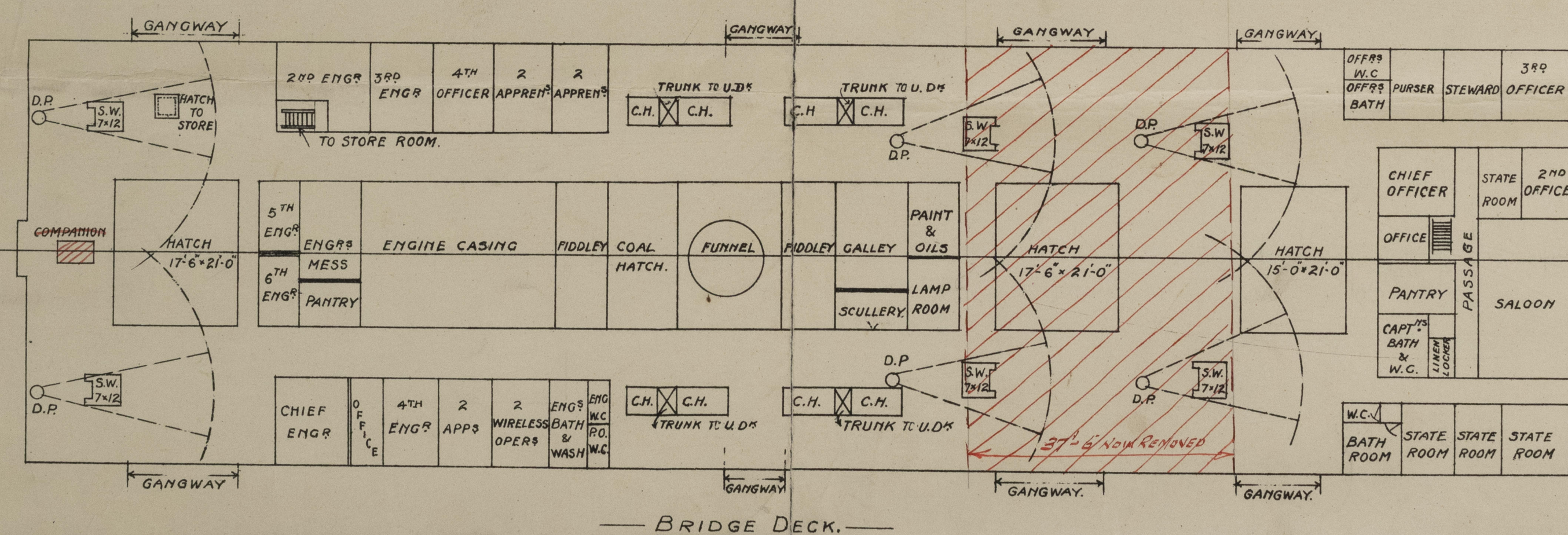
SCALE  $\frac{1}{4}$ " = 1 FOOT.

LENGTH OVERALL <sup>501'-0"</sup>538'-6" LENGTH B.P. <sup>480'-0"</sup>518'-0" BREADTH EXT. <sup>38'-4 1/2"</sup>63'-10 3/4" DEPTH MLD. <sup>38'-3 3/4"</sup>38'-3 3/4" OFFICIAL NUMBER. 143690.

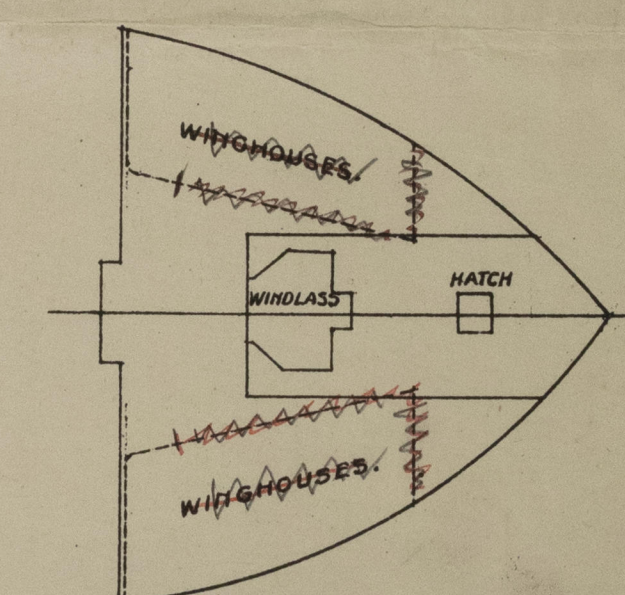
NETT TONNAGE 6192 GROSS TONNAGE 9743 N.H.P. 1114.



BUNKER CAPACITIES.		TONS.
COMPARTMENTS.		
BOILER SPACE BELOW MAIN DECK.	P.S.	274
"	S.S.	241
ENGINE SPACE TWEEN DECK	P.S.	103
"	S.S.	155
BOILER SPACE	P.S.	277
"	S.S.	287
COAL SHOOT'S BRIDGE SPACE & STOW HOLD 4 7/8 TONS BRIDGE		30
TRUNK HATCHES BETWEEN UPPER & LOWER PERMANENT		1,370
RESERVE BUNKERS.		
BRIDGE SPACE ALONGSIDE EX B CASINGS.	P.S.	213
"	S.S.	212
HATCH IN BOILER CASING.		53
BRIDGE SPACE ABAFT ENGINE CASING		325
TOTAL RESERVE.		803
GRAND TOTAL.		2,173
CAPACITIES ARE TAKEN AT 45 CUBIC FEET PER TON, AND TO BOTTOM OF BEAMS AND SHIP OF SHIP		
THE ENGINE AND BOILER TWEEN DECKS AND RESERVE BUNKERS ARE INCLUDED IN CARGO CAPACITIES.		



WATER BALLAST.		TONS	
COMPARTMENTS.		OIL.	
Nº1 TANK		207	180
Nº2 TANKS (DIVIDED)		336	30
" 3 " ( " )	225 S.S. & 223 P.S.	448	40
" 4 " ( " )		284	
" 5 " ( " )	(FRESH WATER)	83	
" 7 " ( " )		455	408
Nº8 TANK		221	190
	TOTAL	2034	1,493
AFTER PEAK TANK		90	
FORE " "		11	
AFTER DEEP TANK		1,568	
FORW " "		1,490	
	TOTAL	5,293	
FRESH WATER IN DOUBLE BOTTOM.			
Nº6 TANK. PORT.		41.5	
" " STARBOARD		41.6	
	TOTAL	83	
GRAND TOTAL		5,376.	

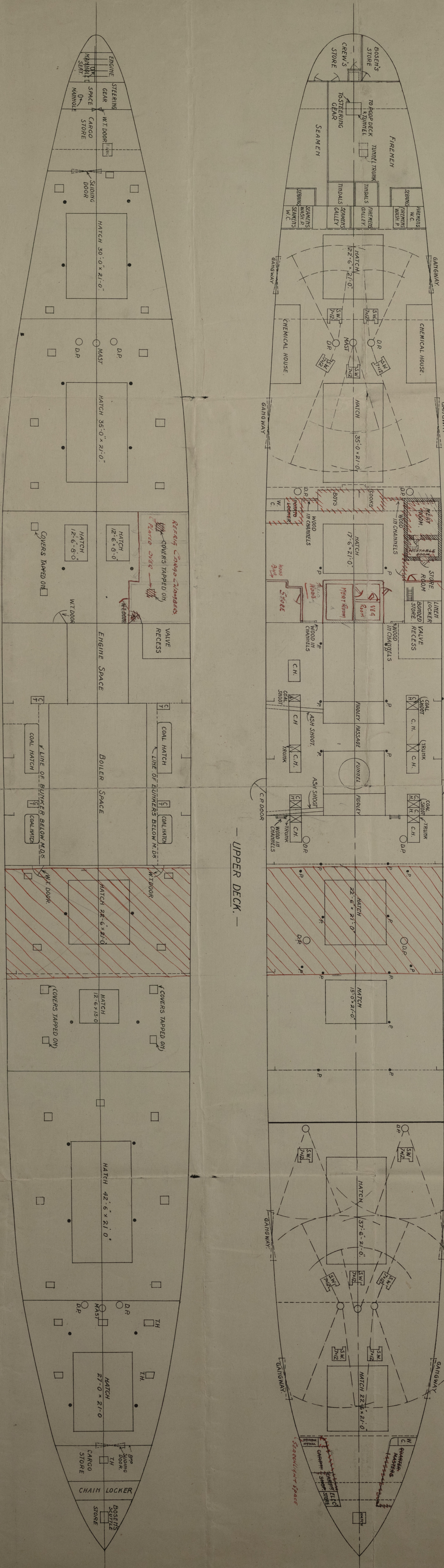


POOP DECK.

— FORECASTLE DECK



S.P. Mathura,  
Mahr. ref. No. 15342.



CARGO CAPACITIES.			
COMPARTMENTS.	INSIDE OF SPARRING		GRAIN TOP OF BEAMS SKIN OF SHIP
	TOP OF BEAMS	BOTTOM OF BEAMS	
Nº 1 HOLD	3,561.0	3,426.0	37,640
" 2 "	11,366.0	11,040.0	116,890
" 3 "	49,060.0	47,250.0	50,350
" 4 "	50,970.0	49,310.0	52,280
" 5 "	51,650.0	49,680.0	53,090
" 6 "	82,070.0	79,240.0	84,800
" 7 "	34,550.0	33,020.0	37,470
TOTAL OF LOWER HOLDS	417,470	402,800	432,520
Nº 1 LOWER TWEEN DECKS.	20,950	19,260	22,080
" 1 UPPER " STORE ROOM	5,280	4,930	5,640
" 1 " " "	30,340	28,890	31,620
" 2 TWEEN DECKS	63,400	60,440	65,480
" 3 " " "	57,030	54,360	58,890
BOILER SPACE TWEEN DECKS P.S.	12,630	11,910	13,400
" " " " S.S.	12,790	12,080	13,560
ENGINE " " " P.S.	4,720	4,450	4,920
" " " " S.S.	7,000	6,630	7,370
Nº 5 TWEEN DECKS	31,230	29,710	32,260
" 6 " " "	51,480	49,130	53,210
" 7 " " "	31,710	30,110	33,120
" 7 " " STORE ROOM	9,390	8,590	10,010
TOTAL OF TWEEN DECKS.	337,950	320,430	351,560
TOTAL.	755,420	723,230	784,080
CHEMICAL STORES	4,200	4,200	4,200
BRIDGE SPACE ABOARD ENGINE CASING	15,580	14,450	15,750
CABIN STORE	2,010	1,830	2,120
BRIDGE SPACE ALONGSIDE E & B CASINGS P.S.	10,120	9,850	10,460
" " " " S.S.	10,060	9,190	10,400
COAL HATCH IN BOILER CASING	2,380	2,380	2,380
BRIDGE SPACE FORWARD OF BOILER CASING.	50,770	46,710	51,840
TOTAL	95,120	88,010	97,150
BOSEN'S STORE FORE PEAK (UPPER)	2,650	2,420	3,080
" " (LOWER)	1,180	1,040	1,460
" " INFOOP ABOARD FRAME B P.S.	1,180	1,040	1,270
" " " " B.S.S.	1,520	1,360	1,630
CREW'S " " " " B.S.S.	6,630	5,860	7,440
TOTAL	101,650	93,870	104,590
GRAND TOTAL.	857,070	817,100	888,670

CARGO SCALE.			
FREEBOARD	DRAUGHT	DEADWEIGHT IN TONS S.W.	TONS PER INCH
8	XXX	15400	65.8
9	XXIX	15200	65.2
10	XXVIII	15000	64.6
11	XXVII	14800	64.1
12	XXVI	14600	63.7
13	XXV	14400	63.2
14	XXIV	14200	62.8
15	XXIII	14000	62.4
16	XXII	13800	62.1
17	XXI	13600	61.8
18	XX	13400	61.5
19	XIX	13200	61.2
20	XVIII	13000	60.9
21	XVII	12800	60.6
22	XVI	12600	60.3
23	XV	12400	60.0
24	XIV	12200	59.7
25	XIII	12000	59.4
26	XII	11800	59.1
27	XI	11600	58.8
28	X	11400	58.5
	IX	11200	58.0

R LLOYD'S REGISTER  
20' 2 1/2"  
D.W. 14900  
INCLUDING STORES  
AND FRESH WATER.