

RUDDER FRAME

OF FORGED STEEL TO PASS BRITISH CORPORATION.

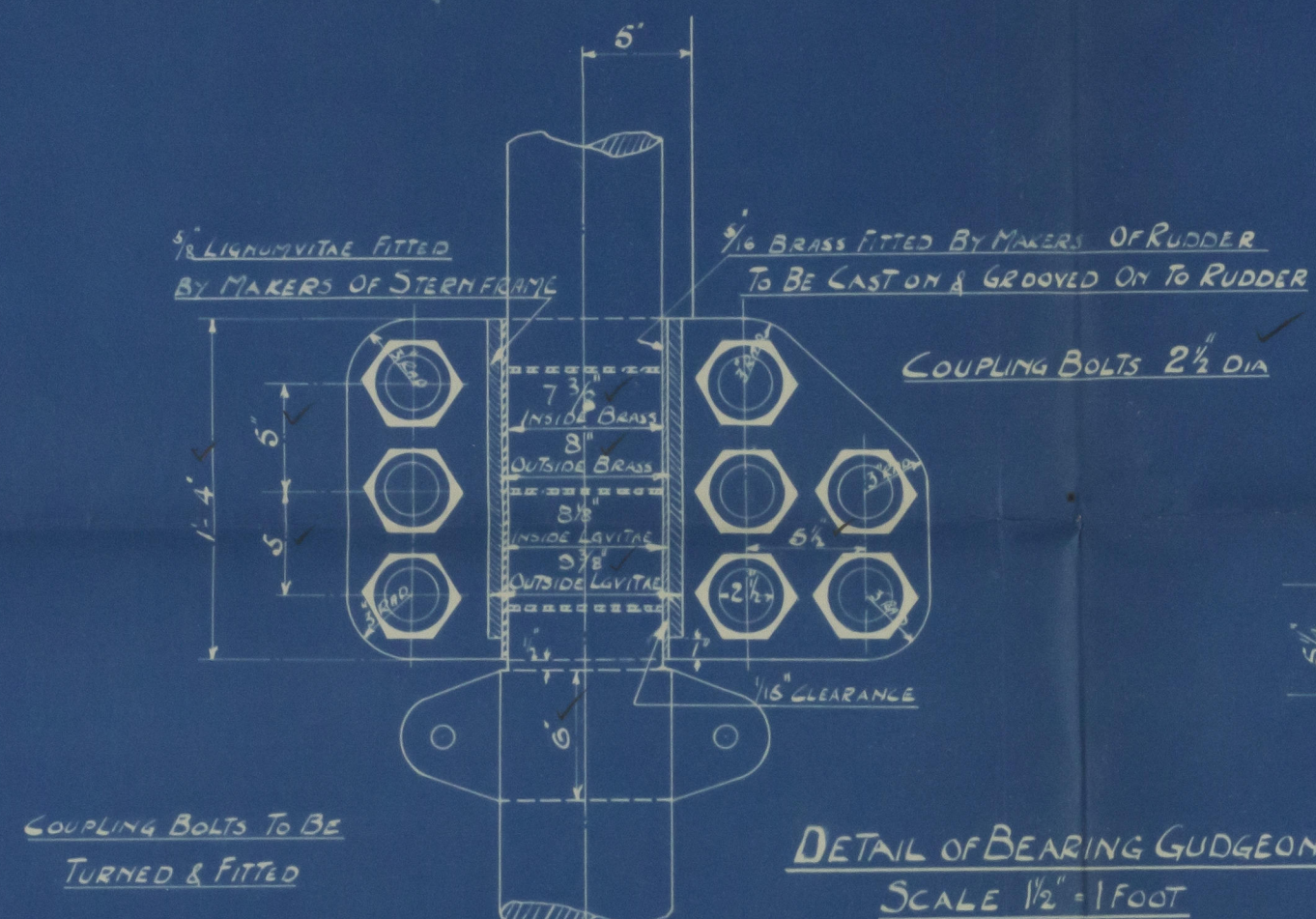
SCALE:- $\frac{1}{2}" = 1 \text{ FOOT}$

C.G AFT OF C LINE OF PINTLES = 1.86 FEET

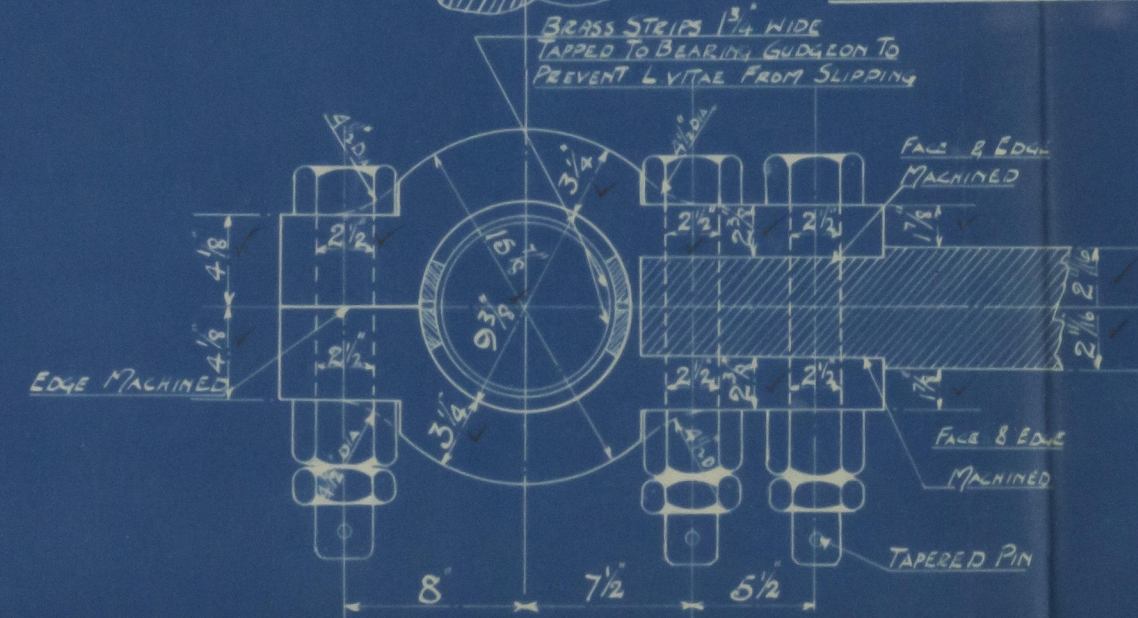
SPEED IN KNOTS = 8 KNOTS

TOTAL LENGTH OF RUDDER ABOUT 23'-3"
CORRECT LENGTH WILL BE SENT LATER

STOCK TURNED FOR FULL LENGTH



DETAIL OF BEARING GUDGEON
SCALE 1 1/2" = 1 FOOT



DETAIL OF BOTTOM GUDGEON
SCALE $1\frac{1}{2} = 1$ FOOT

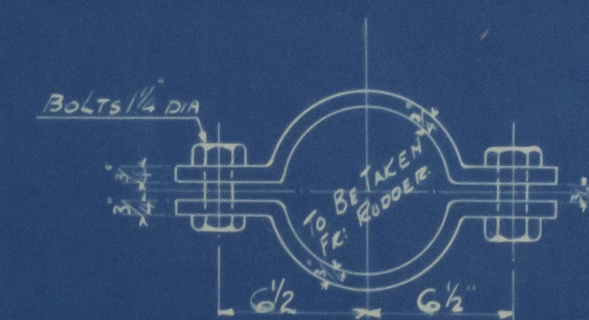
DETAIL of ARMS.
SCALE 1 1/2" = 1 FOOT

ARMS TO BE SHRUNK & KEYED ON

HOLES $1\frac{3}{16}$ " DIAM COUNTERSUNK SPACED $4\frac{1}{2}$ " TO $6\frac{3}{4}$ " C. TO C.

DETAIL OF RING TO PREVENT LIFTING

SCALE $1\frac{1}{2}" = 1 \text{ FOOT}$



NOTE

ALL MACHINING AND DRILLING ETC. TO BE DONE BY MAKERS
POSITION OF KEYWAY FOR CROSSHEAD & TILLER TO BE SENT LATER
ARMS TO BE MADE FOR PLATE TO REEVE EASILY
CHECKNUTS FITTED WITH TAPERED PINS TO BEARING GUDGEON BOLTS
WEIGHT OF FRAME TO BE PAINTED ON BEFORE DISPATCH

Lloyd's Register
PLAN No. 98/238-99

It

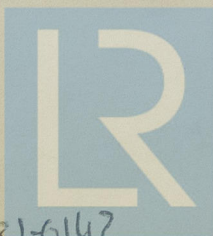
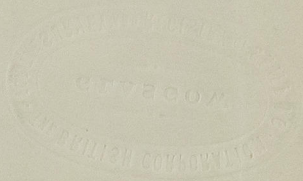
Stern Frame.

Lowpen D. D.

238-9.

y - 1 - 24

Keydon ex "Swiftwater." KEYDON
Keywest ex "Surenwater"



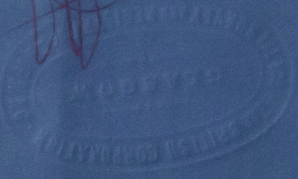
© 2020

Lloyd's Register
Foundation

063275-003281-6142

B.C.

Approved
7-1-27
[Signature]



7 JAN 1927



© 2020

Lloyd's Register
Foundation