

Lloyd's Register of Shipping.

SURVEYS FOR FREEBOARD.

(CONDITIONS OF ASSIGNMENT.)

Ship's Name "KING EDGAR"

Port of Survey Cardiff.

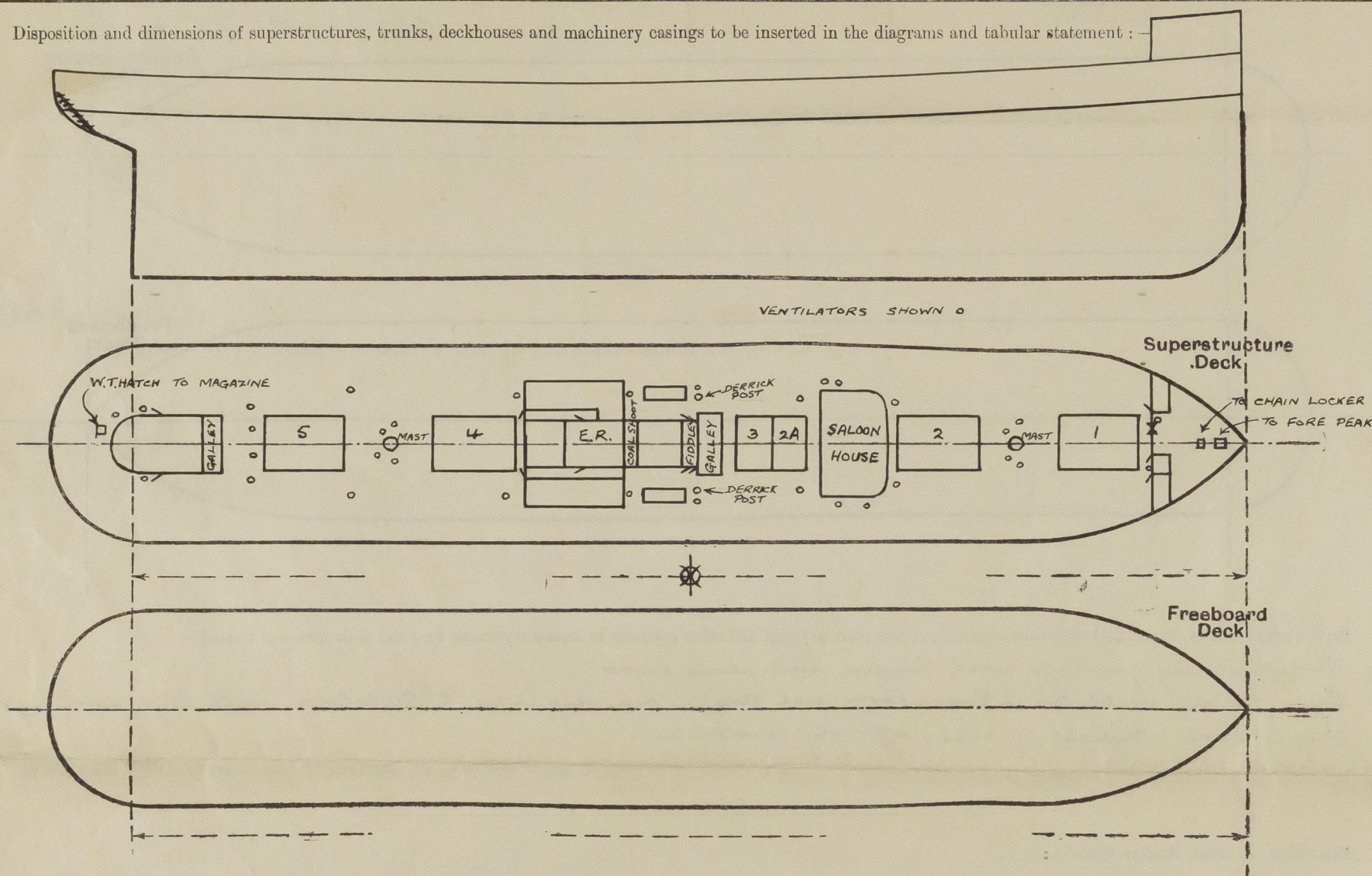
Official Number 169444

Surveyor's Signature E. J. Grimblecombe.

Nationality and Port of Registry British. London.

Date of Survey 15th & 16th December, 1946.

Disposition and dimensions of superstructures, trunks, deckhouses and machinery casings to be inserted in the diagrams and tabular statement:



Particulars of Superstructures, Trunks, Casings, Deckhouses.

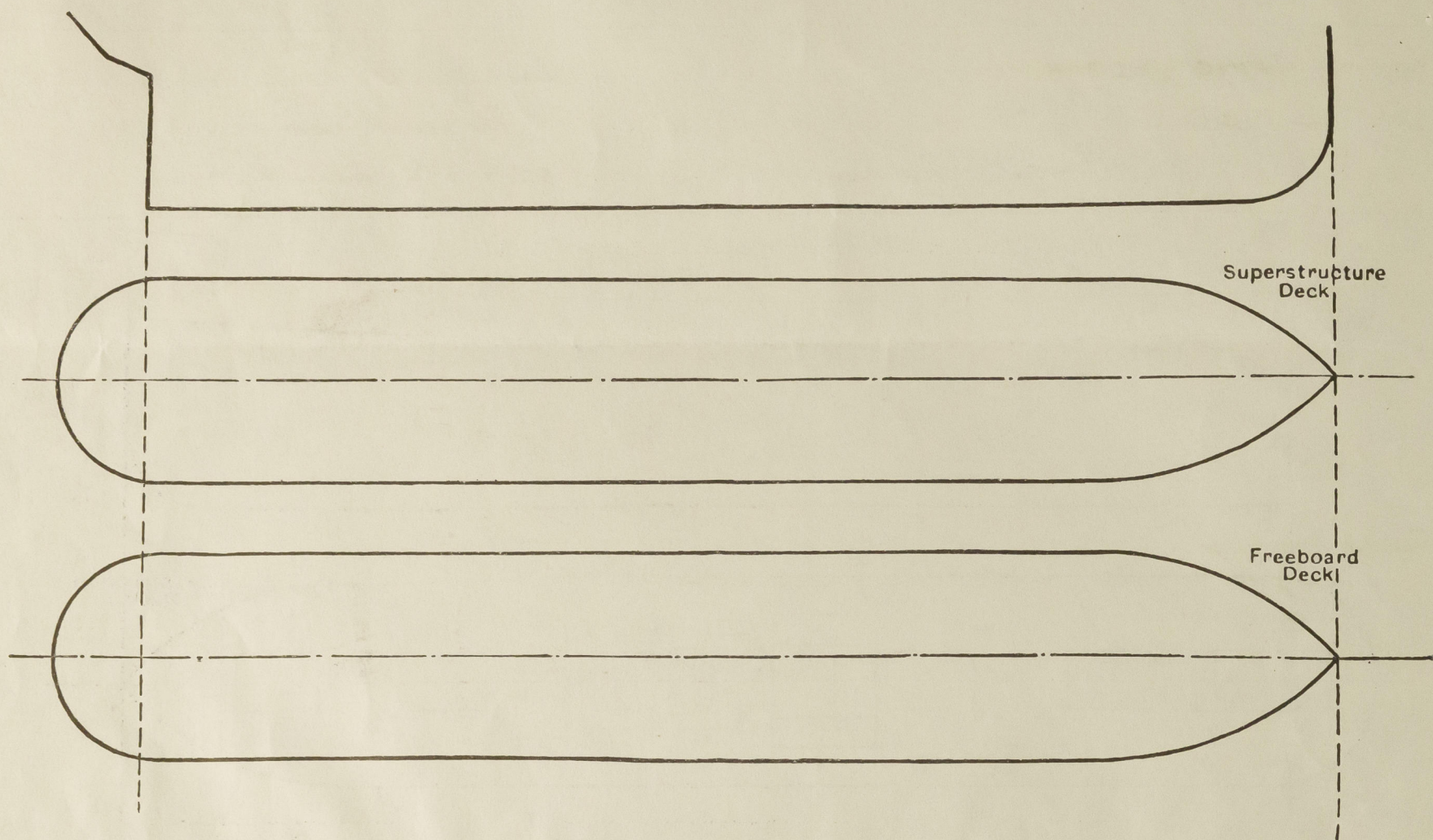
	Coaming	Plating	Stiffeners	Spacing	End Attachments of Stiffeners	Size of Openings	Height of Sills	Height of Casings
Poop Bulkhead								
Raised Quarter Deck Bulkhead ...								
Bridge, After Bulkhead								
Bridge, Forward Bulkhead								
Forecastle Bulkhead	Vert. plates	.30	4 x 2 1/2 x .25	27"	none	One 5'-3" x 4'-1" Three 5'-1" x 2'-1"	18"	7'-6"
Trunk, Aft								
Trunk, Forward								
Exposed Machinery Casings on Freeboard or Raised Quarter Decks ...	Vert. plates	.30	4" flange	31"	Bolts at top	Two 4'-9" x 2'-0" One 3'-2" x 1'-9"	24" 7 1/8"	7'-9"
Exposed Machinery Casings on Superstructure Decks								
Machinery Casings within Superstructures not fitted with Class I Closing Appliances								
Deckhouses on Flush Deck Ships (Aft)	Vert. plates 3/8" to 1/4"		Lined inside			Two 4'-9" x 2'-0"	24"	7'-6"

Particulars of Closing Appliances (state if capable of being manipulated from both sides).

Poop Bulkhead	
Raised Quarter Deck Bulkhead ...	
Bridge, After Bulkhead	
Bridge, Forward Bulkhead	
Forecastle Bulkhead	One opening with plate secured by hook bolts. 3 hinged steel doors, manipulated both sides.
Exposed Machinery Casings on Freeboard or Raised Quarter Decks ...	Hinged steel doors. Also hinged steel door to engineers' alleyway each side, all manipulated both sides.
Exposed Machinery Casings on Superstructure Decks	One each side to fiddley and one stbd to ash hoist.
Machinery Casings within Superstructures not fitted with Class I Closing Appliances	
Deckhouses on Flush Deck Ships (Aft)	Hinged steel doors manipulated from both sides.

PARTICULARS OF PROTECTION TO OPENINGS, ETC.

The following diagrams should be used to indicate the positions of cargo and coaling hatchways, gangway, cargo and coaling ports, ventilators, companionways, etc., which would affect the seaworthiness of the ship:—



Particulars of fidley, funnel and ventilator coamings, engine room skylight and other openings in machinery casing tops and their means of closing:—

Three fidley gratings with hinged steel plate covers.
Four 24" dia. ventilators to Engine Room, and two 30" dia. ventilators to Stokeshold, with high coamings.
Engine Room skylight of steel, strongly constructed.

Particulars of Flush Bunker Scuttles:—

none

Particulars of Companionways:—

Entrance to gunners' accommodation in after masthouse. Steel door manipulated from both sides, 24" sill.

Particulars of Ventilators in exposed positions on freeboard and superstructure decks:—

1-10" to magazine aft. 2-24" derrick post vents to holds.
3-6" to steering gear compartment. 2-10" to store.
2-12" to gunners' accommodation. 4-10" to 'tween deck bunks.
5-12" to after accommodation. 2-10" to tunnel escapes.
17-18" to holds. 2-18" to refug. room.
1-14" to No. 5 hold. 1-10" to stewards' store.

All ventilator coamings 3'-0" high welded to deck.
Wood plugs and canvas covers provided for all ventilators.

Particulars of Air Pipes in exposed positions on freeboard, raised quarter, or superstructure decks:—

After peak } 2'-6" to openings with gauge covers.
D.B. feed tanks }
Fresh water tanks }
Fore peak } 2'-6" to openings with wood plugs and canvas covers.
Deep ballast tanks }
No. 1, 2, 3 & 4 D.B. tanks }

Particulars of Gangway Cargo and Coaling Ports:—

none

Particulars of Scuppers and Sanitary Discharge Pipes:—

1-4" P }
3-4" S }
1-2 1/2" P }
2-2 1/2" S }
1-3" P }
3-2" S }
1-1 1/2" P }
2-4" P }
2-4" S }
2-2 1/2" P }
3-2 1/2" S }
3-2" P }
2-2" S }

Midship
Accommodation.

All discharges above 2nd deck. Sanitary discharges fitted with storm valves.

Particulars of Side Scuttles:—

18 ports 4/7 stbd, fitted with hinged deadlights.

Vertical distance of Sill of lowest Side Scuttle above top of keel About 35'-0"

Particulars of Guard Rails:—

3 tier, 3'-6" high, fitted fore-castle and upper decks, except amidships, where bulwarks are fitted.

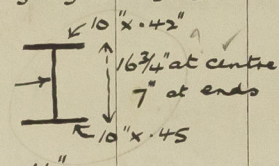
Particulars of Gangways, Lifelines, etc.:—

No gangways. Provision made for rigging lifelines.

Particulars of Freeing Arrangements.

	Length of Bulwark	Height of Bulwark	Size of Freeing Ports	Number each side	Area each side	Rule area each side
After Well ...	✓					
Forward Well ...	✓					
State position of each freeing port ... After Well:— ✓ (F. and A. position and height above deck edge) Forward Well:— ✓						
State whether the freeing ports are fitted with shutters, bars, or rails, and give particulars of such:— ✓						
Additional area where sheer is less than standard. ✓						

PARTICULARS OF PROTECTION TO OPENINGS, ETC.

HATCHWAYS ON FREEBOARD AND SUPERSTRUCTURE DECKS.													
Description of Hatchway	N ^o . 1	N ^o . 2	N ^o . 2A & 3	N ^o . 4	N ^o . 5	Bunker p. & s.	Top of Ex. B. casing	Access to hold, hatch, etc.	To fore peak	To chain locker.	
Dimensions of Hatchway	31'-6" x 20'-0"	31'-0" x 20'-0"	Each 12'-11" x 20'-0"	31'-0" x 20'-0"	31'-0" x 20'-0"	15'-6" x 5'-0"	4'-11" x 18'-0"	3'-0" x 2'-9"	4'-0" x 3'-0"	2'-0" x 2'-6"	
COAMINGS	{	Height above Deck	...	30"	30"	30"	30"	30"	30"	18"	30"	{ 9 x 3 1/2 BA	{ 9 x 3 1/2 BA
		Thickness44 ✓	.44 ✓	.44 ✓	.44 ✓	.44 ✓	.44 ✓	.30 ✓	.40 ✓		
		Sides44	.44	.44	.44	.44	.44	.40	.40		
		Ends44	.44	.44	.44	.44	.44	.40	.40		
Stiffeners	{ 10" x 3 1/2 x 7/16 B.A. }					none	✓	✓			
Brackets, Stays	{ 7 x 3 x 3/8 B.A. on ends }										
HATCH BEAMS	{	Number	...	5	5	2 & 2	5	5					
		Spacing	...	5'-3"	5'-2"	4'-6 1/4 x 3'-1 1/2	5'-2"	5'-2"					
		Scantling and Sketch	...						✓	✓	✓		
		Bearing Surface	...	4"									
FORE AND AFTERS	{	Number	...										
		Spacing	...										
		Unsupported Lengths	...										
		Scantling* and Sketch	...	none									
Bearing Surface	...												
HATCH COVERS	{	Material	...	W.P.				W.P.	W.P.	W.P.	W.P.	W.P.	
		Thickness	...	2 1/2"				3" ✓	3" ✓	2 1/2" ✓	2 1/2" ✓	2 1/2" ✓	
		How fitted	...	F. & A. ✓				Athwart.	F. & A.	Athwart.	F. & A.	Athwart.	
		Bearing Surface	...	3"				3"	3"	3"	3"	3"	
Spacing of Cleats	24"								20" & 24"	15" & 21"	
Number of Tarpaulins	2 ✓								2 ✓	2 ✓	
*Are wood fore and afters steel shod at all bearing surfaces? ✓													
Are battens and wedges efficient and in good condition? ✓													
Are tarpaulins in good condition and in accordance with rule requirements? ✓													
Are lashings provided in accordance with rule requirements? ✓ Locking bars ✓													

Particulars of any special features :—

Endorsement at first survey and at surveys for renewal of Certificate :—

The fittings and appliances are in accordance with the particulars shown on this form (or as now modified) and are in good condition.

ML-2

