

# CARGO STEAMER

MIDSHIP SECTION  
SCALE 1:25

LENGTH OVER P.P. 235'0"  
BREADTH MOULDED 36'9"  
DEPTH 20'0"

## EQUIPMENT

- 3 ANCHORS INCL STOCK 8 1/2 CWT
- 1 STREAM ANCHOR " 0.60 CWT
- 1 KEDGE " 5.31 CWT
- 240 FTH. STUDDCHAIN CABLE 1 1/16"
- 45 FTH. STUDDCHAIN CABLE 1"
- 60 " STEELWIRE 3 1/4" CIRCUM
- 2x90 " HEMP 6 "
- 2x90 " " 5 "

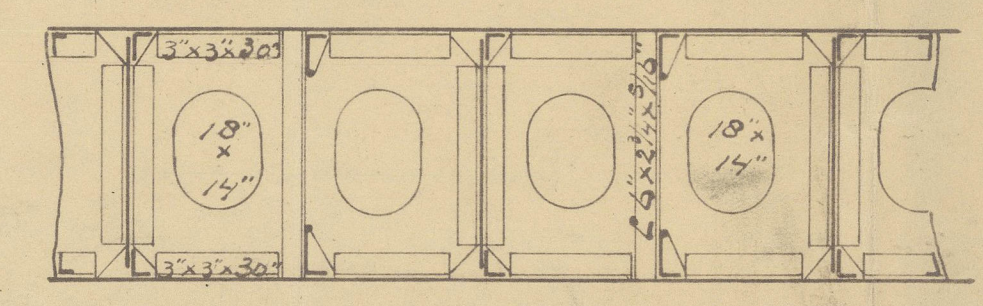
## RIVETING

- OUTSIDE PLATING DOUBLE EDGE LAPS
- KEEL PLATE TREBLE RIVETED BUTTLAPS
- LENGTH OF PLATES ± 32'0"
- BOTTOM, BULK AND SHEERSTAKE TREBLE RIV. BUTTL. 1/2 DOUBLE
- SIDE PLATING " " FORECASTLE DOUBLE " " "
- EDGE LAPS MAINDECK AND POOPDECK SINGLE
- BUTT " DECKPL. DOUBLE FOR 1/2. SINGLE PLTENDS
- " " STRINGER TREBLE " " DOUBLE " "
- EDGES INNER BOTTOM PLATING DOUBLE
- BUTTS " " CENTRE GIRDER TREBLE

Butts of shell plating to be so arranged that only one butt occurs in each frame space between keel and sheerstake

NAAMLOOS VERBODEN  
MAAKTEKOPEN EN VERKOPEN  
VAN P. SMIT JR.  
ROTTERDAM

SIDE GIRDER  
WHERE FLOORS AT ALTERNATE FRAME



In accordance with the approved plan  
Rotterdam 20.4.20  
L.S.



S.S. "Argo"

Reg. 11690.

P. Smith

No. 316 - 317

Midship Section

Spam copy  
correct

~~Gen Box 3122~~  
PLANS TRANSFERRED  
TO SISTER VESSEL

P. J. J. J.

Dis 531



© 2020

Lloyd's Register  
Foundation

003252-003262-0152