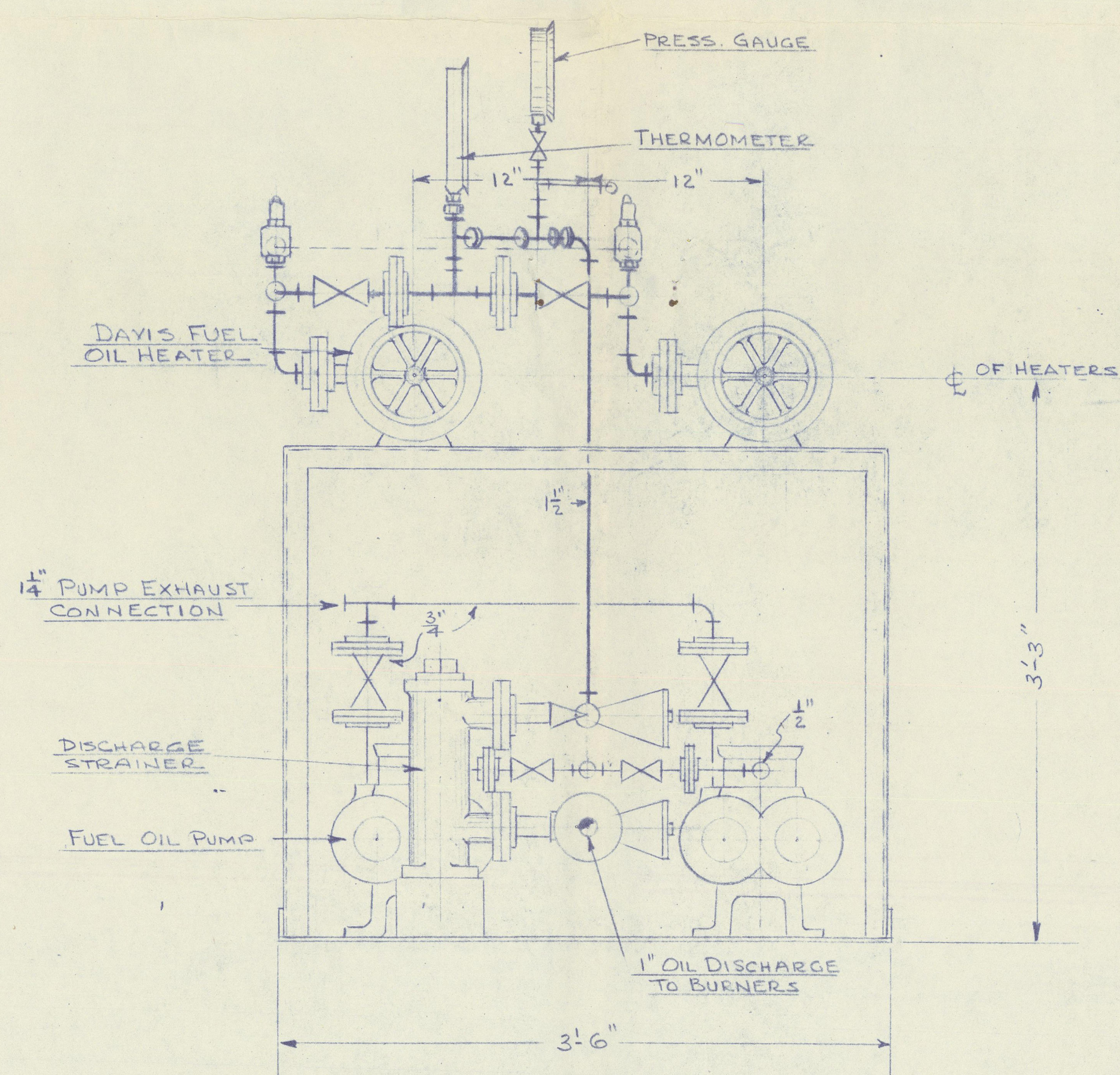


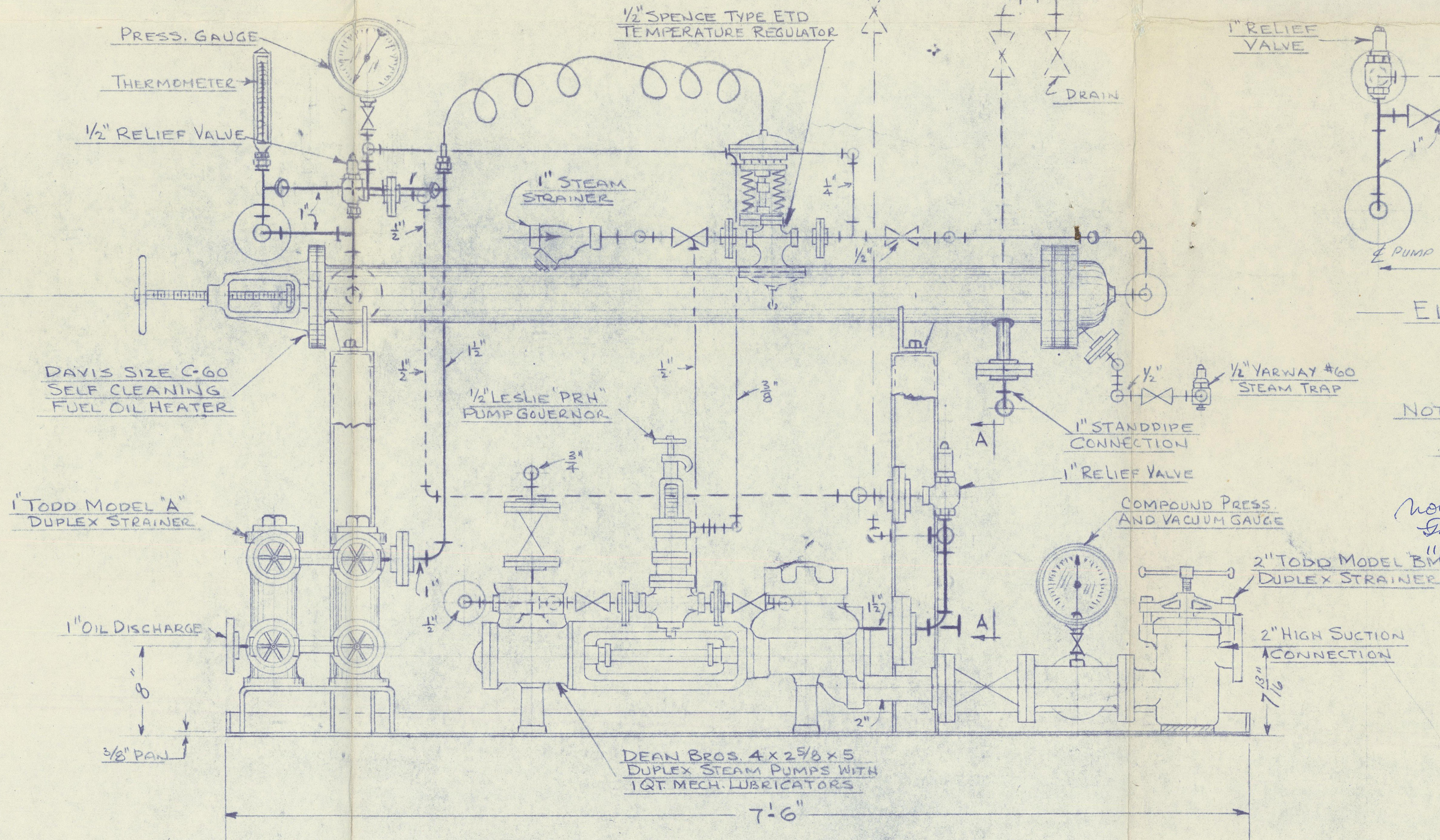
PLAN BELOW HEATERS

PLAN

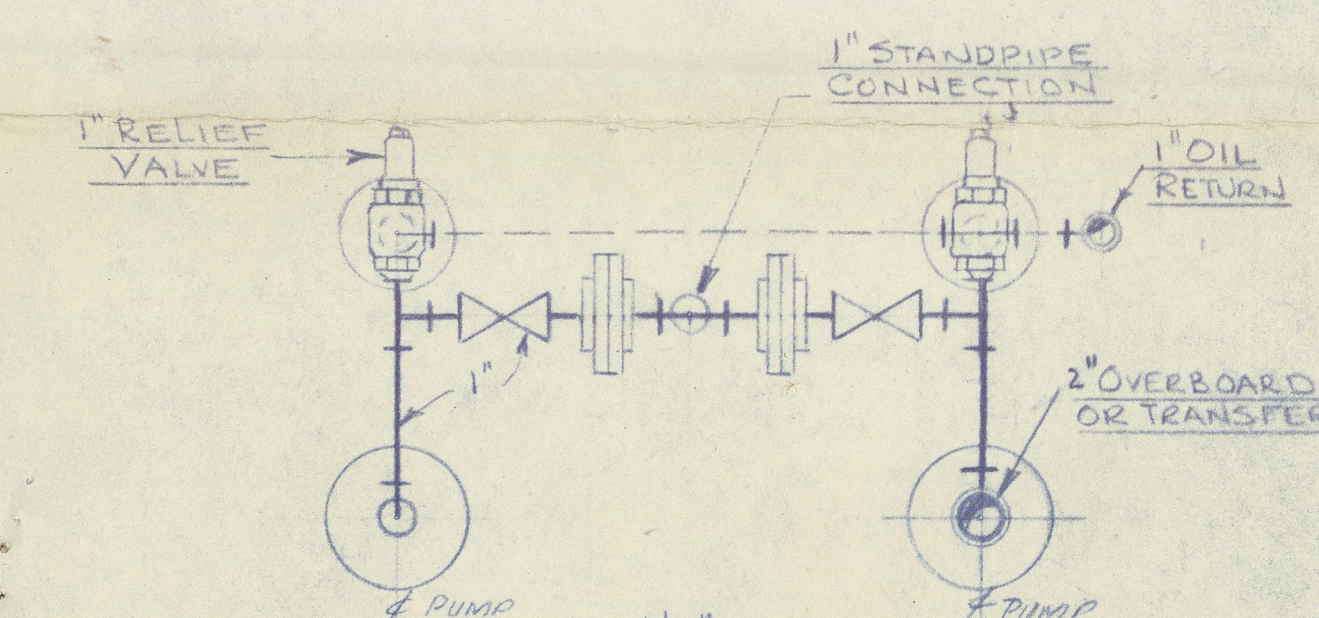
CAPACITY
PUMPS - 5.8 GPM AT 250 P.S.I.
WITH STEAM AT 155 P.S.I.
HEATERS - 350 GPH 80-225°F WITH
STEAM AT 150 P.S.I.



SIDE ELEVATION



FRONT ELEVATION



ELEVATION AA

The remaining requirements of chapter II of the Rules to be complied with so far as they are applicable.

NOTE: ALL PIPE, VALVES & EQUIPMENT IN ACCORDANCE WITH LLOYD'S SPEC'S

noted
JUN 30 1952

APPROVED JUN 30 1952 LLOYD'S REGISTER OF SHIPPING NEW YORK	
OVERBOARD WAS 1" STEAM WAS 1 1/2" AND EXHAUST WAS 1 1/2" <i>OK 6/14/52</i>	
1- REVISED TO SUIT HTRS DELD 6/24/52 <i>AK</i>	
REVISIONS	
JOB NO. A 2712 A	
PROPOSAL NO.	
TODD SHIPYARDS CORPORATION COMBUSTION EQUIPMENT DIVISION 81-16 45TH (LAUREL HILL BLVD) AVE. ELMHURST, QUEENS, N. Y.	
TODD FUEL OIL PUMPING HEATING & STRAINING UNIT	
S/S JONANCY	
LLOYD'S INSPECTION	
DRAWN J.A.K.	APPROVED <i>11/7/52</i>
CHECKED	DATE 6-20-52
SCALE 1 1/2" = 1'-0"	45111-2