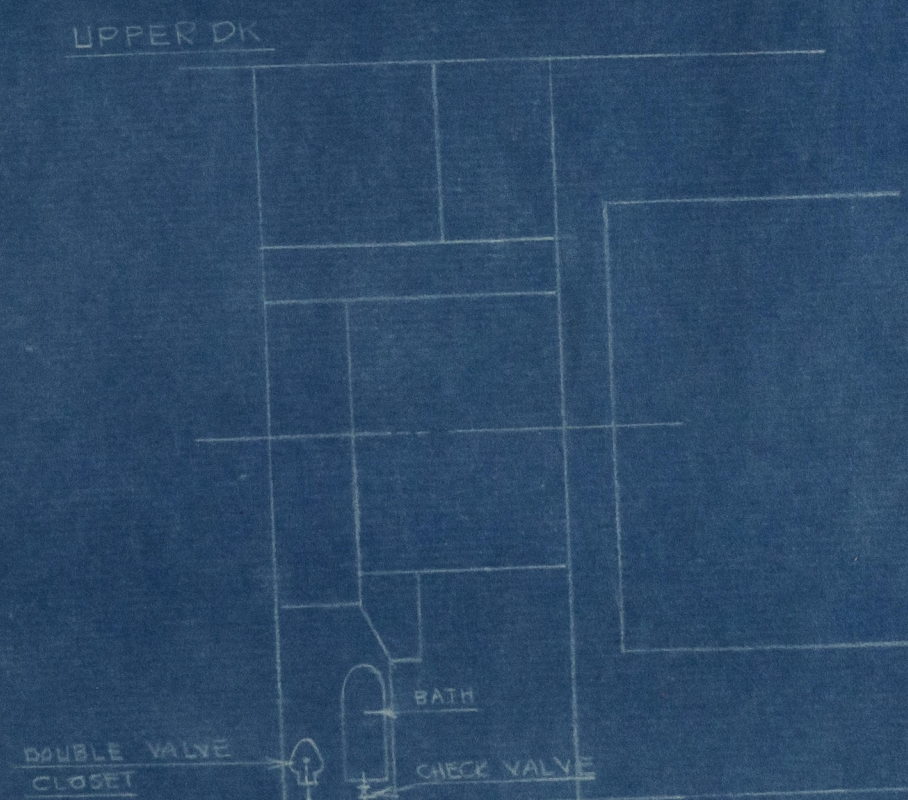
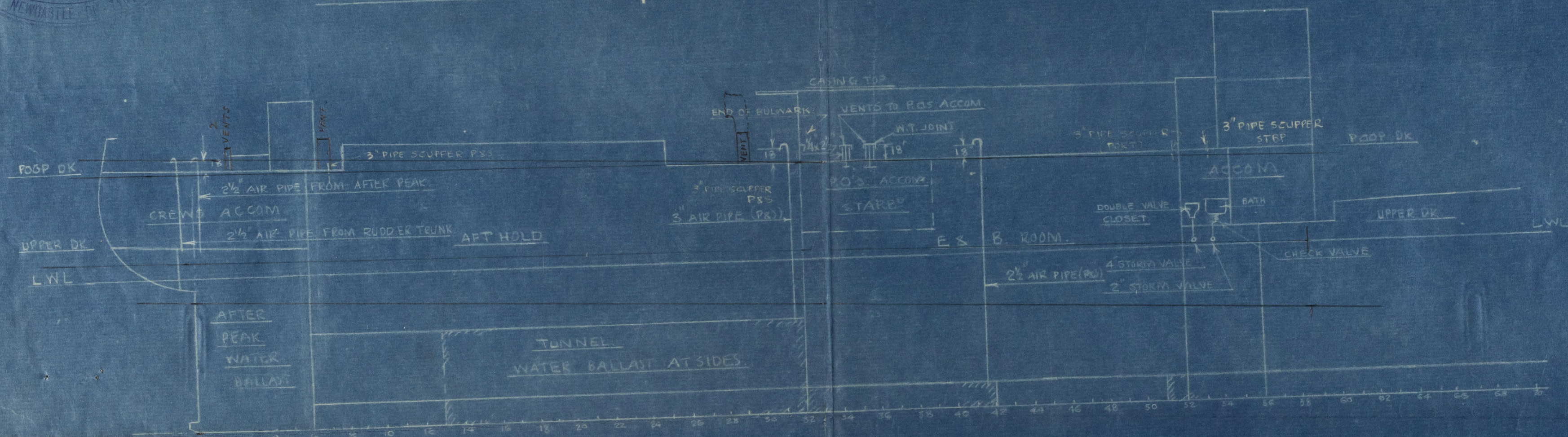


Nº 596 SHIP

POSITION OF AIR PIPES & DISCHARGES

SCALE $\frac{1}{2}$ " = 1 FOOT



003252-003262-0039 1/2

ENCLOSURE TO

Lloyds M/c.

40/0872.

FROM R. & W. HAWTHORN, LESLIE & CO. LTD.,
HEBBURN-ON-TYNE.

003252-003262-0039 1/2

S/S. Thomby

See Nwe Rpt No 92538

Details of Discharges &
for Freeboard
requirements

Hawthorn Leslie

S/S 596



© 2020

Lloyd's Register
Foundation

003252-003262-0039 2/2