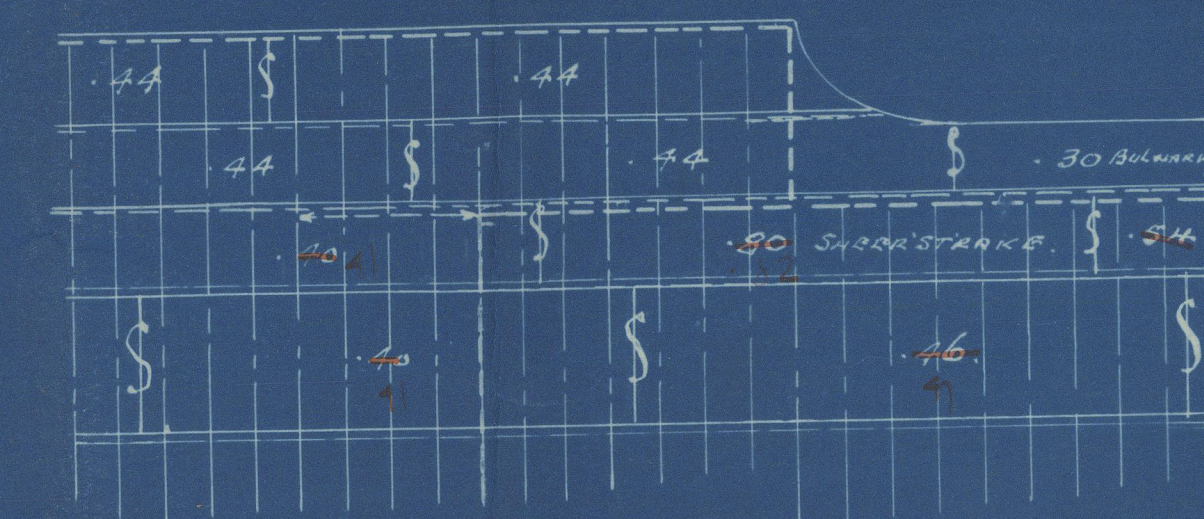


PROFILE AND DECK.

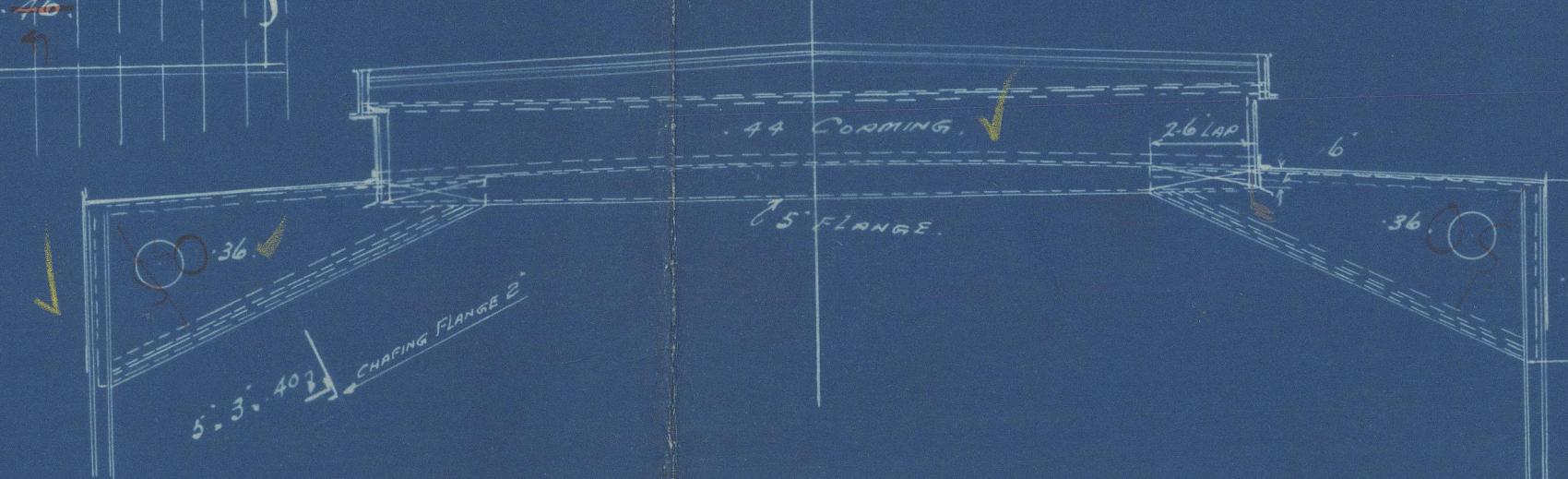
30-11-34 No 596

SCALE 1/8" = 1 FOOT

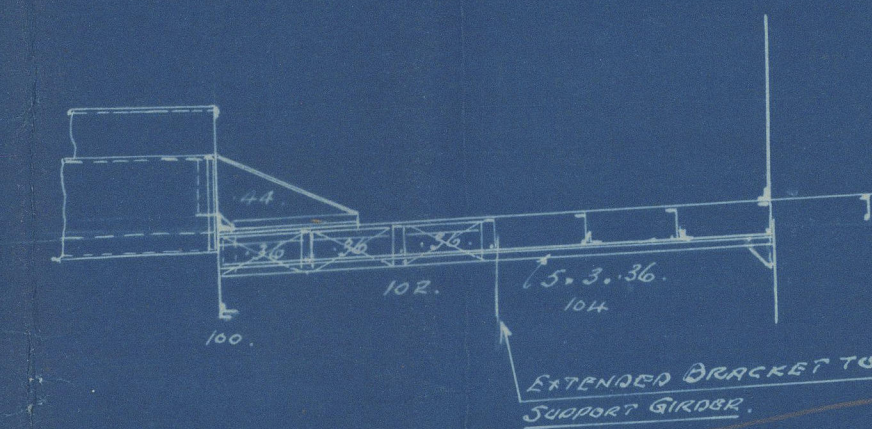
PROFILE IN WAY OF BREAK.



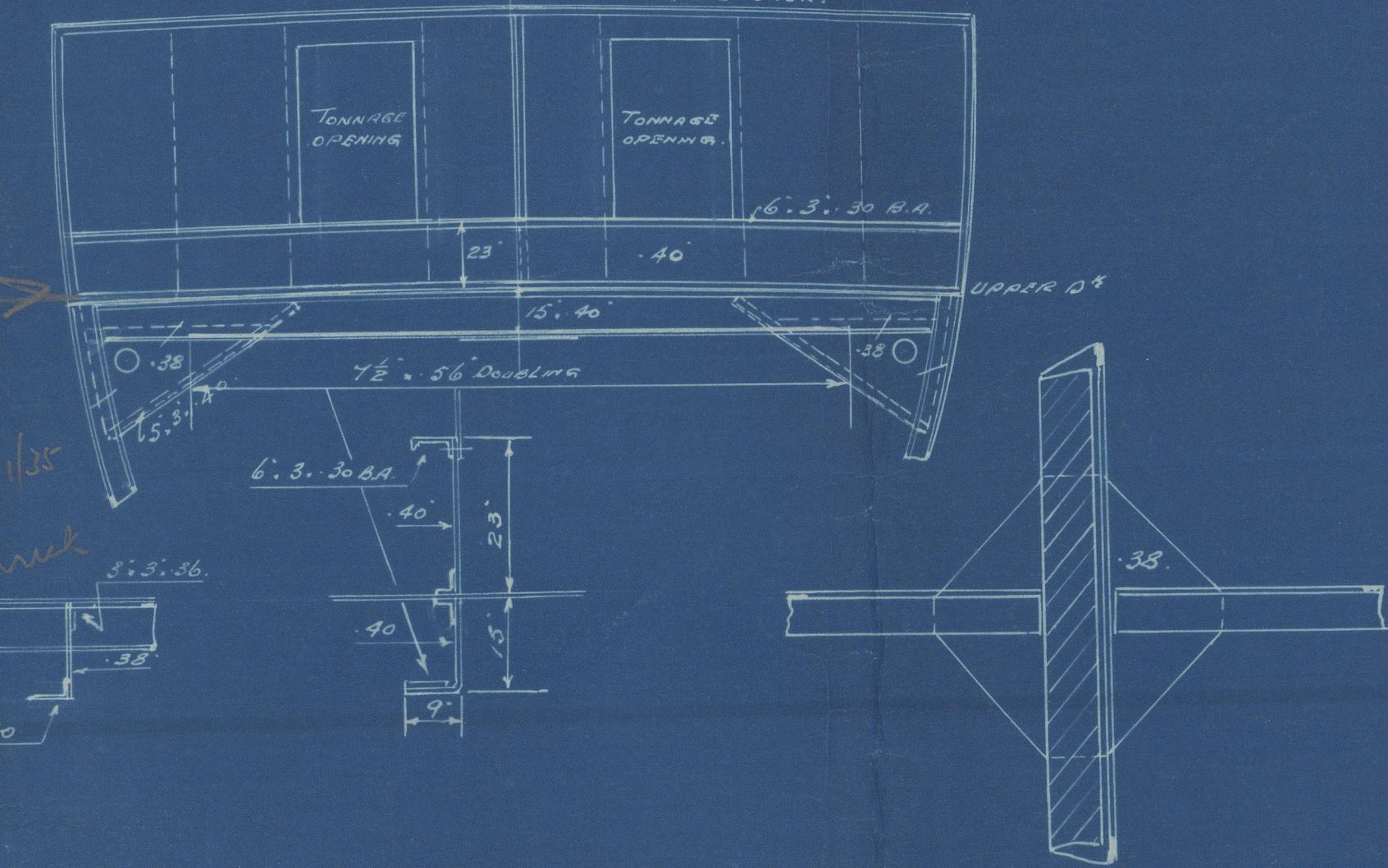
HATCH ENDS EXCEPTING
NO. 8 HATCH
SCALE 1/4" = 1 FOOT



BRIDGE 10.0' FROM CENTRE M.S.



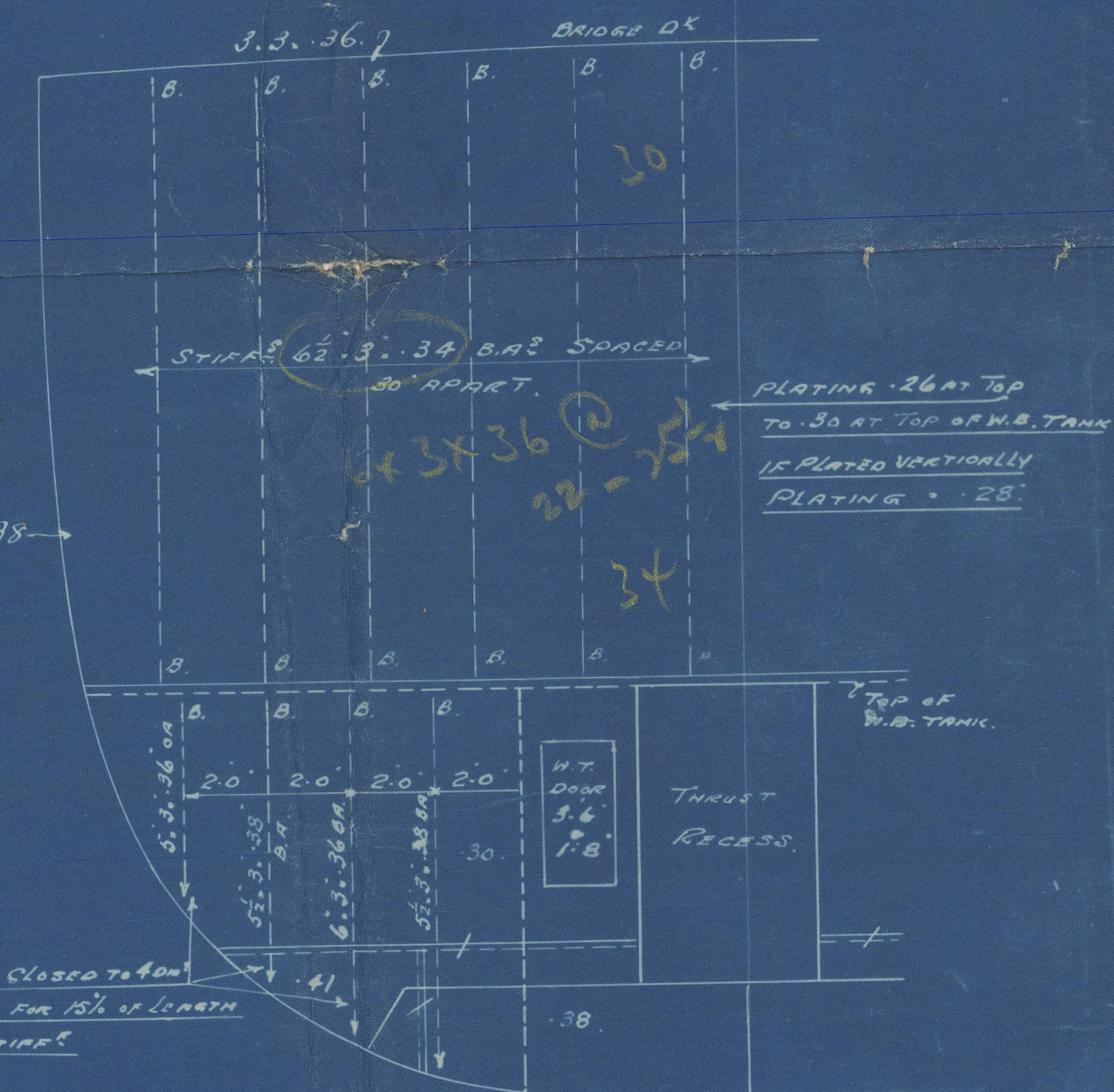
SECTION AT NO. 106 FT
LOOKING FORWARD
SCALE 1/4" = 1 FOOT



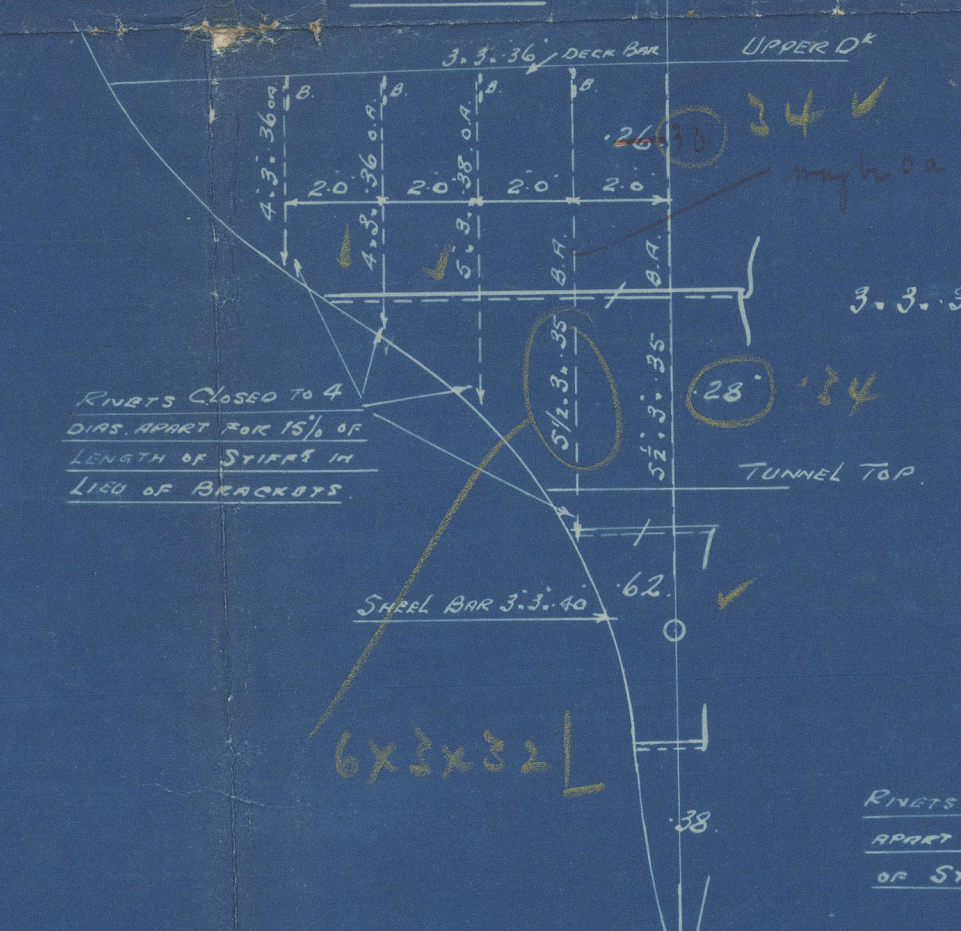
See London
letter dated 27/1/35
for details
under bridge

W.T. BULKHEADS SCALE 1/4" = 1 FOOT

W.T. BULKHEAD ON NO. 38 FRAME
LOOKING AFT



W.T. AFTER PEAK ON NO. 6 FRAME
LOOKING AFT

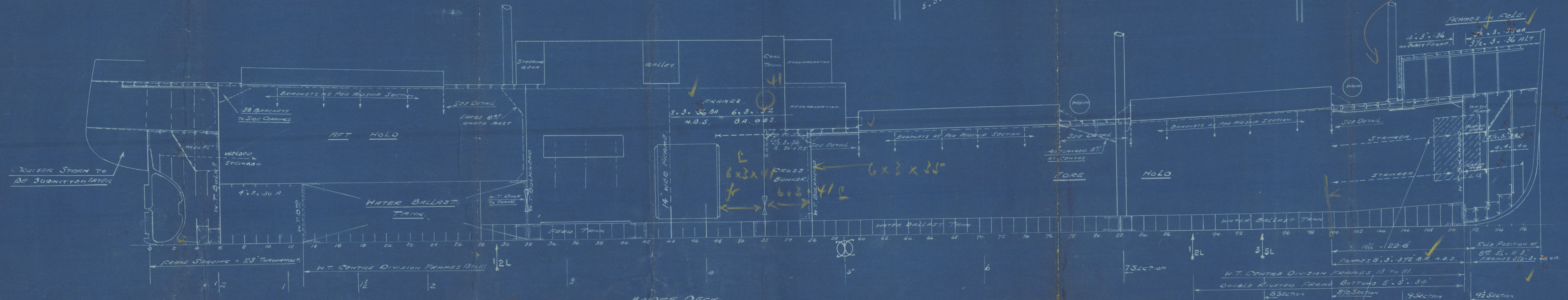
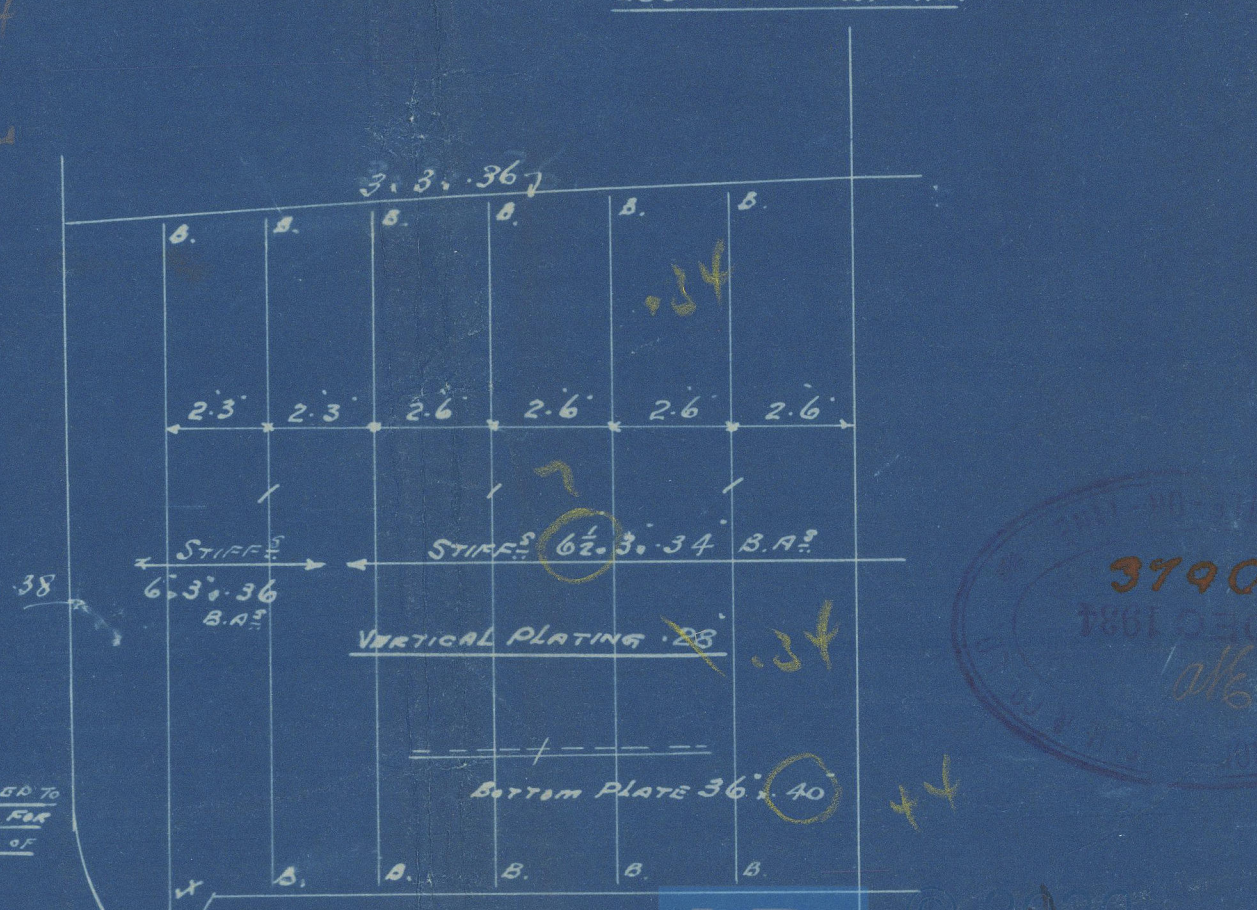


UPPER DECK

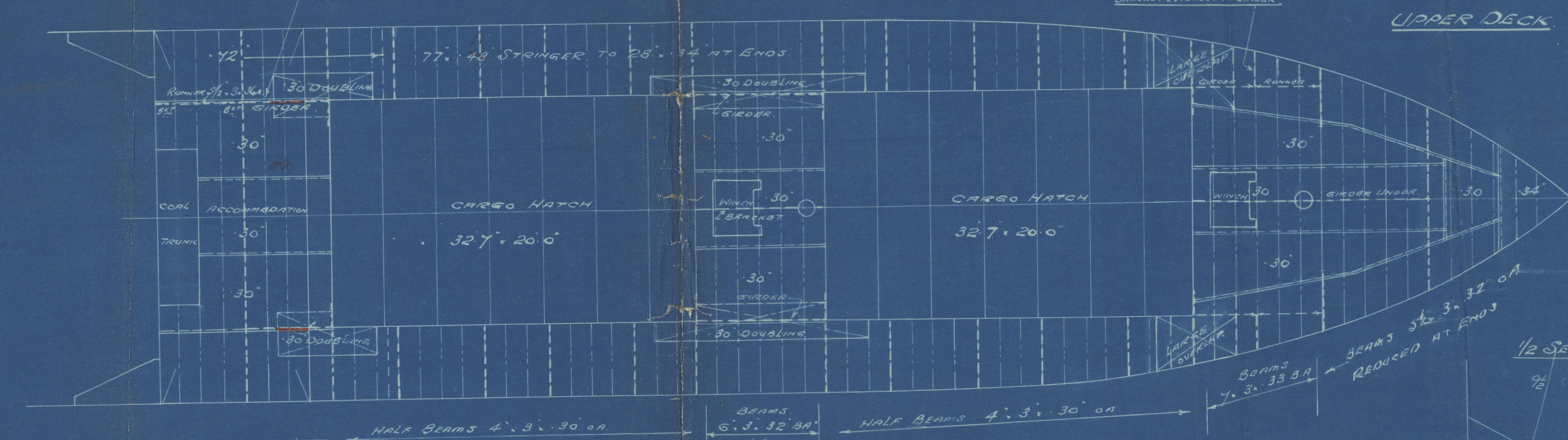
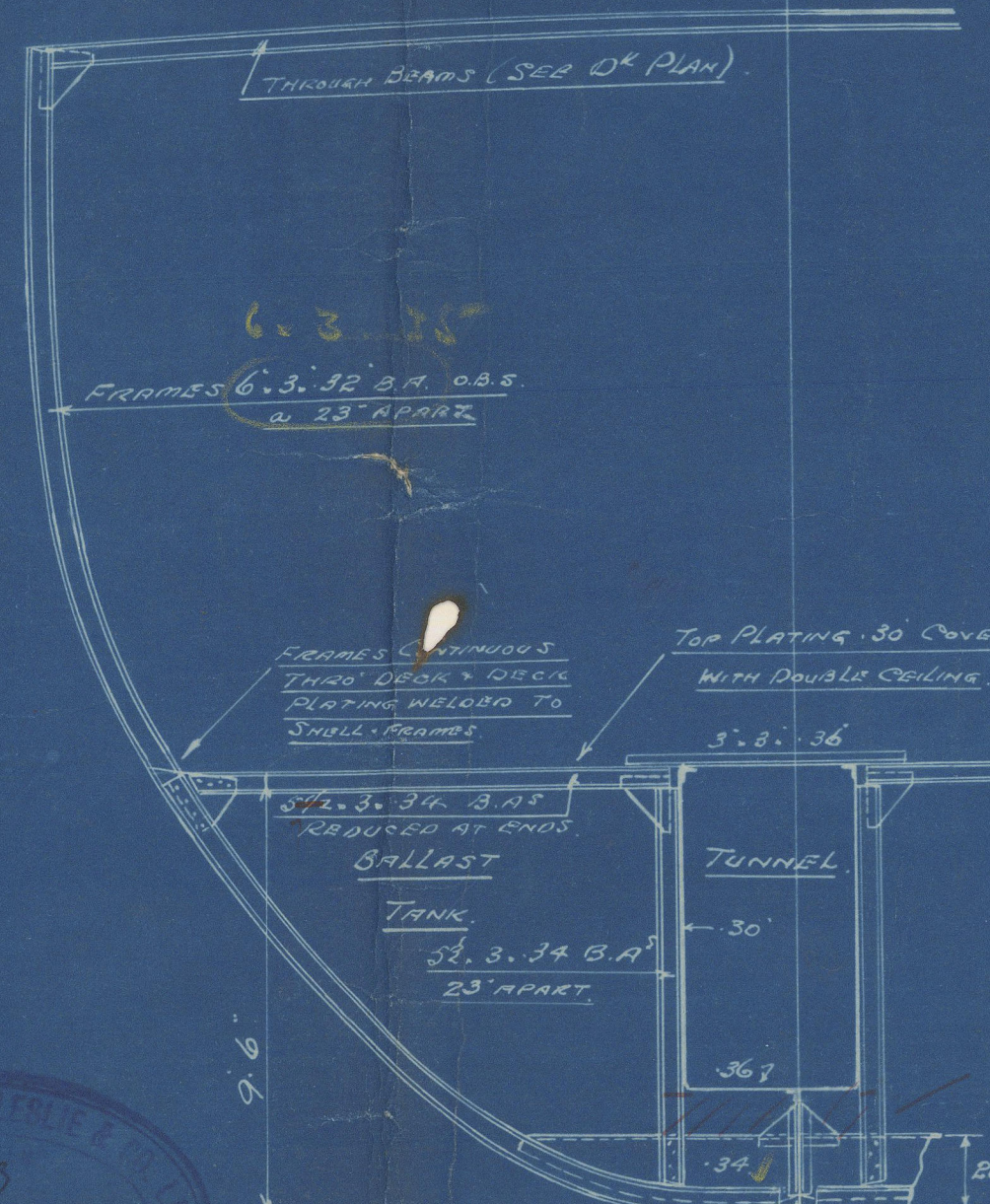
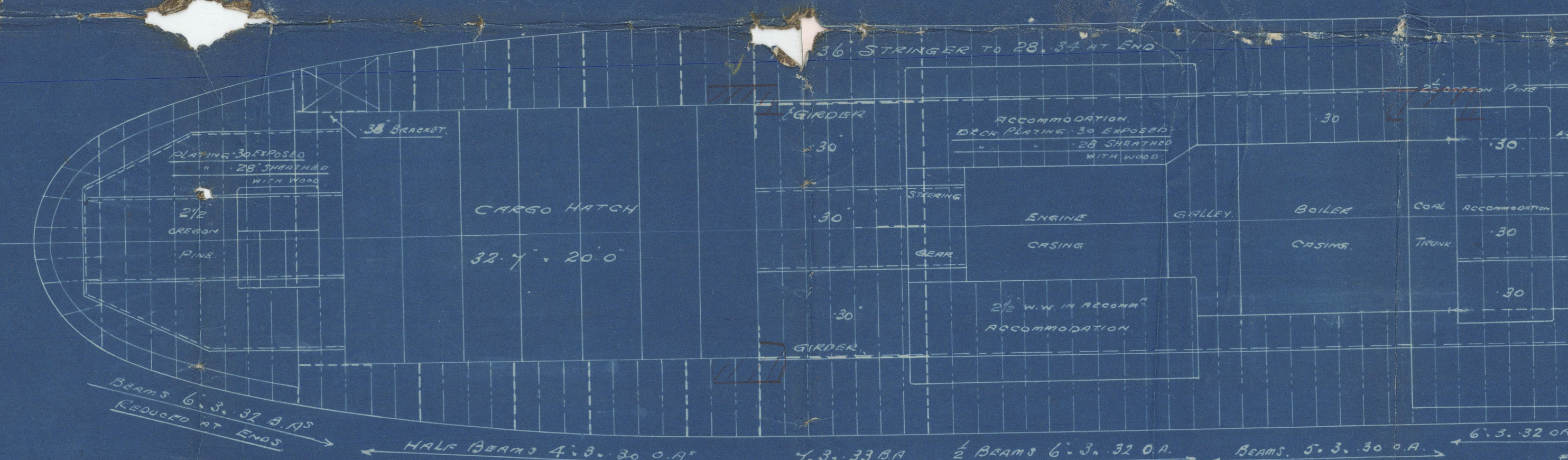
W.T. FORE PEAK ON NO. 111 FRAME
LOOKING FORWARD



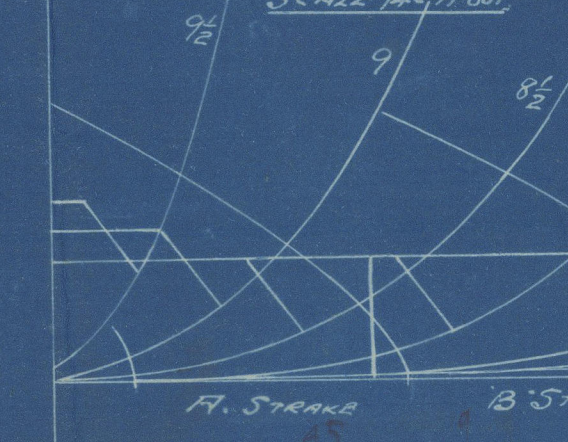
W.T. BULKHEAD NO. 56 (BUNKER BULKHEAD)
LOOKING FORWARD



BRIDGE DECK



1/2 SECTION FORWARD
SCALE 1/4" = 1 FOOT



3173
21 NOV 1934

LR

3790
21 NOV 1934

Profile & Decks.

596

Hawthorn Leslie

30/11/54

(1)

92619

by ⁱⁿ Northumbrian Court

SS "THORNABY"

NEWCASTLE ON TYNE.

Report No. 92619.



© 2020

003252-003262-0002

Lloyd's Register
Foundation

Ind
598.

Ind Full Hk 61-67 + 2h 673
shut out

achung fine Hk 19 - 663 h 64 - 68
Ind Hk under 622

—
—
—
cl

19 Hk

003252-003262-0002



© 2020

Lloyd's Register
Foundation