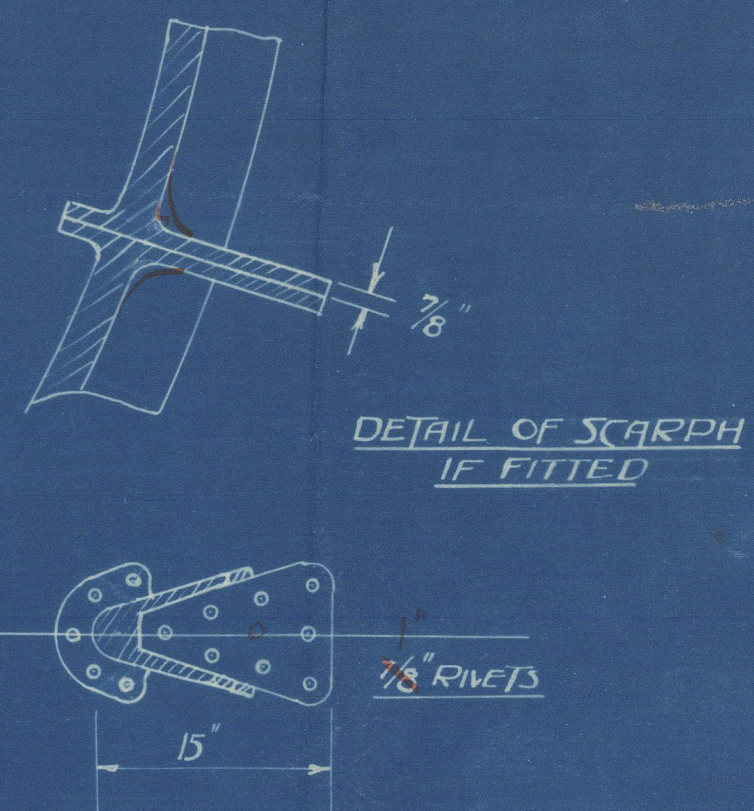
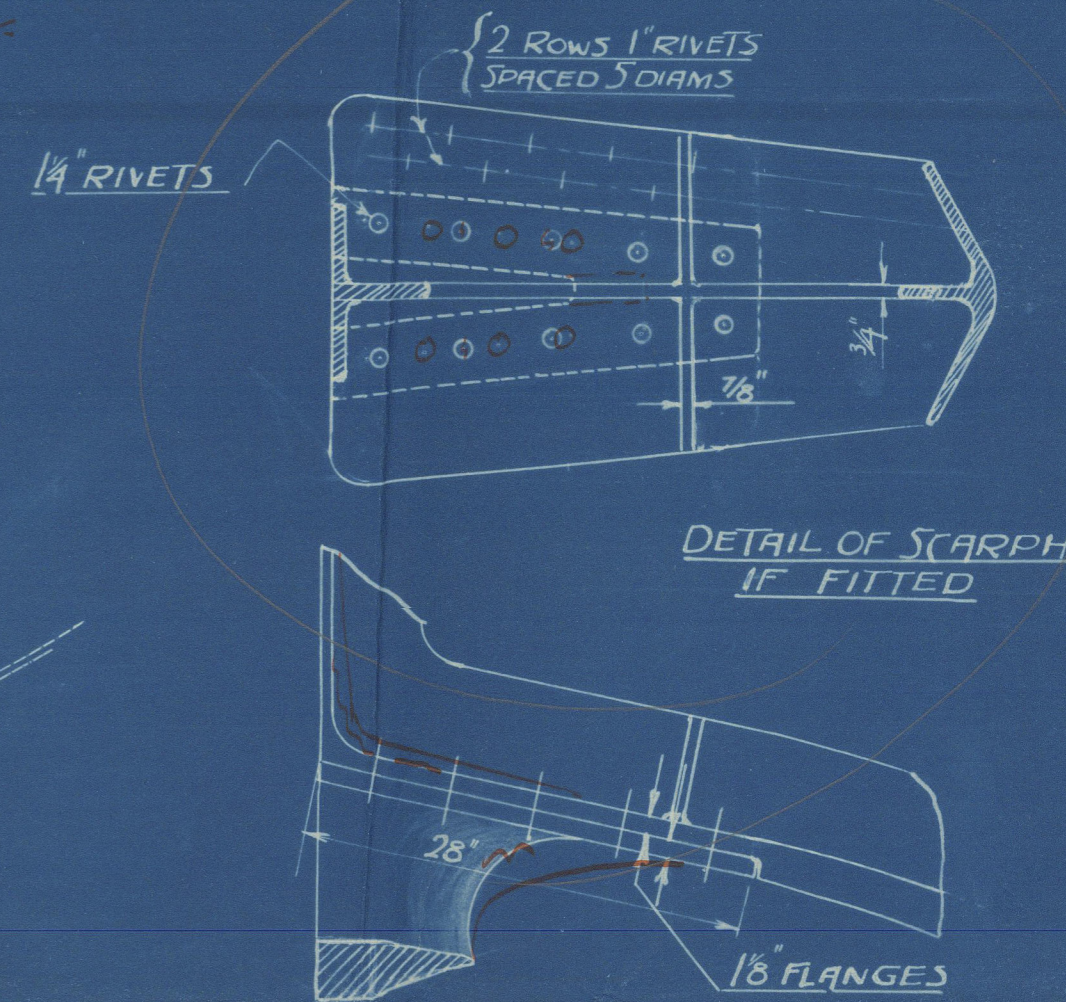
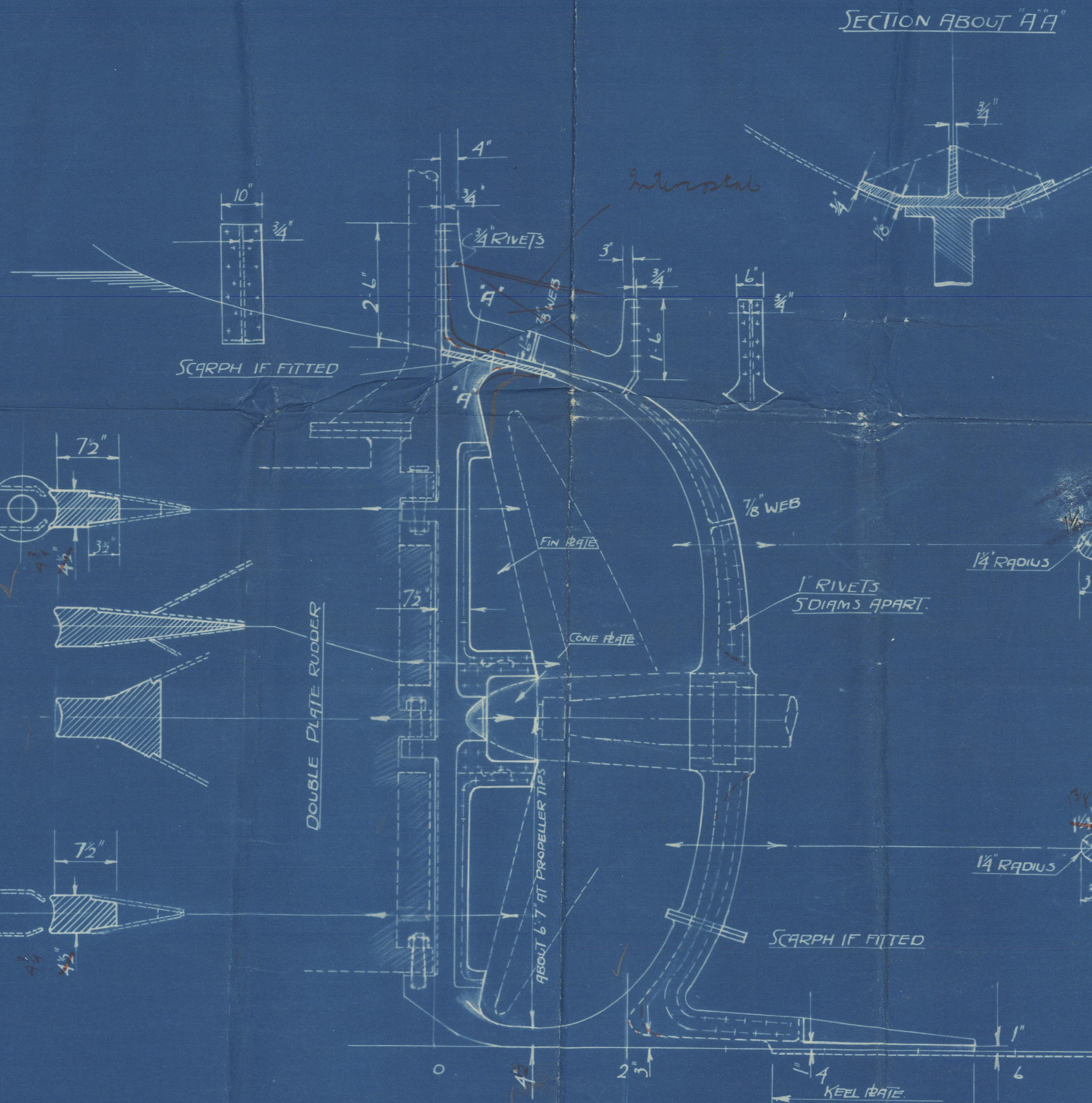
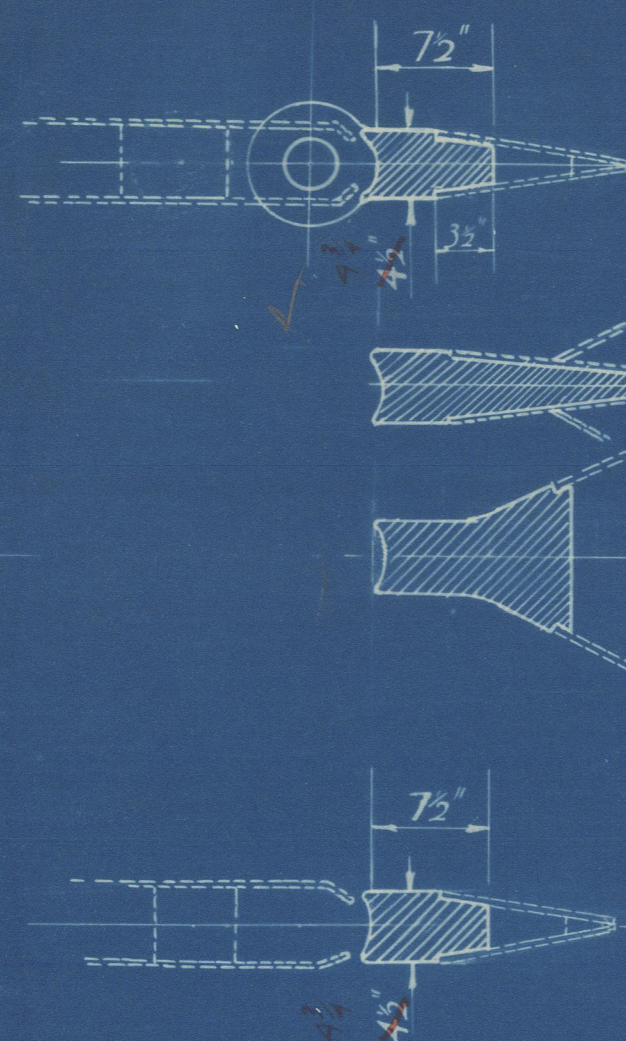
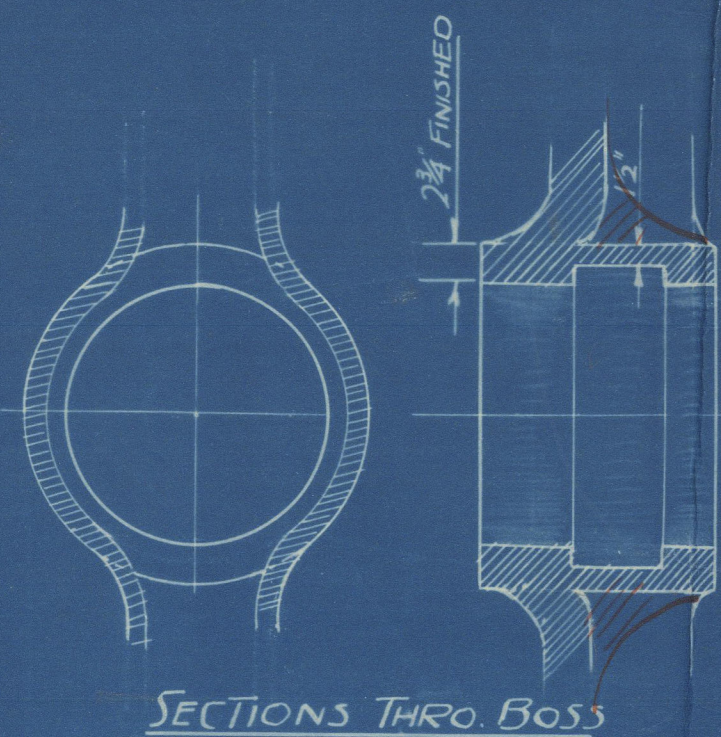


18/12/34

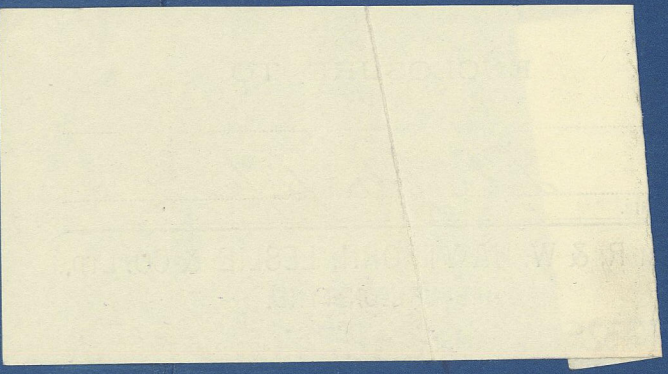
N^o 596 PROPOSED STERN FRAME CAST STEEL SCALES 1/2" x 1" - 1 FOOT.

DIMENSIONS: LBP 225'-0" 33' 0" BM. 16'-6" DM TO L.D.
 L.D. = 3712.
 TABULAR SIZE OF STERN POST 6 3/4" x 4 1/2" x 1/2"
 " " " RUDDER 6" x 4 1/2" x 1/2"
 SPEED 10 KNOTS IN SERVICE 5 1/2" x 4 1/2" on account of counter stem.
 ENGINES 16-26-44-30
 WORKING PRESSURE 200 LBS/SQ. IN.
 DESIGNED RPM 87
 DIAMETER OF PROPELLER 12'-0"



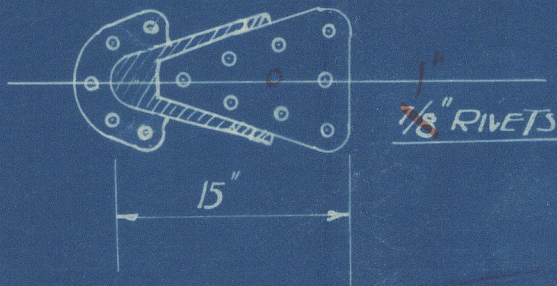
Various Scarpings of
 stern post slightly modified
 in places by Builders
 Builders take Scarph not to be fitted

370
 4/1/35.



3873
 Lloyd's Register
 Foundation

003252-003262-0001 2 1/2



ENCLOSURE TO

Lloyds N/c

40,0872.

FROM R. & W. HAWTHORN, LESLIE & CO. LTD.,
HEBBURN-ON-TYNE.

003252-003262-0001 1/2

003252-003262-0001 2/2

596

Stern Frame

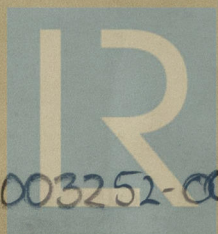
Howard How Leslie

4th Northumbrian Coast

SS "THORNABY"

NEWCASTLE ON TYNE.

Report No. 92619.



© 2020

Lloyd's Register
Foundation

003252-003262-0001

2/2