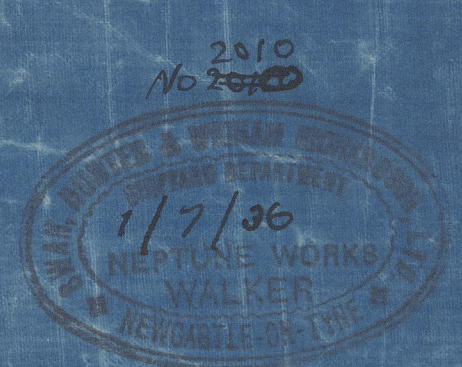
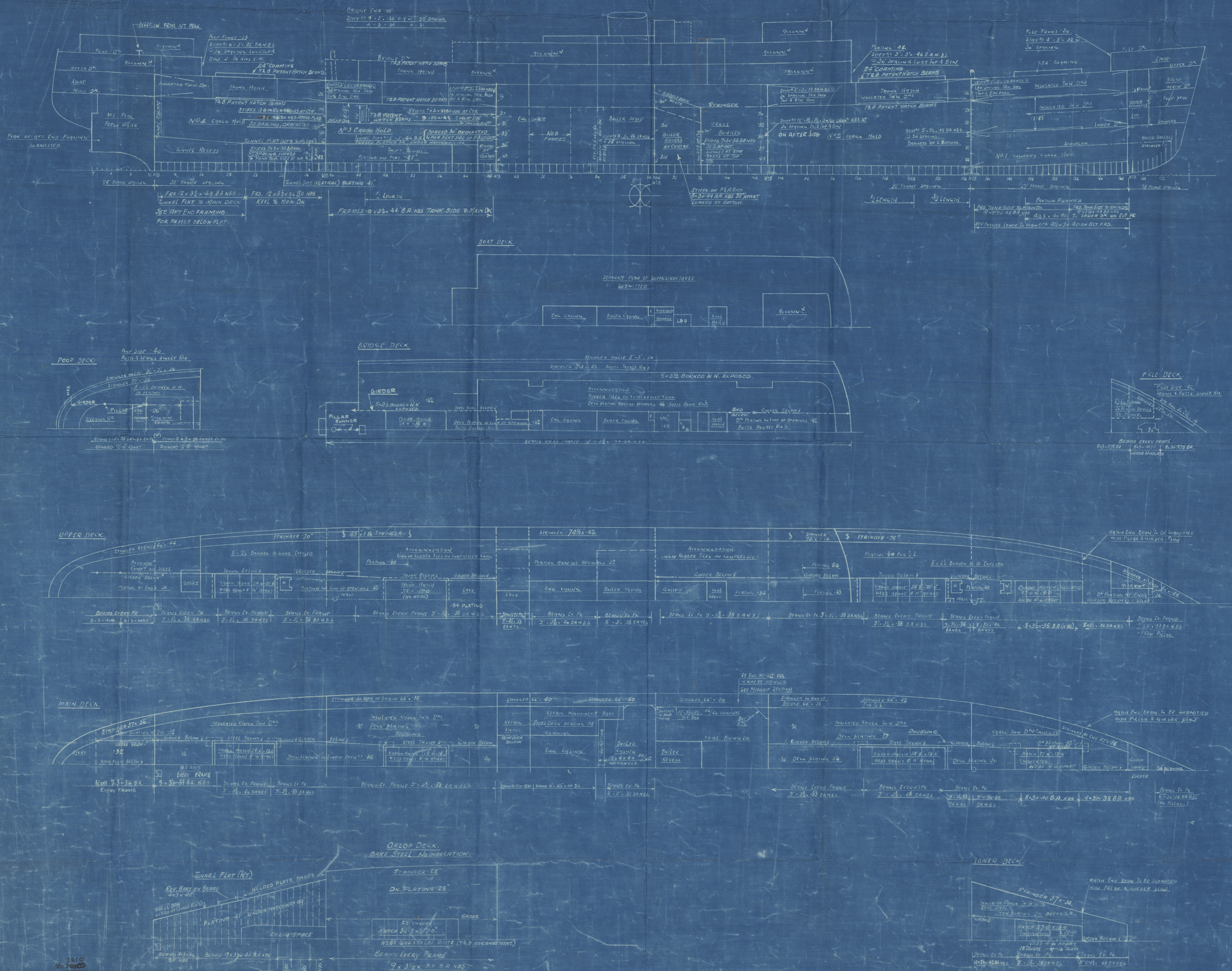


“UMTALI”

PROFILE & DECK PLANS.

DIMENSIONS: 445'-0" P.P. - 61'-0" B.M.P. - 35'-6" D.M.P. TO UPPER DECK.
TO CLASS LLOYDS *100 A.I. WITH FREEBOARD.
SCANTLINGS SUITABLE FOR A SUMMER DRAFT OF 25'-6" B.K.
SCALE: 1/16" = 1'-0".



100215-00231-0024

"UMTALI"

Susan Hunter No 1492

PROFILE + DECKS

AS. BUILT

CALABAR

T.S.S. "UMTALI"

NEWCASTLE ON TYNE.

Report No. 93942

RETAIN



© 2020

Lloyd's Register
Foundation

003245-003251-0024