

SHIP No 295.

• RUDDER & STERNFRAME •

SCALE 1" = 1 FOOT

DETAILS 3" = 1 FOOT.

1 1/2" LONG NUMBER L x D = 220 x 20 = 4400.

DISTANCE OF CG AFT C/LINE OF PINTLES = 2.82' D.

AREA OF RUDDER 67.14 SQ FT 'A'

A x D = ~~87.14 x 2.82~~ = 189.3 *but 6' read 192.*

SPEED 13 M.P.H. *Knots*

RUDDER HEAD	7" DIAM (NORMAL)
+ 10%	3/4" FOR ICE NAVIGATION.
+ 1/2	1/2" OWNER'S REQUIREMENTS.
	8 1/4" DIAM

STERN FRAME---FORGED IRON

RUDDER FRAME---FORGED IRON

1'-0"

D = 3'-5 1/2"

Area = 6' x 13.25' = 79.50

A x D = 79.5 x 3.46 = 275.

C 13 knots.

9"

D = 3'-25"

Area = 13.25 x 5.75 =

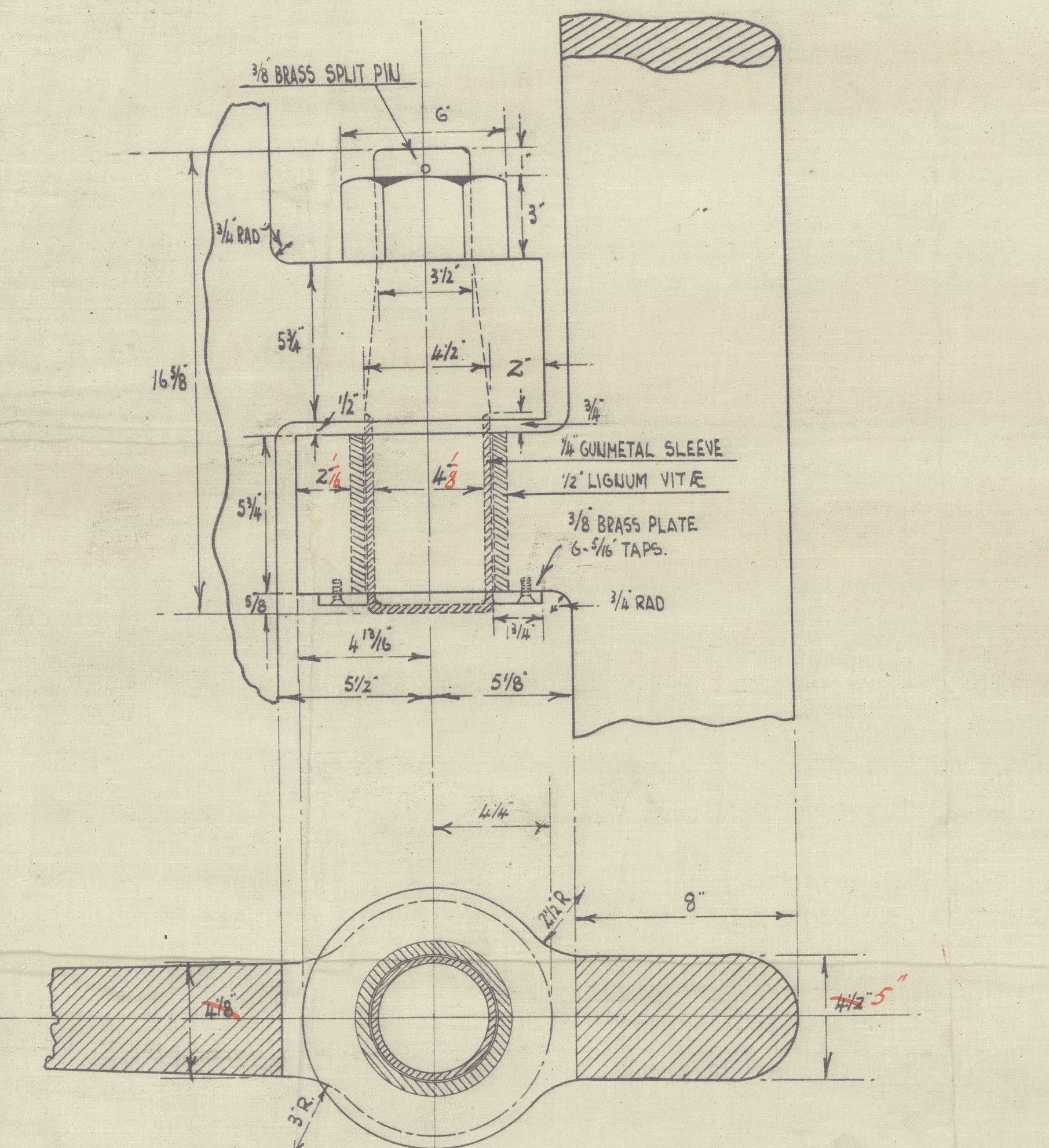
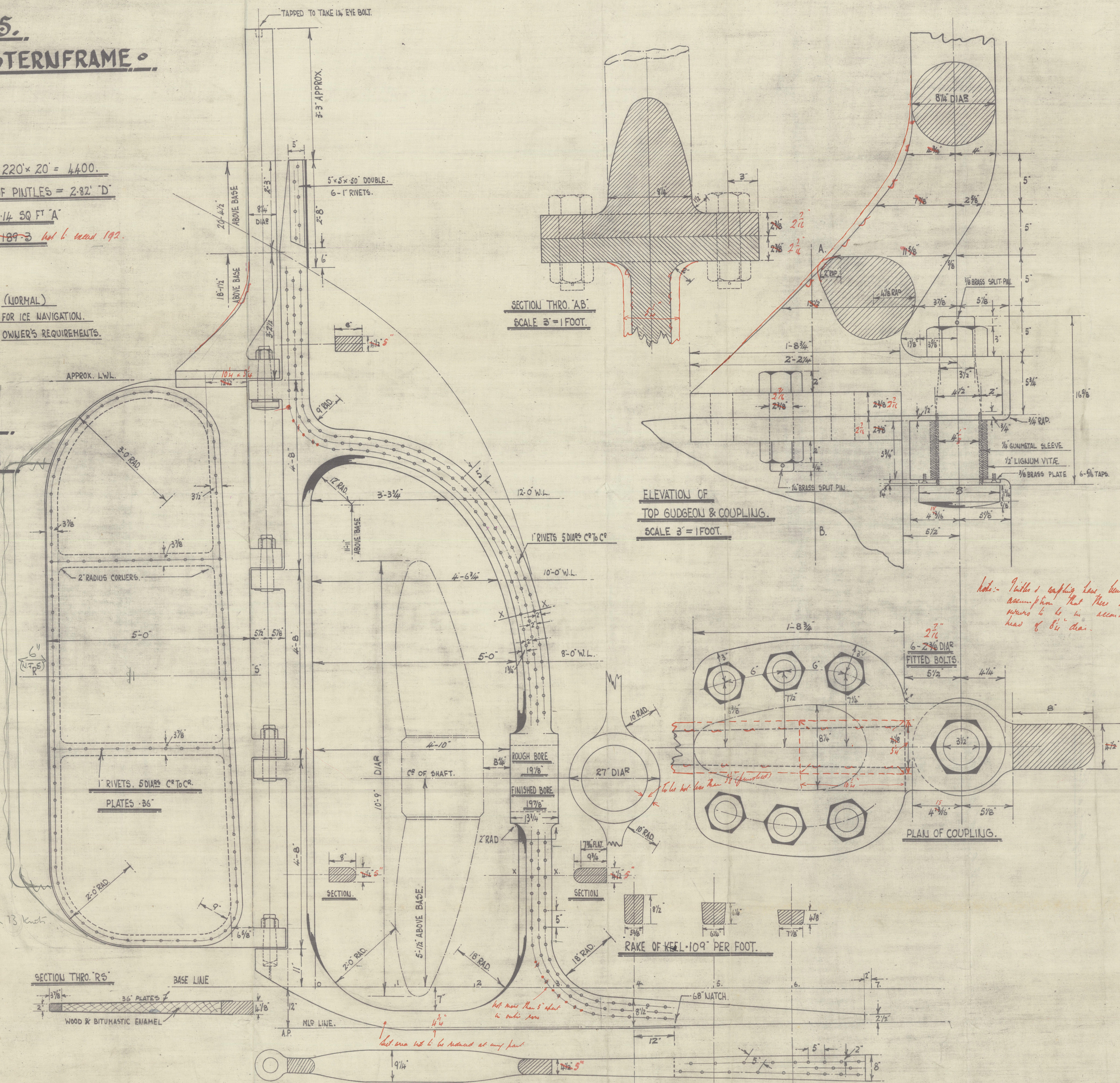
250 Sq.

9"

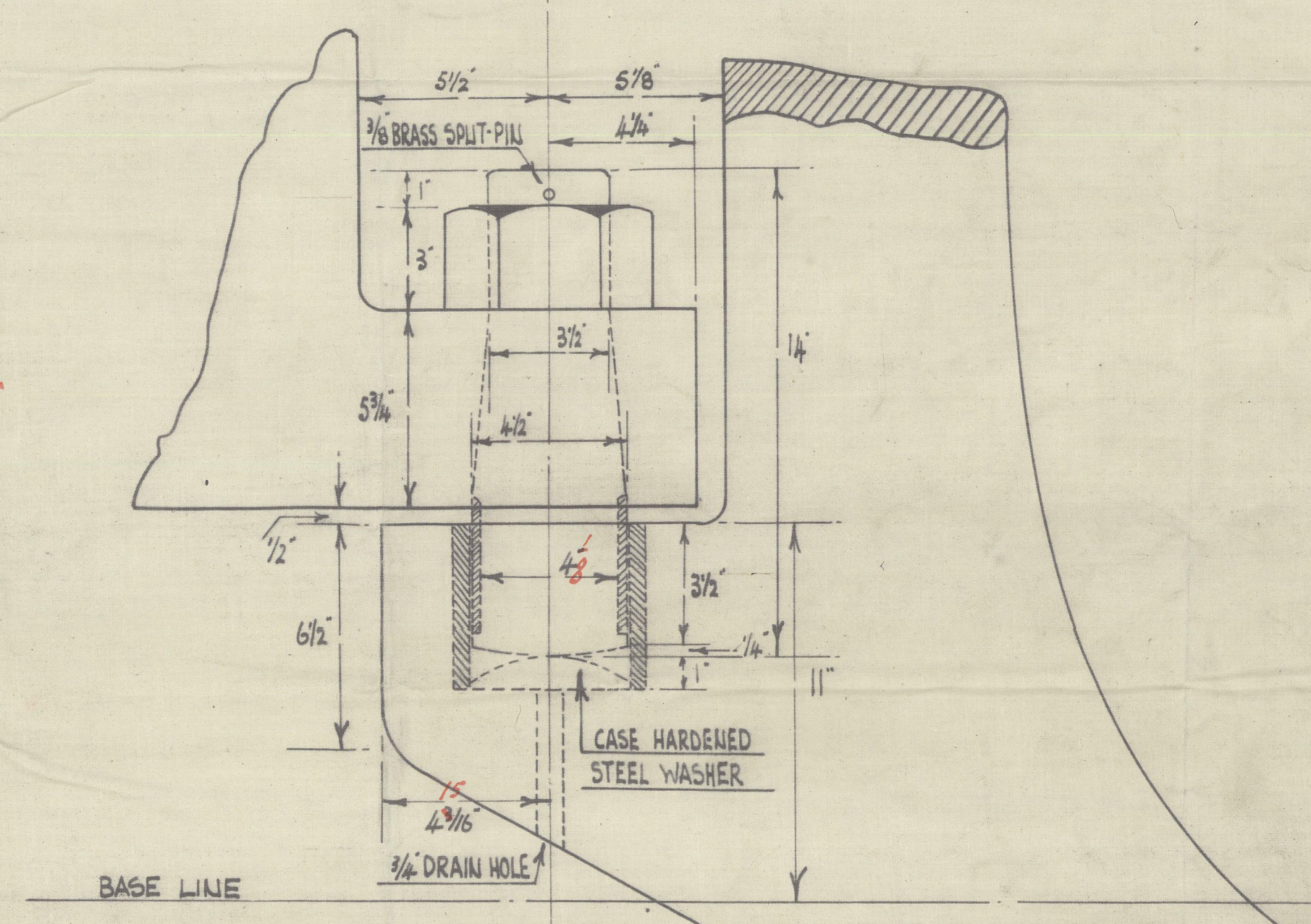
Center Area = 10 1/2 x 7.5 = 79.9

A x D = 75.04 x 3.25 = 244.88

*slightly high for 13 knots
arranged for 6" slip to be
fitted.*

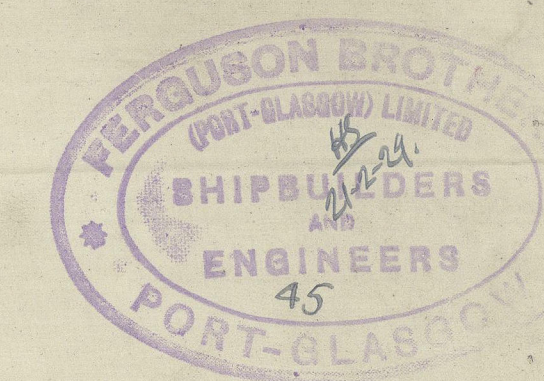


INTERMEDIATE GUDGEONS & PINTLES
SCALE 3" = 1 FOOT.



BOTTOM GUDGEON & PINTLE
SCALE 3" = 1 FOOT.

APPROVED
LLOYDS REGISTER OF SHIPPING
[Signature]
DATE 5.3.19



FERGUSON BROS.
(PORT-GLASGOW) LTD
SHIPBUILDERS & ENGINEERS

SHIP No 295.
PLAN No T.
20-2-29.

Lerguson Bros.

S. S. "DISCOVERY II."

N. 295.

Sternpost & Rudder.

Gr. R. Rep. N. 19127.



© 2020

Lloyd's Register
Foundation

003223-003232-0172