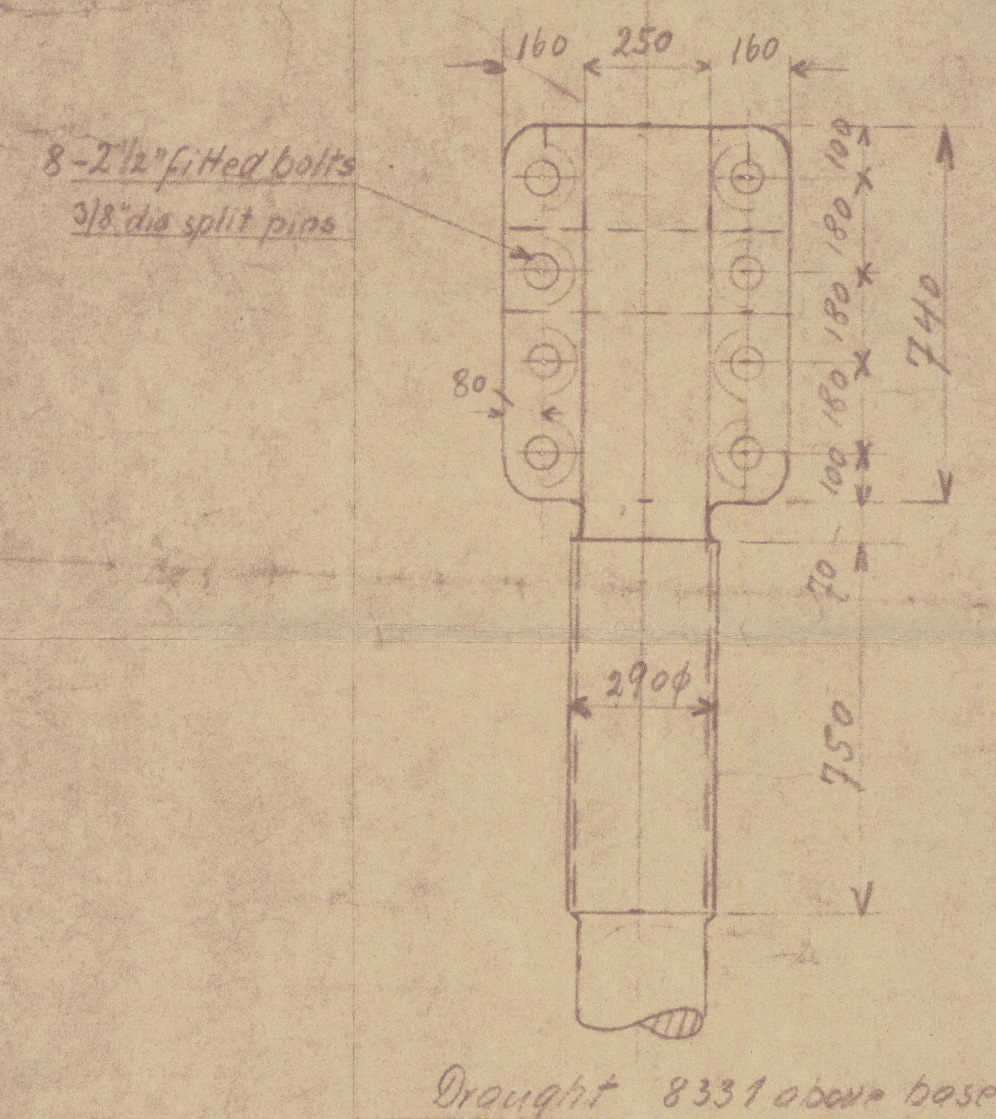


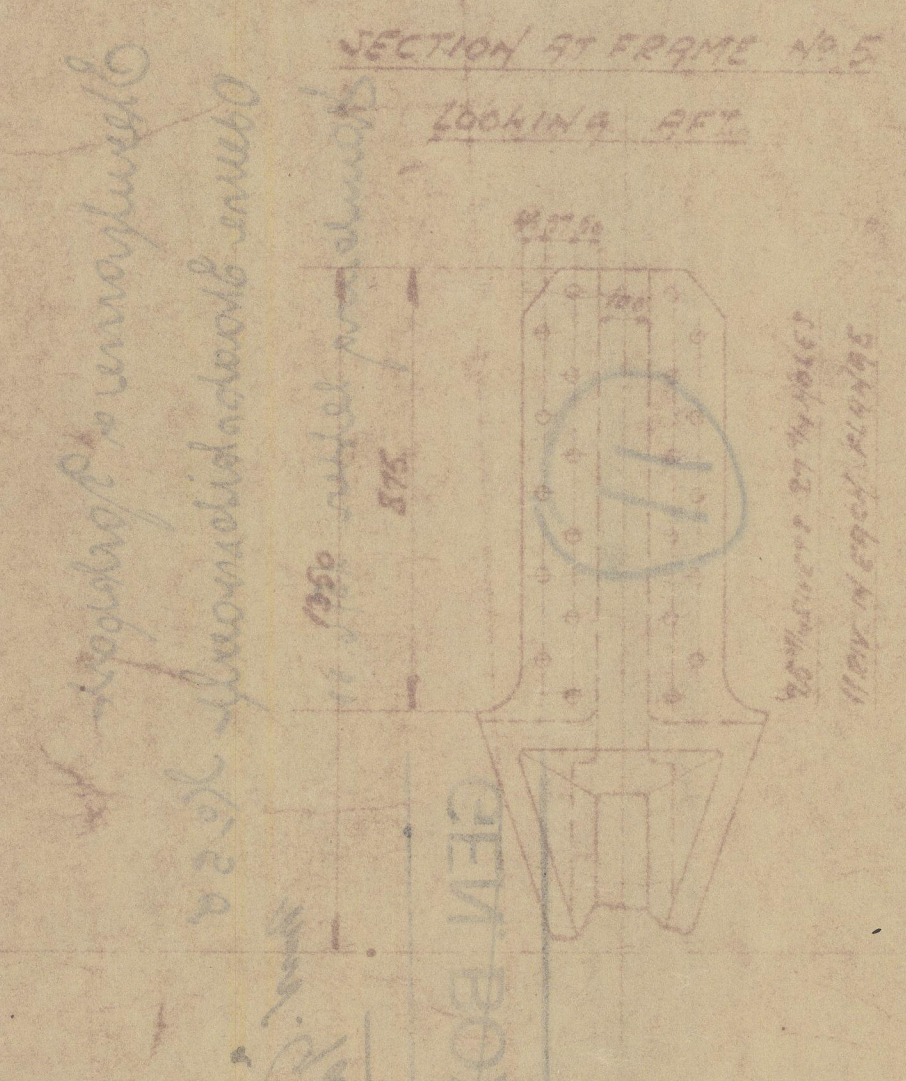
YARD N° 50. STERNFRAME. SCALE: 1:15.

MATERIAL: CAST STEEL.
BRITISH LLOYD'S TEST. CERTIFICATE TO BE DELIVERED.

Upper coupling
between sternframe & backpost
looking forward



Beam is to be angled.
to suit to be connected with Rudder stem



Sumerals:

Length	= 470'0" = 143,853 m
Breadth	= 61'0" = 18,592
Depth	= 42'11" = 13,080
Draught	= 27'4" = 8,331
Speed	= 16 Knots
Rudder area	= 180 sq ft = 16,72 m²
L x D	= 20771
A x D (100 x 4395)	= 254 276
Rudder-angle max.	= 35°

6500

Rudder by
special drawing!

Total length of backpost = 7815 mm

4930

Materials: With test of Lloyd's register of shipping.

Sternframe	= Cast-steel.
backpost	= Mild-Ingot steel
Rudderhead	= Forged-iron
Rudder	= Mild-steel
Rudder-bearings	= Cast-steel.

SW 1150	SW 1150
AN 4084	AN 4084
JAR 3233	JAR 3233
SW 1150	SW 1150
AN 4084	AN 4084
JAR 3233	JAR 3233
SW 1150	SW 1150
AN 4084	AN 4084
JAR 3233	JAR 3233

Sternframe and backpost

19. 6. 33

Steufhane & Packpost

Odense Staatskibsværft No. 58

Hamburg letter 15/6.33

Mr. Taronga

72

GEN. BOX NO ~~1215~~

11



© 2020

Lloyd's Register
Foundation

003217-003222-0120