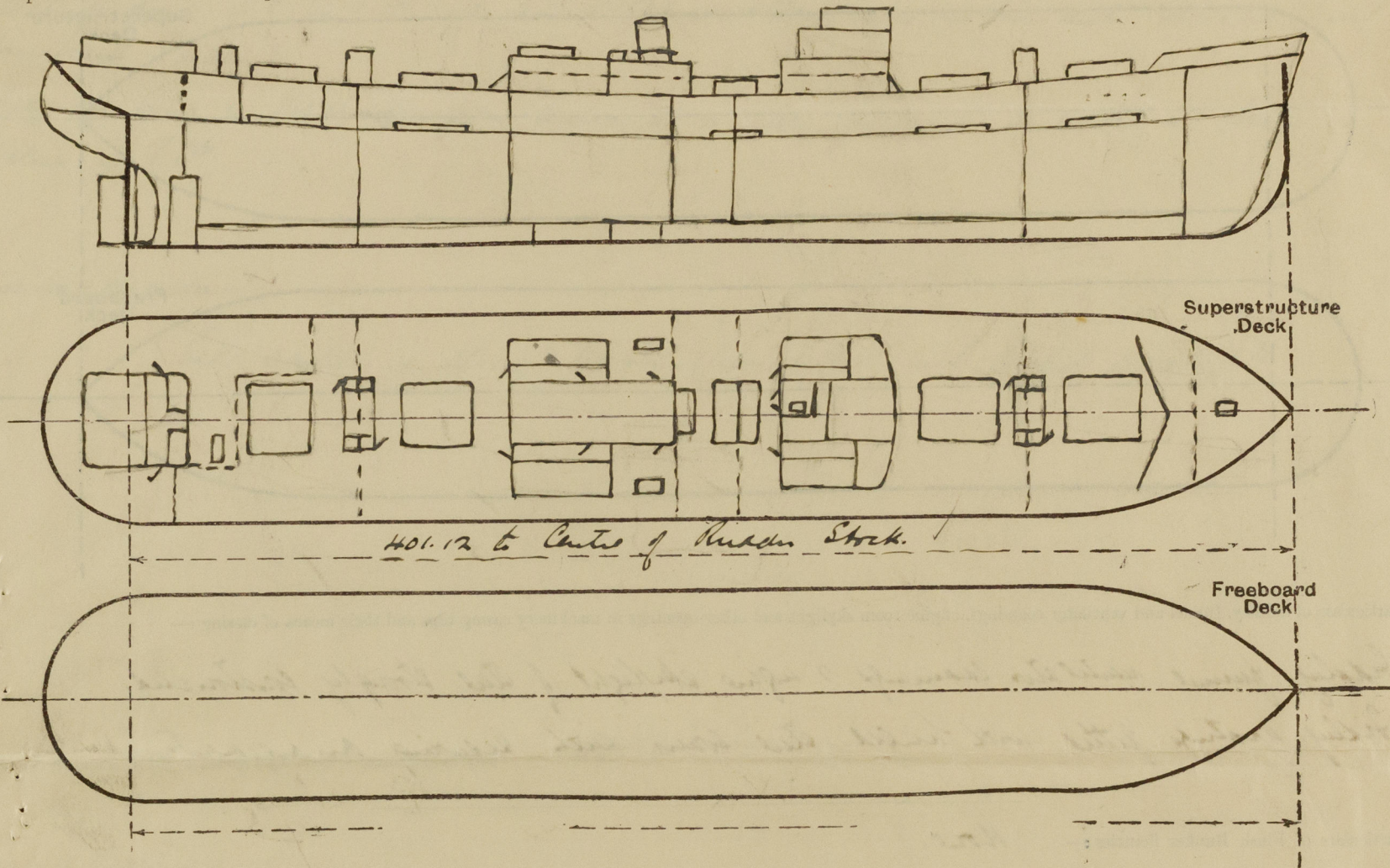


Lloyd's Register of Shipping.  
SURVEYS FOR FREEBOARD.  
(CONDITIONS OF ASSIGNMENT.)

Ship's Name	<i>EX <sup>VAN HONTHORST</sup> EMPIRE FORTUNE.</i>	Port of Survey	<i>Newcastle-on-Tyne.</i>
Official Number	<i>169049</i>	Surveyor's Signature	<i>A. A. Mori.</i>
Nationality and Port of Registry	<i>British South Shields.</i> <i>now Netherlands</i>	Date of Survey	<i>During construction.</i>

Disposition and dimensions of superstructures, trunks, deckhouses and machinery casings to be inserted in the diagrams and tabular statement:—



3 plans.

ENCLOSURE

Particulars of Superstructures, Trunks, Casings, Deckhouses.								
	Coaming	Plating	Stiffeners	Spacing	End Attachments of Stiffeners	Size of Openings	Height of Sills	Height of Casings
Poop Bulkhead ... ..	-	-	-	-	-	-	-	-
Raised Quarter Deck Bulkhead ...	-	-	-	-	-	-	-	-
Bridge, After Bulkhead ... ..	-	-	-	-	-	-	-	-
Bridge, Forward Bulkhead ... ..	-	-	-	-	-	-	-	-
Forecastle Bulkhead ... ..	-	-	-	-	-	-	-	-
Trunk, Aft ... ..	-	-	-	-	-	-	-	-
Trunk, Forward ... ..	-	-	-	-	-	-	-	-
Exposed Machinery Casings on Freeboard or Raised Quarter Decks ...	.34	.32	5.3 x 3/4 L	33"	✓	20'4"3 x 2'0"	24"	7'6"
Exposed Machinery Casings on Superstructure Decks ... ..	-	-	-	-	-	-	-	-
Machinery Casings within Superstructures not fitted with Class I Closing Appliances ... ..	-	-	-	-	-	-	-	-
Salon.	.28	.28	4.3 x 3/4 L	3 4'-2"	Black T.B.	1-4'6" x 3'	24"	7'6"
Deckhouses on Flush Deck Ships ...	.25	.25	4.3 x 3/4 L	3'-0"	-	2-4'6" x 2'	24"	7'6"

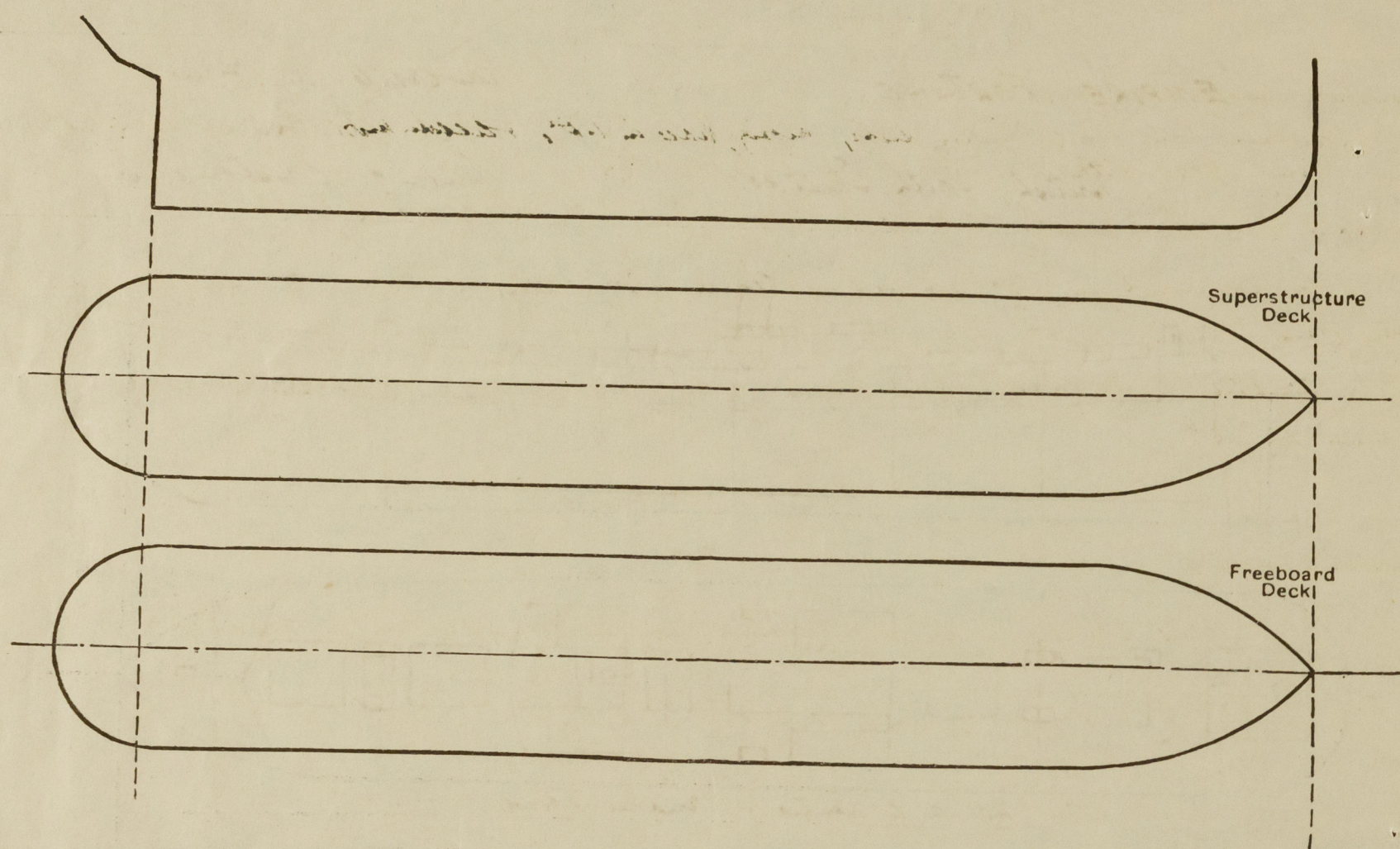
Particulars of Closing Appliances (state if capable of being manipulated from both sides).

Poop Bulkhead ... ..	-
Raised Quarter Deck Bulkhead ...	-
Bridge, After Bulkhead ... ..	-
Bridge, Forward Bulkhead ... ..	-
Forecastle Bulkhead ... ..	-
Exposed Machinery Casings on Freeboard or Raised Quarter Decks ...	Single steel door operated from both sides
Exposed Machinery Casings on Superstructure Decks ... ..	-
Machinery Casings within Superstructures not fitted with Class I Closing Appliances ... ..	-
Deckhouses on Flush Deck Ships ...	2" steel door in steel door operated from both sides.



# PARTICULARS OF PROTECTION TO OPENINGS, ETC.

The following diagrams should be used to indicate the positions of cargo and coaling hatchways, gangway, cargo and coaling ports, ventilators, companionways, etc., which would affect the seaworthiness of the ship:—



Particulars of fiddle, funnel and ventilator coamings, engine room skylight and other openings in machinery casing tops and their means of closing:—

*Fiddle, funnel, ventilator coamings & engine skylight of steel strongly constructed. Fiddle gratings fitted with hinged steel covers with securing arrangements.*

Particulars of Flush Bunker Scuttles:—

*None.*

Particulars of Companionways:—

*One to each side of 2nd deck with 2" thick wood dom. Lids 24" diameter both sides. One to each side in steel deck house, 2" thick wood dom. operate both sides. Lids 24" diameter to each side in steel deck house for cargo. Through 2nd deck operate both sides. Lids 24" diameter. Funnel scaps off and engine casing. W.T. door operate both sides. Lids 24" diameter to each side. One to each side of 2nd deck with 2" thick wood dom. Lids 24" diameter both sides. Lids 24" diameter. One to each side of 2nd deck with 2" thick wood dom. Lids 24" diameter both sides. Lids 24" diameter.*

Particulars of Ventilators in exposed positions on freeboard and superstructure decks:—

*Freeboard Deck.*

*All vent coamings forward 36" in height. Vent coamings aft 33" in height. Scaps 2-17" dia 16" in height 11-8" dia 5-0 high which are efficiently stayed.*

*17" dia vent coaming 38" 12" " " 34 9" " " 32 8" " " 30 6" " " 30*

*Scaps down mushroom vents 6" in height*

Particulars of Air Pipes in exposed positions on freeboard, raised quarter, or superstructure decks:—

*All air pipes on Freeboard deck 33" in height.*

*Closed by wood plugs or Canvas covers.*

*Chasing Tube*

*12" dia - 16" x 34*

*Companion Tube*

*12" dia - 18" x 32*

*Wash House Tube*

*27" dia - 21" x 30*

*Coal & Gorse rack vents closed by wood plugs & Canvas covers.*

EMPIRE FORTUNE

Particulars of Gangway Cargo and Coaling Ports:—

*None.*

Particulars of Scuppers and Sanitary Discharge Pipes:—

*All scuppers from cargo tween decks, leading to T.O. & accommodation aft led to bulwark. Self closing cocks fitted to those in way of engine space. Scuppers from steering gear flat led to engine room with rotary pump for clearing. Discharge from W.T. in T.O. aft led to geared storm valve in tween deck operated from foreboard deck. All scuppers & discharges from shafts on or above foreboard deck led to storm valve in T.O.*

Particulars of Side Scuttles:—

*Side scuttles of strong construction fitted with hinged draught*

Vertical distance of Sill of lowest Side Scuttle above top of keel

*35'6"*

Particulars of Guard Rails:—

*3'6" in height - 3 rods - Stanchions spaced about 4'6" apart.*

*Steel bulwarks in way of midship accommodation & fore end.*

Particulars of Gangways, Lifelines, etc.:—

*22" P.S. rope fitted forward edge of midship houses. Hand rails fitted in way of deck houses.*

## Particulars of Freeing Arrangements.

	Length of Bulwark	Height of Bulwark	Size of Freeing Ports	Number each side	Area each side	Rule area each side
After Well ...						
Forward Well ...						

State position of each freeing port ... (F. and A. position and height above deck edge)

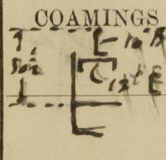
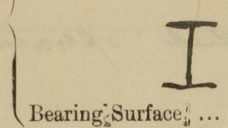
State whether the freeing ports are fitted with shutters, bars, or rails, and give particulars of such:—

Additional area where sheer is less than standard.



PARTICULARS OF PROTECTION TO OPENINGS, ETC.

*Submerged deck - to casing 1/2"*

HATCHWAYS ON FREEBOARD AND SUPERSTRUCTURE DECKS.										
Description of Hatchway	NO. 1.	NO. 2.	NO. 2A.	NO. 3.	NO. 5.	For port	Side Bunkers.	Staircase deck house	Fore deck	
Dimensions of Hatchway	24'3" x 22'	30' x 22'	5' x 22'	12'6" x 22'	27'6" x 22'	4' x 3'	10' x 4'	3' x 3'	6' x 22'	
COAMINGS 	Height above Deck	3 1/2	3 1/2	3 1/2	3 1/2	3 1/2	3 1/2	2'	9'	
	Thickness	50	50	50	50	50	50	50	50	
	Stiffeners	Per sketch	Per sketch	Per sketch	Per sketch	Per sketch	Per sketch	Per sketch	Per sketch	
	Brackets, Stays	2	2	-	1	2	-	-	-	
HATCH BEAMS 	Number	4	4	-	1	3	-	-	-	
	Spacing	5'10"	6'0"	-	6'3"	4'1"	-	-	-	
	Scantling and Sketch	22 x 38	20 x 38	✓	22 x 38	22 x 38	✓	✓	✓	
	Bearing Surface	3	3	-	3	3	-	-	-	
FORE AND AFTERS	Number	-	-	-	-	-	-	-	-	
	Spacing	-	-	-	-	-	-	-	-	
	Unsupported Lengths	-	-	-	-	-	-	-	-	
	Scantling* and Sketch	-	-	-	-	-	-	-	-	
HATCH COVERS	Material	OP.	OP.	OP.	OP.	OP.	OP.	OP.	OP.	
	Thickness	2 3/8	2 3/8	2 3/8	2 3/8	3'	2 3/8	2 3/8	2 3/8	
	How fitted	77A.	77A.	77A.	77A.	77A.	P.S.S.	P.S.S.	P.S.S.	
	Bearing Surface	3	3	3	3	3	2 1/2	2 1/2	2 1/2	
Spacing of Cleats	24'	24'	24'	24"	24"	24"	24"	24"	24"	
Number of Tarpaulins	2	2	2	2	2	2	2	2	2	
<p>*Are wood fore and afters steel shod at all bearing surfaces? ✓</p> <p>Are battens and wedges efficient and in good condition? ✓</p> <p>Are tarpaulins in good condition and in accordance with rule requirements? ✓</p> <p>Are lashings provided in accordance with rule requirements? ✓</p>										

Particulars of any special features:—

*The Scantling of this frame have been approved for a draught of 18' in view of that which could be assigned to a C.S. vessel with 1000 lbs. of weight.*

*Plans of midship section, profile sketch. Stem frame provided for reference.*

Endorsement at first survey and at surveys for renewal of Certificate:—

The fittings and appliances are in accordance with the particulars shown on this form (or as now modified) and are in good condition.



© 2020

Lloyd's Register  
Foundation