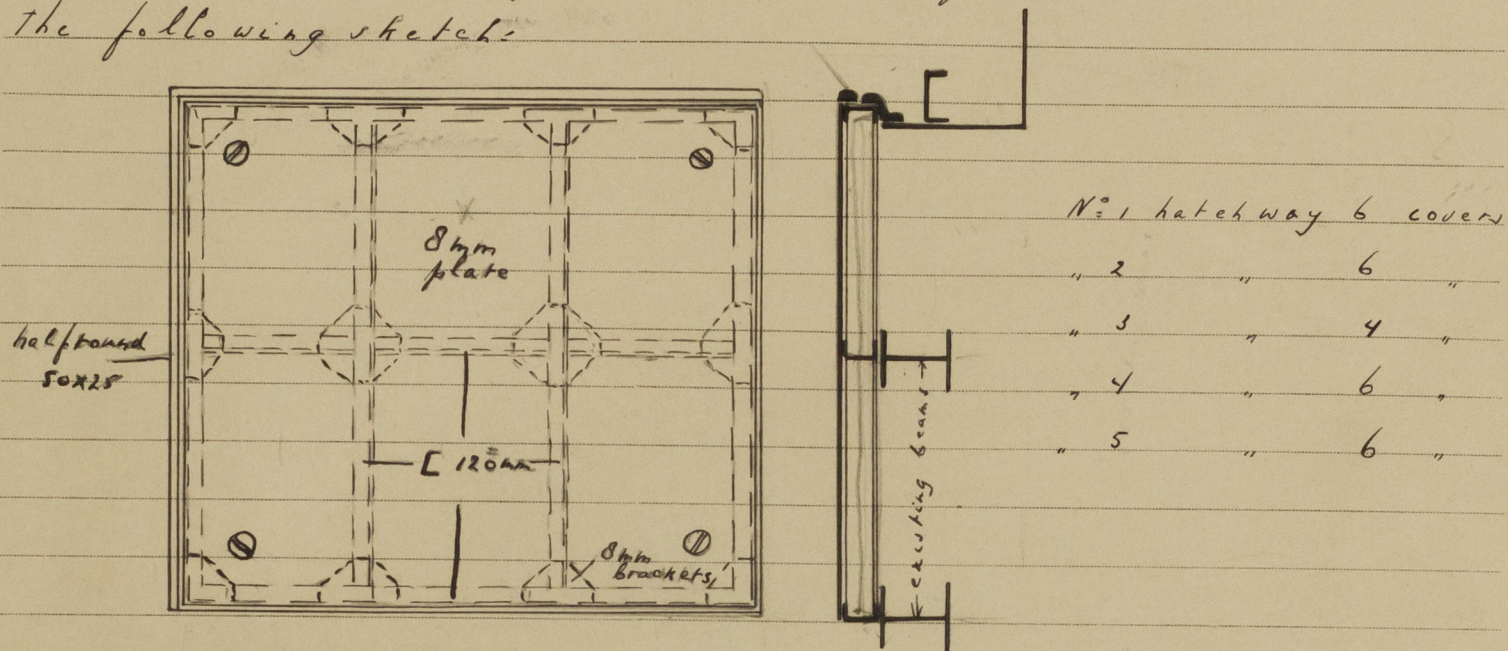


Stad Schiedam.

Memorandum of alterations reported since ship was surveyed for assignment of Load Lines in Newcastle on Tyne during construction.

ALL wood hatch covers of the upper deck cargo hatchways have been replaced by steel covers, for dimensions see the following sketch.



Amsterdam 30<sup>th</sup> July 1948.

*Stenithoff*

G.H.W.

10 AUG 1948