

# Lloyd's Register of Shipping.

## SURVEYS FOR FREEBOARD.

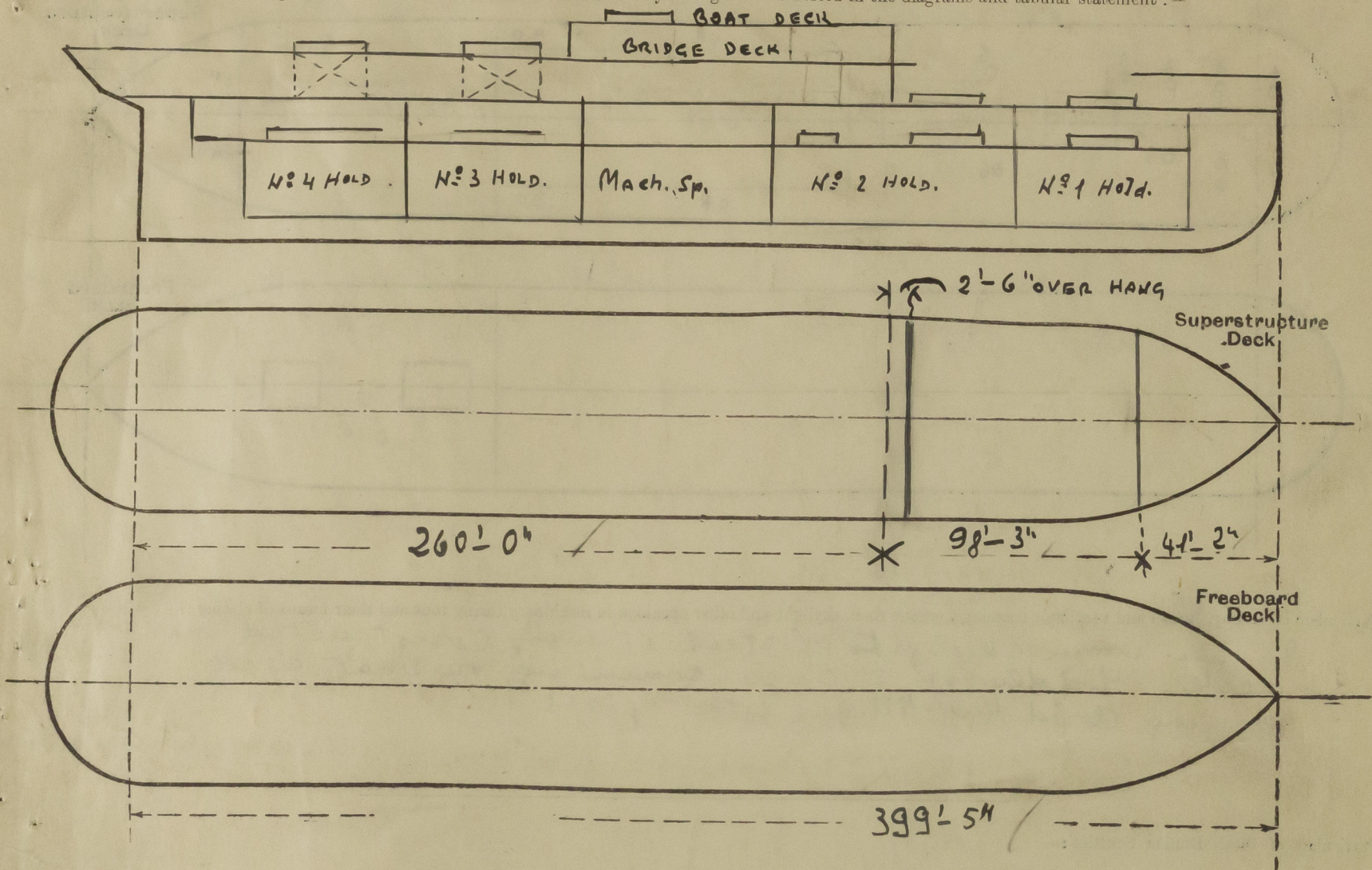
(CONDITIONS OF ASSIGNMENT.)

Index No. 29900.  
(For London Office only).

15 SEP 1947

Ship's Name *S.S. "PARITA BAY" ex "COLBORNE"* Port of Survey *GENOA*  
 Official Number *8 29* Surveyor's Signature *M. COSTANTINI*  
 Nationality and Port of Registry *PANAMENIAN PANAMA* Date of Survey *4 SEPTEMBER 1947*

Disposition and dimensions of superstructures, trunks, deckhouses and machinery casings to be inserted in the diagrams and tabular statement:—



Particulars of Superstructures, Trunks, Casings, Deckhouses.

	Coaming	Plating	Stiffeners	Spacing	End Attachments of Stiffeners	Size of Openings	Height of Sills	Height of Casings
Poop Bulkhead ...				—				
Raised Quarter Deck Bulkhead ...				—				
Bridge, After Bulkhead ...				—				
Bridge, Forward Bulkhead ...	44	40	8x3x40	27"	Bracketted	5'-1"x3'-6"	18"	—
Forecastle Bulkhead ...				OPEN				
Trunk, Aft ...				—				
Trunk, Forward ...				—				
Exposed Machinery Casings on Freeboard or Raised Quarter Decks ...				—				
Exposed Machinery Casings on Superstructure Decks ...				—				
Machinery Casings within Superstructures not fitted with Class I Closing Appliances ...				—				
Deckhouses on Flush Deck Ships ...				—				

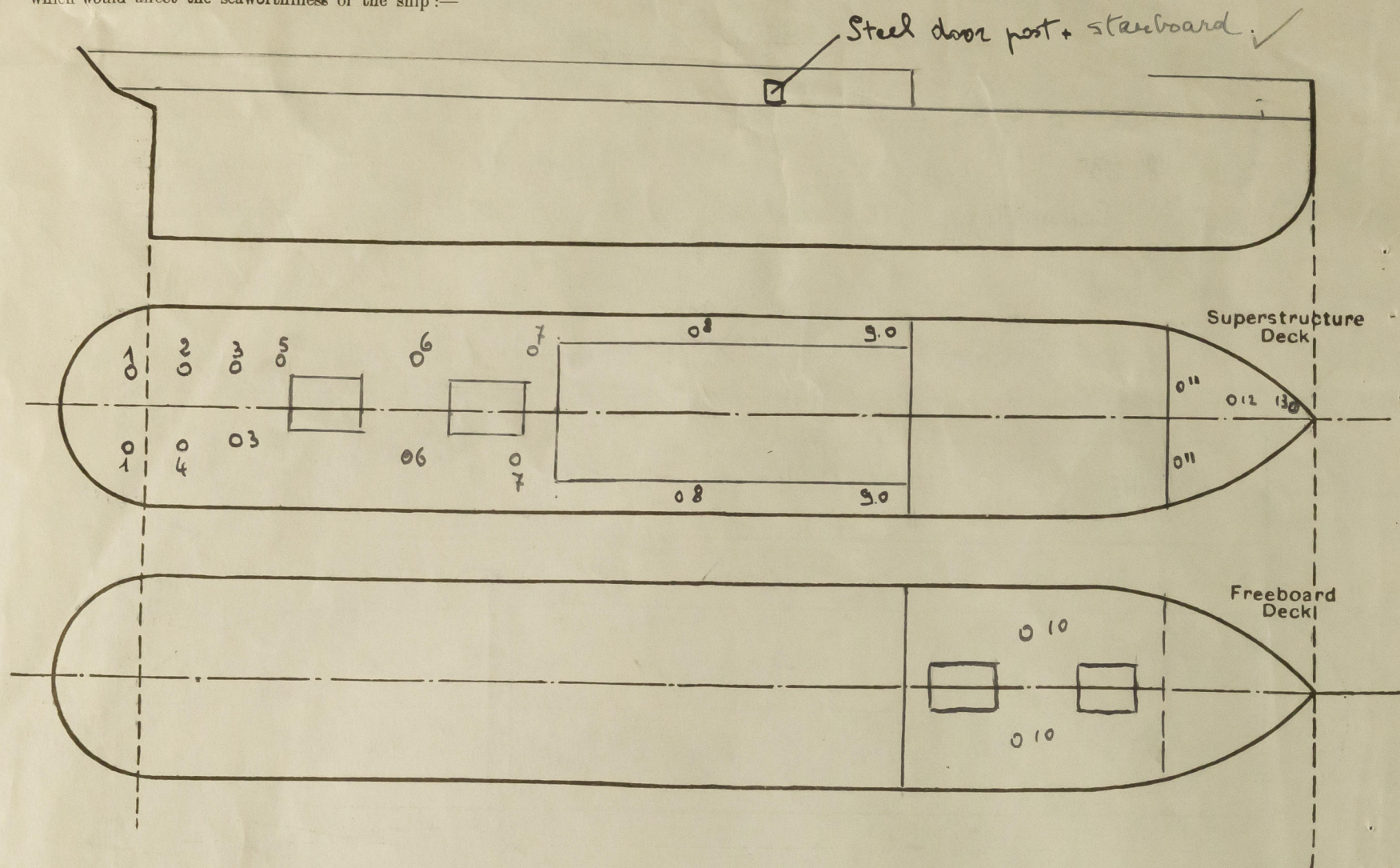
Particulars of Closing Appliances (state if capable of being manipulated from both sides).

Poop Bulkhead ...	—
Raised Quarter Deck Bulkhead ...	—
Bridge, After Bulkhead ...	—
Bridge, Forward Bulkhead ...	2 WT Ringed steel doors secured by clips capable of being operated from both sides.
Forecastle Bulkhead ...	open
Exposed Machinery Casings on Freeboard or Raised Quarter Decks ...	—
Exposed Machinery Casings on Superstructure Decks ...	—
Machinery Casings within Superstructures not fitted with Class I Closing Appliances ...	—
Deckhouses on Flush Deck Ships ...	—



# PARTICULARS OF PROTECTION TO OPENINGS, ETC.

The following diagrams should be used to indicate the positions of cargo and coaling hatchways, gangway, cargo and coaling ports, ventilators, companionways, etc., which would affect the seaworthiness of the ship:—



Particulars of fiddley, funnel and ventilator coamings, engine room skylight and other openings in machinery casing tops and their means of closing:—

Engine room skylight of steel strongly constructed on boat deck. Fiddley top 3" angle coaming on boat deck opening closed by hinged steel flaps.

Particulars of Flush Bunker Scuttles:—

Particulars of Companionways:—

Particulars of Ventilators in exposed positions on freeboard and superstructure decks:—

N <sup>o</sup> .	DIAM. IN.	HEIGHT. IN.	THICKNESS	LEADING TO:	N <sup>o</sup> OFF.	POSITION
1	18	22	30	Steering gear up.	2	Bridge deck
2	12	34	28	Accommodations	1	"
3	18	34	36	N <sup>o</sup> 4 hold	2	"
4	9"	34	28	Tunnel	1	"
5	13	32	30	Accommodations	1	"
6	18	35	40	N <sup>o</sup> 3 hold	2	"
7	12	33	28	Accom.	2	"
8	12	32	28	"	2	"
9	12	26	28	"	2	"
10	18	35	40	N <sup>o</sup> 2 hold	2	Upper deck
11	18	35	40	N <sup>o</sup> 1 hold	2	Forecastle
12	8	25	30	Store room	1	"
13	9	35	30	Fore peak	1	"

Particulars of Air Pipes in exposed positions on freeboard, raised quarter, or superstructure decks:—

N <sup>o</sup> .	DIAM. IN.	HEIGHT. IN.	LEADING TO:	N <sup>o</sup> OFF.	POSITION
1	3	9	N <sup>o</sup> 1 D.B.	2	Forecastle deck
2	3	9	Fore peak	1	"
3	3	36	N <sup>o</sup> 2 D.B.	2	Upper deck
4	3	30	N <sup>o</sup> 2 D.B.	2	Bridge deck
5	4	30	N <sup>o</sup> 3 D.B.	2	"
6	3	30	Side Bunkers	2	"
7	3	24	N <sup>o</sup> 5 D.B.	2	"
8	3 1/2	15	N <sup>o</sup> 5 D.B.	2	"
9	3	18	N <sup>o</sup> 6 D.B.	2	"

No means of closing where gauge where oil

Particulars of Gangway Cargo and Coaling Ports:—

Shell doors (one each side in bridge tween deck) Dimensions 4' - 10" x 2' - 6" strongly constructed & secured by steel strong backs.

Particulars of Scuppers and Sanitary Discharge Pipes:—

All discharges from bridge Tween deck & spaces above led through ship's sides below upper deck. Automatic non return valves without positive means of closing are provided. The valve casings are of bronze but in some cases cast iron casings are fitted. The cast iron casings are enclosed in strong wooden blocks secured by steel clamps and through bolts.

Particulars of Side Scuttles:—

10" side scuttles with hinged deadlights in fore-castle Tween deck and without deadlights in bridge Tween deck.

Vertical distance of Sill of lowest Side Scuttle above top of keel

Particulars of Guard Rails:—

Particulars of Gangways, Lifelines, etc.:—

all new better arrangements.

## Particulars of Freeing Arrangements.

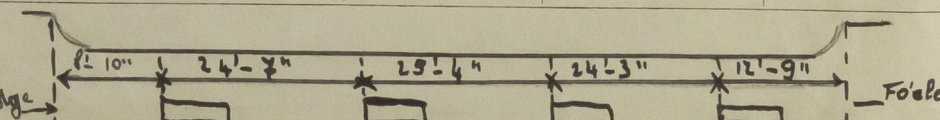
	Length of Bulwark	Height of Bulwark	Size of Freeing Ports	Number each side	Area each side	Rule area each side
After Well ...	—	—	—	—	—	—
Forward Well ...	95' 9"	44"	3' - 4" x 1' - 6"	FOUR.	20.0	19.15

State position of each freeing port ...

(F. and A. position and height above deck edge)

Whether the freeing ports are fitted with shutters, bars, or rails, and give particulars of such:—

Additional area where sheer is less than standard.



2 Horizontal Bars 3/4" d



# PARTICULARS OF PROTECTION TO OPENINGS, ETC.

HATCHWAYS ON FREEBOARD AND SUPERSTRUCTURE DECKS.											
← IN UPPER OK → ← ON BRIDGE →											
Description of Hatchway		Nº 1	Nº 2	Nº 3	Nº 4						
Dimensions of Hatchway		30'-4" x 21'-0"	32'-6" x 21'-0"	19'-7" x 17'-4"	17'-5" x 17'-2"						
COAMINGS	Height above Deck	28	28	27	27						
	Thickness	.44	.44	.44	.44						
	Sides	.44	.44	.44	.44						
	Ends	.44	.44	.44	.44						
Stiffeners		8 x 3 x .40	8 x 3 x .40	8 x 3 x .40	8 x 3 x .40						
Brackets, Stays		20 ft	20 ft	10 ft	10 ft						
HATCH BEAMS	Number	5	6	3	3						
	Spacing	5'	4.65'	5'	5'						
	Scantling and Sketch										
	Bearing Surface		4 x 3 x .48 18 x .36								
FORE AND AFTERS	Number										
	Spacing										
	Unsupported Lengths										
	Scantling* and Sketch										
Bearing Surface											
HATCH COVERS	Material	W.P.	W.P.	W.P.	W.P.						
	Thickness	2 3/4	2 3/4	2 3/4	2 3/4						
	How fitted	F&A	F&A	F&A	F&A						
	Bearing Surface	3"	3"	3"	3"						
Spacing of Cleats		24"	24"	24"	24"						
Number of Tarpaulins		3	3	3	3						
<p>*Are wood fore and afters steel shod at all bearing surfaces? YES</p> <p>Are battens and wedges efficient and in good condition? YES</p> <p>Are tarpaulins in good condition and in accordance with rule requirements? YES.</p> <p>Are lashings provided in accordance with rule requirements? NETTING.</p>											

Particulars of any special features:—

This vessel used to carry passengers but although the accommodation is still existing no passengers are carried and the passenger spaces are used by the crew.

The vessel is now undergoing general examination.

Endorsement at first survey and at surveys for renewal of Certificate:—

The fittings and appliances are in accordance with the particulars shown on this form (or as now modified) and are in good condition.



© 2020

Lloyd's Register Foundation