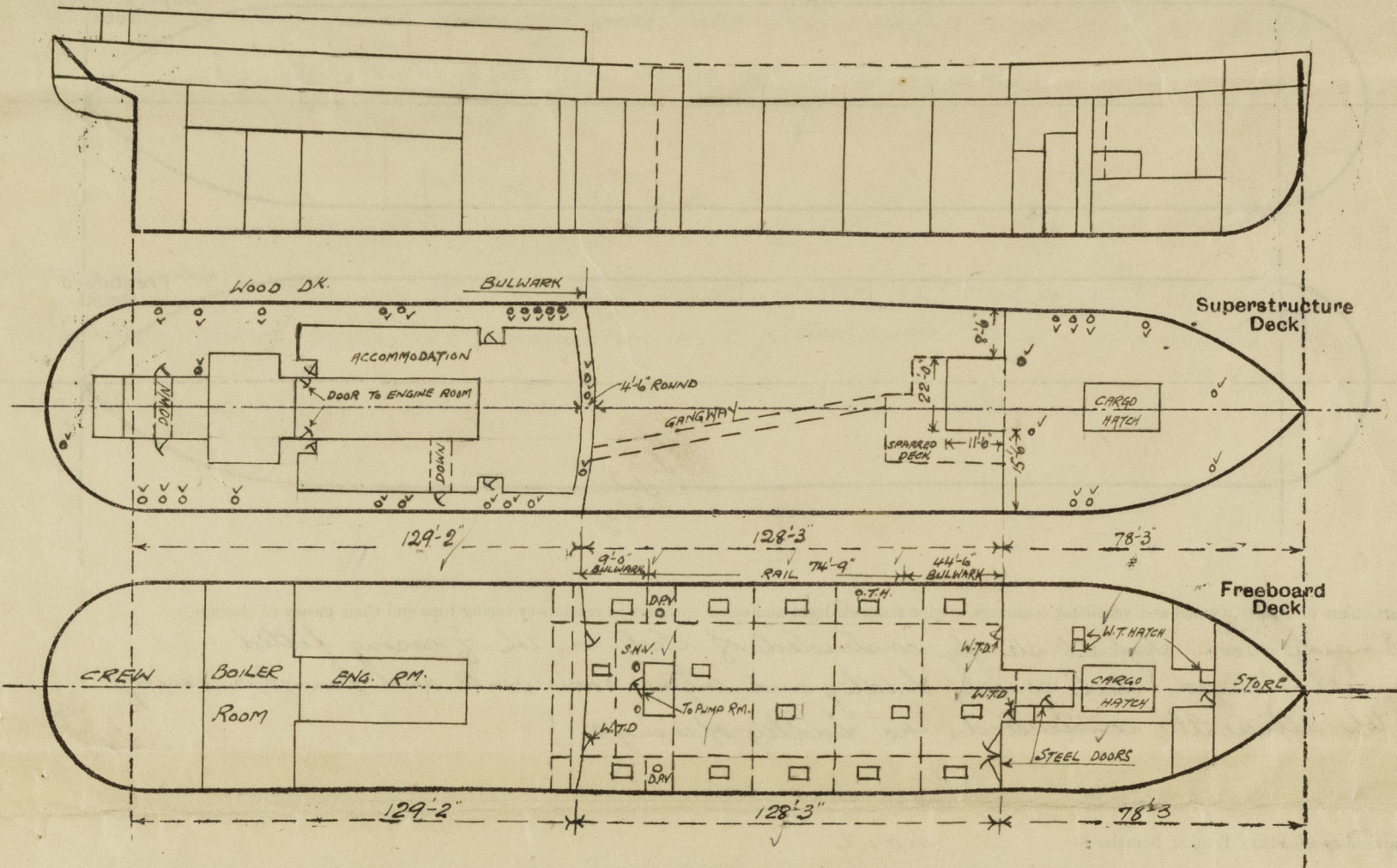


Lloyd's Register of Shipping.
SURVEYS FOR FREEBOARD.
(CONDITIONS OF ASSIGNMENT.)

DUNDEE REPORT No 9262.

Ship's Name "GREEN RANGER" Port of Survey DUNDEE.
Official Number 168231 Surveyor's Signature H. McQueen.
Nationality and Port of Registry BRITISH, LONDON Date of Survey DURING CONSTRUCTION.

Disposition and dimensions of superstructures, trunks, deckhouses and machinery casings to be inserted in the diagrams and tabular statement:--



Particulars of Superstructures, Trunks, Casings, Deckhouses.

	Coaming	Plating	Stiffeners	Spacing	End Attachments of Stiffeners	Size of Openings	Height of Sills	Height of Casings
Poop Bulkhead	40	40	8x3x40" B.A.	2'-6"	Welded top & bottom	5'-0" x 3'-0"	1'-6"	4'-9"
Raised Quarter Deck Bulkhead								
Bridge, After Bulkhead								
Bridge, Forward Bulkhead								
Forecastle Bulkhead		26	3x2 1/2x38 RIG ON ALX 3 1/2x3x30"	2'-8"	NONE	5'-0"x2'-6" 2'-0"x2'-0" 11'-0"x8'-0" 4'-6"x2'-6"	1'-6" 4"x1'-6"	9'-2"
Trunk, Aft								
Trunk, Forward								
Exposed Machinery Casings on Freeboard or Raised Quarter Decks								
Exposed Machinery Casings on Superstructure Decks	30	26	3 1/2x2 1/2x28"	2'-4"	NONE	5'-0" x 2'-3"	20"	4'-9"
Machinery Casings within Superstructures not fitted with Class I Closing Appliances								
Deckhouses on Flush Deck Ships								

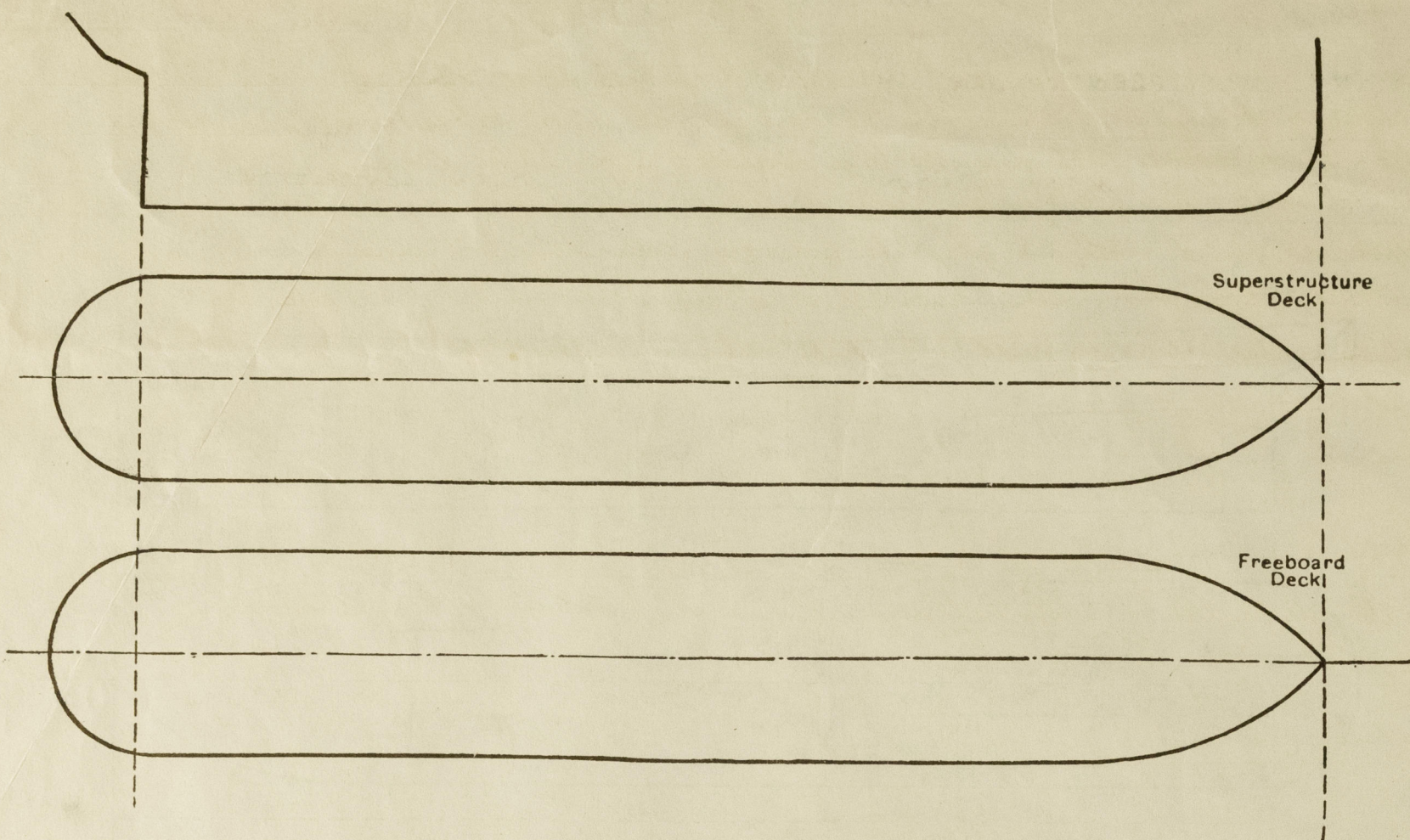
Particulars of Closing Appliances (state if capable of being manipulated from both sides).

Poop Bulkhead	Hinged W.T. steel doors operated both sides ✓
Raised Quarter Deck Bulkhead	
Bridge, After Bulkhead	
Bridge, Forward Bulkhead	
Forecastle Bulkhead	Two hinged W.T. doors and two hinged steel doors. ✓
Exposed Machinery Casings on Freeboard or Raised Quarter Decks	
Exposed Machinery Casings on Superstructure Decks	Wood doors operated both sides.
Machinery Casings within Superstructures not fitted with Class I Closing Appliances	
Deckhouses on Flush Deck Ships	

GREEN RANGER

Particulars of Gangway Cargo and Coaling Ports :—

NONE.



Engine Room skylight strongly constructed of steel on top of casing fitted with hinged steel covers. Slidley and engine room vents and funnel on casing. Vts efficiently constructed. No. Slidley openings. ✓

houl

Particulars of Ventilators in exposed positions on freeboard and superstructure decks :—

UPPER DECK.

There are a number of S.N. vents on Pooh & side decks. 36" high on Side & 30" high on Pooh.

All ventilator openings closed by steel
plugs and canvas covers. Gauge on petrol
pump room.

Locations of the exposed portions of the main, raised quarter, or superstructure beams.				
3" DIA	AIR	PIPE	TO	FORE PEAK TANK ON FORE DECK 18' HIGH.
3"	"	"	"	WATER BALLAST " " " "
2 1/2"	"	"	"	FRESH WATER " " " "
2"	"	"	"	CORRODAM " " " "
4"	"	"	"	WATER BALLAST " " " "
2"	"	"	"	COFF M " " POOP
3"	"	"	"	D.B. OIL FUEL TANK " " " "
4"	"	"	"	O.F. BUNKER " " " "
2"	"	"	"	D.B. CORRODAM " " " "
2 1/2"	"	"	"	D.B. FEED TANK " " " "
2"	"	"	"	D.B. CORRODAM " " " "
3"	"	"	"	WATER BALLAST " " " "
2 1/2"	"	"	"	AFT. PEAK " " " "

All air pipes closed with wood
plugs and canvas covers copper
gauge on oil fuel. ✓

Particulars of Scuppers and Sanitary Discharge Pipes:— Soil pipes from Poop space discharge overboard below upper deck and are fitted with S.V. at ship side & non-return valves at inner end. Soil pipes from spaces above poop deck discharge overboard above upper deck and are fitted with S.V. at ship side. All scuppers from poop space discharge overboard, below upper deck are fitted with S.V. at ship side and screw plugs at inner end. Basin & sink discharge from poop space discharge overboard below upper deck and are fitted with storm valve at ship side and stop valve at inner end.

Particulars of Side Scuttles:—

Particulars of Side Scuttles:— There are 12½" dia side scuttles fitted in Roof and L'sle spaces. All side scuttles of substantial construction and fitted with hinged deadlights.

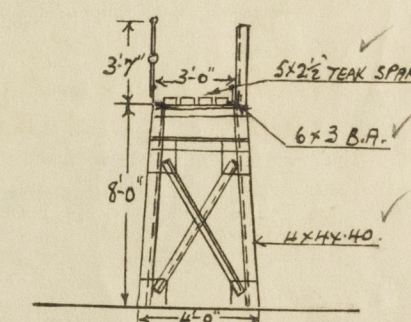
Vertical distance of Sill of lowest Side Scuttle above top of keel. 28'-0" /

Particulars of Guard Rails :—

Guard Rail on Side Deck 3'-6" high with 3 rods ✓
Guard Rail on Upper Deck 4'-0" " " 3 rods. ✓
Bulwark on Upper Deck 4'-0" high with 6 B.A. stays. ✓
Bulwark on Poop 3'-8" high with angle stays. ✓

Particulars of Gangways, Lifelines, etc. :—

GANGWAY. do per sketch from Prop. Dk to Lacle Dk
do per approved plan.
Putnam's hands about 7'-6" apart.

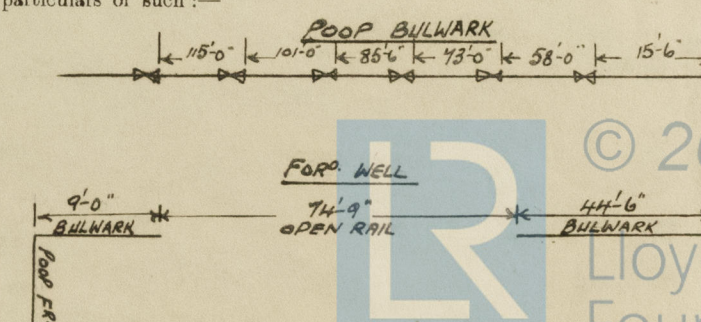


Particulars of Freeing Arrangements.						
	Length of Bulwark	Height of Bulwark	Size of Freeing Ports	Number each side	Area each side	Rule area each side
After Well POOP DECK	129'-2"	3'-8"	3 @ 3'-0" x 9" 3 @ 3'-6" x 9"	6	14.625 π	14 π
Forward Well	128'-3"	4'-0"			then rails for length of upper & lower	then rails for length of upper & lower

(F. and A. position and height above deck edge) { Forward Well:—

State whether the freeing ports are fitted with shutters, bars, or rails, and give particulars of such:—

Additional area where sheer is less than standard



PARTICULARS OF PROTECTION TO OPENINGS, ETC.

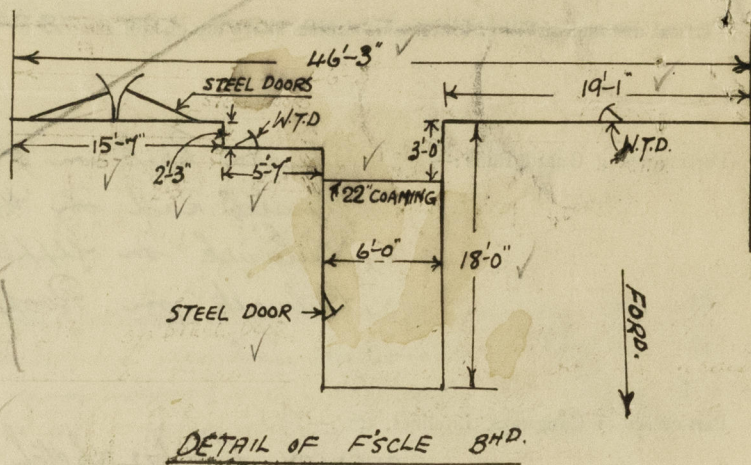
HATCHWAYS ON FREEBOARD AND SUPERSTRUCTURE DECKS.									
Description of Hatchway	CARGO HATCHWAY ON FSCLE	CARGO HATCHWAY ON UPPER DECK	OIL HATCHES ON UPPER DECK				
Dimensions of Hatchway	20'3" x 10'0"	20'3" x 10'0"	3'11 1/4" x 2'9"				
COAMINGS	Height above Deck	...	2'6"	9" B.A.	2'6"				
	Thickness44	COAMING	.40				
	Sides44		.40				
	Stiffeners	...	4/8" B.A.	✓	4 x 3" VERT.				
	Brackets, Stays	...	2 STAYS	✓	STIFFEN INSIDE				
HATCH BEAMS	Number	...	1	3					
	Spacing	...	10' 1/2"	5'0 3/4"					
	Scantling and Sketch	...							
	Bearing Surface	...	3 1/2"	3 1/2"					
FORE AND AFTERS	Number	...	1						
	Spacing	...	5'0"						
	Unsupported Lengths	...	9'10"	✓	✓				
	Scantling* and Sketch	...							
	Bearing Surface	...	3 1/2"						
HATCH COVERS	Material	...	STEEL	H.W.	50 STEEL				
	Thickness50	3"	OIL TIGHT				
	How fitted	...	HINGED W.T.	F & A.	HATCH WITH				
	Bearing Surface	...	SECURED BY TURNBUCKLES	3"	ANGLE STIFF SECURED BY TURNBUCKLES				
Spacing of Cleats		2'0"					
Number of Tarpaulins	NIL	TWO					

*Are wood fore and afters steel shod at all bearing surfaces? **STEEL**
 Are battens and wedges efficient and in good condition? **YES**
 Are tarpaulins in good condition and in accordance with rule requirements? **YES**
 Are lashings provided in accordance with rule requirements? **YES**

Particulars of any special features:— *This vessel is an oil tanker and built in accordance with the approved plans.*

DISPLACEMENT PARTICULARS.

MOULDED DRAFT	MOULDED Δ	BLOCK COEFF.	T.P.I.
21'-1 1/2"	4025	.4238	31.85
20'-1 1/2"	6645	.4186	31.55
19'-1 1/2"	6240	.4135	31.22



Endorsement at first survey and at surveys for renewal of Certificate:—

The fittings and appliances are in accordance with the particulars shown on this form (or as now modified) and are in good condition.



© 2020

Lloyd's Register Foundation