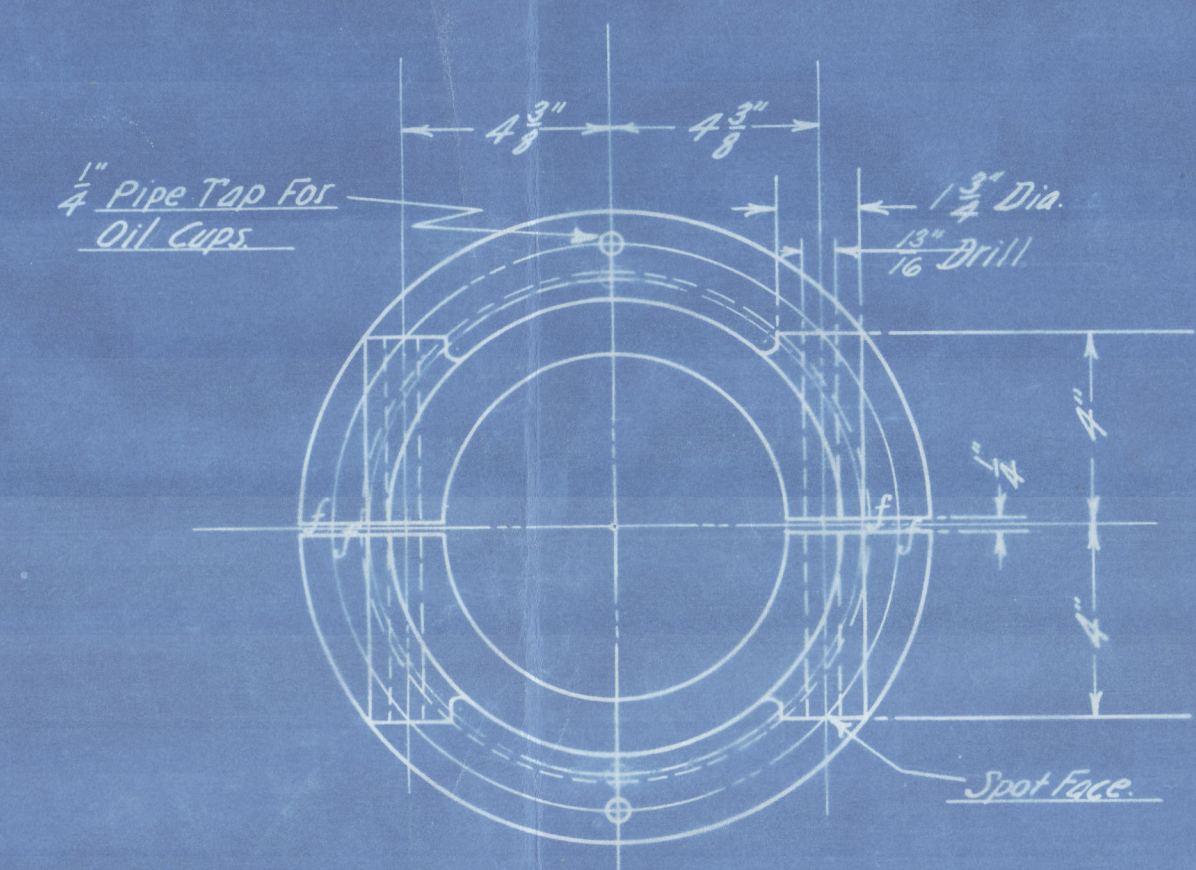
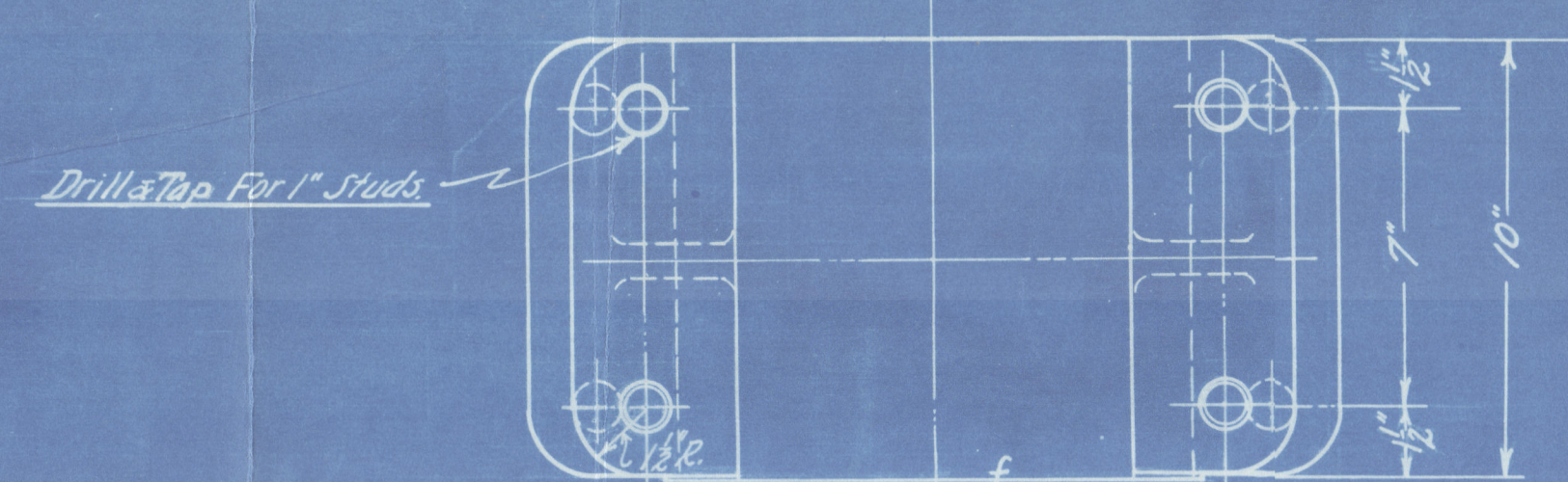


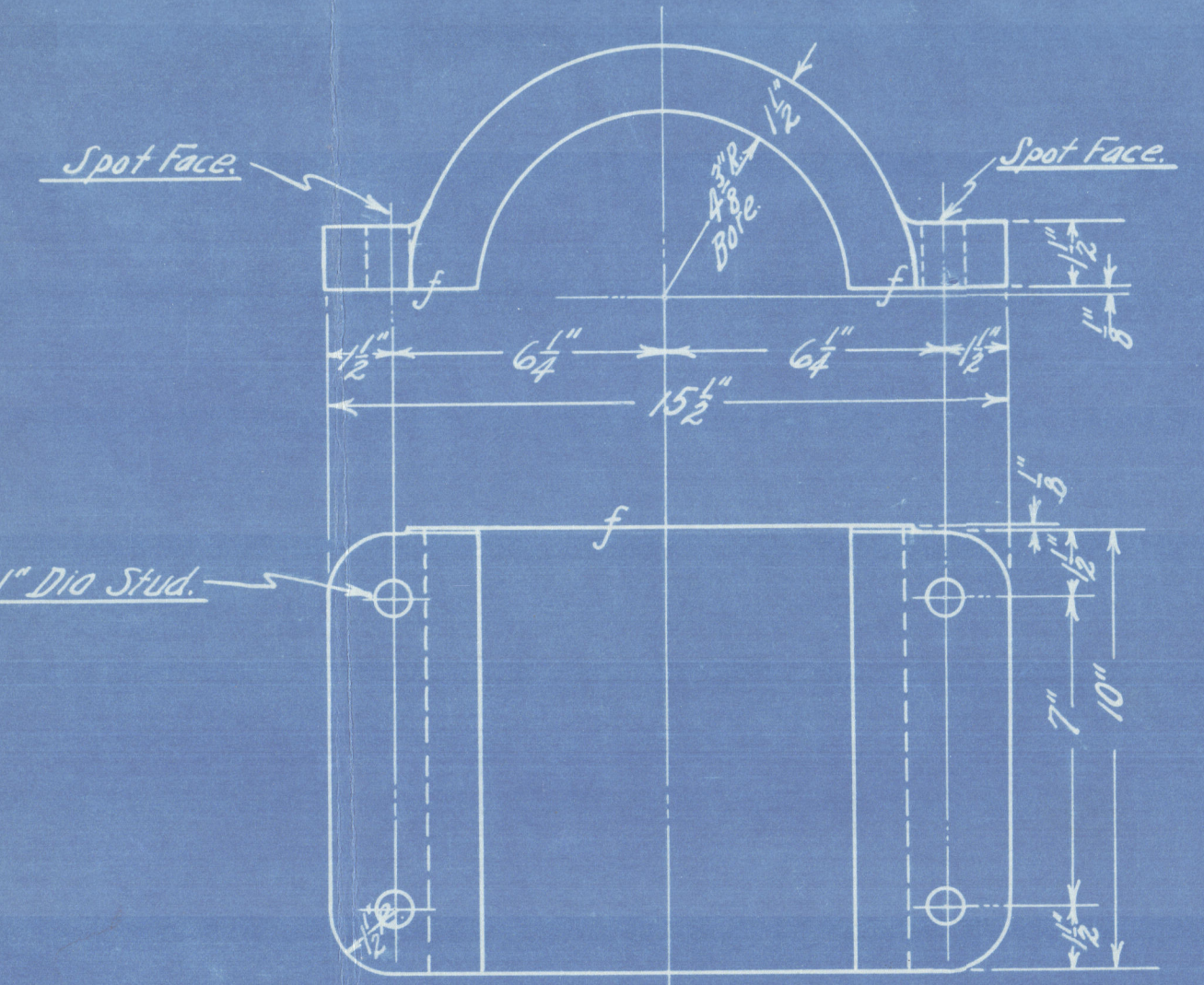
THRUST BEARING RING
PHOS. BEZ. PATT. NO. G



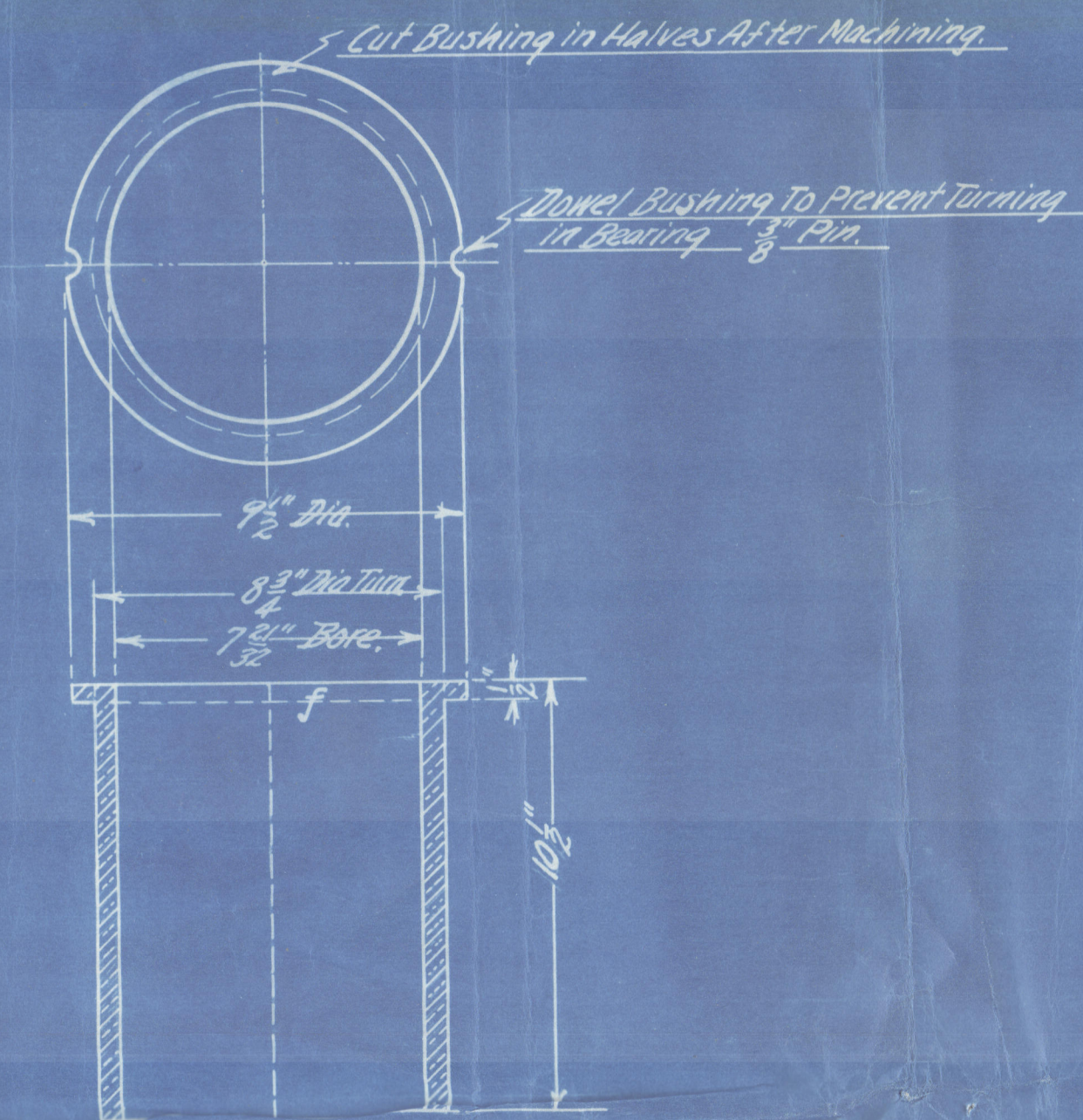
THRUST BEARING CAP
C.S. PATT. NO. H



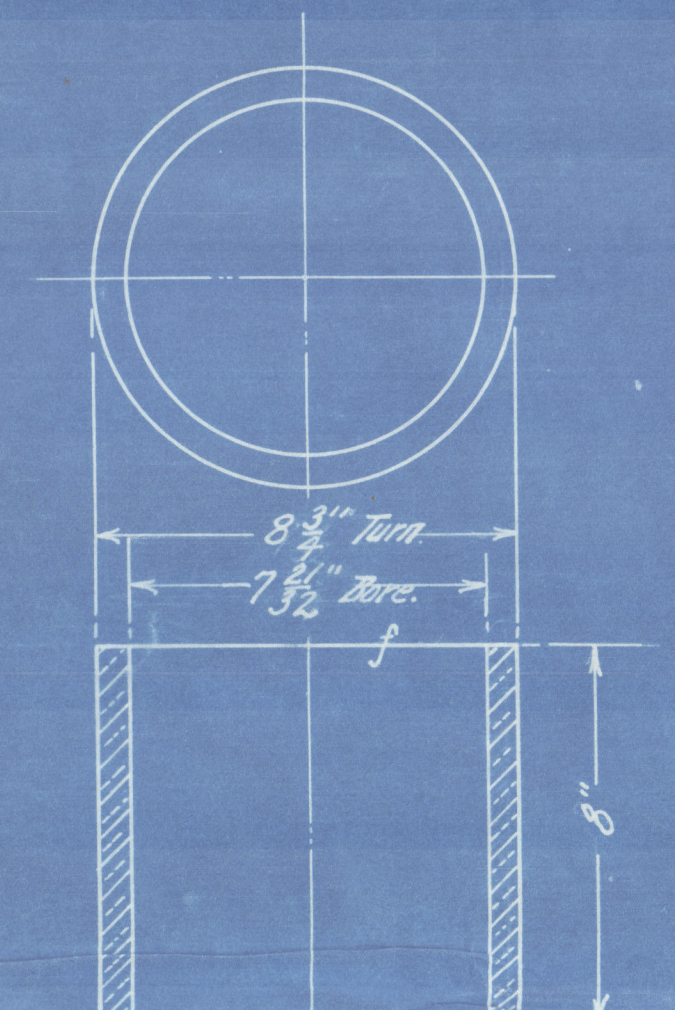
TOP RUDDER BEARING
C.I. PATT. NO. 3149-B



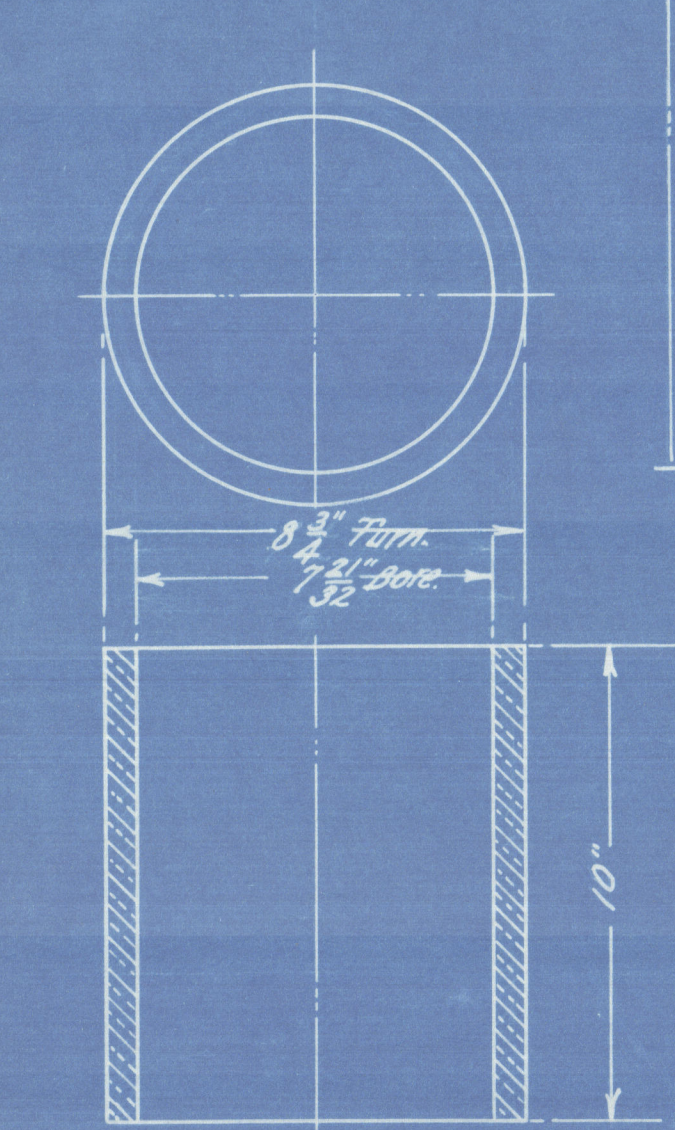
TOP RUDDER BEARING CAP
C.I. PATT. NO. 3149-C



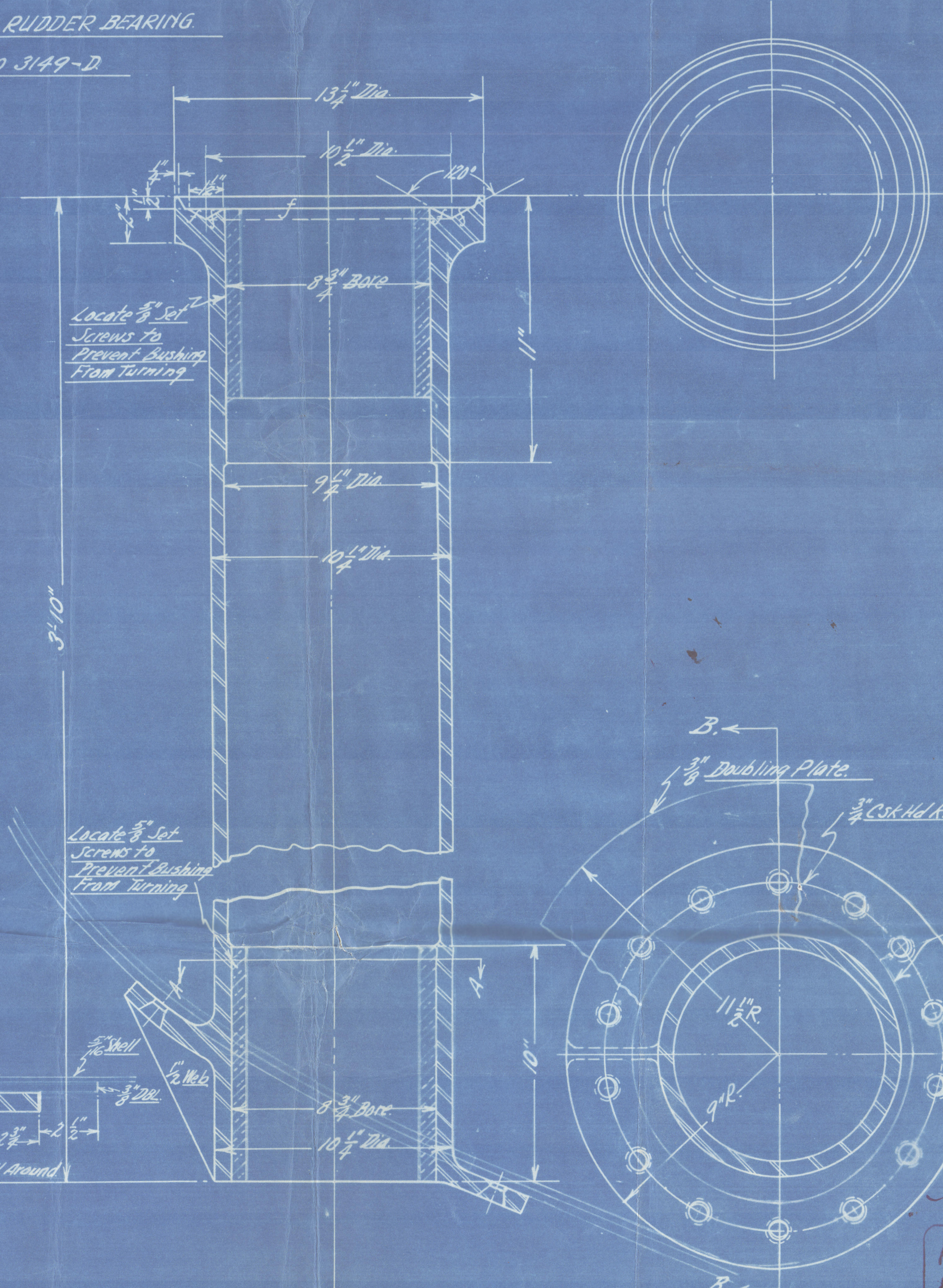
BUSHING FOR TOP RUDDER BEARING
PHOS. BEZ. PATT. NO. 3149-D



BUSHING FOR TOP OF THRUST BEARING
PHOS. BEZ. PATT. NO. 3149-E



BUSHING FOR BOTTOM OF THRUST BEARING
PHOS. BEZ. PATT. NO. 3149-F



RUDDER TRUNK
C.S. PATT. NO. 3149-A

Note: Mold Lost to Supply Pattern Maker
With necessary templates in way of
Hull & Deck for Making Pattern.

ORD. DATE	QUANTITY	UNIT NO.
1930	1	1
1930	1	1
1930	1	1
1930	1	1
1930	1	1
1930	1	1
1930	1	1
1930	1	1
1930	1	1
1930	1	1

APPROVED
 1 JUL 15 1937
 LLOYD'S REGISTER OF SHIPPING
 NEW YORK
 LLOYD'S REGISTER OF SHIPPING
 NEW YORK
 3149

Hull 210

Rpt 412

Arrangements & Details of Rudder

"Zapatoca"

blw 412

003191-003199-0016



© 2020

Lloyd's Register
Foundation