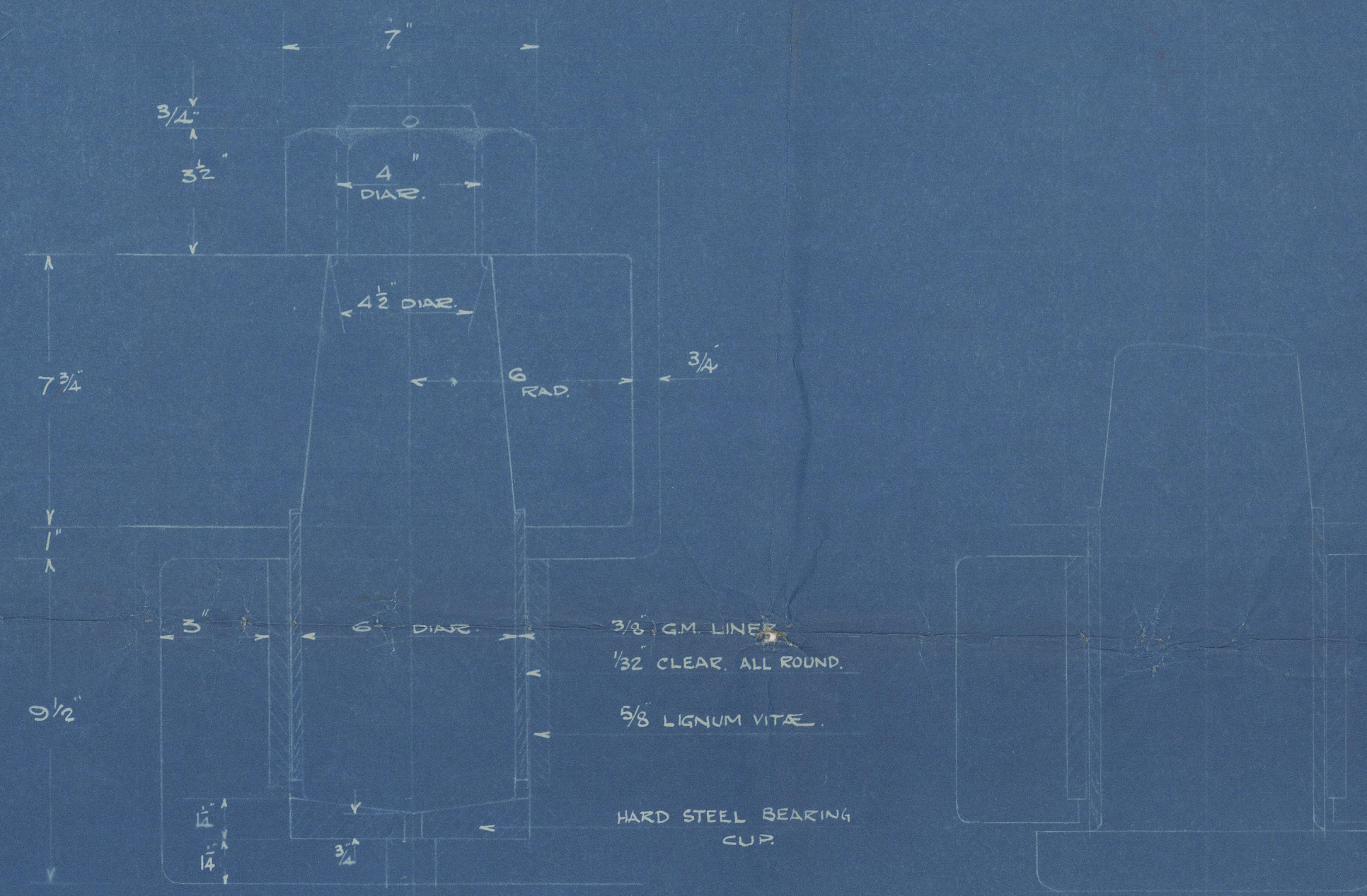


10.2.36

Nº 984. RUDDER & STERNFRAME SCALE = 1/2" = 1 FOOT



LOWER PINTLES. LOCKING PINTLE

SCALE 1/4" = 1 INCH

HOLE TAPPED FOR LIFTING EYEBOLT

KEYWAY

STEADIMENT

STEADIMENT & WT. GLAND

WT. TRUNK

6 - 3/4" DIA. TURNED & FITTED BOLTS

LOCKING PINTLE

SECTION THRO' RUDDER POST AT 'A A'

SECTION THRO' RUDDER POST AT 'A A'

SECTION THRO' RUDDER POST AT 'A A'

SECTION THRO' RUDDER POST AT 'A A'

SECTION THRO' RUDDER POST AT 'A A'

SECTION THRO' RUDDER POST AT 'A A'

SECTION THRO' RUDDER POST AT 'A A'

SECTION THRO' RUDDER POST AT 'A A'

SECTION THRO' RUDDER POST AT 'A A'

SECTION THRO' RUDDER POST AT 'A A'

SECTION THRO' RUDDER POST AT 'A A'

SECTION THRO' RUDDER POST AT 'A A'

SECTION THRO' RUDDER POST AT 'A A'

SECTION THRO' RUDDER POST AT 'A A'

SECTION THRO' RUDDER POST AT 'A A'

SECTION THRO' RUDDER POST AT 'A A'

SECTION THRO' RUDDER POST AT 'A A'

SECTION THRO' RUDDER POST AT 'A A'

SECTION THRO' RUDDER POST AT 'A A'

SECTION THRO' RUDDER POST AT 'A A'

SECTION THRO' RUDDER POST AT 'A A'

SECTION THRO' RUDDER POST AT 'A A'

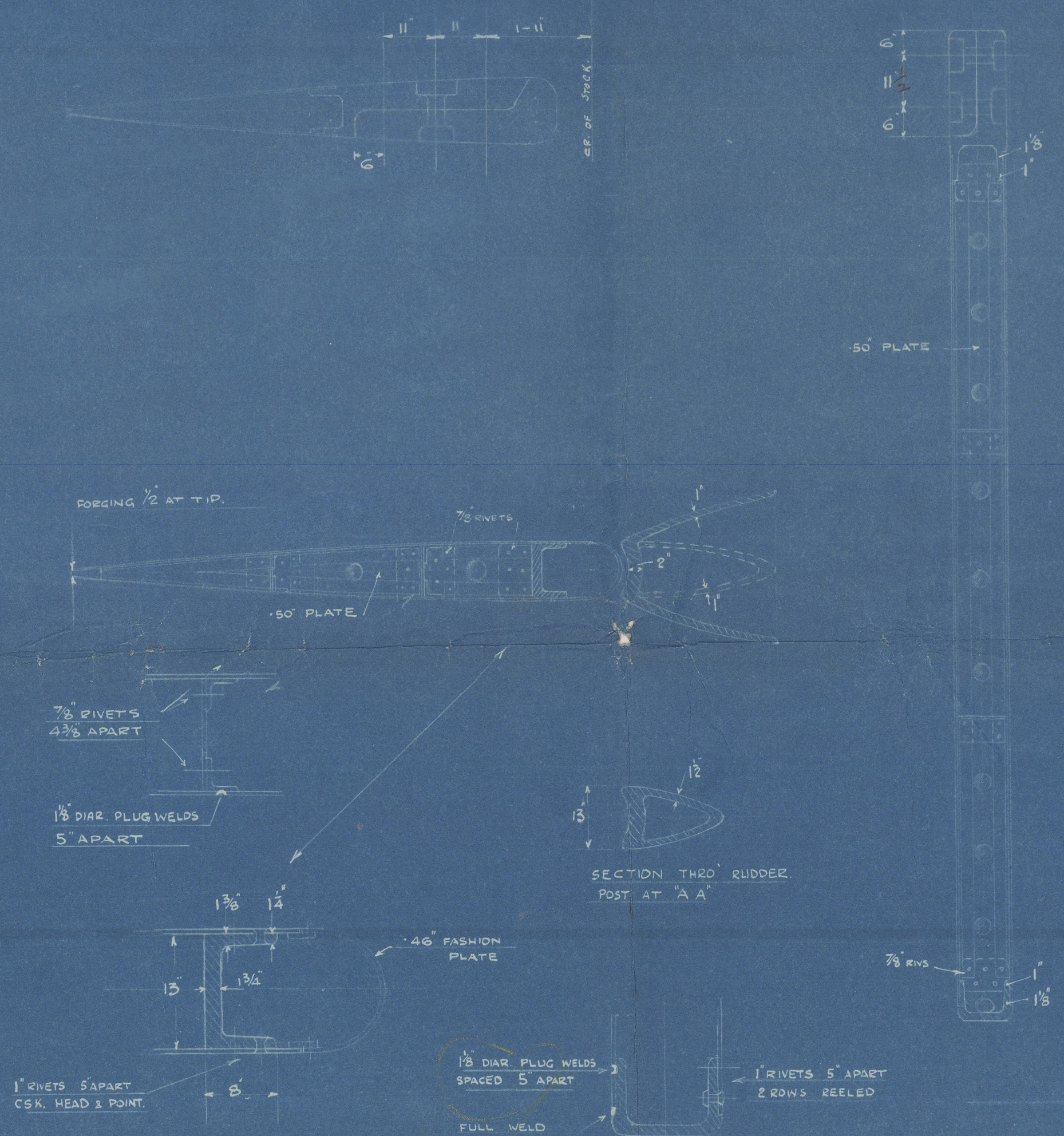
SECTION THRO' RUDDER POST AT 'A A'

SECTION THRO' RUDDER POST AT 'A A'

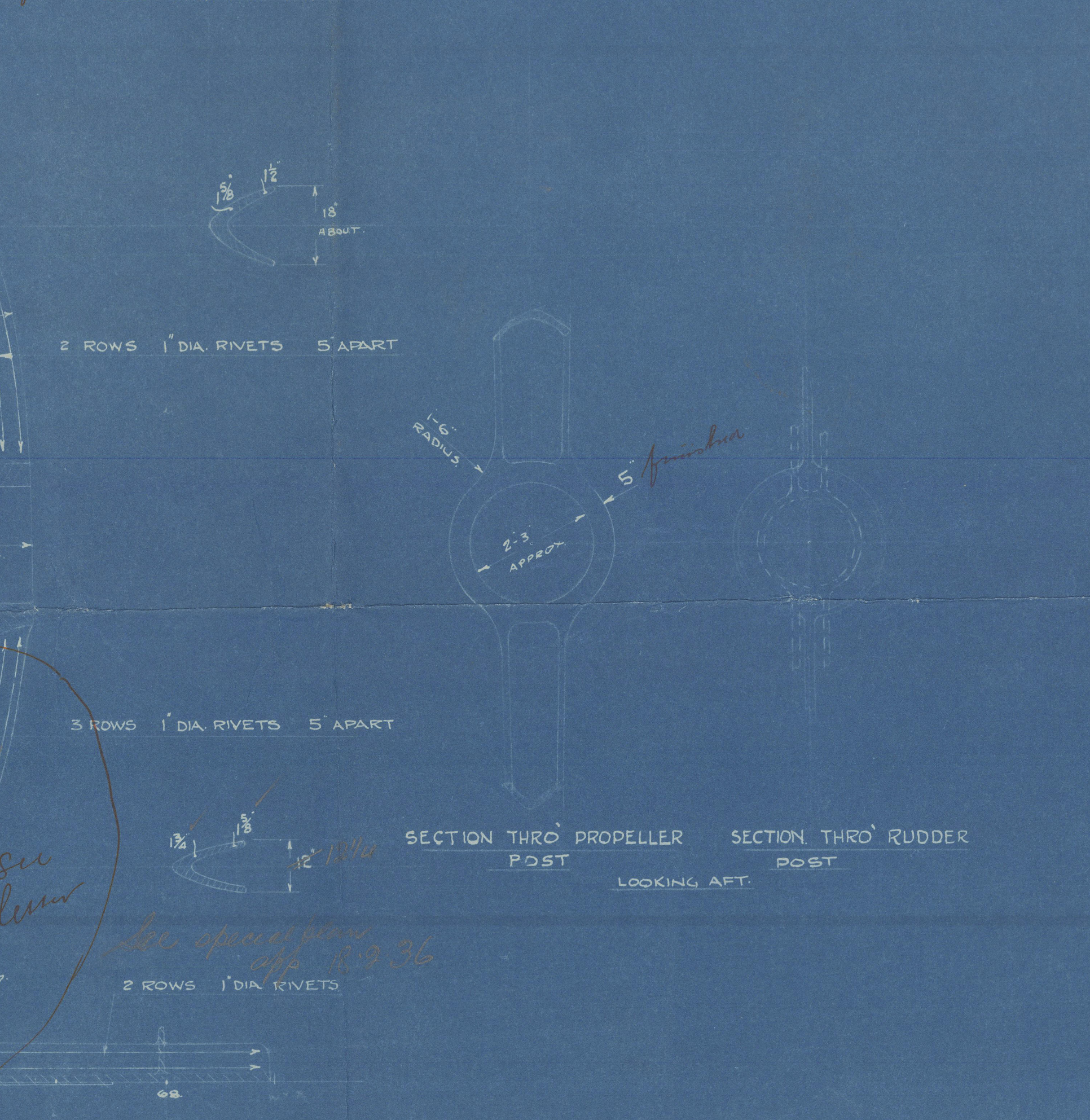
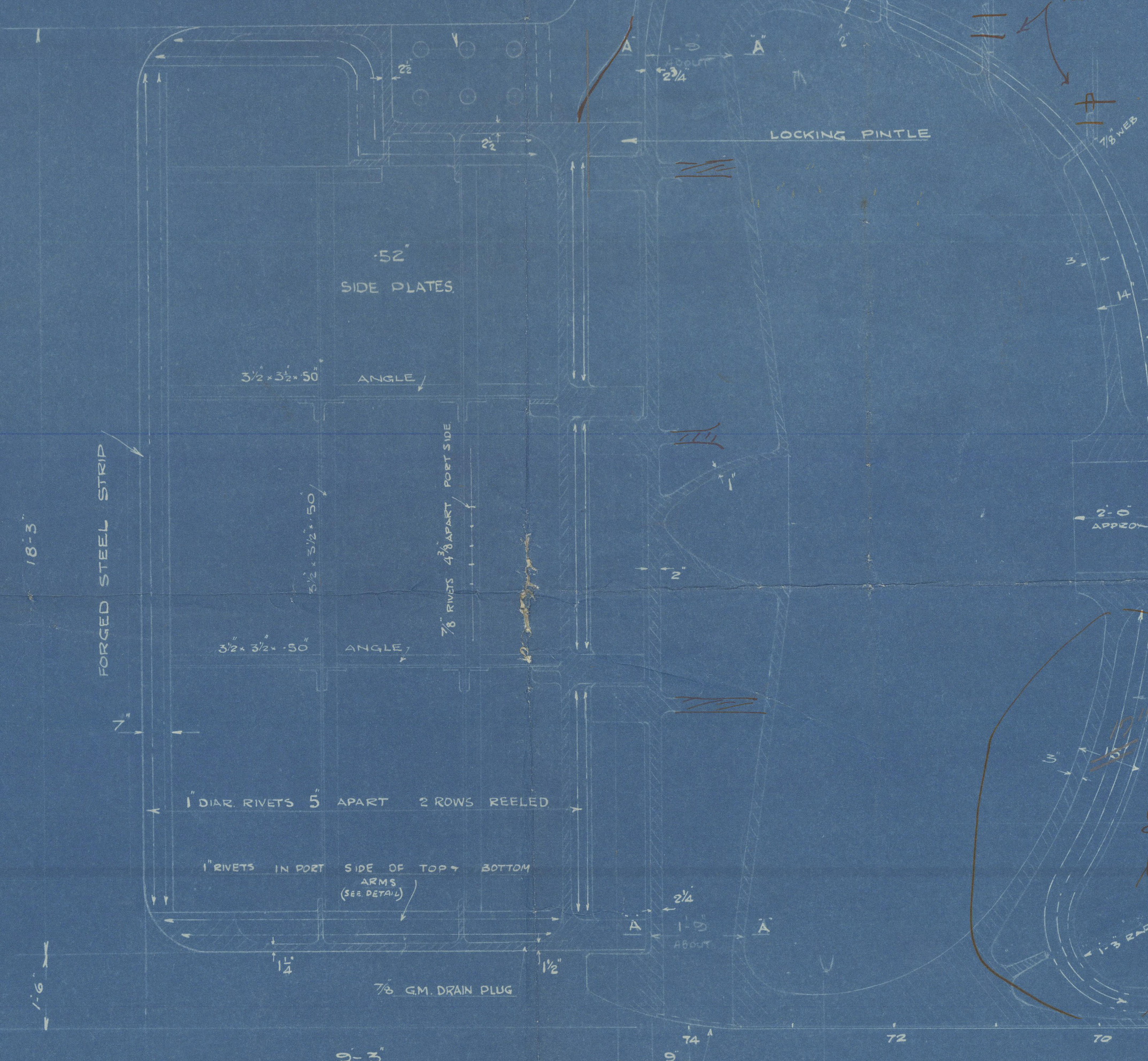
STERNFRAME	CAST STEEL
RUDDER FRAME	" "
RUDDER STOCK	FORGED STEEL
ALL TO LLOYD'S TESTS & REQUIREMENTS	
SPEED OF VESSEL	12 KNOTS
RUDDER AREA	168 sq ft
MAX HELM ANGLE	40°
AREA COEFFICIENT	0.66

FORGED STEEL PINTLES COMPLETE WITH GM LINE NUTS & SPLINT PINS TO BE SUPPLIED WITH RUDDER ALSO FORGED STEEL STRIP AT AFT END AND FITTED COUPLING BOLTS TOGETHER WITH KEY FOR SCREWING UP THESE BOLTS. RIVET HOLES TO BE DRILLED & GM DRAIN PLUG TO BE FITTED IN RUDDER FRAME ALSO KEYWAY TO BE CUT & HOLE TAPPED FOR LIFTING IN UPPER STOCK. LIGNUM VITAE BUSHES & HARD STEEL BEARING CUPS TO BE FITTED IN STERNFRAME GUDGEONS CLOSING PLATE FITTED AT FOOT OF STERNFRAME ALL RIVET HOLES TO BE DRILLED IN STERNFRAME THE FOLLOWING PARTS (TINTED RED) TO BE MACHINED RUDDER STOCK, PAGES OF RUBBER COUPLING, PINTLES, STERNFRAME & RUDDER GUDGEONS, BORE & ENDS OF PROPELLER BOSS, SURFACE AT HEEL OF STERNFRAME IN WAY OF KEEL PLATE. PLATES & ANGLES SUPPLIED BY SHIPBUILDERS.

TO BE CARRIED OUT BY CONTRACTORS



SECTION THRO' RUDDER MAINPIECE ATTACHMENT OF SIDE PLATES TO TOP & BOTTOM ARMS



SECTION THRO' PROPELLER POST SECTION THRO' RUDDER POST

Harland & Wolff's
N^o 984

Stern frame & rudder.
N^o 5.

m/s. Erndbank



© 2020

Lloyd's Register
Foundation

003175-003180-0094