

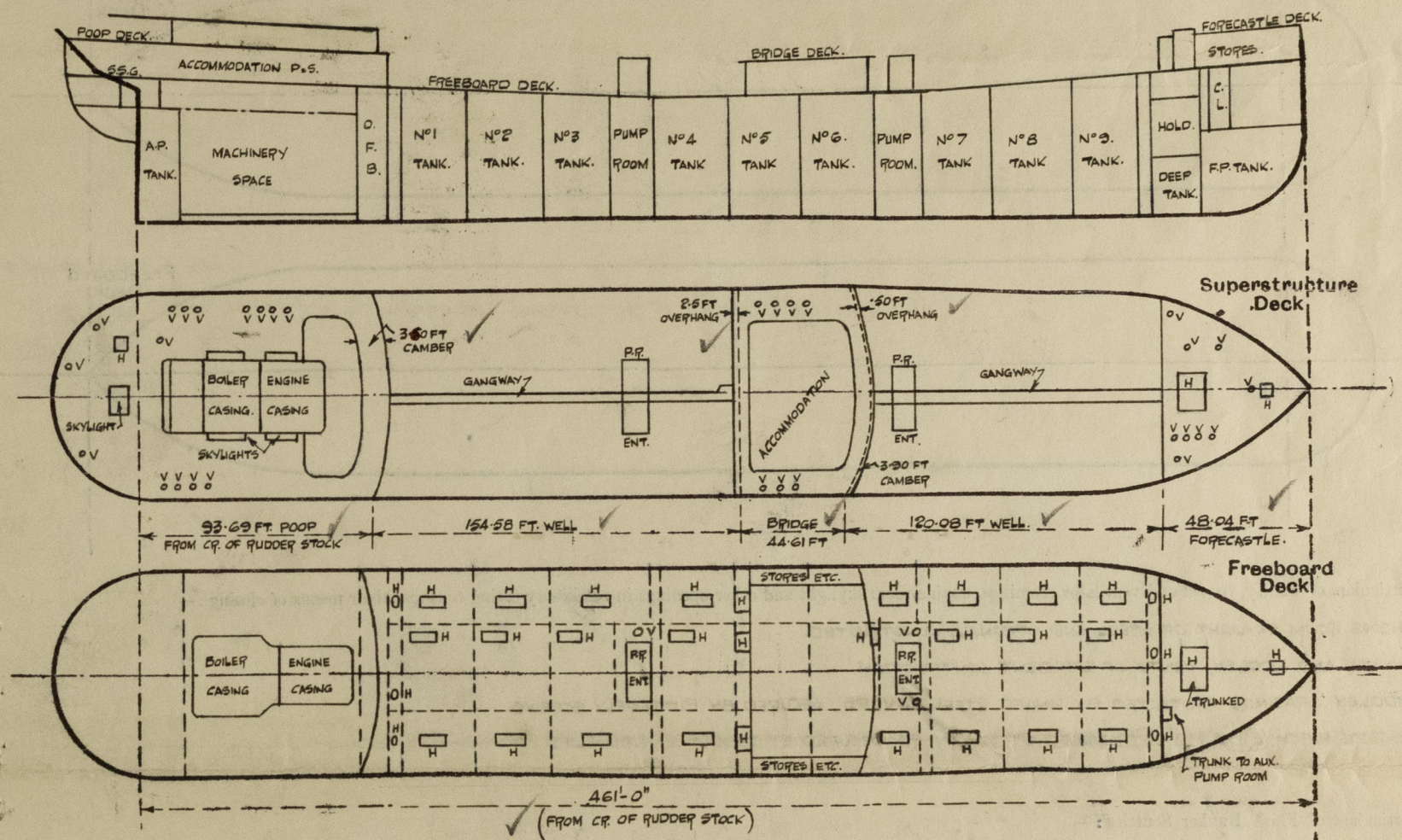
Lloyd's Register of Shipping.

SURVEYS FOR FREEBOARD.

(CONDITIONS OF ASSIGNMENT.)

Ship's Name **NICANIA**Port of Survey **NEWCASTLE-ON-TYNE**Official Number **168283**Surveyor's Signature *J. Muir*Nationality and Port of Registry **BRITISH**Date of Survey **DURING CONSTRUCTION, 1941-2**

Disposition and dimensions of superstructures, trunks, deckhouses and machinery casings to be inserted in the diagrams and tabular statement:—



Particulars of Superstructures, Trunks, Casings, Deckhouses.								
	Coaming	Plating	Stiffeners	Spacing	End Attachments of Stiffeners	Size of Openings	Height of Sills	Height of Casings
Poop Bulkhead44 ✓		10" x 3 1/2" x 40 B.A. ✓	ABOUT 30" ✓	LUGS AT TOP BRACKETS AT BOTTOM	5'-0" x 2'-10" (2) ✓	18" ✓	7'-6" ✓
Raised Quarter Deck Bulkhead ...	NONE							
Bridge, After Bulkhead32" ✓	5" x 3" x 30 ANG.	ABOUT 30"	FIVE THROUGH BOUNDARY BARS.	5'-0" x 3'-0 3/4" (2) A 5'-0" x 2'-0" (1) B	18" ✓ 20" ✓	7'-6" ✓
Bridge, Forward Bulkhead44" ✓	9" x 3 1/2" x 42" B.A.	" 33" ✓	BRACKETS TOP AND BOTTOM	5'-0" x 2'-6" (1) ✓	19" ✓	7'-6"
Forecastle Bulkhead32" ✓	4" x 3" x 34 ANG.	" 30" ✓	FIVE THROUGH BOUNDARY BARS.	5'-0" x 2'-6" (1) A 5'-1" x 4'-1" (1) B 4'-1" x 2'-0" (1) C	18" ✓ 23 1/2" ✓ 24" ✓	7'-6" ✓
Trunk, Aft ...	NONE							
Trunk, Forward ...	NONE							
Exposed Machinery Casings on Freeboard or Raised Quarter Decks ...	NONE							
Exposed Machinery Casings on Superstructure Decks34	.30"	3" x 3" x 30 ANG.	30 3/4"	BRACKETS AT TOP CONT. BELOW SUPER DECK.	NONE		8'-4" ✓
Machinery Casings within Superstructures not fitted with Class I Closing Appliances ...	NONE							
PUMP ROOM ENTRANCES Deckhouses on Flush Deck Ships40 FRONT & SIDES .30 AFT END	6" x 3" x 36 B.A. 4" x 3" x 32 ANG.	ABOUT 30" x 33" " 30"	BRACKETS AT TOP LUGS BOTTOM BRACKETS AT TOP	4'-6" x 2'-3" IN EACH ENTRANCE.	24"	7'-6" ✓

Particulars of Closing Appliances (state if capable of being manipulated from both sides).

Poop Bulkhead ...	2 HINGED STEEL W.T. DOORS OPERATED FROM BOTH SIDES. ✓
Raised Quarter Deck Bulkhead ...	NONE ✓
Bridge, After Bulkhead ...	B 1 HINGED STEEL W.T. DOOR OPERATED FROM BOTH SIDES ✓ A 2 PORTABLE STEEL PLATES SECURED BY HOOK BOLTS SPACED ABOUT 14" TO 18" APART. ✓
Bridge, Forward Bulkhead ...	1 HINGED STEEL W.T. DOOR OPERATED FROM BOTH SIDES. ✓ B 1 PORTABLE STEEL PLATE SECURED BY HOOK BOLTS SPACED ABOUT 14" APART. ✓
Forecastle Bulkhead ...	2 HINGED STEEL W.T. DOORS OPERATED FROM BOTH SIDES. ✓
Exposed Machinery Casings on Freeboard or Raised Quarter Decks ...	NONE
Exposed Machinery Casings on Superstructure Decks ...	NO OPENINGS
Machinery Casings within Superstructures not fitted with Class I Closing Appliances ...	NONE.
PUMP ROOM ENTRANCES Deckhouses on Flush Deck Ships ...	1 HINGED STEEL W.T. DOOR IN EACH OPERATED FROM BOTH SIDES.

NICANTIA

A hand-drawn diagram of a ship's hull cross-section. The diagram shows a hull with a flat bottom and a curved upper section. A horizontal line represents the waterline. Above the waterline, there are two decks: the 'Superstructure Deck' and the 'Freeboard Deck'. The hull is shown with a rounded bow and a pointed stern. The diagram is drawn on a piece of paper with a vertical dashed line indicating the centerline.

ENGINE ROOM SKYLIGHT OF STEEL AND STRONGLY CONSTRUCTED. ✓
FUNNEL AND FIDDELY, VENTS OF EFFICIENT CONTRUCTION. ✓
FIDDELY GRATINGS PROTECTED BY HINGED STEEL COVERS. SECURED BY BUTTERFLY SCREWS.
ESCAPE HATCH (2) 18" x 18" WITH HINGED STEEL COVERS SECURED BY DOUBLE HANDED CLIPS.

NONE

ONE AT FORECASTLE FRONT BULKHEAD TO AUX. PUMP ROOM, STARD^O ONLY, WITH HINGED STEEL W.T. DOOR CLIPS. DOORWAY 4'-1" x 24", SILL 24". DOOR OPERATED FROM BOTH SIDES. ✓

ON ROOF DECK.	ON BRIDGED DECK.	ON FORECASTLE DECK.
11 @ 5" DIA WITH GOOSENECK HEAD ✓	7 @ 6" DIA. COAMINGS 30" x 30 COWL VENTS. ✓	2 @ 8" DIA. COAMINGS 36" x 30
23" ABOVE DECK TO OPENING		1 @ 12" DIA " 36" x 34 } COWL VENTS.
1 @ 6" DIA COAMING 30" x 30 } ✓	ON UPPER DECK.	6 @ 10" DIA. " 36" x 32 ✓
1 @ 10" DIA " 30" x 32 } COWL HEADS. ✓	4 @ 24" DIA. STRONGLY CONSTRUCTED VENTS	
2 @ 12" DIA " 30" x 34 } ✓	TO PUMP ROOMS, COAMINGS 18" x 3" ABOVE DECK.	
1 @ 4" DIA WITH GOOSENECK HEAD	EFFICIENTLY STAYED TO PUMP ROOM ENTRANCE	CLOSING APPLIANCES.
30" ABOVE DECK TO OPENING. ✓	HOUSE. COWL HEADS. ✓	24" VENTS FITTED WITH GASTIGHT FLAPS IN COAMING ✓
		OTHER COWL VENT COAMINGS CLOSED BY W.T. SCREW ✓
		DOWN PLUGS OR WOOD PLUGS, AND CANVAS COVERS;
		AND GOOSENECK VENTS BY WOOD PLUGS OR CANVAS COVERS

<u>ON POOP DECK.</u>	<u>ON UPPER DECK.</u>	<u>ON FORECASTLE DECK.</u>
1 @ 2" DIA, 5 @ 2 1/2" DIA, 3 @ 3" DIA	2 @ 4" DIA ABOUT 2'3" ABOVE DECK TO OPENING	1 @ 4" DIA WITH GOOSENECK HEAD
WITH GOOSENECK HEADS ABOUT 24"	EFFICIENTLY STAYED. ✓	18" ABOVE DECK TO OPENING.
ABOVE DECK TO OPENINGS.	2 @ 3" DIA ABOUT 7'-0" ABOVE DECK TO OPENING	2 @ 4" DIA WITH MUSHROOM HEADS
2 @ 4" DIA WITH MUSHROOM HEADS ABOUT	AND 2 @ 3" DIA ABOUT 7'-6" ABOVE DECK TO OPENING	23" ABOVE DECK TO OPENING.
24" ABOVE DECK TO OPENINGS.	EFFICIENTLY STAYED. ✓	
✓ CLOSING APPLIANCES.	WIFE GAUZE COVERS FITTED AT MUSHROOM HEADS, WOOD PLUGS OF CANVAS COVERS	
	AT GOOSENECK HEADS. ✓	

NONE.

SCUPPERS AND DISCHARGES FROM SPACES IN POOP LED TO STORM VALVES ON SHIP'S SIDE, SECOND AUTOMATIC NON-RETURN VALVES
FITTED IN ACCESSIBLE POSITION ABOVE STORM VALVES. ALL DISCHARGE BELOW FREEBOARD DECK.

SCUPPERS AND DISCHARGES FROM POOP DECK AND SPACES ABOVE LED TO STORM VALVES ON SHIP'S SIDE, ALL DISCHARGE ABOVE FREEBOARD DECK.

SCUPPERS AND DISCHARGES FROM BRIDGE DECK AND SPACES ABOVE LED TO STORM VALVES ON SHIP'S SIDE, ALL DISCHARGE ABOVE FREEBOARD DECK.

SCUPPERS FROM FORECASTLE DECK FITTED WITH SCREW CAP ON INBOARD END, EACH DISCHARGE BELOW FREEBOARD DECK.

POOP SIDES.	10" AND 12" DIA OF SUBSTANTIAL CONSTRUCTION, AND FITTED WITH DEADLIGHTS.	✓
BRIDGE SIDES.	8" " " " " " " " "	✓
FORECASTLE SIDES	8" " " " " " " " "	✓



AT FLOOR, BRIDGE & FORECASTLE DECKS. 3'-6" HIGH, 3 RAILS, STANCHIONS SPACED ABOUT 4'-9" APART. ✓

AT FREEBOARD DECK: OPEN RAILS " " " " " " " " " "

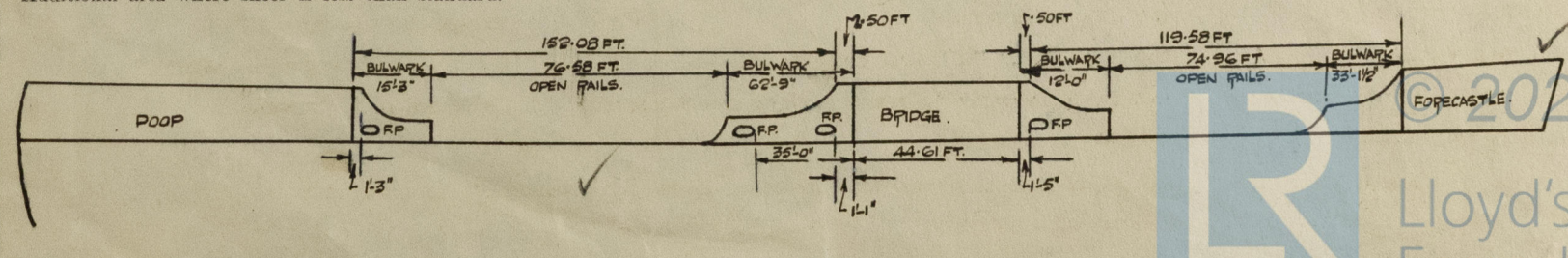
(SEE SKETCH BELOW) BULWARKS 3'-6" HIGH, 30 THICK, 7" BA-PAI BAR, 6" BR STAYS ABOUT 6'-0" APART. ✓

SPECIALLY STAYED ADJACENT TO EJECTION ENDS.

Particulars of Gangways, Ladders, etc.:— HEIGHT 7'-6" WIDTH AT TOP 3'-3" AND AT BOTTOM 4'-9". SUPPORTS 4'-4" x 40 ANGLES SPACED ABOUT 7'-6" APART, AND EACH WITH 3'-3" x 40 ANGLE DIAGONAL TIES AND BRACKETS TOP AND BOTTOM; SIDE DIAGONALS 3'-6" x 40 ANGLE FITTED IN ALTERNATE BAYS AND BRACKETED TOP AND BOTTOM; SIDES OF PLATFORM OF 5'-3" x 40 BA; PLATFORM OF WOOD 3" THICK; GUARD STANCHIONS 3'-6" HIGH AND SPACED ABOUT 5'-0" APART, 2 RAILS IN HEIGHT.

Particulars of Freeing Arrangements.						
	Length of Bulwark	Height of Bulwark	Size of Freeing Ports	Number each side	Area each side	Rule area each side
After Well	70'-0" 152'-08"	3'-6"	 3'-0" x 1'-3"	3	1024 SQ. FT. AND OPEN RAILS.	TANKER.
Forward Well	45'-1/2" 117'-58"	3'-6"	 3'-0" x 1'-3"	1	341 SQ. FT. AND OPEN RAILS.	TANKER. ✓

Additional area where sheer is less than standard.



PARTICULARS OF PROTECTION TO OPENINGS, ETC.

HATCHWAYS ON FREEBOARD AND SUPERSTRUCTURE DECKS.										
Description of Hatchway	CARGO TANKS	COFFERDAMS	OIL FUEL BUNKERS	ON ROOF DK TO STORES	ON ROOF DK TO ROPE STORE	FOR CARGO SPACE	ON FORECASTLE DECK	ON FB ^D DECK
Dimensions of Hatchway	4'6" x 3'6" (27 OFF)	F & A 1'6" x 2'0" (6 OFF)	1'6" x 2'0" (2 OFF)	3'3" x 2'6" (1 OFF)	1'3" DIA. (1 OFF)	8'0" x 10'0" (1 OFF)	2'6" x 2'6" (1 OFF)	2'6" x 2'6" 1 OFF
COAMINGS	Height above Deck	...	30" ✓	40	7'	16 1/2"	6'3" x 38 BULB ANGLE	34"	2' x 3 1/2" x 42 BULB ANGLE	2' x 3 1/2" x 44 BULB ANGLE
	Thickness	{ Sides	40	40	40	40	✓	44	✓	✓
	Stiffeners	{ Ends	✓	✓	✓	✓	✓	✓	✓	✓
	Brackets, Stays	...	✓	COAMING OF INVERTED TYPE WELDED TO DK.	COAMING OF INVERTED TYPE WELDED TO DECK.	✓	✓	6' x 3" B.A.	✓	✓
HATCH BEAMS	Number	...	WITH 50 THK HINGED STEEL COVER MADE W.T. BY GREASY HEMP PACKING AND 14 BUTTERFLY SCREWS.	WITH 50 THK BOLTED STEEL COVER. BOLTS 3/4" DIA SPACED 3 1/4" APART.	WITH 50 THK BOLTED STEEL COVER. BOLTS 3/4" DIA SPACED 3 1/4" APART.	WITH 40 THK HINGED STEEL COVER MADE W.T. BY GREASY HEMP PACKING AND 8 BUTTERFLY SCREWS.	WITH 40 THK HINGED STEEL COVER MADE W.T. BY GREASY HEMP PACKING AND 4 BUTTERFLY SCREWS.	WITH 40 THK STEEL COVER STIFFENED BY 4' x 3' x 40 ANGLES SPACED ABOUT 30" APART. COVER HINGED AND MADE W.T. BY GREASY	EACH WITH 40 THK HINGED STEEL COVER MADE W.T. BY GREASY HEMP PACKING AND 8 BUTTERFLY SCREWS.	
	Spacing	...				✓	✓	HEMP & PACKING & 22 BUTTERFLY SCREWS.		
	Unsupported Lengths	...						W.T. BOLTED COVER ON OVAL ACCESS MANHOLE ON MAIN COVER.		
	Scantling and Sketch	...						HATCHWAY TRUNKED TO FREEBOARD DECK. ✓		
FORE AND AFTERS	Bearing Surface	...	/							
	Number	...								
	Spacing	...								
	Unsupported Lengths	...								
HATCH COVERS	Material	...	/							
	Thickness	...	/							
	How fitted	...	/							
	Bearing Surface	...	/							
Spacing of Cleats	/							
Number of Tarpaulins	/							

*Are wood fore and afters steel shod at all bearing surfaces ?
 Are battens and wedges efficient and in good condition ?
 Are tarpaulins in good condition and in accordance with rule requirements ?
 Are lashings provided in accordance with rule requirements ?

Particulars of any special features:—

Endorsement at first survey and at surveys for renewal of Certificate:—

The fittings and appliances are in accordance with the particulars shown on this form (or as now modified) and are in good condition.

