

21.12.14

# — STERN & RUDDER. —

## — FRAMES —

— No 419 —



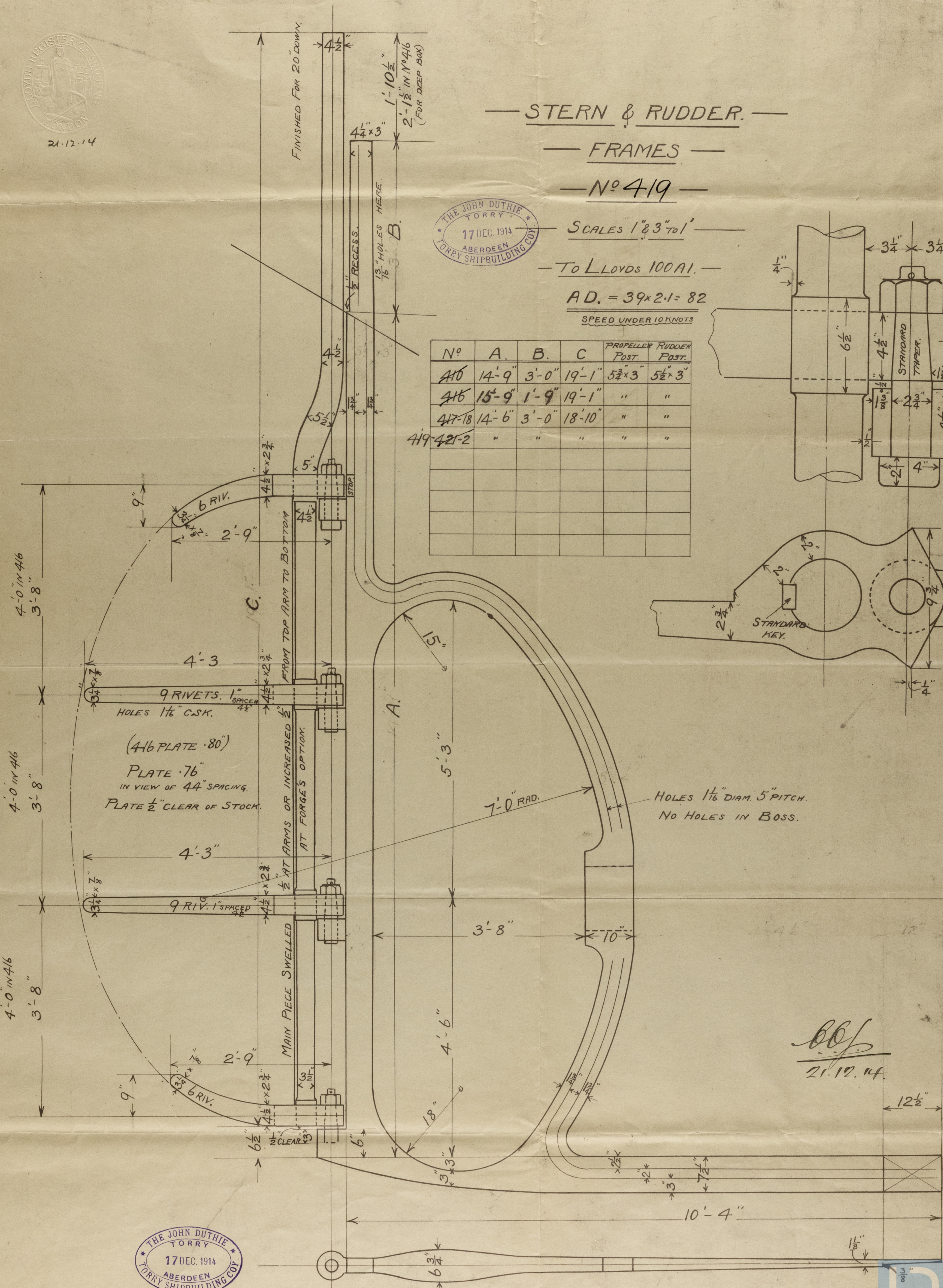
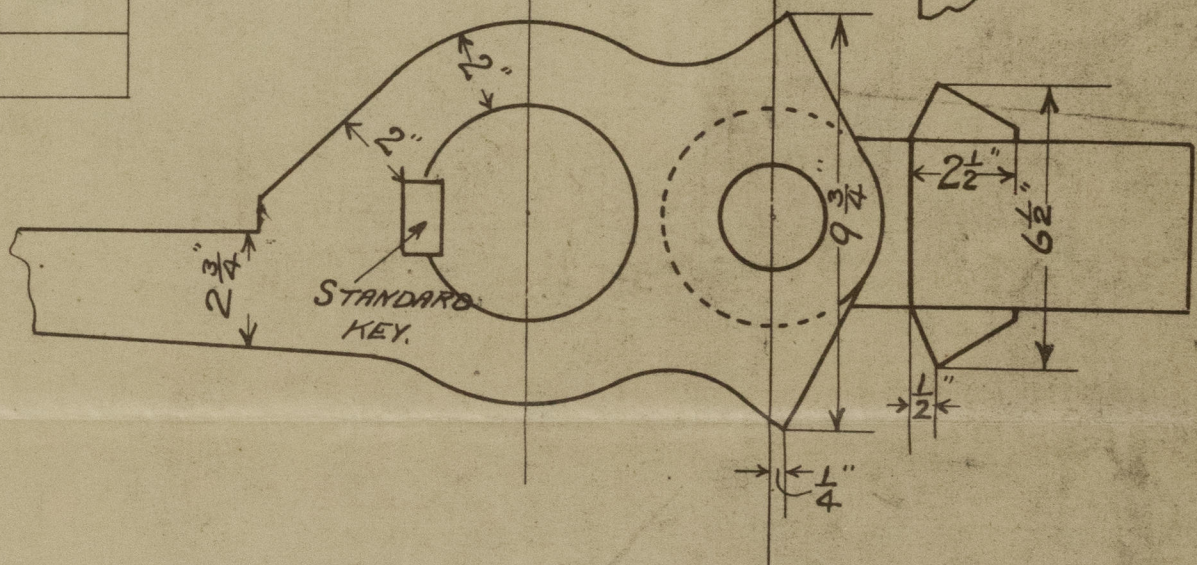
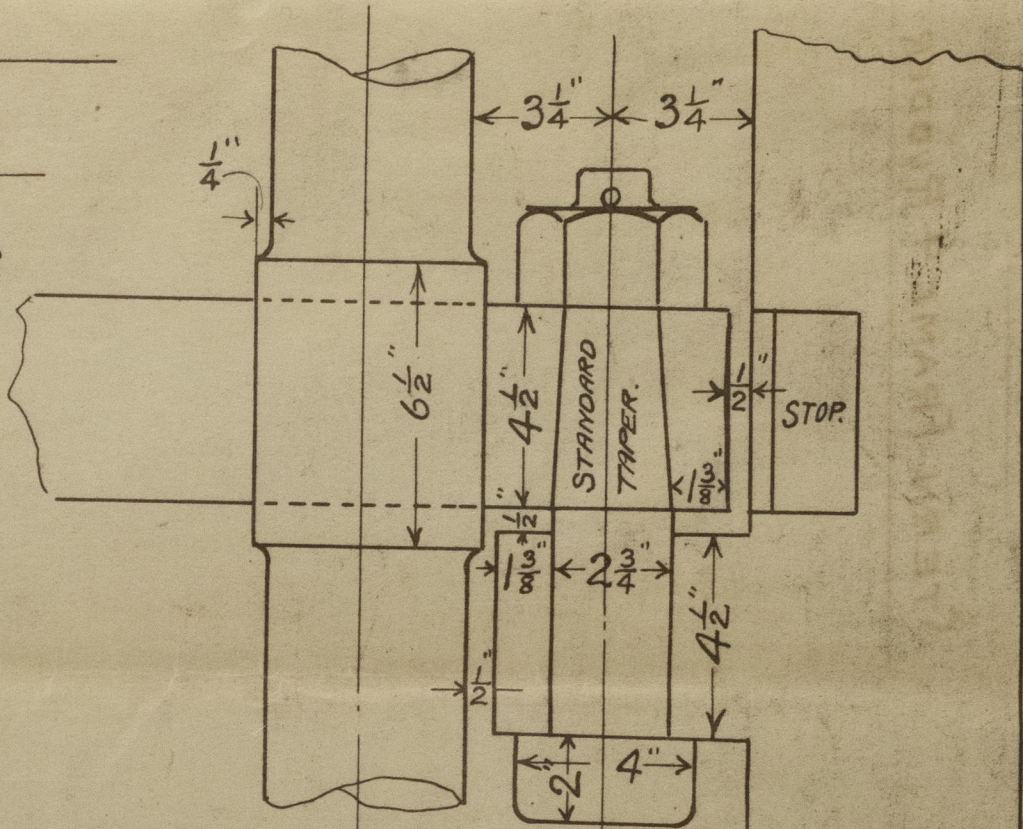
SCALES 1" & 3" TO 1'

— TO LLOYDS 100A1. —

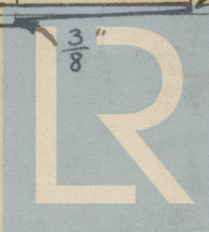
AD. = 39 x 2.1 = 82

SPEED UNDER 10 KNOTS

Nº	A.	B.	C.	PROPELLER POST.	RUDDER POST.
410	14'-9"	3'-0"	19'-1"	5 7/8" x 3"	5 1/2" x 3"
416	15'-9"	1'-9"	19'-1"	"	"
417-18	14'-6"	3'-0"	18'-10"	"	"
419-421-2	"	"	"	"	"



Nºs 410, 416, 417-18, 419 - 421-2



© 2020 Lloyd's Register Foundation

5100-1/1/100-2/1900

JOHN DUTHIE TORRY. S.B.G.

*Stern frame & Rudder*  
S.S. N<sup>o</sup> 419

STERN FRAME & RUDDER

419 / S.S. "Vale of Forth"  
abn & L. Rpt No 11819.