

SHIP NO 442.

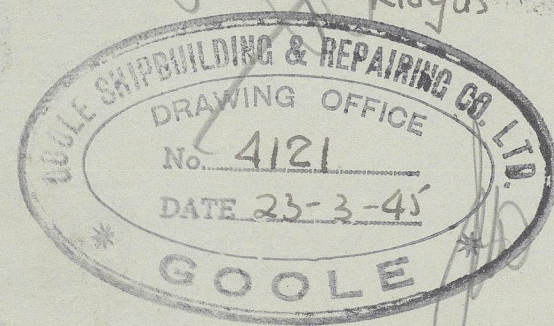
# MIDSHIP SECTION

DIMENSIONS: 200'-0" B.P. x 31'-3" MLD. x 13'-11" MLD. - 5'-0" R.Q.D.

TO CLASS LLOYDS 100 A1

BUTTS OF KEEL & DECK ELECTRICALLY WELDED

SCALE: 1/2" = 1 FOOT



3 BOWERS ANCHORS 8 210 FATHOMS  
100 FATHOMS 100' STW LINK CHAIN CABLE TO BE  
SUPPLIED IF OBTAINABLE

## EQUIPMENT

- 2 BOWER STOCKLESS ANCHORS EACH 2 1/4 CWTs.
- 1 STREAM ANCHOR 5 1/4 CWTs. BY STOCK
- 100 FATHOMS 100' STW LINK CHAIN CABLE.
- 60 FATHOMS 3 1/4" 6x12 FSW STREAM LINE
- 90 FATHOMS 3" 6x12 FSW TONLINE
- 90 FATHOMS 6" CIRC HEMP HAWPER
- 90 FATHOMS 5" CIRC HEMP WARP

UNDER  
EMERGENCY  
REGULATIONS  
*See Letter*

## EQUIPMENT NUMBER

L(B+D) = 200 (31.25 + 13.92)	=	9034.0
RAISED QUARTER DECK 34.5 x 5	=	672.5
FORECASTLE 18.0 x 7.75	=	94.5
AFT DECKHOUSE 51.33 x 7.50	=	179.655
MIDSHIP DECKHOUSE 15.33 x 7.50	=	53.655
DECKHOUSE ON BRIDGE 12.6 x 7.50	=	43.75
		10078.06

## LLOYDS NUMERALS

LENGTH B.P. = 200.0' + CRUISER STERN 6.5' = 206.5' EXTREME LENGTH

96% EXTREME LENGTH = 198.24'

L = 200.0'

B = 31.25'

D TO UPPER DECK = 13.92'

D TO RAISED QUARTER DECK = 10.92'

d TO UPPER DECK = 11.38' + 23 FOR LEVEL BUTTS = 11.6

d TO RAISED QUARTER DECK = 10.38' + 23 = 10.6

d AT 1/2 L FORD = 12.625' + 23 = 12.85

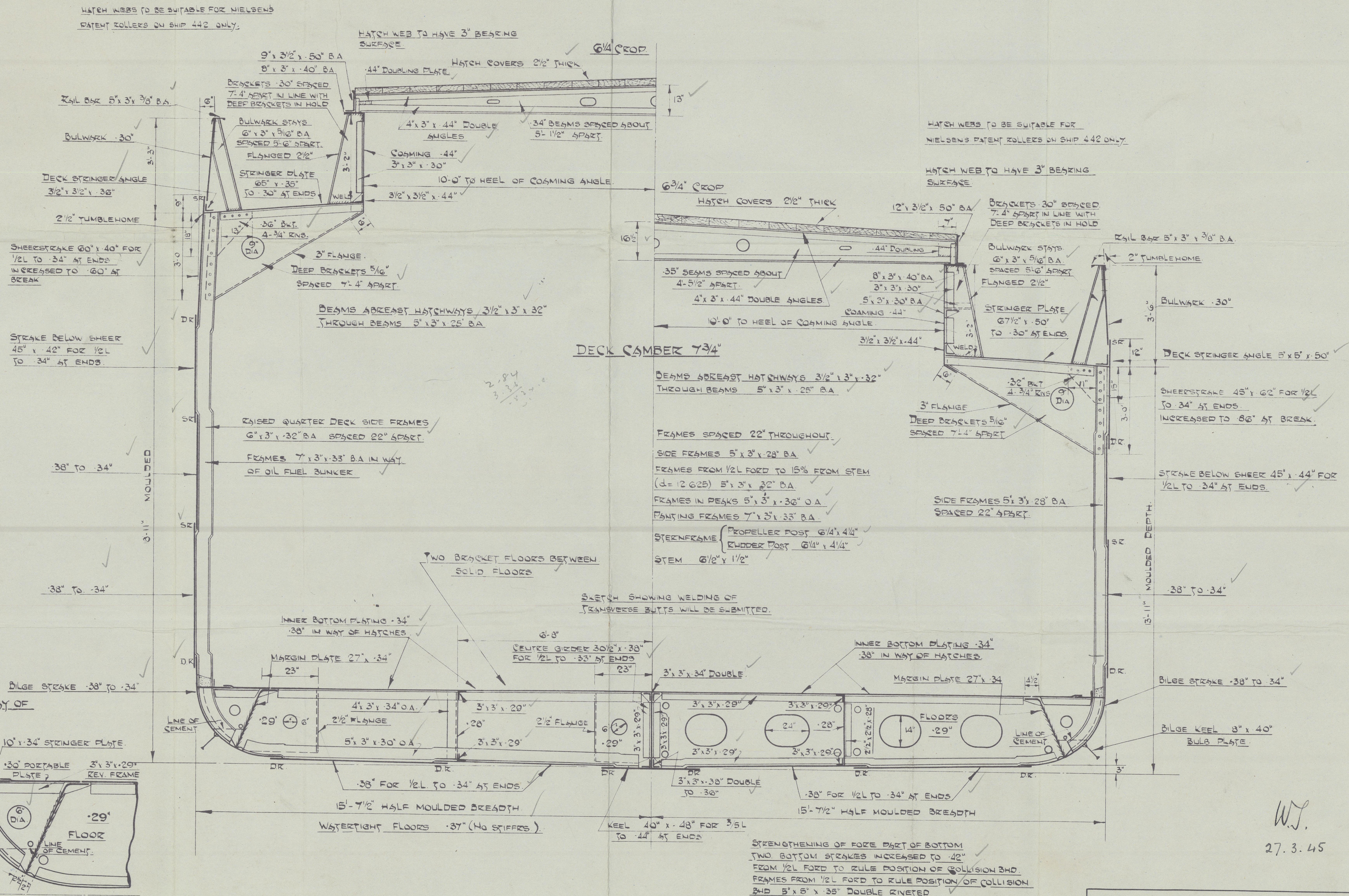
d FOR PAINTING = 14.46'

L x D = 200' x 13.92' = 2784'

L(B+D) = 200 x (31.25 + 13.92) = 9034'

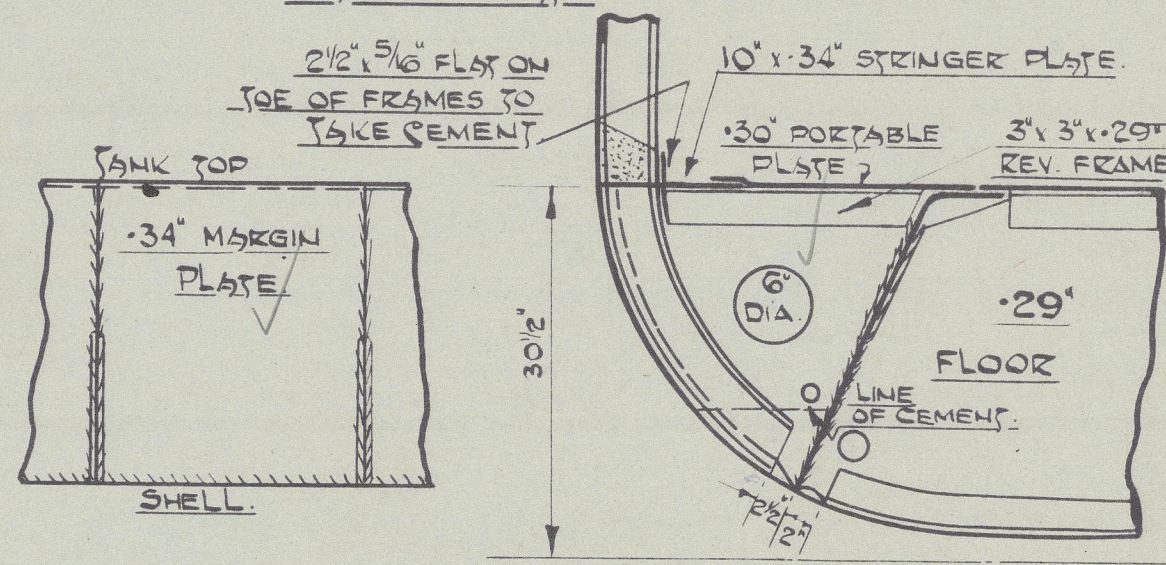
B TO UPPER DECK =  $\frac{200}{13.92} = 14.366'$

B TO R.Q.D. =  $\frac{200}{13.92} = 10.57'$



## DETAIL OF STIFFENING IN WAY OF

### MARGIN PLATE



## HALF SECTION AT RAISED QUARTER DECK

## HALF SECTION AT UPPER DECK

27.3.45



GOOLE S.B. & R. CO.

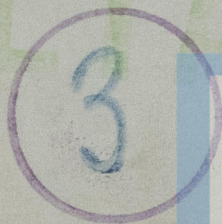
YARD N° 442.

MIDSHIP SECTION

"CATO"



RETAIN



© 2020

Lloyd's Register

003154-003161-0141  
Foundation