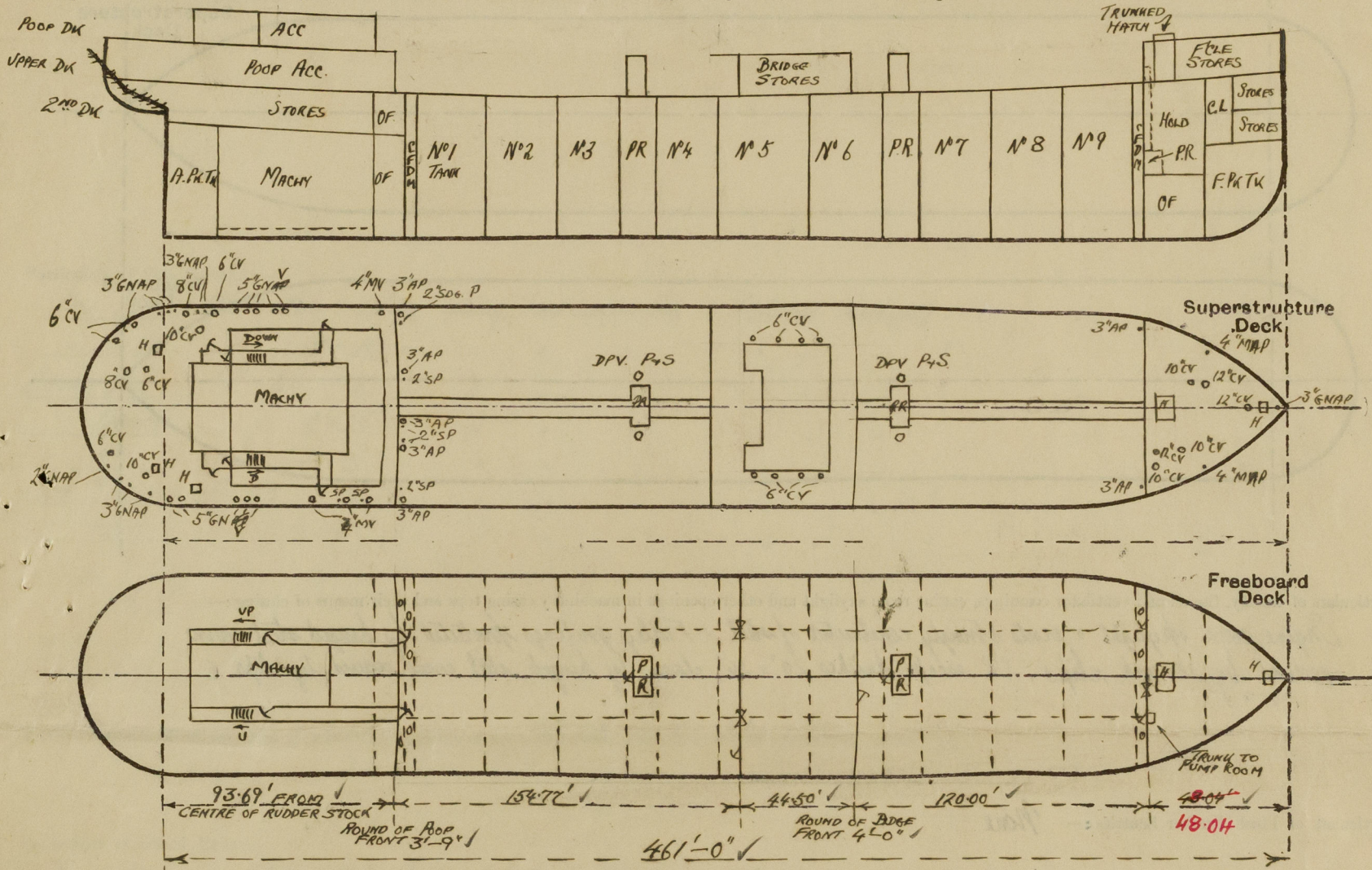


Lloyd's Register of Shipping.
SURVEYS FOR FREEBOARD.
(CONDITIONS OF ASSIGNMENT.)

Ship's Name **NEAERA** Port of Survey **NEWCASTLE-ON-TYNE**
Official Number **180821** Surveyor's Signature **Al Hunter**
Nationality and Port of Registry **BRITISH LONDON** Date of Survey **DURING CONSTRUCTION. 1945/46**

Disposition and dimensions of superstructures, trunks, deckhouses and machinery casings to be inserted in the diagrams and tabular statement:—



Particulars of Superstructures, Trunks, Casings, Deckhouses.

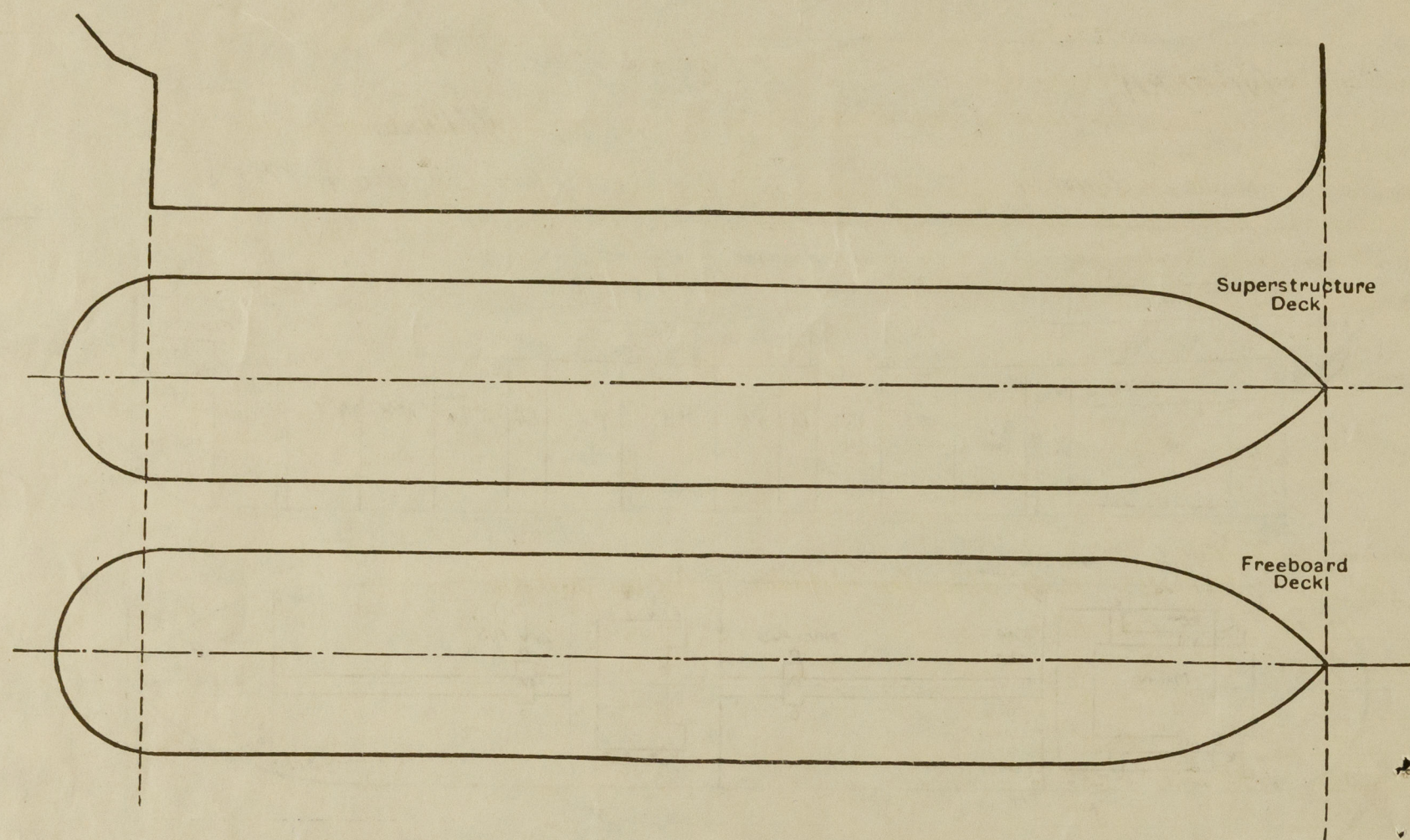
	Coaming INS	Plating INS	Stiffeners INS	Spacing INS	End Attachments of Stiffeners	Size of Openings	Height of Sills	Height of Casings
Poop Bulkhead ...	—	.44 ✓	1/4 x 4 1/2 x 40 BA ✓	ABOUT 30" ✓	TOP:— LUGS BTM:— BRACKETS	2 @ 5'0" x 2'6" ✓	18" ✓	7'6" ✓
Raised Quarter Deck Bulkhead ...	—	—	—	—	—	—	—	—
Bridge, After Bulkhead ...	—	.32 ✓	5 x 3 x 30 OA ✓	" 30" ✓	RIVETED THROUGH BOUNDARY ANGLES	2 @ 5'1" x 3'4" ✓ 1 @ 5'0" x 2'0" ✓	18" ✓ 20" ✓	7'6" ✓
Bridge, Forward Bulkhead ...	—	.44 ✓	9 x 3 1/2 x 42 BA ✓	" 33" ✓	BUTS TOP & BTM.	1 @ 5'0" x 2'6" ✓	19" ✓	7'6" ✓
Forecastle Bulkhead ...	—	.32 ✓	4 x 3 x 34 OA ✓	" 30" ✓	RIVETED THROUGH BOUNDARY ANGLES	1 @ 5'0" x 4'0" ✓ 1 @ 5'0" x 2'6" ✓ 1 @ 3'8" x 2'0" ✓	24" ✓ 18" ✓ 24" ✓	7'6" ✓
Trunk, Aft ...	—	—	—	—	—	—	—	—
Trunk, Forward ...	—	—	—	—	—	—	—	—
Exposed Machinery Casings on Freeboard or Raised Quarter Decks ...	—	—	—	—	—	—	—	—
Exposed Machinery Casings on Superstructure Decks34 ✓	30 ✓	3 x 3 x 30 OA ✓	30 3/4" ✓	BUTS AT TOP. STIFFENERS CONT. BELOW POOP DK.	5'0" x 2'4" ✓	21" ✓	7'6" ✓
Machinery Casings within Superstructures not fitted with Class I Closing Appliances ...	—	—	—	—	—	—	—	—
ENTRANCES TO MAIN PUMP ROOMS	—	.40 FRONT & SIDES 6 x 3 x 36 BA ✓	30 / 33	30 / 33	TOP:— BUTS	—	—	—
Deckhouses on Flush Deck Ships ...	—	.30 AFT ✓	4 x 3 x 32 OA ✓	ABOUT 30" ✓	BTM:— LUGS	4'0" x 2'3" ✓	24" ✓	7'6" ✓

Particulars of Closing Appliances (state if capable of being manipulated from both sides).

Poop Bulkhead ...	2 hinged steel W.T. doors closed by clips manipulated both sides ✓
Raised Quarter Deck Bulkhead ...	1 hinged steel W.T. door operated both sides ✓
Bridge, After Bulkhead ...	2 portable steel plates secured by hook bolts spaced 18" ✓
Bridge, Forward Bulkhead ...	1 hinged steel W.T. door closed by clips manipulated both sides ✓
Forecastle Bulkhead ...	1 portable steel plate secured by hook bolts spaced 18" ✓
Exposed Machinery Casings on Freeboard or Raised Quarter Decks ...	1 hinged steel W.T. door to Fbk closed by clips manipulated both sides ✓
Exposed Machinery Casings on Superstructure Decks ...	" " " " auxiliary pump room ✓
Machinery Casings within Superstructures not fitted with Class I Closing Appliances ...	Hinged wood doors 2" thick. Locks and handles. Manipulated both sides ✓
ENTRANCES TO MAIN PUMP ROOMS	Hinged steel W.T. doors. Closed by clips manipulated both sides ✓
Deckhouses on Flush Deck Ships ...	

PARTICULARS OF PROTECTION TO OPENINGS, ETC.

The following diagrams should be used to indicate the positions of cargo and coaling hatchways, gangway, cargo and coaling ports, ventilators, companionways, etc., which would affect the seaworthiness of the ship:—



Particulars of fiddle, funnel and ventilator coamings, engine room skylight and other openings in machinery casing tops and their means of closing:—
 Engine room skylight & vents strongly constructed of steel. ✓ Fiddle gratings protected by hinged steel covers secured by secured clips. ✓ 12 escape hatches 24" x 24" closed by hinged steel covers secured by clips. ✓

Particulars of Flush Bunker Scuttles:— None ✓

Particulars of Companionways:—

ON UPPER DECK At aft end of forecabin to Auxiliary Pump Room, opening in trunk 3'-8" x 2'-0" sill 24". Door:— steel w. t. hinged secured by clips operated both sides ✓
 ON POOP DECK To poop space & machinery space, opening 5'-0" x 2'-1", door, wood, hinged 2" thick, handles & locks operated both sides ✓

Particulars of Ventilators in exposed positions on freeboard and superstructure decks:—

ON POOP DECK Cowl VENTS. 2-10" dia, 30" high, 32" th. ✓ 2-8" dia 30" high 32" th. ✓ 5-6" dia 30" high 30" th. ✓
 MUSHROOM " 4-4" " 24" " ✓
 C.I. ROSENECK " 10-5" " 30" " ✓
 BRIDGE DECK Cowl VENTS 3-6" dia 30" high 30" th. ✓
 FOLE DECK " " 3-12" dia, 36" high, 34" th. ✓ 3-10" dia 36" high, 32" th. ✓
 UPPER DECK 4-24" dia demich port ventilators, to pump rooms, efficiently supported ✓
 Wood plugs & canvas covers supplied for cowl vent. Coamings canvas covers supplied for goose neck vents. ✓

Particulars of Air Pipes in exposed positions on freeboard, raised quarter, or superstructure decks:—

POOP DECK C.I. forerunner 8-3" dia, 1-2" dia openings 24" above deck ✓
 UPPER " 4-3" dia " led 12" above 1st deck (2 off) & poop deck (2 off) efficiently supported ✓
 2-3" " mushroom head air pipes led 12" above poop deck ✓
 FOLE " 1-3" " C.I. forerunner, opening 18" above deck ✓
 2-4" " mushroom head air pipes opening 24" above deck ✓

Air pipes are closed by wood plugs and canvas covers.

Particulars of Gangway Cargo and Coaling Ports:— None ✓

Nealra.

Particulars of Scuppers and Sanitary Discharge Pipes:—

Scuppers & discharges from spaces in poop discharge through two non-return storm valves or one non return storm valve controlled from above poop deck ✓
 Bridge & forecabin space drain into upper deck through screwed holes with brass plugs attached by chain (2 1/2" dia) ✓
 Scuppers through sheetroake above upper deck 8" x 3" 10 P, 10 S. 4 pipe scuppers (2 P, 2 S) at poop front & bridge front through stringer & sheetroake ✓

Particulars of Side Scuttles:—

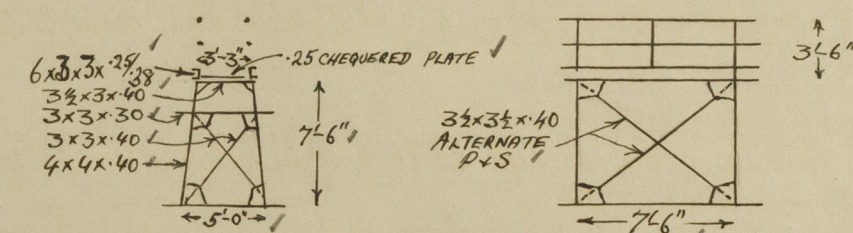
POOP SIDE 23 P, 20 S 10" dia strong brass construction. Cast iron deadlights ✓
 " FRONT 5'-10" " " " " " " ✓
 BRIDGE SIDE 4 P 5 S 8" " " " " " " ✓
 " FRONT 2-8" " " " " " " ✓
 " AFT. 2-8" " " " " " " ✓
 FOLE SIDE 4 P 4 S 8" " " " " " " ✓
 " FRONT 3-8" " " " " " " ✓

Vertical distance of Sill of lowest Side Scuttle above top of keel No side scuttles below freeboard deck. ✓

Particulars of Guard Rails:—

POOP, BRIDGE & FOLE 3'-6" high. 3 Rails 11mm diam spaced about 4'-9" (welded to deck) ✓
 Freeboard (upper) deck 3'-6" " 3 " " " 5'-0" " " ✓
 BULKHEADS (see sketch) 3'-6" " 30" thick 7" BA rail bar 6" BA stays spaced about 6'-0". Extra stiffening arranged in vicinity of erection bulkheads ✓

Particulars of Gangways, Lifelines, etc.:—



Particulars of Freeing Arrangements.						
	Length of Bulwark	Height of Bulwark	Size of Freeing Ports	Number each side	Area each side	Rule area each side
After Well ...	79'-0" 154.77	3'-5"	30' x 1.25'	3	10.25 sq. ft. and open rails	
Forward Well ...	46'-0" 120.00	3'-5"	30' x 1.25'	1	34.17 sq. ft. and open rails	
State position of each freeing port ... (F. and A. position and height above deck edge) { After Well:— Forward Well:— } SEE SKETCH.						
State whether the freeing ports are fitted with shutters, bars, or rails, and give particulars of such:— 3 VERTICAL BARS AT EACH PORT SPACED 9" BOTTOM EDGE OF PORTS 15" ABOVE DECK						
Additional area where sheer is less than standard.						

© 2020

Lloyd's Register Foundation

0185 2/2

PARTICULARS OF PROTECTION TO OPENINGS, ETC.

HATCHWAYS ON FREEBOARD AND SUPERSTRUCTURE DECKS.									
<div> <div>ON UPPER DECK</div> <div>ON FLE DECK</div> <div>ON POOP</div> </div>									
Description of Hatchway	TO CARGO TANKS CIRCULAR RT OFF	TO COFFERDAMS 6 OFF.	TO O.F. BUNKERS 2 OFF	IN FLE TO F.P.K. STRAES	TO CARGO HOLD TRUNKED TO UPPER DK	TO FLE STRAES	TO STRAES 1P. 1S	TO STRAES 1S	
Dimensions of Hatchway	4'-0" Dia	1'-6" x 2'-0"		1'-6" x 6"	8'-0" x 8'-0"	1'-4" x 1'-10"	1'-4" x 1'-10"	2'-3" x 2'-3"	
COAMINGS	Height above Deck ... 10" ✓ Thickness ... 75" ✓ Stiffeners ... Brackets, Stays ...	7" ✓ INVERTED ANGLES WELDED TO DECK	DITTO ✓	9x3 1/2 x .42 BA ✓	2'-10" ✓ .40 ✓ 6x3x38 BA HORIZONTAL NONE	6" ✓ .40 ✓ .40 ✓ NONE	6" ✓ .40 ✓ .40 ✓ do.	10" ✓ .40 ✓ .40 ✓ do	
HATCH BEAMS	Number ... Spacing ... Scantling and Sketch ... Bearing Surface ...	NONE	NONE	NONE	NONE	NONE	NONE	NONE	
FORE AND AFTERS	Number ... Spacing ... Unsupported Lengths ... Scantling* and Sketch ... Bearing Surface ...	NONE	NONE	NONE	NONE	NONE	NONE	NONE	
HATCH COVERS	Material ... STEEL ✓ Thickness ... 42 ✓ How fitted ... HINGED O.T. ✓ Bearing Surface ... CLIPS	STEEL ✓ 50 ✓ BOLTED 3/4 @ 3 1/4 ✓	DITTO	STEEL ✓ 40 ✓ HINGED W.T. CLIPS	STEEL ✓ 40 ✓ HINGED W.T. CLIPS SPACED 18" BOLTED W.T. HATCH ON SID 2 1/2' x 3'-2"	STEEL ✓ 40 ✓ HINGED W.T. CLIPS	Do ✓	Do ✓	
Spacing of Cleats									
Number of Taraulins									
<p>*Are wood fore and afters steel shod at all bearing surfaces?</p> <p>Are battens and wedges efficient and in good condition?</p> <p>Are tarpaulins in good condition and in accordance with rule requirements?</p> <p>Are lashings provided in accordance with rule requirements?</p>									

Particulars of any special features:—

Endorsement at first survey and at surveys for renewal of Certificate:—

The fittings and appliances are in accordance with the particulars shown on this form (or as now modified) and are in good condition.



© 2020

Lloyd's Register
Foundation