

Lloyd's Register of Shipping.

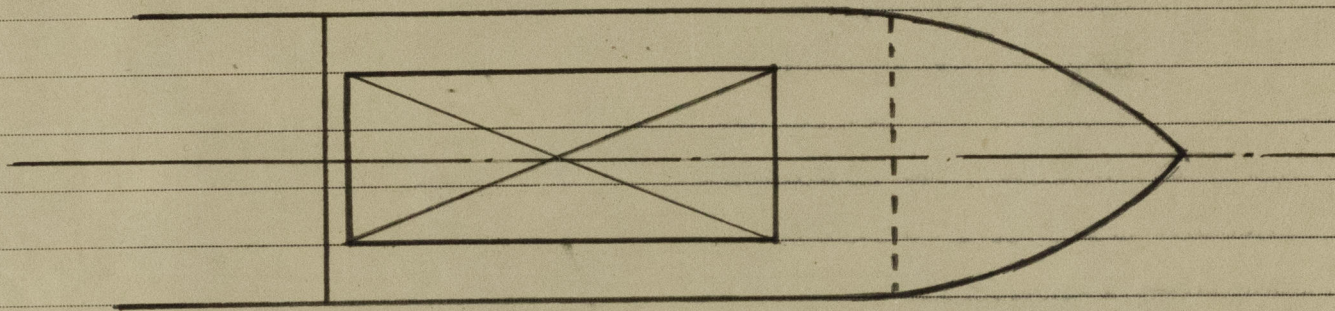
Ship's Name

"THIRD"

Official No. 126961.

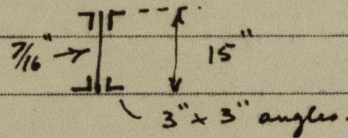
Memorandum of alterations reported since ship was surveyed for assignment of Load Lines
in 8th July 1946.

The forward opool hatchway has now been efficiently
decked in and the No 2 Main hatchway
extended forward to form one large single
hatchway.



PLAN OF NEW MAIN HATCHWAY.

Description of Hatchway.	-	Forward well deck Main Hatchway.
Dimensions of Hatchway.	-	45'-6" x 14'-0".
Cannings	Ht. above deck.	30"
	Thickness of Sides	$\frac{1}{2}$ "
	Ends	$\frac{7}{16}$ "
	Stiffeners	7" x 3 $\frac{1}{2}$ " x .35" B.A.
	Brackets, Stays	Fitted
Hatch Beams.	Number	8
	Spacing.	Even
	Scantling	
	Bearing Surface	3 $\frac{1}{2}$ "
Fore & Aft		None
Hatch Covers.	Material.	Spruce
	Thickness.	2 $\frac{1}{2}$ "
	How fitted.	Fore & aft.
	Bearing Surface.	3 $\frac{1}{2}$ "
Spacing of cleats.		24"
Number of Tarpaulins.		Two



Battens & wedges are efficient and in good condition.

Tarpaulins " " " " " and in accordance with Rule

lashings are provided in accordance with the Rules.