

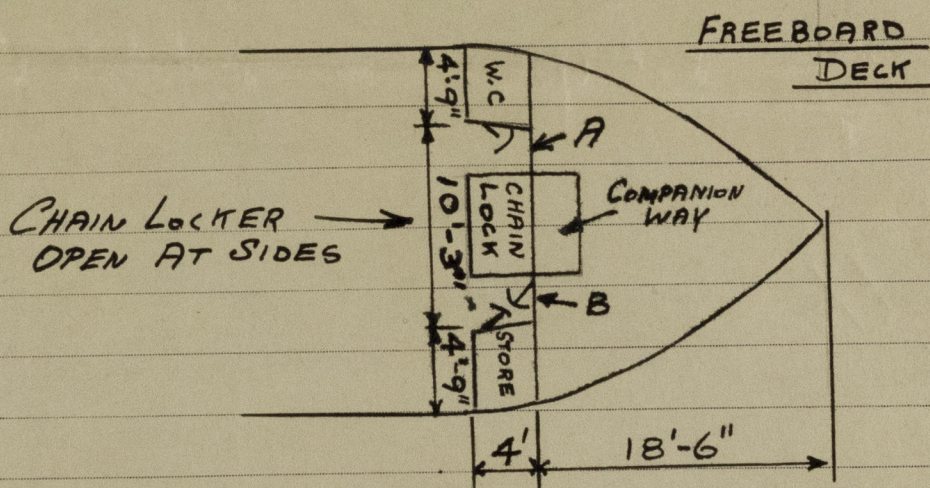
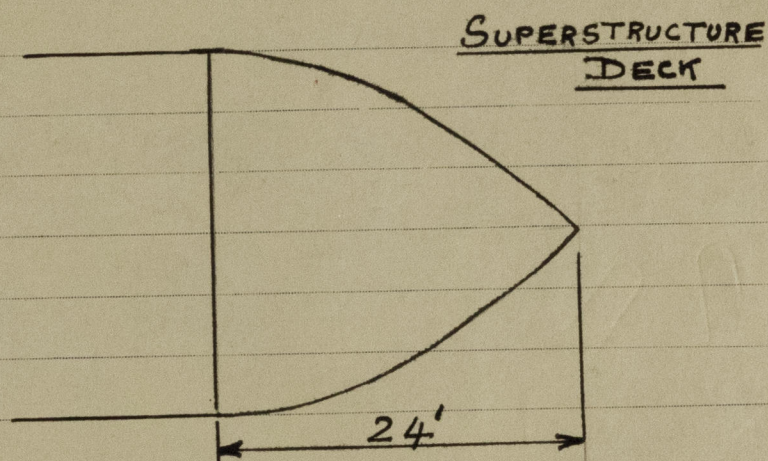
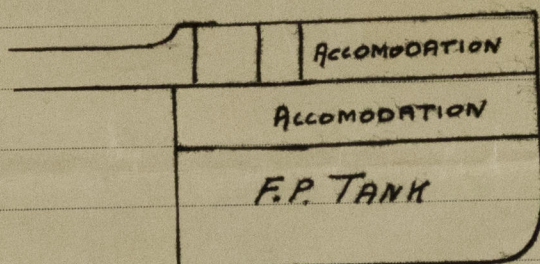
Lloyd's Register of Shipping.

Ship's Name

"CARLINGFORD"

Official No. 126961

Memorandum of alterations reported since ship was surveyed for assignment of Load Lines
in April 1934



At some previous date the forecastle has been closed by a riveted steel plate at "A" and a framework with strong hardwood door, operated both sides, at "B" with sill 24" high. The sill of the original Companion inside forecastle is 18" high but the door has been removed. The steelwork of the side houses and of the division bulkhead between Chain locker and Companionway is of substantial construction. Doors to side houses of strong hardwood, operated both sides.

John McAfee
6th Jan 1944