

# MIDSHIP SECTION STEEL SCREW TRAWLERS Nos 1169-1170-1171 & 1172.

168'-6" B.P. x 27'-6" MLD x 15'-0" MLD.  
TO CLASS 100.A.1. STM. TRAWLER

## NUMERALS

L x D -----2527  
L x (B+D)-----7161

## EQUIPMENT

1st. BOWER ANCHOR 10 1/4 CWTs - STOCKLESS  
2nd. " " 9 1/4 " " "  
KEDGE ANCHOR 4 " EX STOCK  
150 FMS 1 3/16" STUD LINK CABLE  
60 " 6" HAWSER  
60 " 5 1/2" WARP

## RIVETING

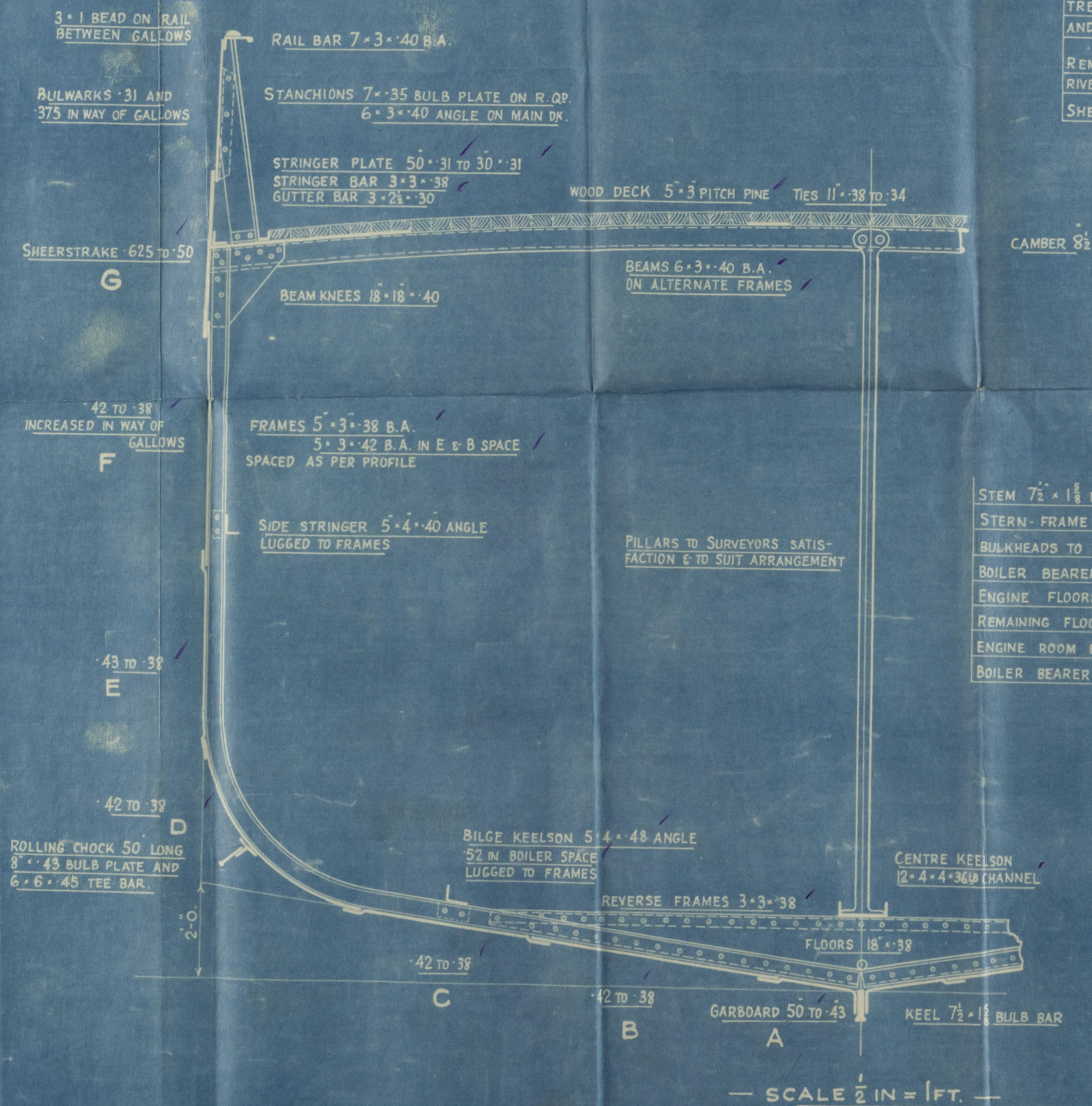
ALL LANDING EDGES TO BE DOUBLE RIVETTED  
EXCEPT TOP EDGE OF SHEERSTRAKE WHICH IS  
TO BE SINGLE RIVETTED

BUTTS OF GARBOARD AND SHEERSTRAKE  
STRAPPED AND TREBLE RIVETTED FOR 1/2 LENGTH  
STRAPPED AND DOUBLE RIVETTED AT ENDS

BUTTS OF E & F STRAKES OVERLAPPED AND  
TREBLE RIVETTED FOR 1/2 LENGTH, OVERLAPPED  
AND DOUBLE RIVETTED AT ENDS

REMAINDER OF BUTTS OVERLAPPED AND DOUBLE  
RIVETTED ALL FORE AND AFT.

SHELL RIVETS TO BE STEEL - REMAINDER IRON



STEM 7 1/2 x 1 1/2 BULB BAR  
STERN FRAME - AS SUBMITTED  
BULKHEADS TO SURVEYORS SATISFACTION  
BOILER BEARERS 625  
ENGINE FLOORS 50  
REMAINING FLOORS IN E & B SPACE 43  
ENGINE ROOM REVERSES 3 1/2 x 3 1/2 x 43 DOUBLE  
BOILER BEARER RADIUS BARS 5 x 5 x 50



© 2020  
Lloyd's Register  
Foundation

003106-003115-0241



N<sup>o</sup> 7169

Midship Section (as built)

Cochranes Sunk

S.S. "Lago Pallas"

HULL

47282.

RETAIN

© 2020

003106-003115-0241

Lloyd's Register  
Foundation



5000 .....  
10  
Messrs Lloyds Rof.  
Hull. FROM  
COCHRANE & SONS, LTD.  
SHIPBUILDERS, SELBY.  
DATE 8/10/36.

003106-00315-0241

1169  
X as lined



© 2020

Lloyd's Register  
Foundation