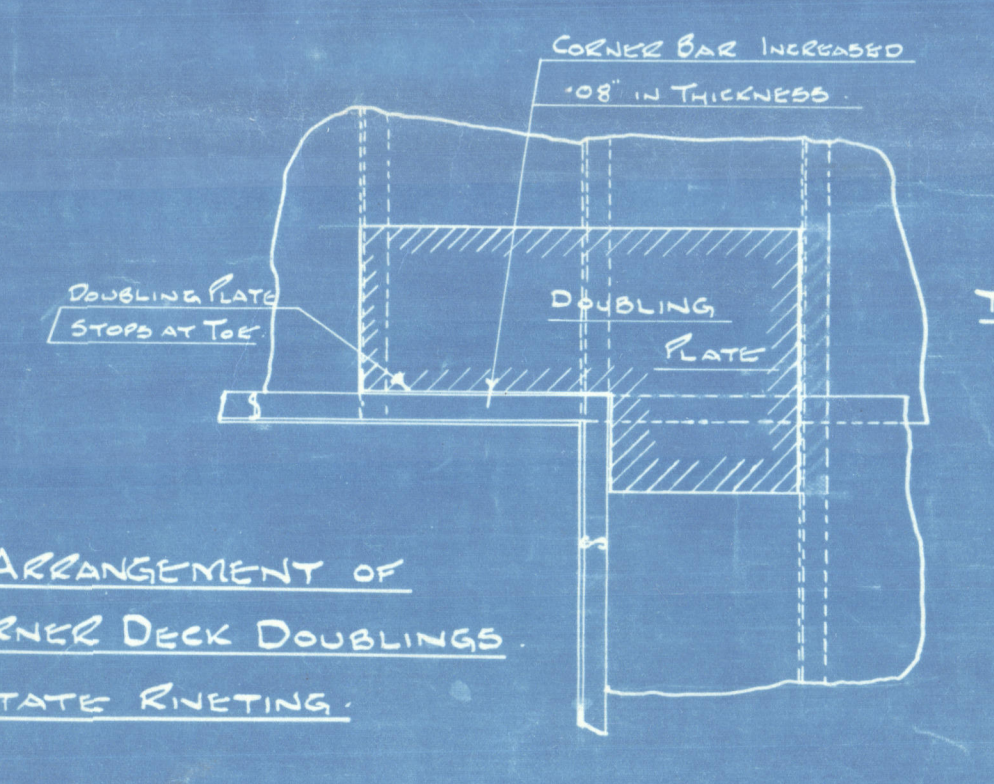


DIMENSIONS 368'-0" x 51'-2" M^{LD} x 27'-6 1/2" M^{LD}
TO LLOYD'S CLASS # 100 A1
SCALE 1/8" = ONE FOOT.

BULKHEAD SCANTLING										
BULKHEAD No.	Height of Bulk- head Above Main Line Above Deck	FLATING	CEAMING	STIFFENERS	STIFFENING STIFFENERS	ASSEMBLY TO DECK	KEELS	ANGLE TO TANK TOP	BULKHEADS	CEAMING BULKHEADS
12		30-34	42	8-3/8x36 4-3/8x36	24	3/8x36	3/8x42	—	20x42	5-3/8
65	26-5	31	39	12-3/8x45	30	—	3/8x36	3/8x45	30x40 3/8	8-3/8
32	26-4	30	—	—	—	3/8x36	3/8x36	—	—	—
81	25-2	—	45	—	—	—	—	—	—	—
127	28-3	32	40	8-3/8x36 4-3/8x36 2-3/8x36 2-3/8x36	—	3/8x36	3/8x45	—	—	3-3/8
152		26-38	44	—	24	3/8x36	3/8x42	18x36	30x40 3/8	6-3/8



© 2020
Lloyd's Register
Foundation

8

9 Beans



© 2020

Lloyd's Register
Foundation

Burnetts Land SB Co

N^o. 150 & 153

Nos. 156 & 158

AMENDED PROFILE DECKS

N^o. 156 & 158

~~Thomas Aetna~~

Hawdon



© 2020

Lloyd's Register
Foundation

003100-003105-0114