

S.S. URBINO

DETAIL OF BOX RUDDER & FIN PLATES ON RUDDER POST

Scale $\frac{1}{2} \text{ in } = 1 \text{ ft}$

THIS PLAN IS APPROXIMATE. ALL PARTICULARS TO BE LIFTED FROM SHIP.
 THIS PLAN TO BE SUBMITTED FOR CONSIDERATION BY THE BOARD.

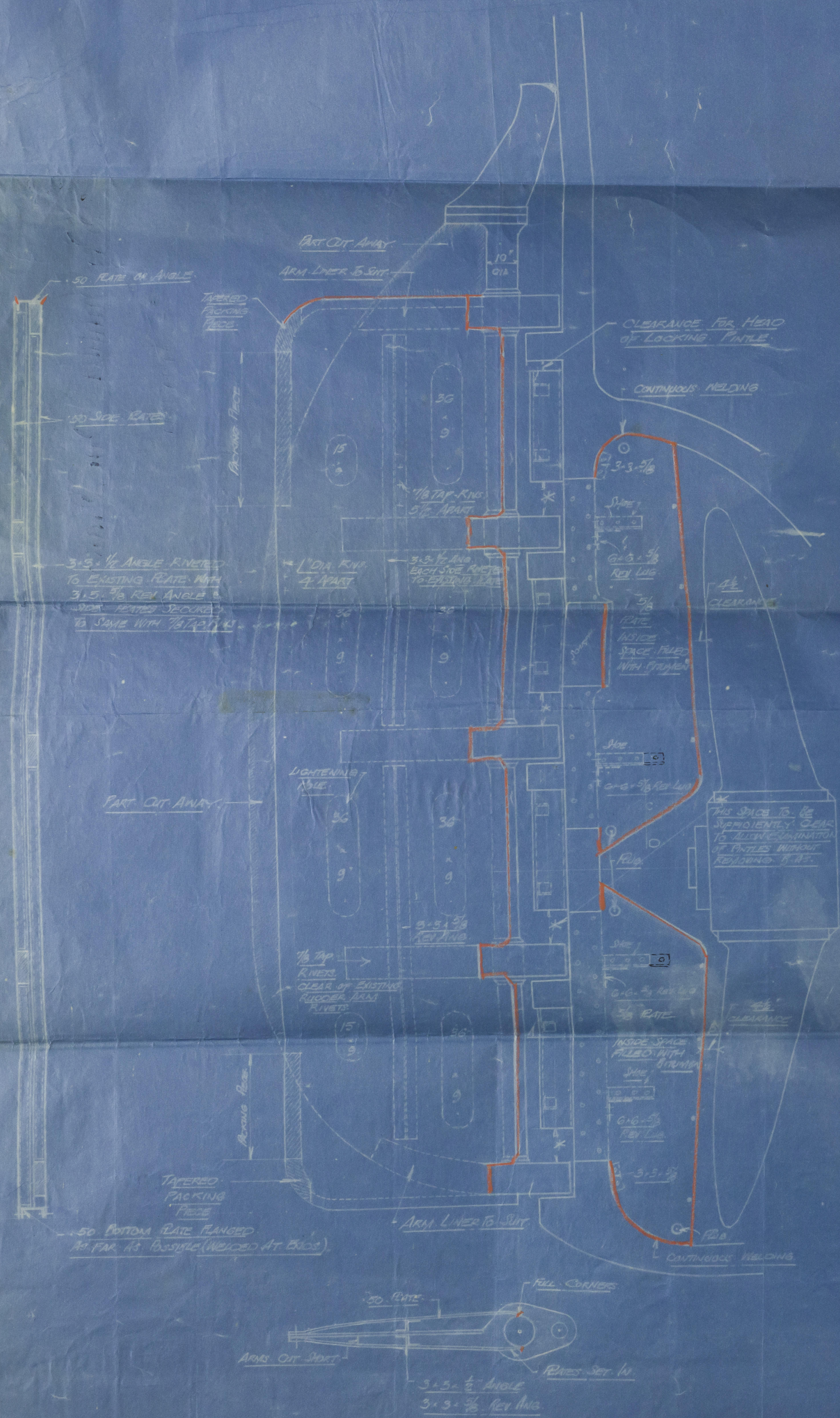
CONTINUOUS ELECTRIC WELDING SHOWN THUS
 BOX RUDDER & FIN PLATES TO BE COATED WITH "APEXIDE"

NOTES ON BOX RUDDER

EXISTING RUDDER PLATE TO BE RETAINED.
 ALL TOP RIVETS TO BE FLUSH & SPOT WELDED AFTER BEING DRIVEN HOME.
 RUDDER CAULKED W.T. & INSIDE SPACE FILLED WITH BITUMEN.
 EXISTING RUDDER PLATE TO BE BURNED OR CUT AWAY AS MUCH AS POSSIBLE TO REDUCE TOTAL WEIGHT & TO BE CHIPPED RUDDER TO BE TRIED OVER TO ANGLE OF 45° P.T.S. IN PRESENCE OF OWNERS REPRESENTATIVE TO ENSURE ALL CLEAR.

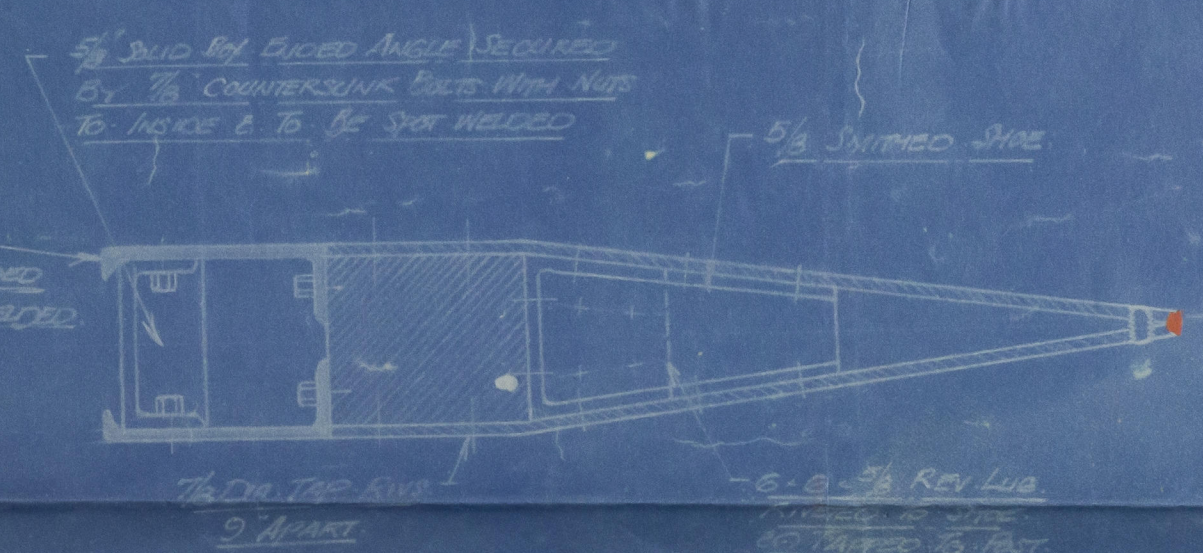
NOTES ON FIN PLATES

ALL TOP RIVETS TO BE FLUSH & SPOT WELDED AFTER BEING DRIVEN HOME.
 THE TAPPED HOLES IN THE RUDDER POST ARE NOT TO EXCEED 1" IN DEPTH.
 ALL HOLES MUST BE STAGGERED, NO TWO TAP HOLES ARE TO BE IN THE SAME PLATE.



SECTION THRU 'C D'

10" \times 3/4" \times 5/8" B.A. TAPPED TO POST WITH HEXAGONAL HEADED BOLTS. BOLTS TO BE SPOT WELDED.



SECTION THRU 'A B'

Scale $\frac{1}{2} \text{ in } = 1 \text{ ft}$

PLATES WELDED.
 SOLID AT POINT.
 SPIDS TAPPED TO BOTH PLATES. FLUSH CLENCHED & SPOT WELDED ABOUT 2" O' ANGLE.

19 DEC 1929
 J.L.A. 13
 19.12.29

THE LLOYD'S REGISTER OF SHIPPING
 16 DEC 1929
 LONDON

Box Number 11 in Plates.
of "Urbino"

18-12-28.

Box Number 11 in Plates
of "Urbino"

Sumner
Hull.

Urbino approved
by BC



© 2020

Lloyd's Register
Foundation



Webster

B.C



© 2020

Lloyd's Register
Foundation

003092-003099-0164