

2 - MAY 1952

Rpt. C. 11 (Contd.)

Index No.

LLOYD'S REGISTER OF SHIPPING

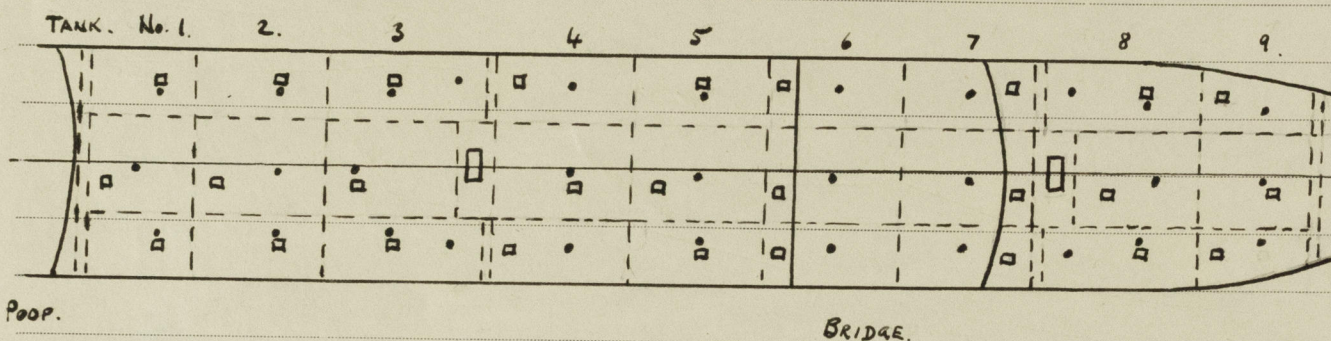
UNITED WITH THE BRITISH CORPORATION REGISTER

Ship's Name S.S. "EASEDALE"

Official No. 168256.

Memorandum of alterations reported since ship was surveyed for assignment of Load Lines in

Butterworth openings 12" dia. cut in upper deck in way of cargo tanks, closed by steel plates attached by studs. Positions relative to cargo hatches are shown in sketch below.



cargo tank hatch shown ☐
 Butterworth opening shown. •

Compensating doublers are fitted to openings as considered necessary.

26th. April 1952.

James. W. X. Keay
Newcastle-on-Tyne.

A copy of this report has been placed on board the vessel.