

Lloyd's Register of Shipping.

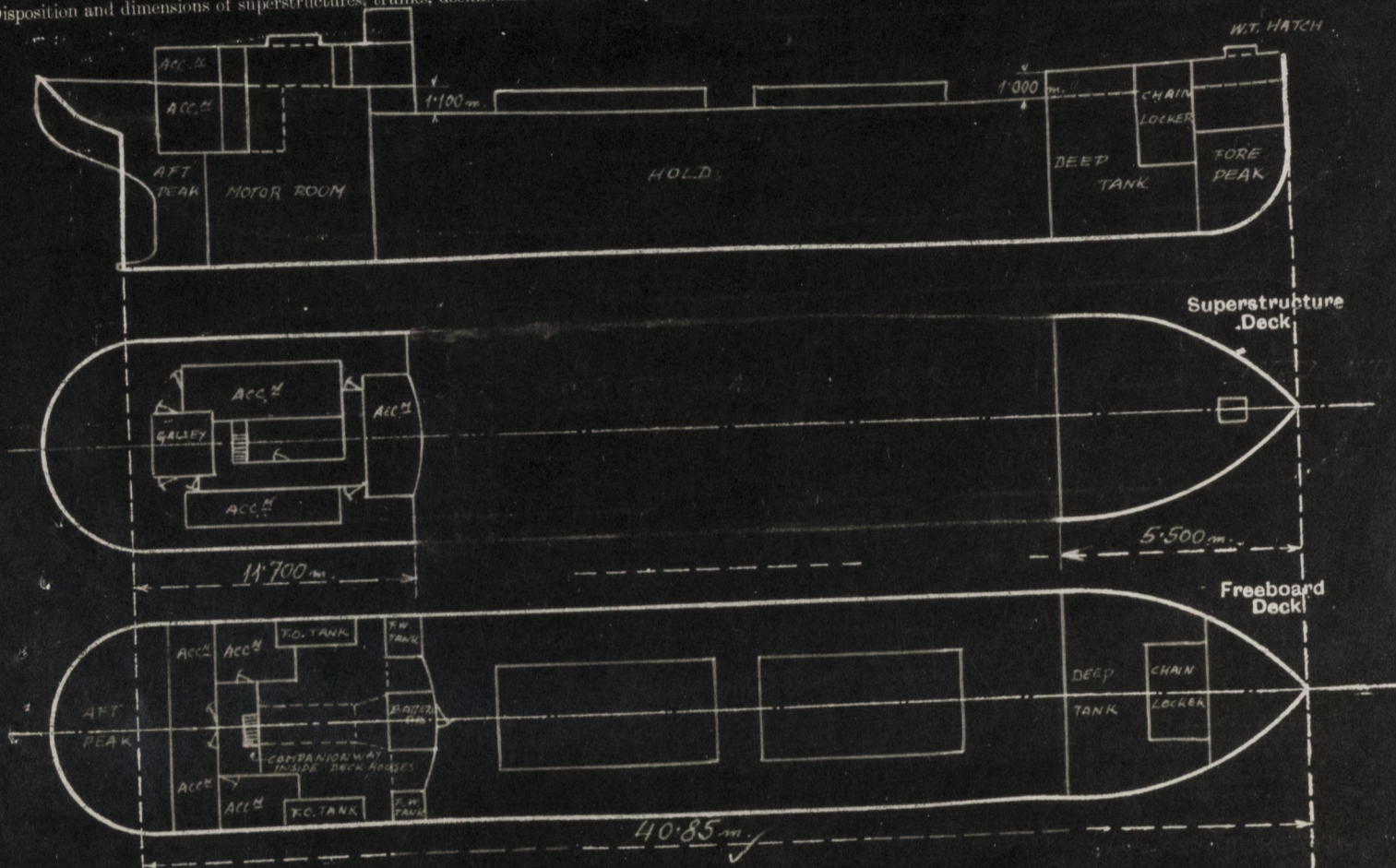
SURVEYS FOR FREEBOARD.

(CONDITIONS OF ASSIGNMENT.)

Ship's Name **ANSALDO YARD 857**
 Official Number
 Nationality and Port of Registry **SWEDISH**

Port of Survey **GENOA**
 Surveyor's Signature *A. J. J. J.*
 Date of Survey **DECEMBER 1946**

Disposition and dimensions of superstructures, trunks, deckhouses and machinery casings to be inserted in the diagrams and tabular statement:



Particulars of Superstructures, Trunks, Casings, Deckhouses.

	Coaming	Plating	Stiffeners	Spacing	End Attachments of Stiffeners	Size of Openings	Height of Sills	Height of Casings R.A.D.
Poop-Bulkhead			FLAT BAR 100x8	580	WELDED AT TOP & BOTTOM	816x566	200	1100
Raised Quarter Deck Bulkhead								
Bridge, After-Bulkhead								
Bridge, Forward-Bulkhead			FLAT IRON 130x10	600	BRACKETED AT TOP ONLY	NONE		
Forecastle Bulkhead								
Trunk, Aft								
Trunk, Forward								
Exposed Machinery Casings on Freeboard or Raised Quarter Decks	NOT EXPOSED							
Exposed Machinery Casings on Superstructure Decks								
Machinery Casings within Superstructures not fitted with Class I Closing Appliances								
Deckhouses on Flush Deck Ships								

Particulars of Closing Appliances (state if capable of being manipulated from both sides).

Poop-Bulkhead	
Raised Quarter Deck Bulkhead	1 HINGED W.T. DOOR MANIPULATED FROM ONE SIDE
Bridge, After-Bulkhead	
Bridge, Forward-Bulkhead	
Forecastle Bulkhead	
Exposed Machinery Casings on Freeboard or Raised Quarter Decks	
Exposed Machinery Casings on Superstructure Decks	
Machinery Casings within Superstructures not fitted with Class I Closing Appliances	
Deckhouses on Flush Deck Ships	

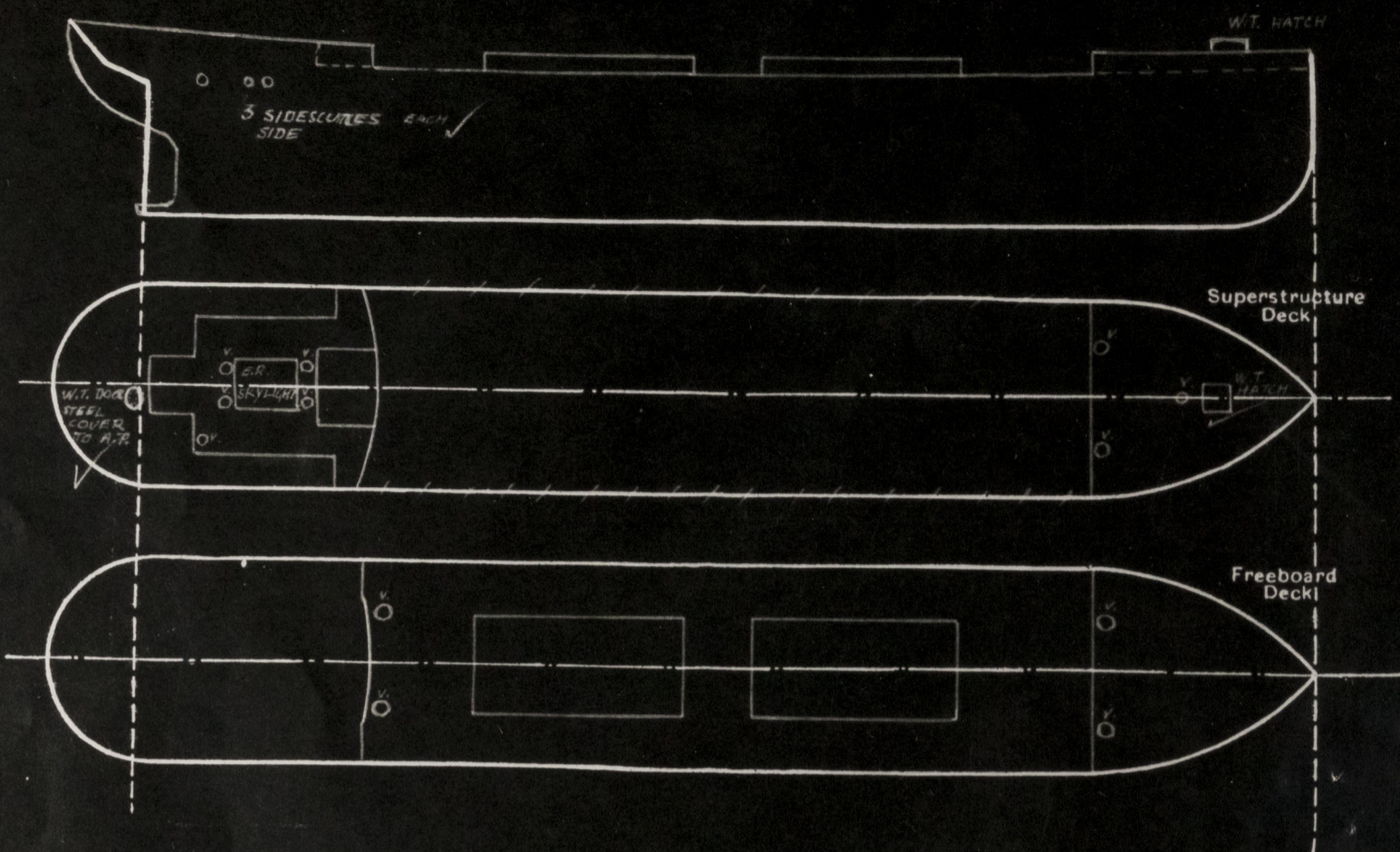


© 2020

Lloyd's Register Foundation

PARTICULARS OF PROTECTION TO OPENINGS, ETC.

The following diagrams should be used to indicate the positions of cargo and coaling hatchways, gangway, cargo and coaling ports, ventilators, companionways, etc., which would affect the seaworthiness of the ship:—



Particulars of fiddle, funnel and ventilator coamings, engine room skylight and other openings in machinery casing tops and their means of closing:—

TUNNEL AND VENTILATORS COAMINGS GOOD CONSTRUCTION OF STEEL ✓
ENGINE ROOM SKYLIGHT OF STEEL WITH HINGED STEEL FLAPS ✓

Particulars of Flush Bunker Scuttles:—

NONE

Particulars of Companionways:—

ENTRANCE DECK HOUSE ON R.Q.D. - 6 HINGED STEEL DOORS 7/8" PLATE, SILL 260% ✓

Dom air alleyways

Particulars of Ventilators in exposed positions on freeboard and superstructure decks:—

1 VENT. ON FORECASTLE DECK 250% DIA. SCAMING 900x8" TO BOATMAN STORE ✓
2 " " " " 360% DIA. " 900x8" DOUBLED FOR 1100% HIGH - TO HOLD ✓
1 " " FREEBOARD DECK 360% DIA. " 8000x8" SUPPORTED FROM R.Q.D. FRONT TO HOLD ✓
2 " " BOAT DECK 250% DIA. " 750x8" TO ENGINE ROOM ✓
2 " " " " 250% DIA. " 500x8" " " " ✓
1 " " " " 250% DIA. " 500x6" TO DECK HOUSE STORE AFT ✓

ALL VENTILATORS CLOSED BY WOOD FLUGS & CANVAS COVER ✓

Particulars of Air Pipes in exposed positions on freeboard, raised quarter, or superstructure decks:—

1 AIR PIPE ON FORECASTLE DECK 760% HIGH x 63% DIA. FROM FORE PEAK ✓
1 " " " " 760% " x 63% " " FORE DEEP TRINNING TANK ✓
2 " " " R.Q.D. 760% " x 50% " " FRESH WATER TANK PORT & STARBOARD ✓
1 " " " " 760% " x 63% " " P+ST. OIL FUEL BUNKERS ✓
1 " " " " 760% " x 63% " " AFTER PEAK ✓

ALL AIR PIPE FITTED WITH GAUZE AND HINGED FLAPS ✓

Particulars of Gangway Cargo and Coaling Ports:—

Particulars of Scuppers and Sanitary Discharge Pipes:—

SCUPPER ON FREEBOARD DECK CUT THROUGH TOP EDGE OF SHEER STRAKE ✓
30% PIPE SCUPPERS (P+S) LED OVERBOARD ABOVE L.W.L. FROM WINCH MOTOR SUMP FITTED WITH STORM VALVES ✓
SANITARY DISCHARGE PIPES FROM R.Q.D. ERECTIONS, FITTED THROUGH SHIP'S SIDE ABOVE L.W.L. WITH STORM VALVES ✓

Any more below?

Particulars of Side Scuttles:—

250% IN R.Q.D. SIDES, OF SUBSTANTIAL CONSTRUCTION, AND FITTED WITH HINGED CAST STEEL DEADLIGHTS. ✓

Vertical distance of Sill of lowest Side Scuttle above top of keel

33 7/8" ✓

Particulars of Guard Rails:—

FORECASTLE DECK: STANCHIONS 1100" HIGH, SPACED 1100" APART WITH 2 RAILS ✓
R.Q.D. " 1100" " 900 " " 2 " ✓

Particulars of Gangways, Lifelines, etc.:—

LIFELINES PROVIDED ✓

Particulars of Freeing Arrangements.

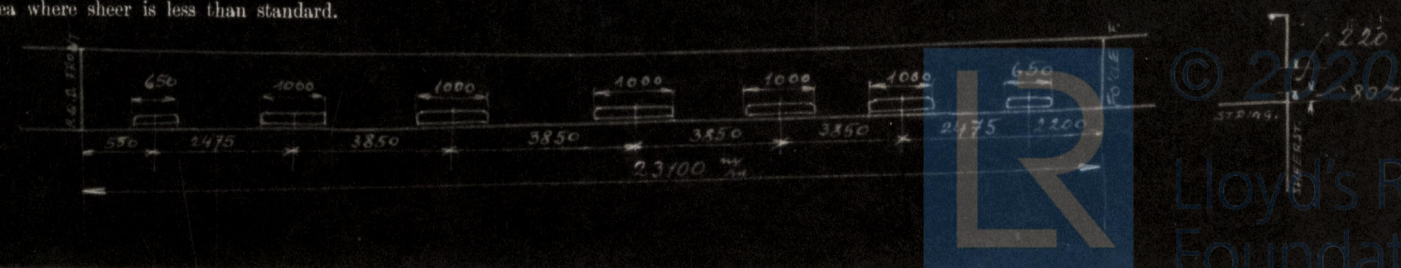
	Length of Bulwark ft	Height of Bulwark ft	Size of Freeing Ports sq. ft.	Number each side	Area each side sq. ft.	Rule area each side sq. ft.
After Well ...	—	—	—	—	—	—
Forward Well ...	23.10	1.10 to 1.10	0.22 0.13	5 2	1.36 ✓	—

State position of each freeing port ... After Well:—

(F. and A. position and height above deck edge) Forward Well:— SEE SKETCH

State whether the freeing ports are fitted with shutters, bars, or rails, and give particulars of such:— NONE

Additional area where sheer is less than standard.



© 2020

Lloyd's Register Foundation

PARTICULARS OF PROTECTION TO OPENINGS, ETC.

HATCHWAYS ON FREEBOARD AND SUPERSTRUCTURE DECKS.					
		FREEBOARD DECK		FORECASTLE	R.O.D.
Description of Hatchway	...	N ^o 1	N ^o 2	HATCH TO BOATSWAIN STAIRS	W.T. DOOR TO A.P.
Dimensions of Hatchway	...	8'25" x 3'60"	8'25" x 3'60"	0'6" x 0'6"	0'45" x 0'35"
COAMINGS	Height above Deck	✓ 6'10"	6'10"	4'00"	✓
	Thickness	10"	10"	8"	
	Stiffeners	F.B. 180 x 10	F.B. 180 x 10	✓	
	Brackets, Stays	F.B. 140 x 4	F.B. 140 x 4	✓	
HATCH BEAMS	Number	5	5		
	Spacing	1'3 7/8" int	1'3 7/8" int		
	Scantling and Sketch	140 x 10	140 x 10	✓	
	Bearing Surface	✓ 90%	90%		
FORE AND AFTERS	Number				
	Spacing				
	Unsupported Lengths				
	Scantling and Sketch	NONE			
HATCH COVERS	Material	WOOD	WOOD	HINGED	9.5 W.T.
	Thickness	65	65	W.T. COVER	STEEL COVER
	How fitted	F.A.	F.A.	7% PLATE	
	Bearing Surface	✓ 65%	65%		
Spacing of Cleats	...	530%	530%	245%	95%
Number of Tarpaulins	...	2	2	WING NUTS	STUDS NUTS

*Are wood fore and afters steel shod at all bearing surfaces? ☒

Are battens and wedges efficient and in good condition? ☒

Are tarpaulins in good condition and in accordance with rule requirements? ☒

Are lashings provided in accordance with rule requirements? ☒

YES - NEW ✓

Particulars of any special features:—



Endorsement at first survey and at surveys for renewal of Certificate:—

The fittings and appliances are in accordance with the particulars shown on this form (or as now modified) and are in good condition.