

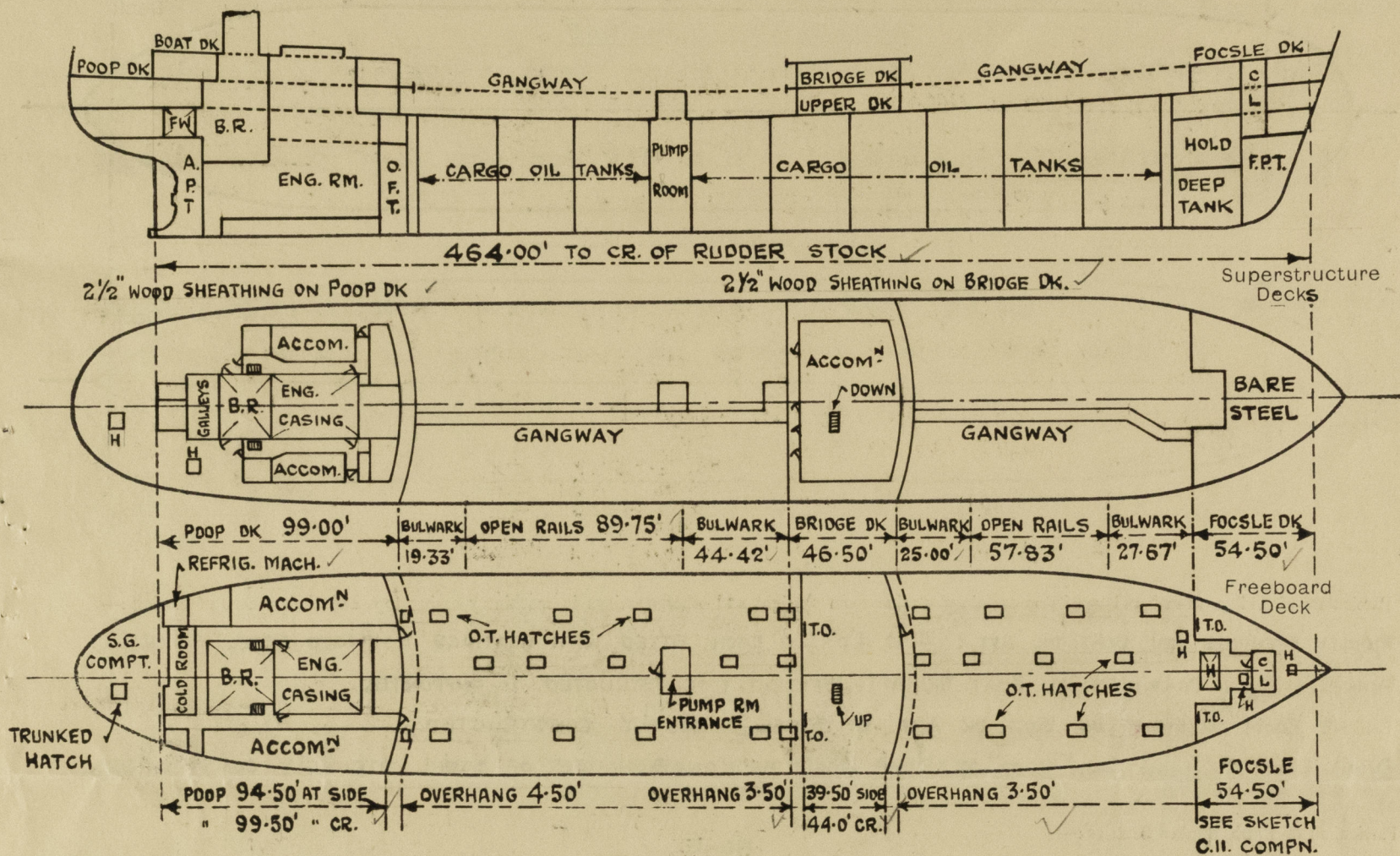
Lloyd's Register of Shipping.

SURVEYS FOR FREEBOARD.

(CONDITIONS OF ASSIGNMENT.)

Ship's Name **BRITISH MARINER** Port of Survey **GLASGOW**
 Official Number **182898** Surveyor's Signature *Whacmillan*
 Nationality and Port of Registry **BRITISH. LONDON** Date of Survey **WHILST BUILDING**

Disposition and dimensions of superstructures, trunks, deckhouses and machinery casings to be inserted in the diagrams and tabular statement:—



Particulars of Superstructures, Trunks, Casings, Deckhouses.								
	Coaming	Plating	Stiffeners	Spacing	End Attachments of Stiffeners	Size of Openings	Height of Sills	Height of Casings
Poop Bulkhead ...	-	.46"	10" x 3 1/2" x .46" B.A.	33"	WELDED T & B.	2 @ 5'-0" x 3'-0"	18"	8'-0"
Raised Quarter Deck Bulkhead ...	-	.44"	" " .40"	30"	-	-	-	-
Bridge, After Bulkhead ...	-	.34"	2 WEBS F & A	-	OVERLAPS	2 @ 4'-1" x 3'-1"	16"	8'-0"
Bridge, Forward Bulkhead ...	-	.30"	4" x 3" x .36" O.A.	33"	BOUNDARY BARS	2 @ 4'-1" x 3'-1"	16"	8'-0"
Forecastle Bulkhead ...	-	.46"	10" x 3 1/2" x .40" B.A.	33" - 30"	WELDED T & B.	1 @ 5'-0" x 3'-0"	18"	8'-0"
Trunk, Aft ...	-	.44"	" " .32"	30"	-	-	-	-
Trunk, Forward ...	-	.34"	4" x 3" x .36" O.A.	33"	-	2 @ 4'-1" x 3'-1"	18"	8'-0"
Exposed Machinery Casings on Freeboard or Raised Quarter Deck ...	-	.30"	4" x 3" x .32" O.A.	27"	RIVETED TO BEAMS ON F & A. BHDS.	1 @ 4'-3" x 2'-3"	18"	8'-0"
Exposed Machinery Casings on Superstructure Decks BOILER CASING.	-	.30"	3" x 2 1/2" x 5/16" O.A.	30"	BKTS AT TOP IN WAY OF FUNNEL. OVERLAPS DK BAR AT BOTTOM	2 @ 4'-3" x 2'-3"	15"	8'-3 1/2"
Machinery Casings within Superstructure not fitted with Class I Closing Appliances POOP SPACE	.30"	.26"	3" x 2 1/2" x 5/16" O.A.	30"	RIVETED TO BEAMS AT TOP NO ATTACHMENT AT BOTTOM.	2 @ 5'-0" x 2'-6"	21"	8'-0"
PUMP ROOM ENTRANCE	.30"	.40"	4" x 3" x .38" O.A.	30"	WELDED T & B.	1 @ 4'-3" x 2'-3"	22"	7'-6"
Deckhouses on Flush Deck Ships	-	.40"	5" x 3" x 5/16" O.A. WELDED TOE ON.	26"	-	-	-	-
Particulars of Closing Appliances (state if capable of being manipulated from both sides).								
Poop Bulkhead ...	2 HINGED STEEL W.T. DOORS. MANIPULATED FROM BOTH SIDES.							
Raised Quarter Deck Bulkhead ...	STORM BOARDS IN WELDED CHANNELS & PORTABLE PLATES SECURED BY HOOK							
Bridge, After Bulkhead ...	BOLTS NOT PASSING THROUGH BULKHEAD.							
Bridge, Forward Bulkhead ...	1 HINGED STEEL W.T. DOOR. MANIPULATED FROM BOTH SIDES.							
Forecastle Bulkhead ...	1 HINGED STEEL W.T. DOOR. MANIPULATED FROM BOTH SIDES. STORM BOARDS IN WELDED							
Exposed Machinery Casings on Freeboard or Raised Quarter Deck ...	CHANNELS & PORTABLE PLATES SECURED BY HOOK BOLTS NOT PASSING THROUGH BULKHEAD.							
Exposed Machinery Casings on Superstructure Decks BOILER CASING	2 HINGED STEEL W.T. DOORS. MANIPULATED FROM BOTH SIDES.							
Machinery Casings within Superstructure not fitted with Class I Closing Appliances POOP SPACE	2 HINGED STEEL W.T. DOORS. MANIPULATED FROM BOTH SIDES.							
PUMP ROOM ENTRANCE	1 HINGED STEEL W.T. DOOR. MANIPULATED FROM BOTH SIDES.							
Deckhouses on Flush Deck Ships								

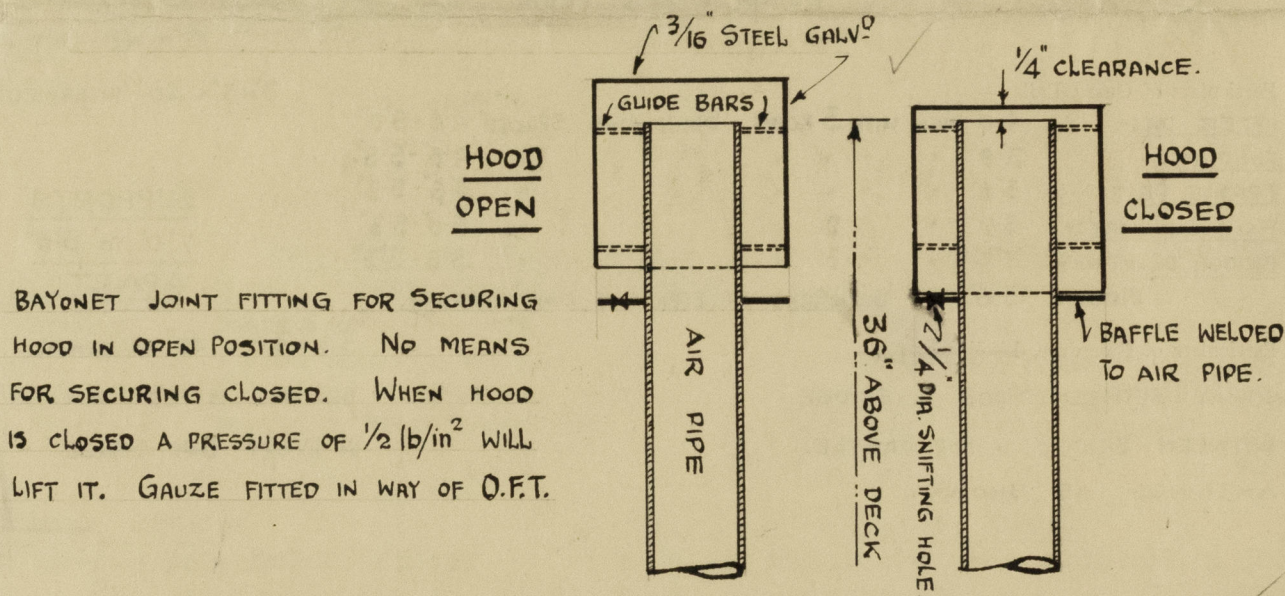
BRITISH MARINER.

PARTICULARS OF PROTECTION TO OPENINGS, ETC.

HATCHWAYS ON FREEBOARD AND SUPERSTRUCTURE DECKS.										FOCSLE DECK	← POOP DK. →	
UPPER DECK												
Description of Hatchway	FORE HOLD	CARGO TANKS	F.P. STORE	FORD TWEEN DK	FORD PUMP RM	OIL FUEL BUNKERS	COFFERDAMS & SETTLING TANKS	MANHOLE TO FOCSLE	STERN COMPT.	POOP SPACE.
Dimensions of Hatchway	6'9"×10'0"	27 OFF 6'0"×4'0"	3'0"×3'0"	2'6"×2'0"	3'0"×3'0"	2 OFF 3'0"×3'0"	10 OFF 23"×18"	23"×18"	2'6"×2'6"	2'9"×2'9"
COAMINGS	{	Height above Deck	30"	12"	9"×3"×40"	9"×3"×40"	30"	30"	MANHOLES	9"×3"×40"	30"	21"
		Thickness { Sides	44"	50"	B.A.	B.A.	40"	40"	12"×3½"×50"	B.A.	40"	40"
		Stiffeners ...	2"×2"×45" OR	- ✓	- ✓	- ✓	- ✓	O.A. WELDED TOE ON TO DECK	✓	✓	- ✓	
		Battens, Stays ...	WELDED TOE ON ALL ROUND TOP.	-	-	-	-					
HATCH BEAMS	{	Number ...										
		Spacing ...										
		Scantling and Sketch										
		Bearing Surface ...					NONE					
FORE AND AFTERS	{	Number ...	1									
		Spacing ...	5'0"									
		Unsupported Lengths	6'9"									
		Scantling* and Sketch	2"×2"×45"					NONE				
		Bearing Surface ...	6"×3"×44"	12"×50"								
HATCH COVERS	{	Material ...			STEEL PLATE							WOOD
		Thickness ...	60"	64"	50"	50"	50"	50"	46"	46"	50"	2½"
		How fitted ...			HINGED				BOLTED	HINGED		
		Bearing Surface ...	W.T. FITTED IN 2 PARTS.	O.T.	W.T.	W.T.	W.T.	O.T.	O.T.	W.T.	W.T.	2½"
Spacing of Cleats	13½"-15¾"	14"-16"	17"-18"	15"-18"	18"	17"-20"	BOLTS 3½"	TOGGLES 17"	2	2 PER SIDE
Number of Tarpaulins...				APART.		PITCH	APART	PER SIDE	2	2

*Are wood fore and afters steel shod at all bearing surfaces? -
Are battens and wedges efficient and in good condition? YES.
Are tarpaulins in good condition and in accordance with rule requirements? YES.
Are lashings provided in accordance with rule requirements? -

Particulars of any special features:— 12 1/2" DIA. OPENING IN UPPER DECK TO EACH CARGO OIL TANK FOR "BUTTERWORTH" TANK CLEANING SYSTEM, CLOSED W.T. BY 3/4" STEEL PLATE COVER SECURED BY 3/4" BOLTS @ 4 3/4" PITCH.



AUTOMATIC STEEL COVER FOR AIR PIPES.