

Lloyd's Register of Shipping.

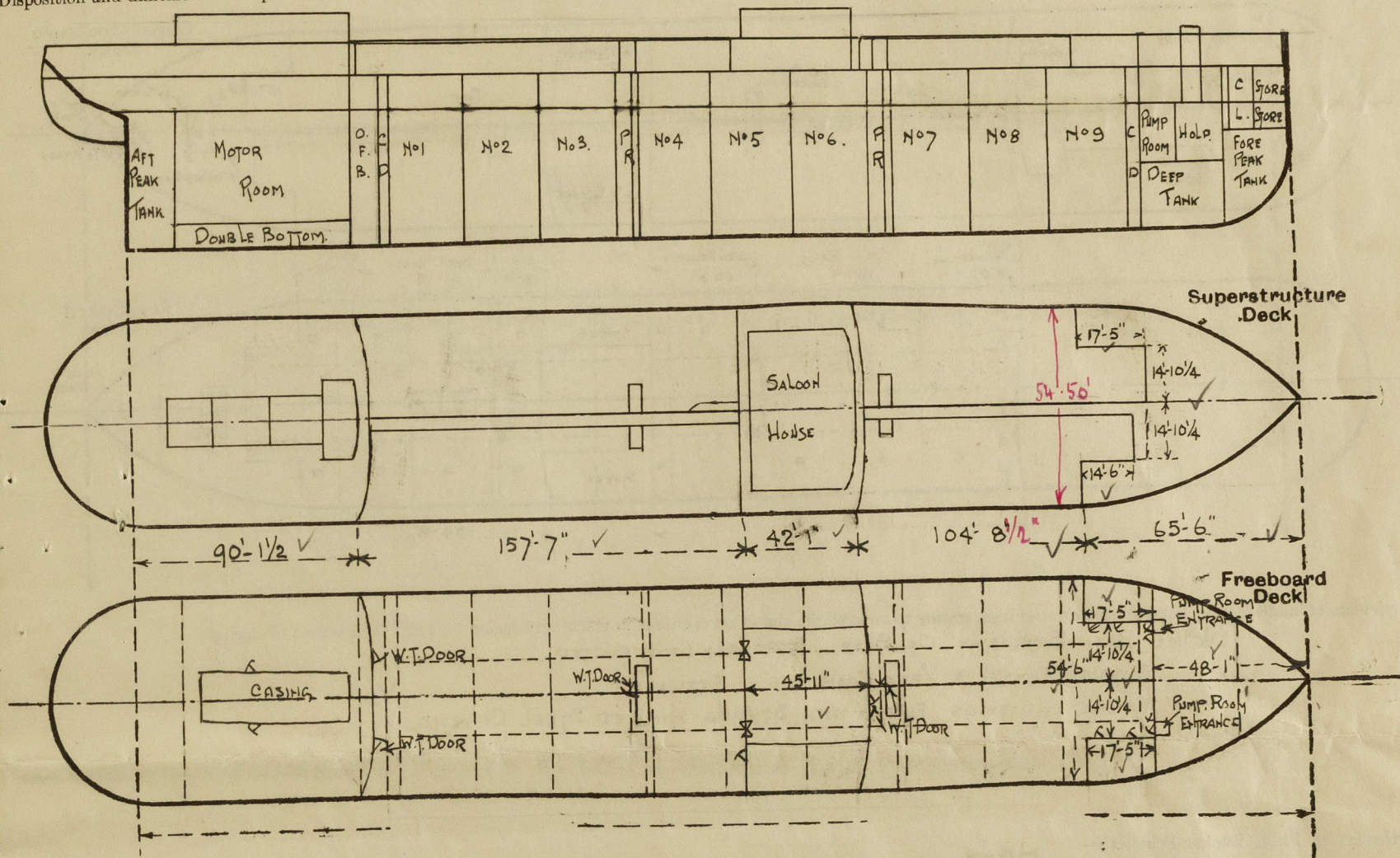
SURVEYS FOR FREEBOARD.

(CONDITIONS OF ASSIGNMENT.)

GRK. REPORT N° 20584.

Ship's Name **M.Y. DORCASIA.** Port of Survey **GREENOCK**
 Official Number **✓ 166531** Surveyor's Signature **Hennethy Ingho.**
 Nationality and Port of Registry **BRITISH - LONDON.** Date of Survey **WHILE BUILDING.**

Disposition and dimensions of superstructures, trunks, deckhouses and machinery casings to be inserted in the diagrams and tabular statement:--



Particulars of Superstructures, Trunks, Casings, Deckhouses.

	Coaming	Plating	Stiffeners	Spacing	End Attachments of Stiffeners	Size of Openings	Height of Sills	Height of Casings
Poop Bulkhead ...	44 ✓	44 ✓	10 x 3 1/2 x 44 B.A. 7 x 3 1/2 x 46 B.A. WITH 6 x 3 1/2 x 46 R. BAR.	30" ✓	BRACKETS TOP LUGS BOTTOM.	5'-0" x 2'-0" ✓	18" ✓	7'-6" ✓
Raised Quarter Deck Bulkhead ...						2 @ 5'-0" x 3'-0" 1 @ 4'-6" x 2'-3"	18" ✓	7'-6" ✓
Bridge, After Bulkhead ...	30 ✓	30 ✓	4 1/2 x 3 x 34 ✓	30" ✓	BRACKETS TOP LUGS BOTTOM.	4'-6" x 2'-0" 2 @ 4'-6" x 2'-0" 6 @ 5'-0" x 2'-0"	18" ✓	7'-6" ✓
Bridge, Forward Bulkhead ...	44 ✓	44 ✓	9 x 3 1/2 x 40 B.A.	30" ✓	✓	✓	18" ✓	7'-6" ✓
Forecastle Bulkhead ...	30 ✓	30 ✓	4 x 3 x 32.	30" ✓	✓	✓	18" ✓	7'-6" ✓
Trunk, Aft ...								
Trunk, Forward ...								
Exposed Machinery Casings on Freeboard or Raised Quarter Decks ...								
Exposed Machinery Casings on Superstructure Decks ...	34 ✓	30 ✓	3 x 3 x 30 ✓	30" ✓	BELTS AT TOP ✓	NONE ✓	✓	8'-0" ✓
Machinery Casings within Superstructures not fitted with Class I Closing Appliances ...								
Deckhouses on Flush Deck Ships ...								

Particulars of Closing Appliances (state if capable of being manipulated from both sides).

Poop Bulkhead ...	HINGED STEEL W.T. DOORS OPERATED FROM BOTH SIDES. ✓
Raised Quarter Deck Bulkhead ...	✓
Bridge, After Bulkhead ...	STEEL PLATES SECURED BY HOOK BOLTS 15" APART; HINGED STEEL W.T. DOOR (STAR). ✓
Bridge, Forward Bulkhead ...	HINGED STEEL W.T. DOOR OPERATED FROM BOTH SIDES. ✓
Forecastle Bulkhead ...	2 HINGED STEEL W.T. DOORS & 6 STRONG WOOD HINGED DOORS OPERATED FROM BOTH SIDES. ✓
Exposed Machinery Casings on Freeboard or Raised Quarter Decks ...	✓
Exposed Machinery Casings on Superstructure Decks ...	NO OPENINGS. ✓
Machinery Casings within Superstructures not fitted with Class I Closing Appliances ...	✓
Deckhouses on Flush Deck Ships ...	✓

Lorcasia.

The image contains two hand-drawn technical drawings of a ship's hull, likely a small motor launch or tugboat, showing the plan view (top) and the side view (bottom).

Plan View (Top):

- Left End:** AFT PEAK TANK, MOTOR ROOM, DOUBLE BOTTOM.
- Along the Length:** A series of numbered compartments: N°1, N°2, N°3, N°4, N°5, N°6, N°7, N°8, N°9.
- Right End:** PUMP ROOM, HOLD, DEEP TANK, STORE, FORE PEAK TANK.

Side View (Bottom):

- Decks:** Superstructure Deck, Freeboard Deck.
- Structural Details:** STEEL BULKWARK, OPEN RAILS, STEEL BULKWARK, OPEN RAILS, STEEL BULKWARK.
- Dimensions:**
 - Overall length: 157'-7"
 - Section 1: 80'-6" (with 15'-0" and 64'-6" sub-dimensions)
 - Section 2: 15'-6" (with 8'-0" and 6'-6" sub-dimensions)
 - Section 3: 104'-8 1/2"
- Other Labels:** HATCH TO ROPE STORE, HATCH TO STORE, PUMP ROOM ENTRANCE, PUMP, 6" V TO STORE, 10" TO TANK, 10" TO PUMP ROOM, HATCH TO STORE.

ENGINE ROOM SKYLIGHT OF STEEL STRODALLY CONSTRUCTED.
FIDDLY, FUNNEL & VENT COAMINGS EFFICIENT.
FIDDLY GRATINGS FITTED WITH STRONG HINGED STEEL COVERS. ✓

Particulars of Companionways:— PUMP ROOM ENTRANCES IN FOREY AFTER WELLS. ✓
OPENINGS CLOSED BY STEEL HOUSE SUBSTANTIALLY CONSTRUCTED. ✓
WITH HINGED W.T. DOOR AT AFTER END SILL 18" ✓
DOORS WORKABLE FROM BOTH SIDES.
ALSO COMPANION TO POOP TWEEN DECKS CONSTRUCTED OF STEEL &
HAVING STEEL W.T. DOOR WITH SILL 18" HIGH & WORKABLE
FROM BOTH SIDES

FORECASTLE DECK -				POOP DECK			
2-10" DIA VENTS TO FORE HOLD COAMING	36"x 32"	✓		2-6" DIA VENTS TO HOSPITAL COAMING	30"x 30	✓	
2-10" " " TWIN DKS	36"x 32	✓		3-6" " " " W.C.S	30"x 30	✓	
1-10" " " PUMP ROOM	36"x 32	✓		2-8" " " " POOP TWIN DKS	30"x 30	✓	
2-8" " " STORES	36"x 30	✓		1-12" " " " 2 ND Dk STORE	30"x 34	✓	
				1-12" " " " POOP TWIN DKS	5'0" x 24	✓	Stayed To House
				1-10" " " " STEERING GEAR	30" x 32	✓	
				1-10" " " " PASSAGE	36" x 32	✓	
				5-6" " " SN VENTS TO W.C.	30" To Lip.	✓	
FOREN AFTER WELLS				BOAT DECK -			
1-24" DIA DERRICK POSTS PORT & STARBOARD TO EACH PUMP ROOM.		✓		2-12" DIA VENTS TO ENGINEERS STORE COAMING	30"x 34	✓	
CONNECTED TO PUMP ROOM ENTRANCE & STAYED		✓		3-10" " " " PASSAGE	30"x 32	✓	
				2-12" " " " WORKSHOP	30"x 34	✓	
				4-14" " " " POOP TWIN DKS	30"x 36	✓	
BRIDGE DECK							
7-6" DIA VENTS TO BRIDGE SPACE STORES COAMING	30"x 30	✓					

BREASTCASTLE DX -
2. S.N. AIR PIPES 4" DIA TO FORE PEAK 18" TOLIP ✓
2. S.N. " " 4" " " DEEP TANK 18" " "

FORWARD WELL
1 S.N AIR PIPE 3" DIA. TO COFFERDAM (P4S) ✓
LED UP FILL FRONT ABOUT 6'-6" ABOVE DX.

AFTERWELL
1 AIR PIPE (P4S) 3½" DIA TO COFFERDAM ✓
LED TO HEIGHT OF POOP DX.
1 " " (P4S) 4" DIA TO O.F BUNKER ✓
1 " " (P4S) 3" " " SETTLING TANKS. ✓
ALL LED UP POOP BWG TO 2'-6" ABOVE POOP DX. ✓

POOP DX
1. S.N. 3" DIA AIR PIPES TO AFT PEAK TANK (P5) 2'-6" TO LIP -
1. S.N. 2" " " " RUDDER TRUNK 2'-6" " "
2. S.N. 3" " " " F.W. TANKS (P5) 2'-6" " "

BOAT DN 4 CASING TOP -
1. S.N. 3" AIR PIPE TO OIL FUEL D.B. (P4S) 1'-6" TOLIP
1. S.N. 3½" " " LUB OIL D.B (P4S) 1'-6" " "
2. S.N. 5" " " " TWIN DXS (STAR) 1'-6" " "
2. S.N. 2" " " " COFFERDAM D.B. (P4S) 1'-6" " "
2. S.N. 3½" " " " COOLING WATER TANKS 1'-6" " "

ALL AIR PIPES FROM OIL SPACES
FITTED WITH COPPER GAUZE ELSEWHERE ✓
WOOD PLUGS FITTED. ✓

-NONE-

SCUPPERS INWELLS:- 6 PIPE SCUPPERS FITTED AT ENDS OF BRIDGE POOP DISCHARGING ABOUT 18" BELOW FREEBOARD DK. ✓
STRAINER BAR CUT FOR REMAINING SCUPPERS.
IN POOP & FOLETIN DMS:-
DISCHARGE OVERBOARD & FITTED WITH STORM VALVES AT SHIPS SIDE & BRASS SCREWED PLUGS AT INNER END. ✓
SANITARY DISCHARGES:- FROM ENCLOSED SPACES FITTED WITH STORM VALVES AT SHIPS SIDE & U BEND TRAP AT INNER END
STORM VALVES FROM POOP & FOLETIN SPACES ABOUT 6'-0" BELOW FREEBOARD DK.
" " " BRIDGE HOUSE FITTED ABOVE FREEBOARD DK. ✓

SIDELIGHTS ARE FITTED IN POOP BRIDGE & FORECASTLE SPACES 8" TO 10" DIA.
ALL SIDELIGHTS ARE OF SUBSTANTIAL CONSTRUCTION & ARE FITTED WITH HINGED
STEEL DEADLIGHTS.

Particulars of Guard Rails :- POOP BRIDGES FOLE DKS -
RAILS 3'-6" HIGH WITH 3 RODS & STANCHIONS SPACED ABOUT 5'-0" APART. ✓
FORE & AFTER WELLS - RAILS & STANCHIONS BETWEEN BULWARKS 3'-6" HIGH WITH 3 RODS
& STANCHIONS SPACED 5'-0" APART. ✓

EFFICIENT GANGWAY FITTED OVER BOTH WELLS.

ANGLE SUPPORTS - $4 \times 4 \times 4.0$ SPACED ABOUT 7'-6" APART. ✓

DIAGONAL STAYS. - $3 \times 3 \times 30$ ✓

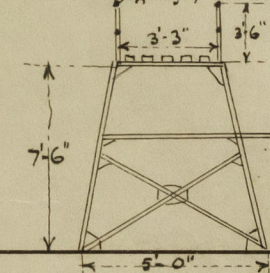
PLATFORM ANGLES. - $4 \times 4 \times 4.0$ ✓

FOREM APT GIRDERS - $6 \times 3 \times 4.0$ CHANNEL ✓

SUPPORTS BRACED F.H. WITH $3 \times 3 \times 30$ ANGLE STAYS. ✓

WOOD PLATFORM 5×3 WOOD SPACED 1" ✓

RAILS - 3×3 " HIGH 2 ROD STANCHIONS 5'-0" APART. ✓



Particulars of Freeing Arrangements.						
	Length of Bulwark	Height of Bulwark	Size of Freeing Ports	Number each side	Area each side	Rule-area each side
After Well	For ^O Of POOP 18'-0" ✓ Aft ^O Of BRIDGE 59'-3" ✓	3'-6" ✓	3'-0" x 1'-6" OVAL ✓	1 ✓ 2	4.75 ✓ 9.5	OPEN RAILS ✓ 80'-4" ✓
Forward Well	For ^O Of BRIDGE 15'-6" ✓ Aft ^O Of SIDE 27'-3" ✓	3'-6" ✓	3'-0" x 1'-6" OVAL. ✓	1 ✓ 1	4.75 ✓ 4.75	OPEN RAILS ✓ 61'-9" ✓

State whether the freeing ports are fitted with shutters, bars, or rails, and give particulars of such:— FITTED WITH 3 VERTICAL BARS. ✓

Additional area where sheer is less than standard. ✓

PARTICULARS OF PROTECTION TO OPENINGS, ETC.

HATCHWAYS ON FREEBOARD AND SUPERSTRUCTURE DECKS.									
		OILTIGHT HATCHES 12 IN FORD WELL 15 IN AFT WELL		HATCH TO HOLD ON FPLE DECK	HATCH TO STORE ON FPLE DK.	HATCH TO STORE ON POOP DK	HATCH ON POOP TO ROPE SPACE		
Description of Hatchway		4'-0" x 3'-0" ✓		8'-0" x 10'-0" ✓	2'-6" x 2'-6" ✓	2'-9" x 3'-0" ✓	16 1/2" DIA. ✓		
Dimensions of Hatchway		30" ✓ 40" ✓ 40" ✓ ✓ ✓		.30 ✓ .44 ✓ .44 ✓ 6 x 3 x 40 BA ✓ ✓	6 x 3 x 40 ANG COAMING. HINGED STEEL W.T. COVERS 40" ✓ SECURED BY TOGGLES 15" APART. ✓				
COAMINGS { Height above Deck Thickness { Sides Stiffeners Brackets, Stays		30" ✓ 40" ✓ 40" ✓ ✓ ✓							
HATCH BEAMS { Number Spacing Scantling and Sketch		STEEL HINGED COVERS 50" THICK WITH STIFFS 4 x 3 x 40 ✓ CLOSED BY TOGGLES ✓ SPACED 11" 13 1/2" APART ✓		RUNNED TO 2 ND DECK ✓ 30 PLATING ✓ STIFFS 3 x 3 x 30 ✓ 24" APART ✓					
Bearing Surface		MANHOLES. 3 TO FORD COFFERDAM ✓ 3 " AFT " ✓ 2 " O.F. BUNKER ✓ 23 x 18 1/2 ✓		STEEL HINGED / W.T. COVER ✓ 40 WITH 4 x 3 ✓ x 40 STIFFS ✓ 33" APART ✓					
FORE AND AFTERS { Number Spacing Unsupported Lengths Scantling* and Sketch		COAMING 12 x 3 1/2 x 3 1/2 x 40 ✓ CHANNELS ✓ 50 STEEL COVERS ✓ WITH BOLTS SPACED ✓ 4" APART. ✓		COVER SECURED BY TOGGLES ✓ SPACED 15" APART. ✓					
Bearing Surface									
HATCH COVERS { Material Thickness How fitted Bearing Surface									
Spacing of Cleats									
Number of Tarpaulins									
<p>*Are wood fore and afters steel shod at all bearing surfaces? ✓</p> <p>Are battens and wedges efficient and in good condition? ✓</p> <p>Are tarpaulins in good condition and in accordance with rule requirements? ✓</p> <p>Are lashings provided in accordance with rule requirements? ✓</p>									

Particulars of any special features :—

Endorsement at first survey and at surveys for renewal of Certificate :—

The fittings and appliances are in accordance with the particulars shown on this form (or as now modified) and are in good condition.



© 2020

Lloyd's Register
Foundation