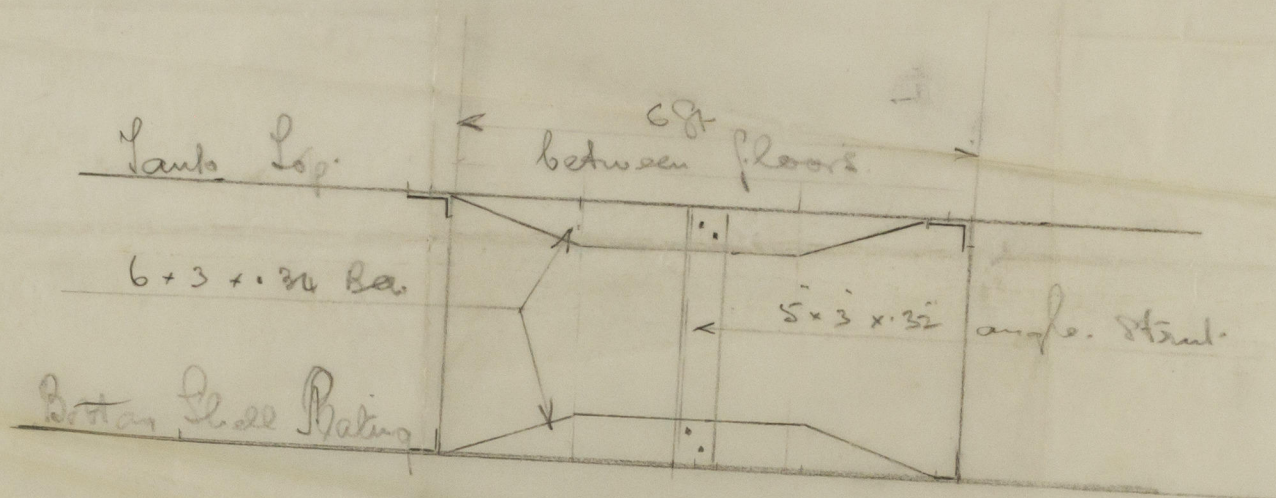
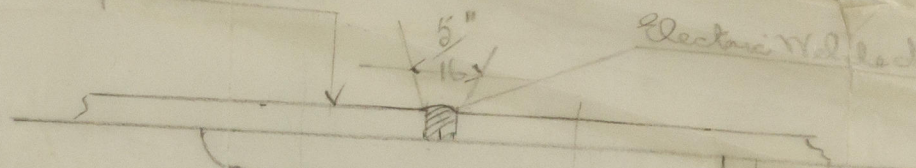


See ~~Case~~ No. 120
Dave S. B. Corp. No 501.

Showing proposed angle midway
between floors



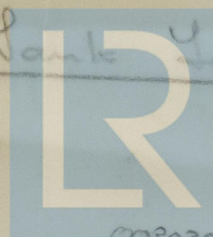
Tank Top .30" x .40"



Reverse Frame $6 \times 3 \frac{1}{2} \times .44$

Floor plate .30

Showing proposed welding at Tank Top Bottom



© 2020

Lloyd's Register
Foundation

003038-003045-0260