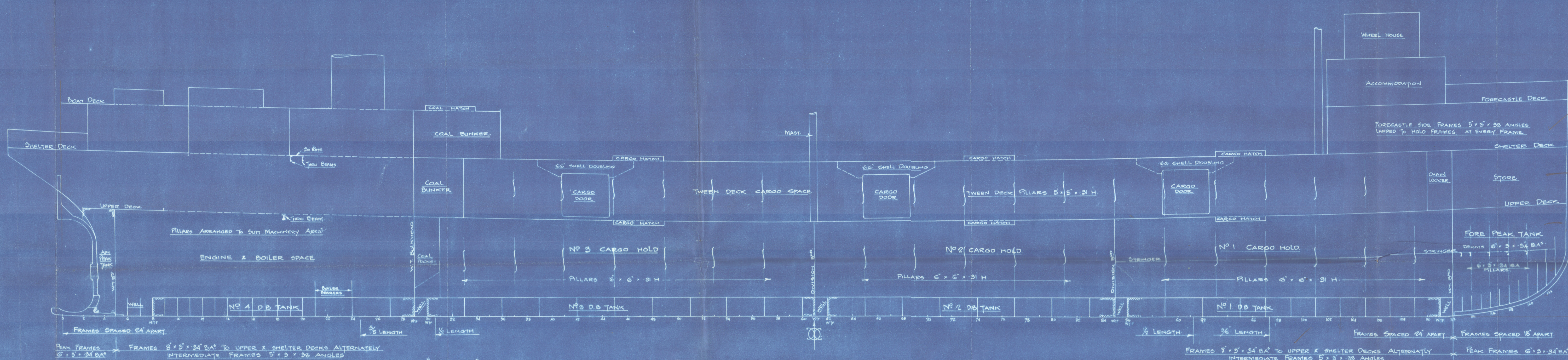
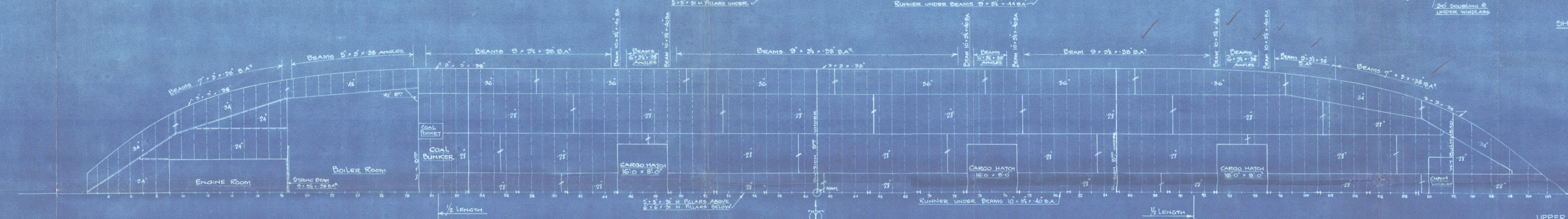
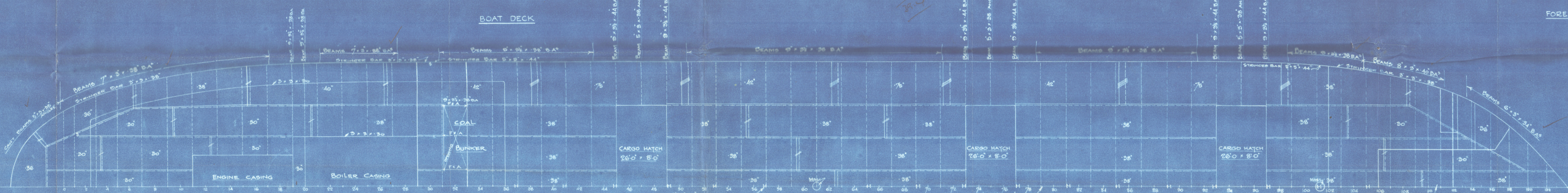


8 NOV 1923  
10 NOV 1923

Approval Confirmed  
12.11.23 JH



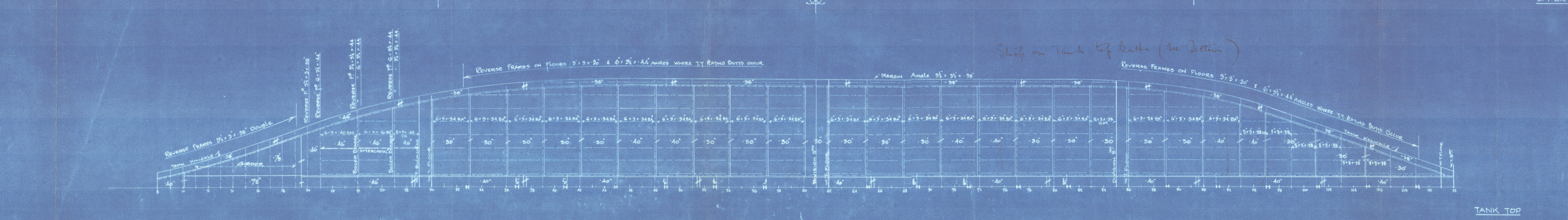
22.41  
16-6  
2406



BULKHEADS				
Nº	PLATING	FRAME	BEAM	STIFFENERS
5	36" - 24"	3 1/2" x 3 1/2" x 36"	3 x 3 x 36"	7' 3" x 36" BA SPACED 24"
20	36" - 24"	3 1/2" x 3 1/2" x 36"	3 x 3 x 36"	8' 3" x 36" BA " 30"
61	30" - 24"	5' x 5' x 36"	"	6' 3/4" x 36" ANGLE " 30"
85	30" - 24"	5' x 5' x 36"	"	6' 3/4" x 36" ANGLE " 30"
102	30"	5' x 5' x 36"	"	5' x 3" x 36" ANGLE " 30"
112	36" - 24"	3 1/2" x 3 1/2" x 44"	"	7' 3" x 36" BA " 24"

DIMENSIONS	
LENGTH BP	242' 0"
BREADTH Mº	46' 0"
DEPTH Mº	24' 0"
DRAFT FW	14' 0"

TO CLASS BS \* GREAT LAKES & RIVER ST LAWRENCE SERVICE



DAVE SHIPBUILDING & REPAIRING CO. LIMITED.  
LAUZON LEVIS, QUE.  
HULL Nº 501  
PROFILE & DECK PLANS

Job Nº 501-1  
SCALE 1/8" = 1'-0"  
DATE Oct 16th 23  
APPROVED DATE

THE LLOYD'S REGISTER OF SHIPBUILDING  
W. H. HALL  
1923 Oct 23

Lloyd's Register Foundation

2

Profile & Deck

Davis S. & H. Co.

N<sup>o</sup> 501. ~~Midland N<sup>o</sup> 23~~

S. & H. 28/11/28.

12-11-28.

~~Also for Midland S. & H. Co. N<sup>o</sup> 23.~~

Davis N<sup>o</sup> 501.  $\frac{5}{8}$ " CITY of WINDSOR"

~~Midland N<sup>o</sup> 23  $\frac{5}{8}$ " "Hermie"~~

003038-003045-0258

Davis S. & H. Co. 501.

Profile & Deck



© 2020

Lloyd's Register  
Foundation