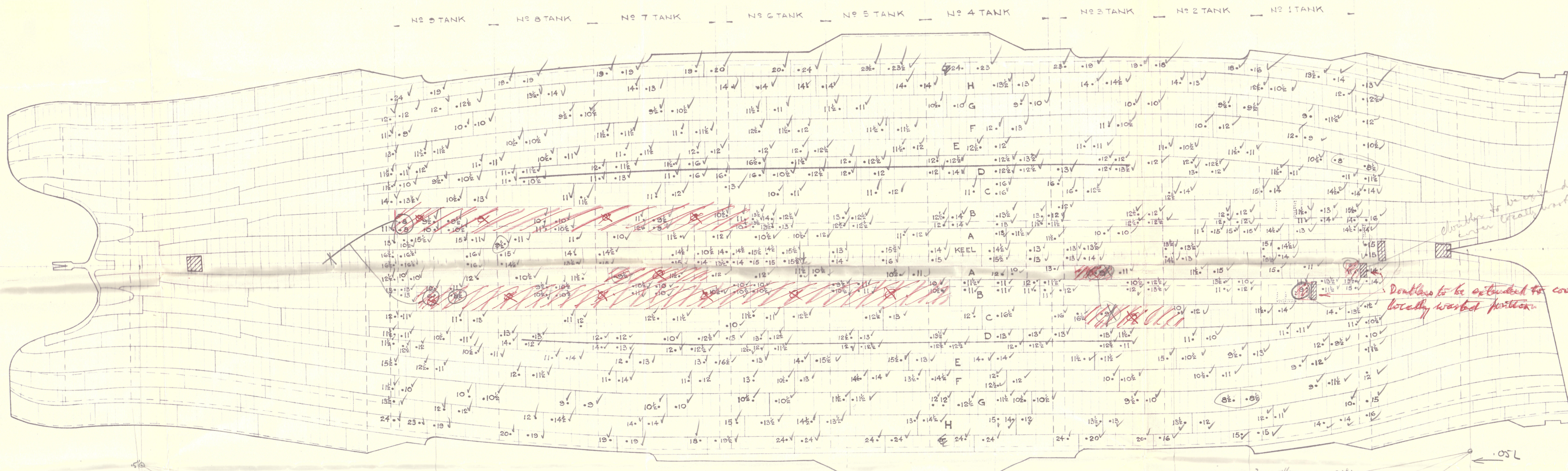
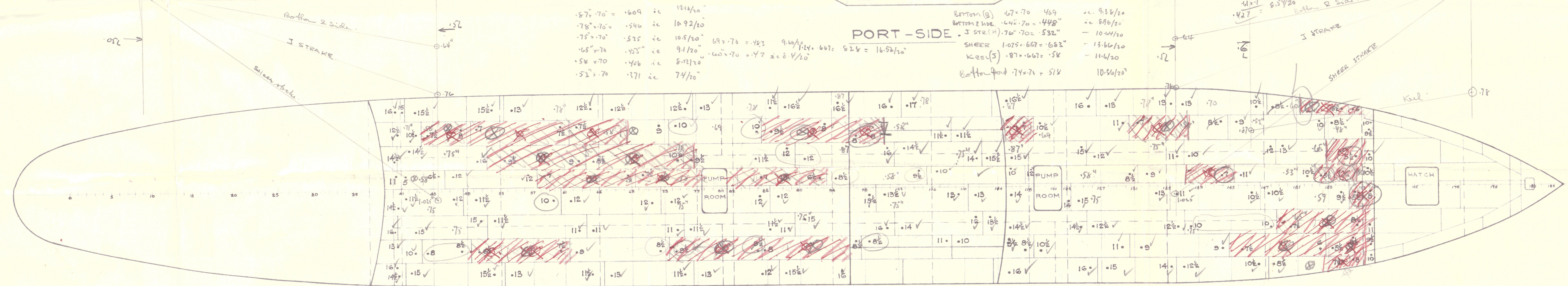


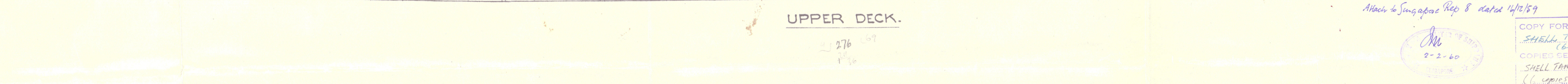
# STARBOARD-SIDE.



# PORT-SIDE.



# UPPER DECK.



## NOTE

ALL TEST HOLES THICKNESSES ARE SHOWN IN TWENTIETHS OF AN INCH.  
 NEW DOUBLERS SHOWN THUS RENEWALS THUS: - SEE LETTER  
 NEW RIVETS SHOWN THUS

Attach to Singapore Rep 8 dated 14/12/59

2-2-60

OFFICE

Q.	Ref.	Item.	SINGAPORE HARBOUR BOARD, SINGAPORE SHIPBUILDERS, ENGINEERS & BOILERMAKERS Date 19/1/60	SCALE:- N. T. S. DRAWN:- Y. K. KOH. TRACED:- CHECKED:- DATE:- 12/1/60. DRG NO. R/1432
"DRUPA"				
TEST HOLES IN SHELL AND IN DECK.				

COPY FOR  
SHELL TANKER LTD.  
(60:R)  
COPIES SENT TO  
SHELL TANKER LTD.  
(6 copies of WHITE PRINT)  
15/1/60

Full  
1-3-60



DRUPA

Dowling.

OFFICE GPM

SNG. 13679

003038-003045-0174



© 2020

Lloyd's Register  
Foundation