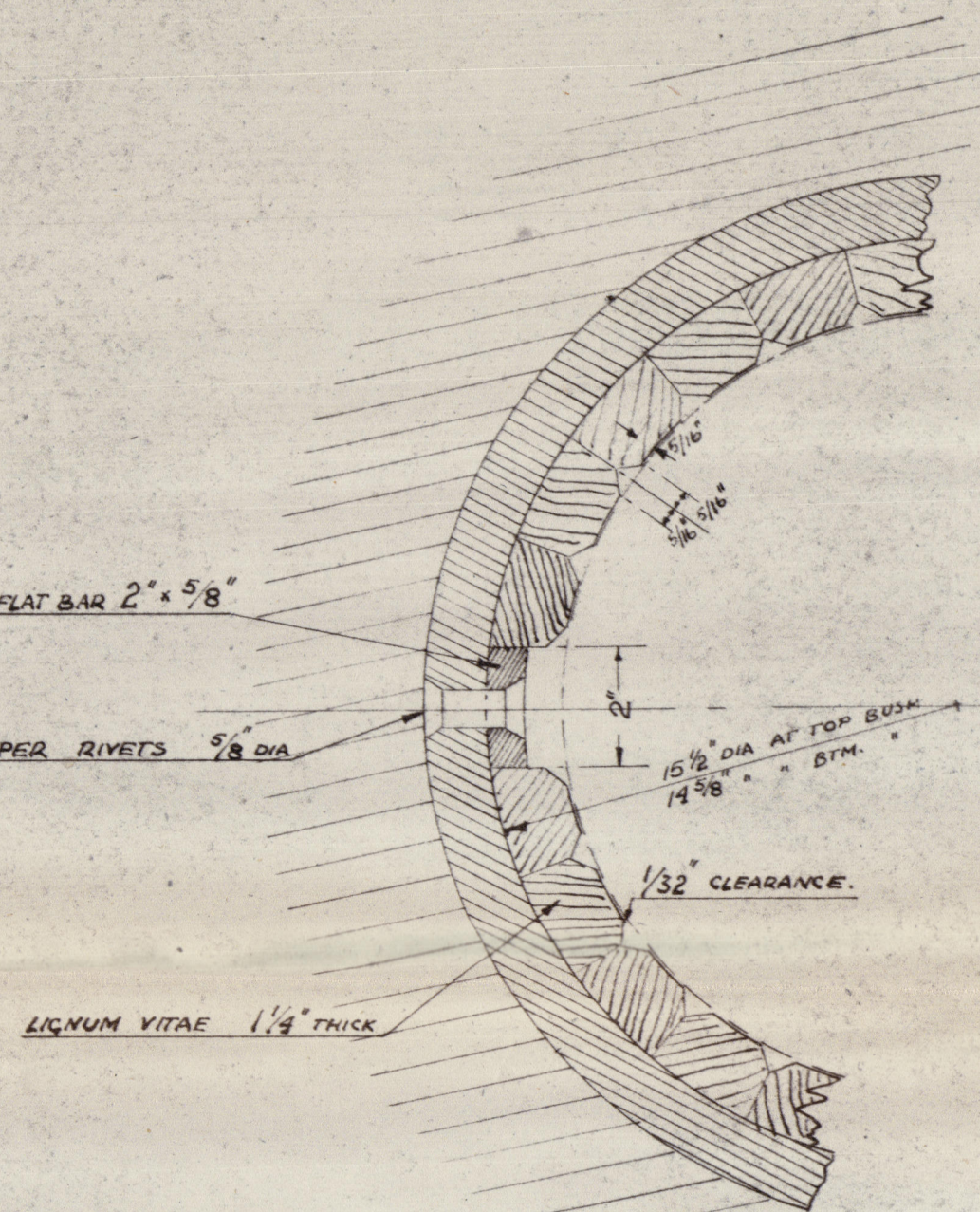
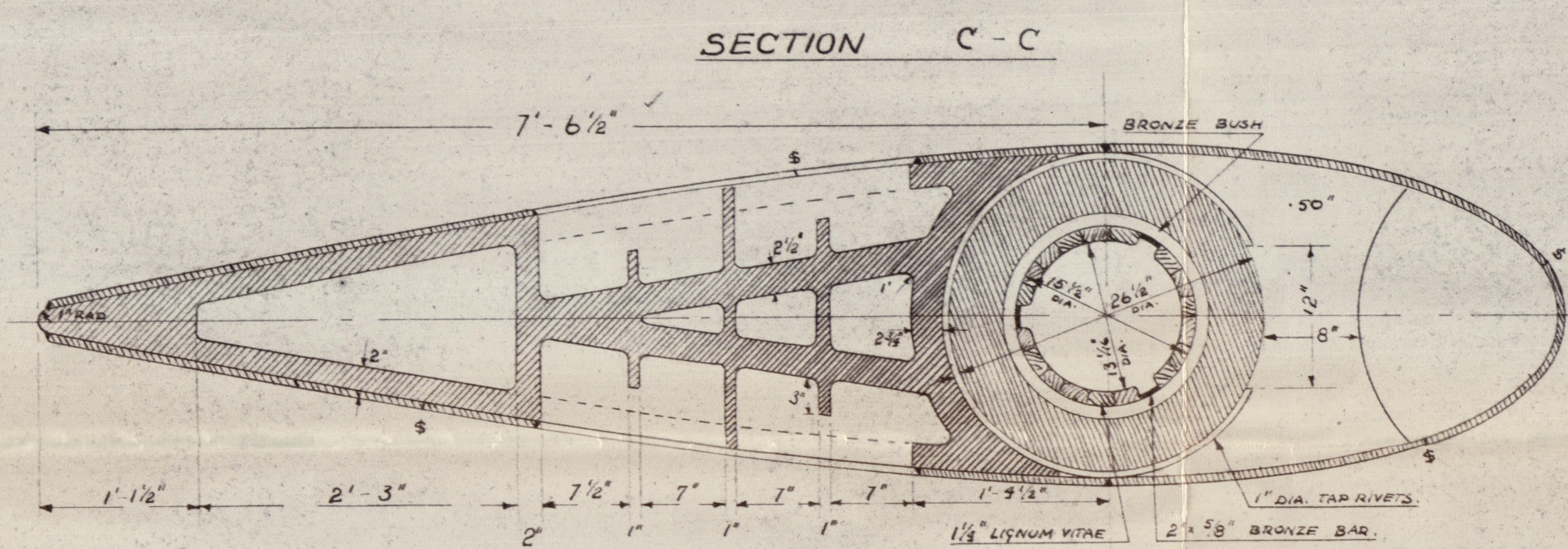


DIMENSIONS: 453'-2 1/2" PP x 61'9 B.M.D. x 34'-0 1/2" D M.D.  
 PASS LLOYDS SURVEY AND TESTS  
 RUDDER FRAME OF CAST STEEL  
 " STOCK OF FORGED STEEL  
 " AREA = 176 1/2 SQ.FT.  
 LLOYDS A.D = 387  
 RUDDER STOCK RUDE DIAMETER = 9 1/2"  
 10% FOR TANKERS = 10 1/2"  
 11" DIAMETER RUDDER STOCK FITTED  
 RUDDER ANGLES MAXIMUM = 40°

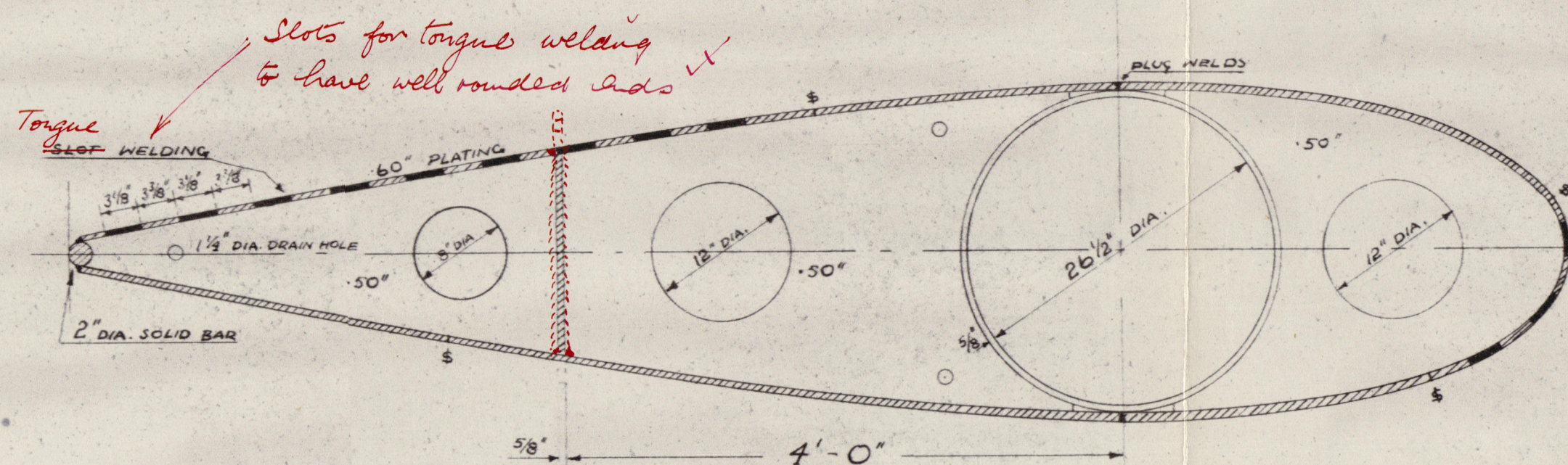
DETAIL OF WELDING  
SCALE 6" = 1 FOOT



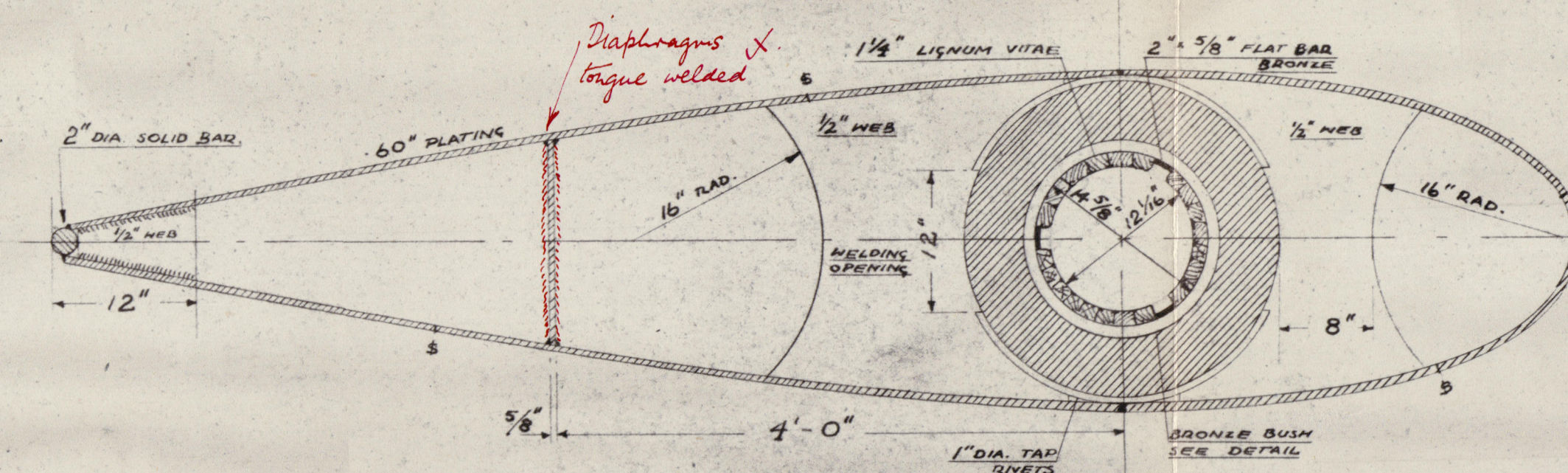
DETAIL OF LIGNUM VITAE BUSHES  
SCALE: 4" = 1 FOOT.



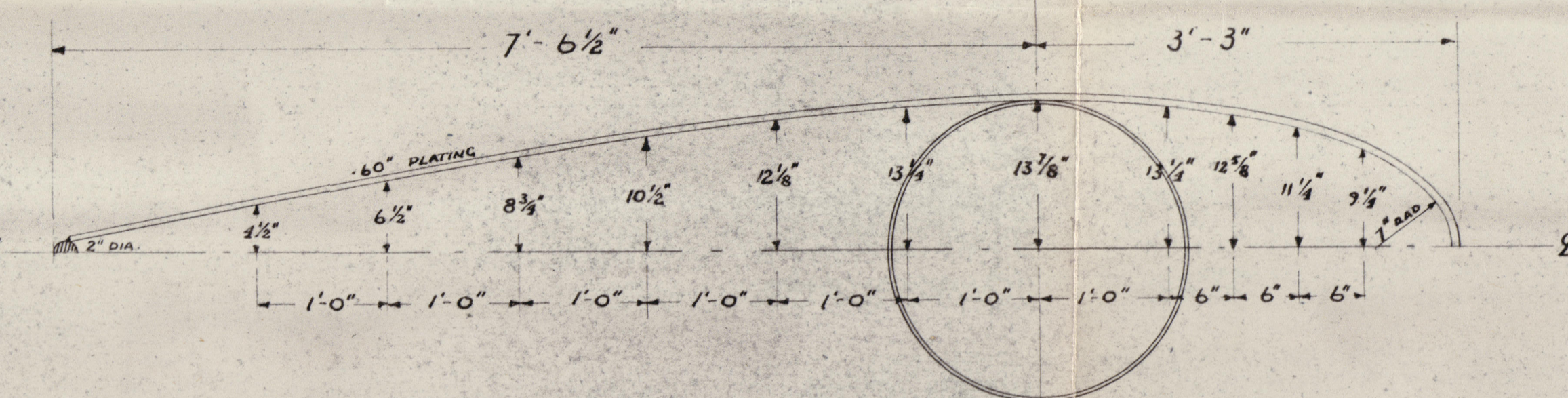
SECTION D-D



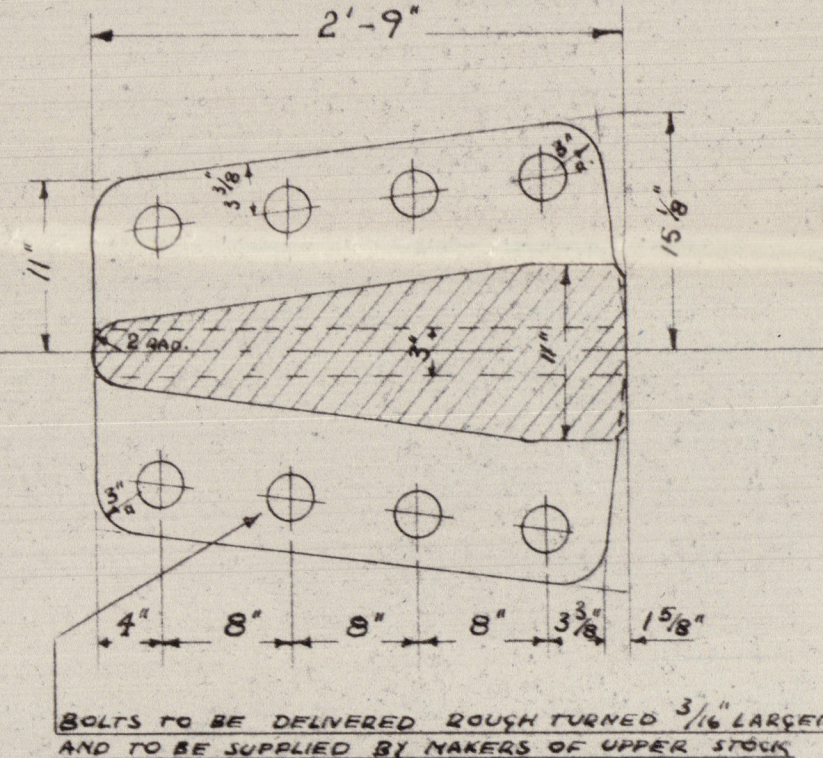
SECTION E-E



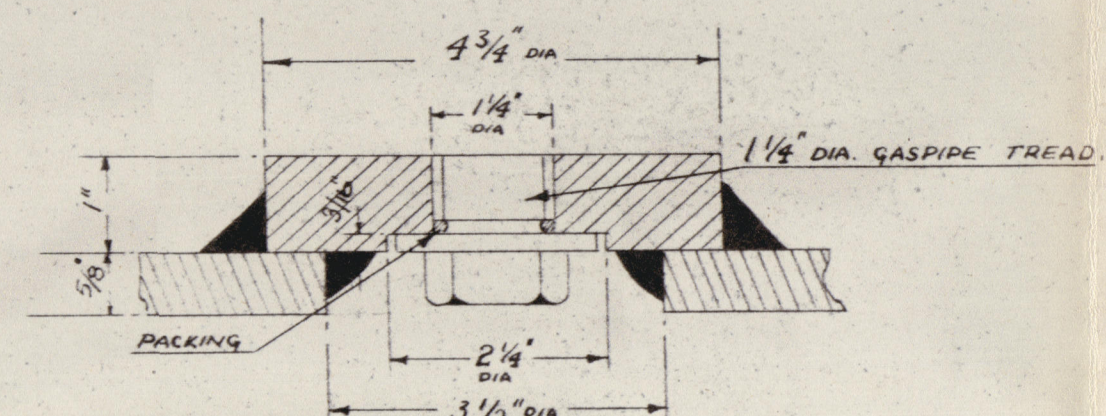
### PROFILE OF RUDDER



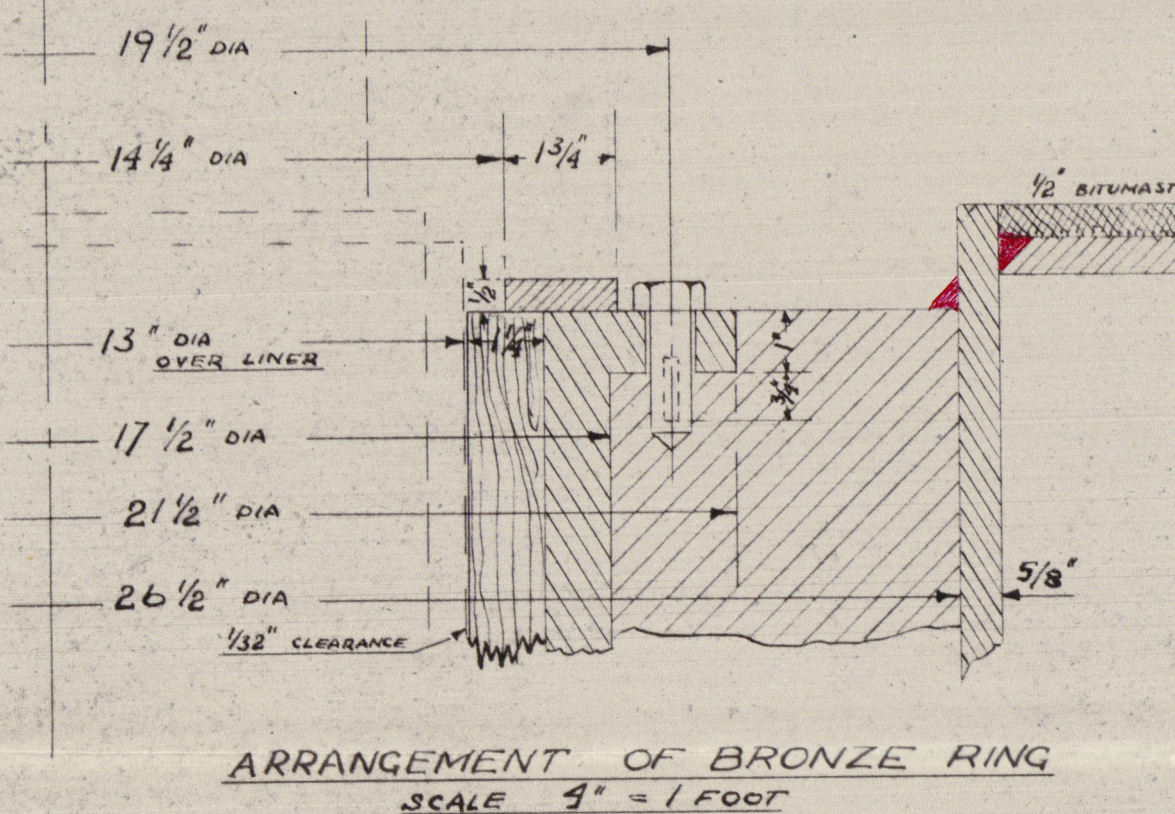
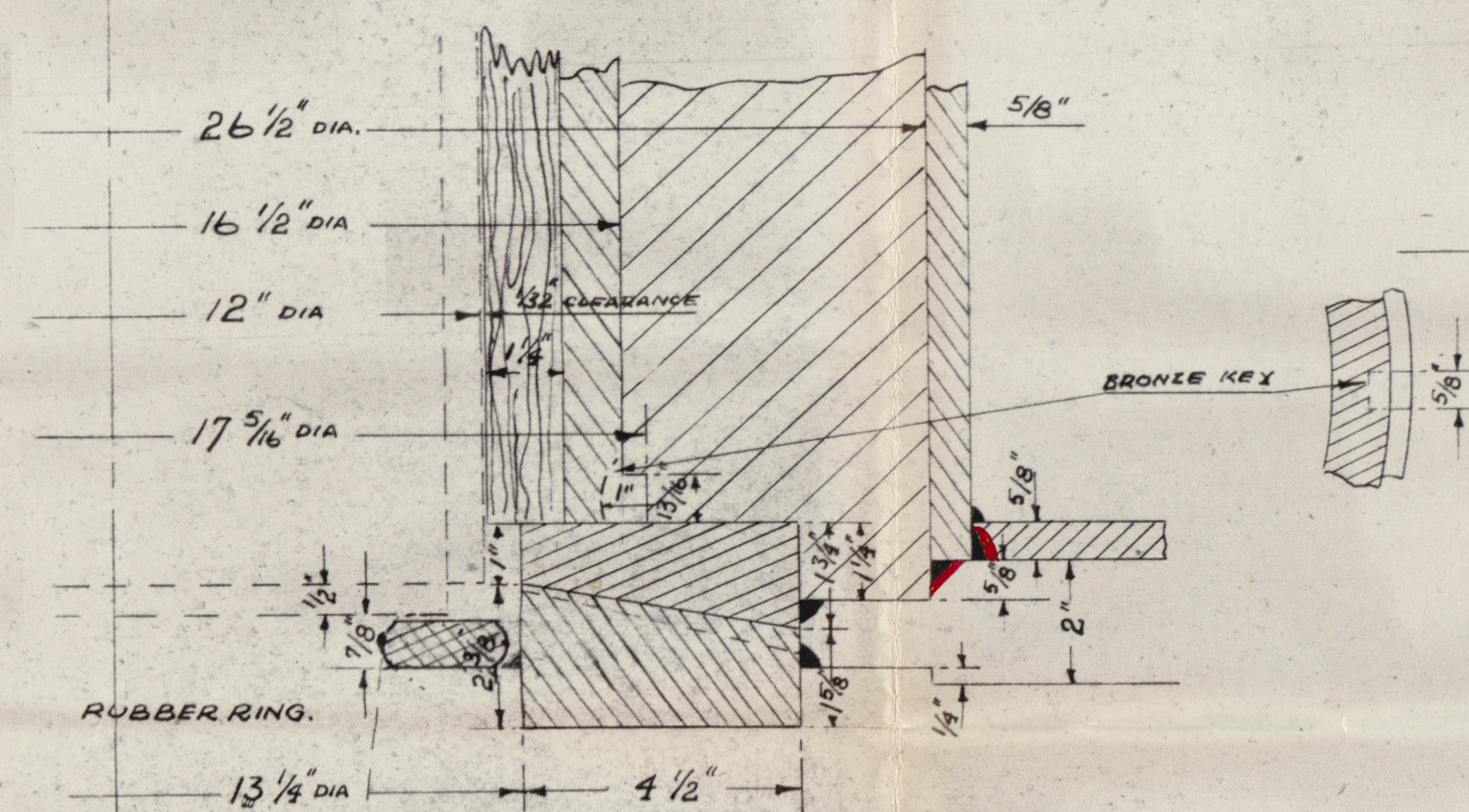
### RUDDER STOCK COUPLING



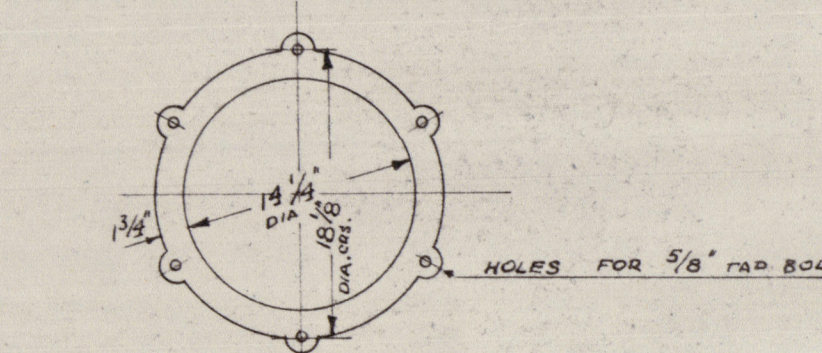
DETAIL OF SCREW PLUG  
SCALE  $\frac{1}{2}" = 1$  INCH



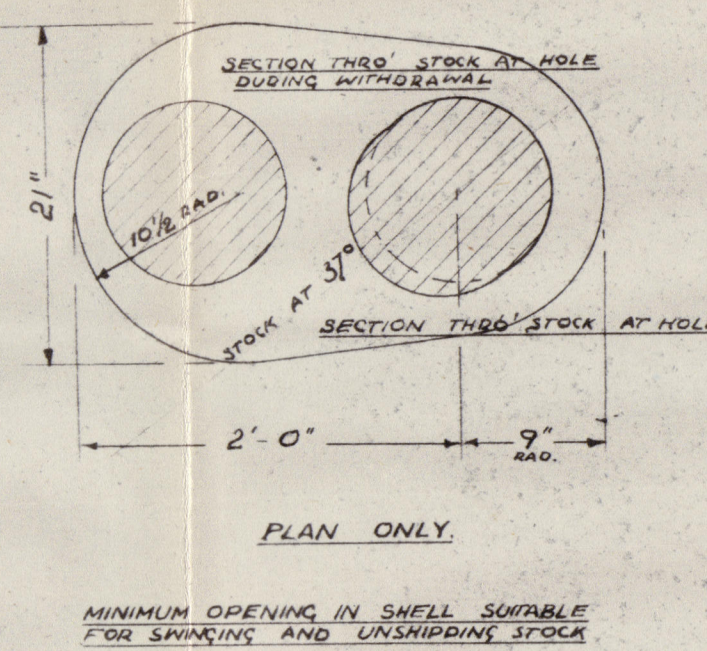
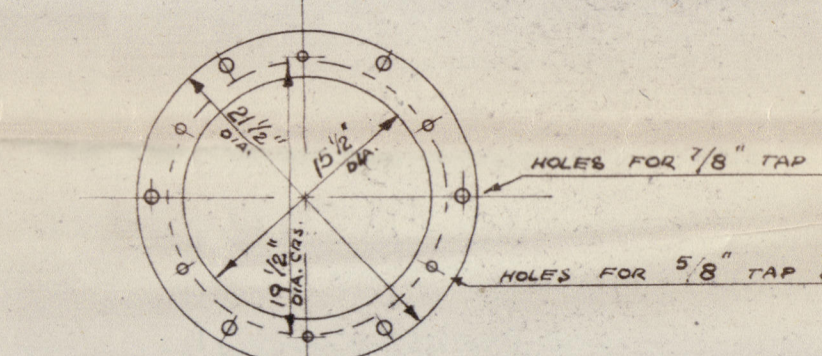
ARRANGEMENT OF BEARING RINGS  
SCALE 4" = 1 FOOT



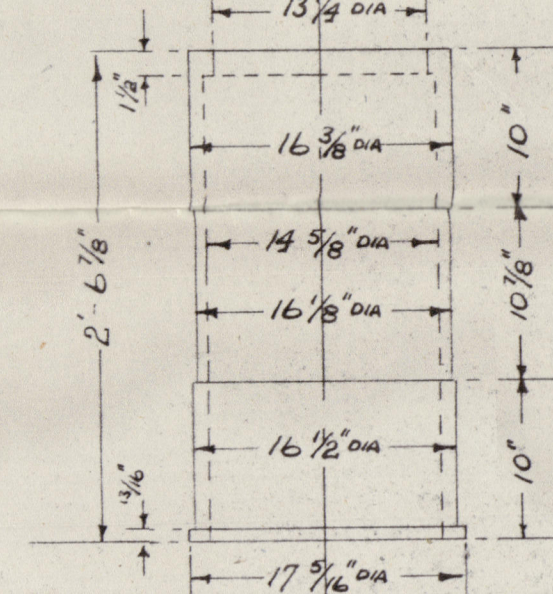
SCALE 1" = 1 FOOT.  
1/2" THICK BRONZE RING



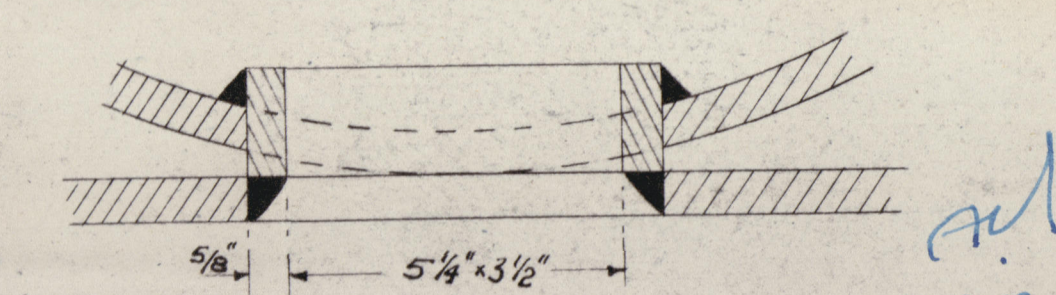
UPPER BRONZE BUSH



LOWER BRONZE BUSH



DETAIL OF HANDHOLE  
SCALE 4" = 1 FOOT








R. & W. HAWTHORN, LESLIE  
& CO. LTD.

SHIP NO. 695

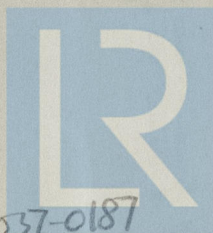
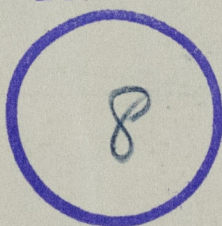
RUDDER PLAN.

MV "BRITISH ENDEAVOUR" 

NEWCASTLE ON TYNE

Report No. 105870.

RECORDS DEPT.,  
LONDON



© 2021

Lloyd's Register  
Foundation

003029-003037-0187