

7 OCT 1946

Index No. 38735
(For London Office only).

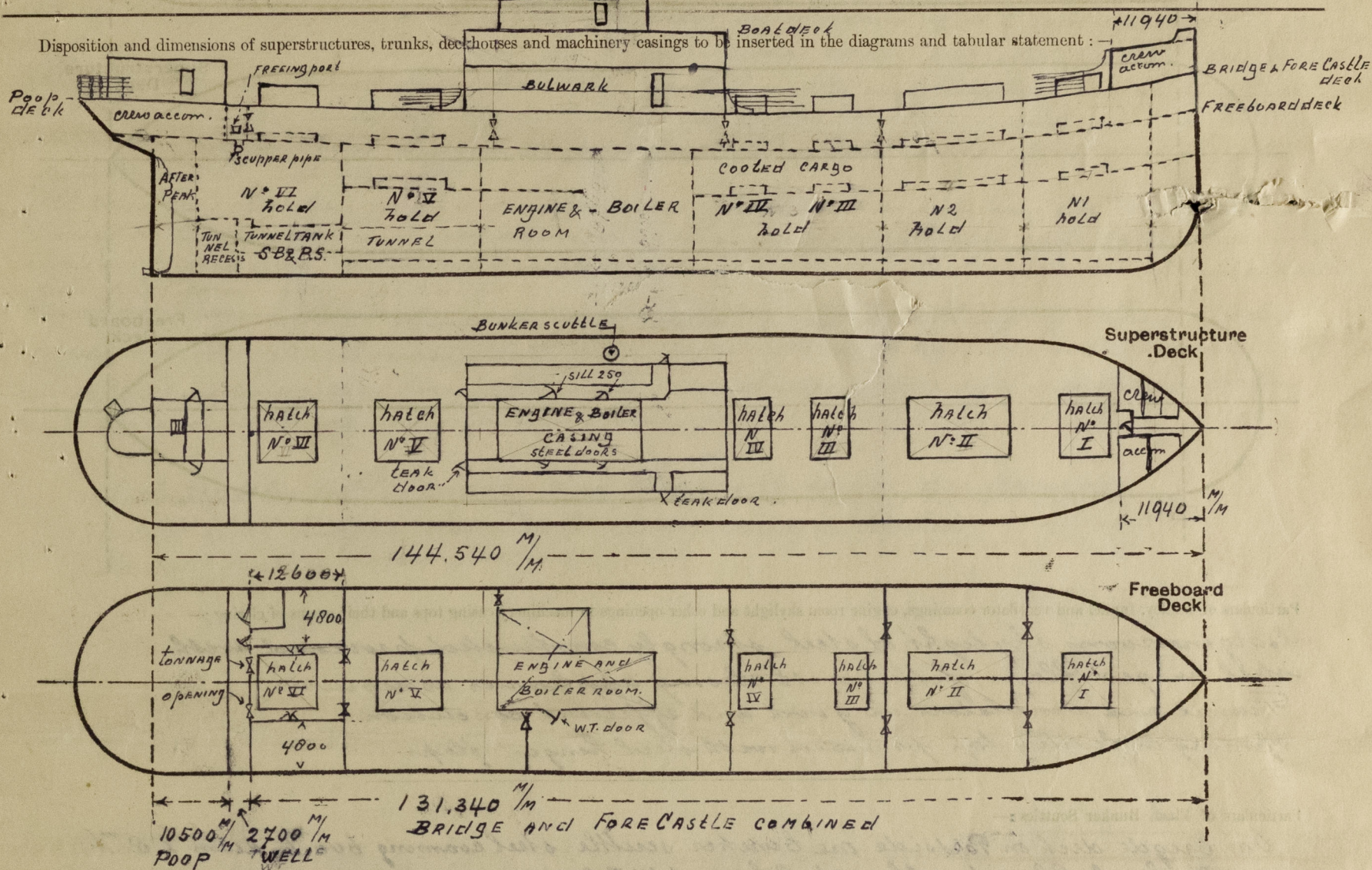
No. 29571

Lloyd's Register of Shipping.

SURVEYS FOR FREEBOARD.

(CONDITIONS OF ASSIGNMENT.)

Ship's Name *S. S. DUIVENDYK* Port of Survey *Rotterdam*
 Official Number *(ex CURACAO)* Surveyor's Signature *H. J. J. J. J.*
 Nationality and Port of Registry *NETHERLAND, ROTTERDAM* Date of Survey *3rd October 1946*



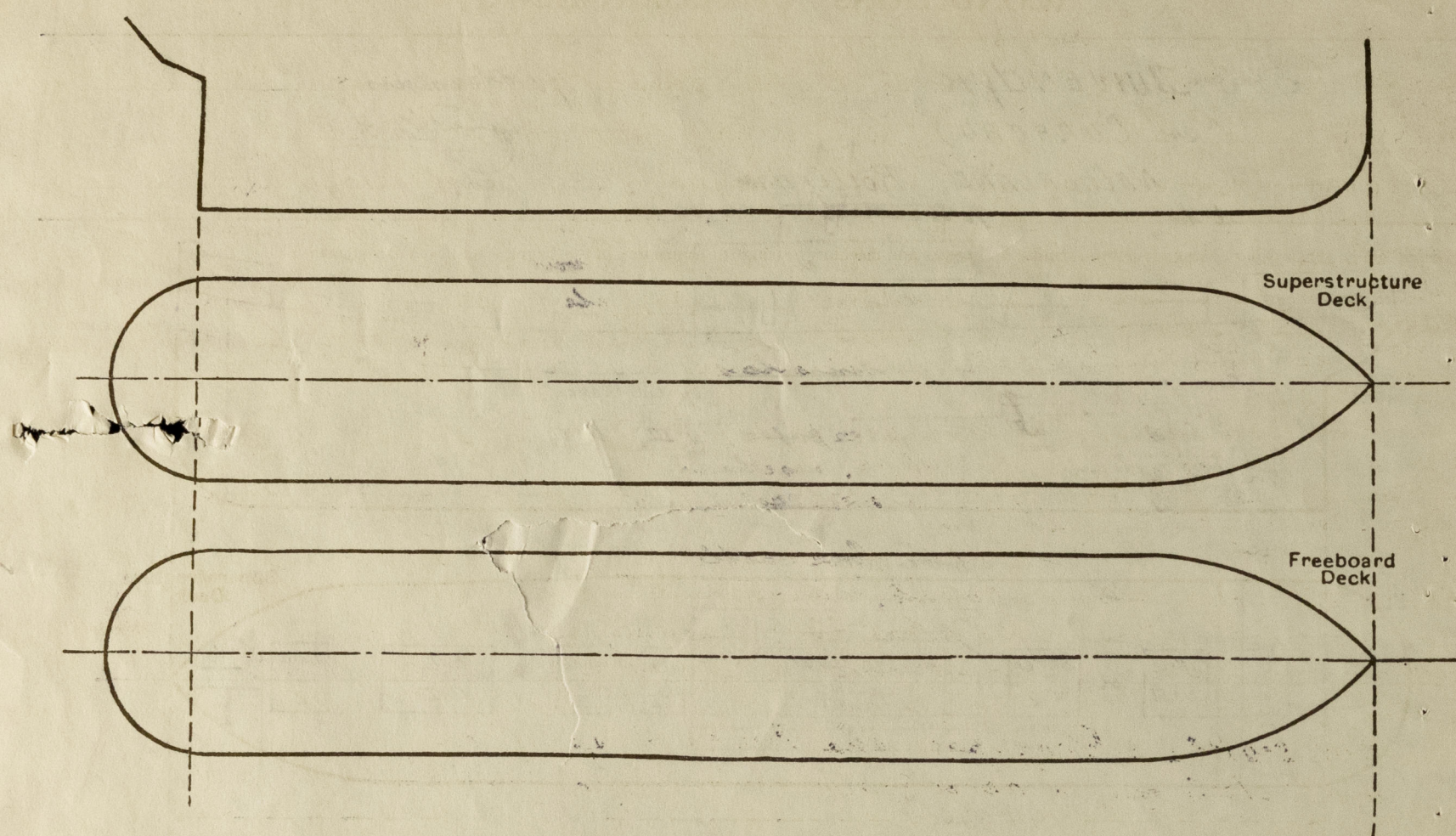
Particulars of Superstructures, Trunks, Casings, Deckhouses.								
	Coaming M/M	Plating M/M	Stiffeners M/M	Spacing M/M	End Attachments of Stiffeners	Size of Openings	Height of Sills M/M	Height of Casings M/M
Poop Bulkhead ...	250x10	8 9.5	5 150x75x9	760	Lugs	no opening		2505
Raised Quarter Deck Bulkhead ...								
Bridge, After Bulkhead ...	250x10	8	5 150x75x9	760	Lugs	one of 1600x600 one of 1600x850 two of 1240x900	420 420 600	2440
Bridge, Forward Bulkhead ...								
Forecastle Bulkhead ...								
Trunk, Aft ...								
Trunk, Forward ...								
Exposed Machinery Casings on Freeboard or Raised Quarter Decks ...								
Exposed Machinery Casings on Superstructure Decks ABOVE BULKHEAD	1000x8	6	5 115x65x7	1800	{brackets at top continuous at bottom	1600x700	320	2600
Machinery Casings within Superstructures not fitted with Class I Closing Appliances ...	450x11/2	6.5	5 130x65x7/2	1800	Lugs	1450x850	450	2440
Deckhouses on BRIDGE DECK	2250x90x12	7	4 90x60x8	900	bracketed to deck	1600x720	280	2440

Particulars of Closing Appliances (state if capable of being manipulated from both sides).

Poop Bulkhead ...	no openings
Raised Quarter Deck Bulkhead ...	
Bridge, After Bulkhead ...	two steel hinged W.T. doors, and two openings closed with portable planks of 70 mm pine for the full height fitted in channel bars riveted to the bulkhead
Bridge, Forward Bulkhead ...	Bridge and fore-castle combined
Forecastle Bulkhead ...	
Exposed Machinery Casings on Freeboard or Raised Quarter Decks ...	
Exposed Machinery Casings on Superstructure Decks ABOVE BULKHEAD	Steel hinged W.T. door closed and operated from both sides
Machinery Casings within Superstructures not fitted with Class I Closing Appliances ...	Steel hinged W.T. doors closed and operated from both sides
Deckhouses on BRIDGE DECK	strong hinged hatch doors closed and operated from both sides

PARTICULARS OF PROTECTION TO OPENINGS, ETC.

The following diagrams should be used to indicate the positions of cargo and coaling hatchways, gangway, cargo and coaling ports, ventilators, companionways, etc., which would affect the seaworthiness of the ship:—



Particulars of fiddle, funnel and ventilator coamings, engine room skylight and other openings in machinery casing tops and their means of closing:—

Engine room skylight of steel, strongly constructed provided with steel hinged flaps, fitted with closing appliances as required.
Tunnel and ventilators in gored and efficient conclusion opening in fiddle top provided with steel hinged flaps.

Particulars of Bunker Scuttles:—

On bridge deck on Portside one bunker scuttle steel coaming 600 mm diam x 8 mm 150 mm high, closed with a steel hinged W.T. cover.

Particulars of Companionways:— To Poop space built in strong steel deckhouse W.T. door 1600 x 400 mm sill 300 mm operated from both side. To counter space steel hatchway 500 x 500 mm height 530 mm above wood deck steel hinged W.T. cover.
To fore peak steel hatchway on Fore castle deck 1120 x 905 mm height 550 mm hatches 60 mm pine battening down arrangement fitted.

Particulars of Ventilators in exposed positions on freeboard and superstructure decks:— Bridge deck

On forward deck 6 vent. 900 x 570 mm diam x .40. Two vent 900 x 320 mm diam x .34
on afterdeck 2 vent 900 x 570 mm diam x .40
on Poop deck 1 vent 520 x 320 mm diam x .34 one ventilator 470 x 185 mm diam x .32

Fore castle deck 2 vent. 540 x 290 mm diam x .34 one vent 450 x 190 mm diam x .34

Swanneck ventilators to accommodation in Poop space and Fore castle space 350 x 200/65 mm diam P₃₅₀

All ventilators are provided with wooden hatches and canvas covers for closing the openings.

All swanneck ventilators are provided with canvas covers for closing the openings.

Particulars of Air Pipes in exposed positions on freeboard, raised quarter, or superstructure decks:—

On fore castle deck one air pipe to fore peak tank 900 x 90 mm diam to N°1 double bottom tank air pipe 900 x 65 mm diam. On Bridge deck air pipes to double bottom tanks and oil fuel bunkers 900 x 65 mm diam, 900 x 75 mm diam and 900 x 100 mm diam. On Poop deck air pipe to after peak tank 900 x 75 mm diam.

All air pipes are provided with canvas covers for closing the openings.

Particulars of Gangway Cargo and Coaling Ports:—

none

S/S. Duivendyk.

Particulars of Scuppers and Sanitary Discharge Pipes:— In afterwell on SB & PS one scupper pipe 45 mm diam Scuppers on bridge deck cut in stringer angle 11 on SB and PS

Scuppers in Bridge space: One Scupper pipe 90 mm diam on SB & PS leading to bilge at after end of Machine room, provided with a self closing cock at the lower end as required. One scupper pipe of 90 mm diam leading to bilge at after end of N°2 hold opening in the foreward deck can be closed by a screw down valve operated from the Bridge deck.

All sanitary discharge pipes from W.C.; wash places etc and scuppers from spaces built in Poop space, discharging through ship side below freeboard deck and are provided with non-return valve in steel castings to shell which can be closed and operated from Poop deck with indicator.

All sanitary discharge and scupper pipes, from W.C. wash places etc built in foreward hulls on Bridge deck and deck above, discharging through ship side below freeboard deck in Engine room, valves fitted in steel castings to shell, which can be closed and operated from platform in engine room.

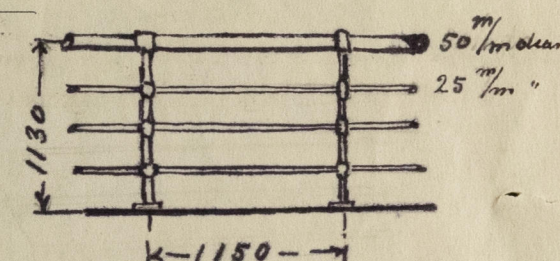
Particulars of Side Scuttles:— W.C. built in fore castle space, discharging through ship side below freeboard deck, non-return valve fitted in steel casting to shell. Scupper pipes of washing places etc, discharging through ship side below freeboard deck no non-return valves fitted.

Side Scuttles in Poop space and Fore castle space, are provided with steel hinged deadlight permanently attached. No side scuttles below freeboard deck.

Vertical distance of Sill of lowest Side Scuttle above top of keel

Particulars of Guard Rails:—

Guard Rails on Fore Castle, Bridge, and Poop deck.



Particulars of Gangways, Lifelines, etc.:— Life lines fitted.

Particulars of Freeing Arrangements.

	Length of Bulwark	Height of Bulwark	Size of Freeing Ports	Number each side	Area each side	Rule area each side
After Well ...	2700	2440	1070 x 520	one	0.54	
Forward Well ...						

State position of each freeing port ... (After Well:— Height above deck edge 180 mm)
(F. and A. position and height above deck edge) (Forward Well:—

State whether the freeing ports are fitted with shutters, bars, or rails, and give particulars of such:— shutter fitted also one rail spaced 260 mm

Additional area where sheer is less than standard.

PARTICULARS OF PROTECTION TO OPENINGS, ETC.

HATCHWAYS ON FREEBOARD AND SUPERSTRUCTURE DECKS.										
K - BRIDGE DECK										
*K - FREEBOARD DECK (BRIDGE SPACE) -										
Description of Hatchway	N°1	N°2	N°3-4	N°5	N°6	N°1	N°2	N°3-4	N°5	N°6
Dimensions of Hatchway	4000x6000	13500x6000	5400x6000	9000x6000	8100x6000	4000x6000	13500x6000	4600x6000	9000x6000	8100x6000
COAMINGS										
Height above Deck	800	800	800	800	800	300	300	300	300	300
Thickness Sides	.44	.44	.44	.44	.44	.44	.44	.44	.44	.44
Thickness Ends	.44	.44	.44	.44	.44	.44	.44	.44	.44	.44
Stiffeners	5	4	1	3	2	✓	✓	✓	✓	✓
Brackets, Stays	3	4	1	3	2	✓	✓	✓	✓	✓
HATCH BEAMS										
Number	5	9	3	4	5	5	9	3	4	5
Spacing	1200	1360	1380	1150	1370	1200	1360	1290	1150	1370
Scantling and Sketch	200x14	215x14	215x14	200x14	215x14	200x15	215x15	180x14	200x15	215x15
	470x10	470x10	470x10	470x10	470x10	400x10	480x10	400x10	400x10	480x10
	200x14	215x14	215x14	200x14	215x14	200x15	215x15	180x14	200x15	215x15
Bearing Surface	75	75	75	75	75	75	75	75	75	75
FORE AND AFTERS										
Number										
Spacing										
Unsupported Lengths										
Scantling* and Sketch										
Bearing Surface										
HATCH COVERS										
Material	pine	pine	pine	pine	pine			pine		
Thickness	60	60	60	60	60			65 mm		
How fitted	long	long	long	long	long			long		
Bearing Surface	75	75	75	75	75					
Spacing of Cleats	600	600	600	600	600			600		
Number of Tarpaulins	3	3	3	3	3			2		
<p>*Are wood fore and afters steel shod at all bearing surfaces? <i>yes</i></p> <p>Are battens and wedges efficient and in good condition? <i>yes</i></p> <p>Are tarpaulins in good condition and in accordance with rule requirements? <i>yes</i></p> <p>Are lashings provided in accordance with rule requirements? <i>yes</i></p>										

Particulars of any special features:—

Endorsement at first survey and at surveys for renewal of Certificate:—

The fittings and appliances are in accordance with the particulars shown on this form (or as now modified) and are in good condition.



© 2021

Lloyd's Register Foundation