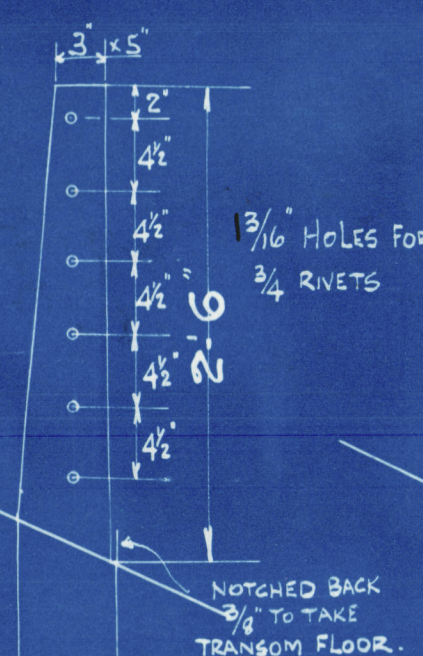
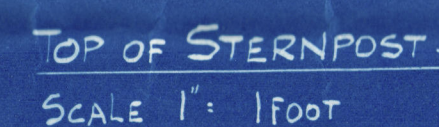


№ 327

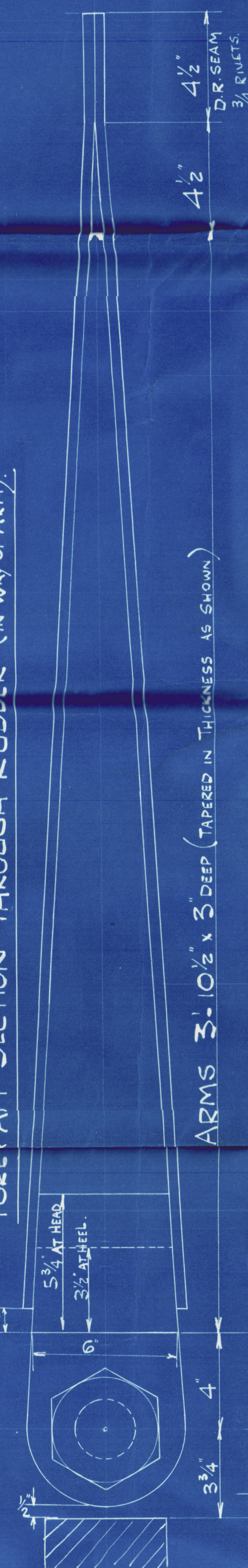
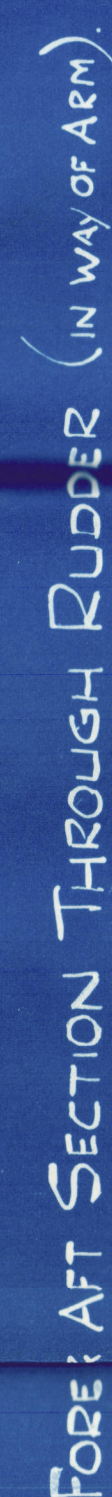
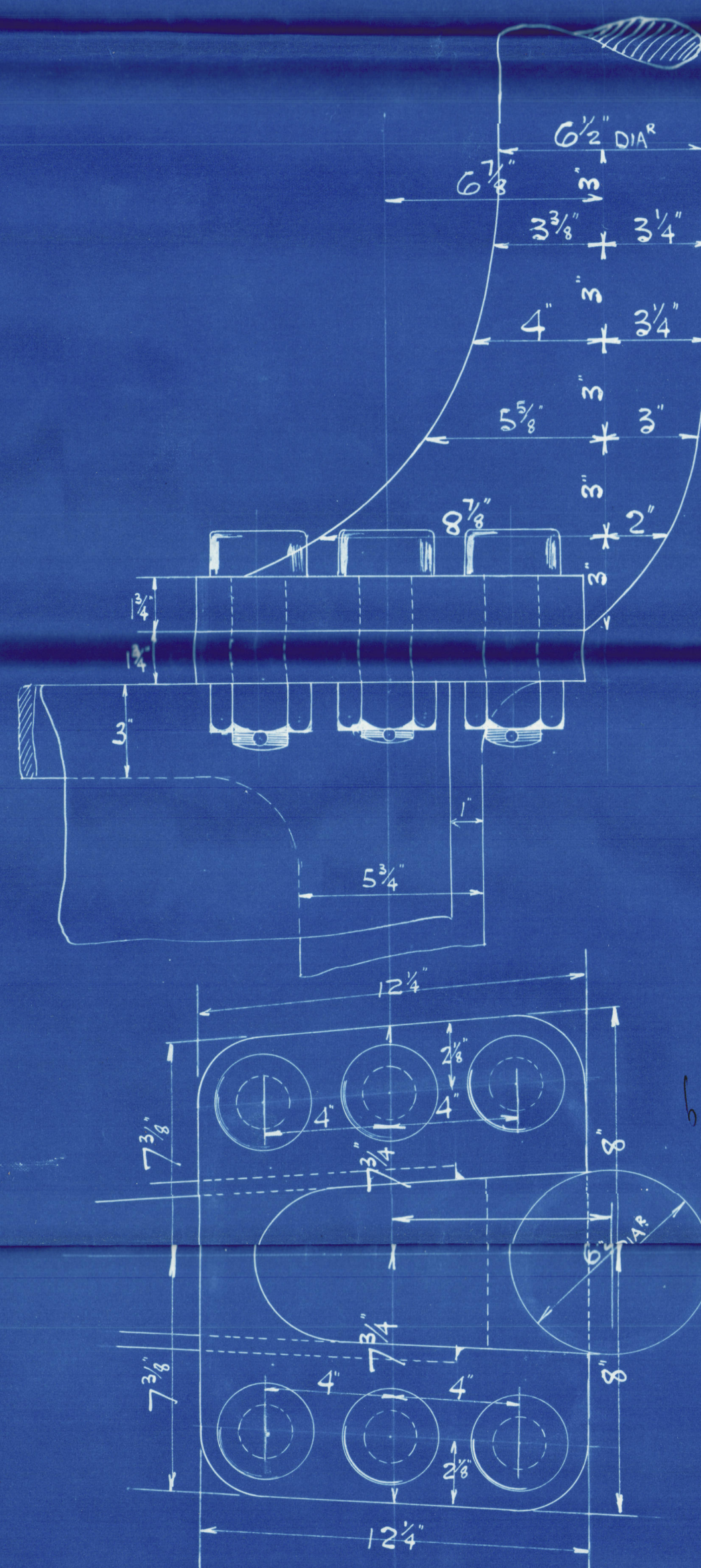
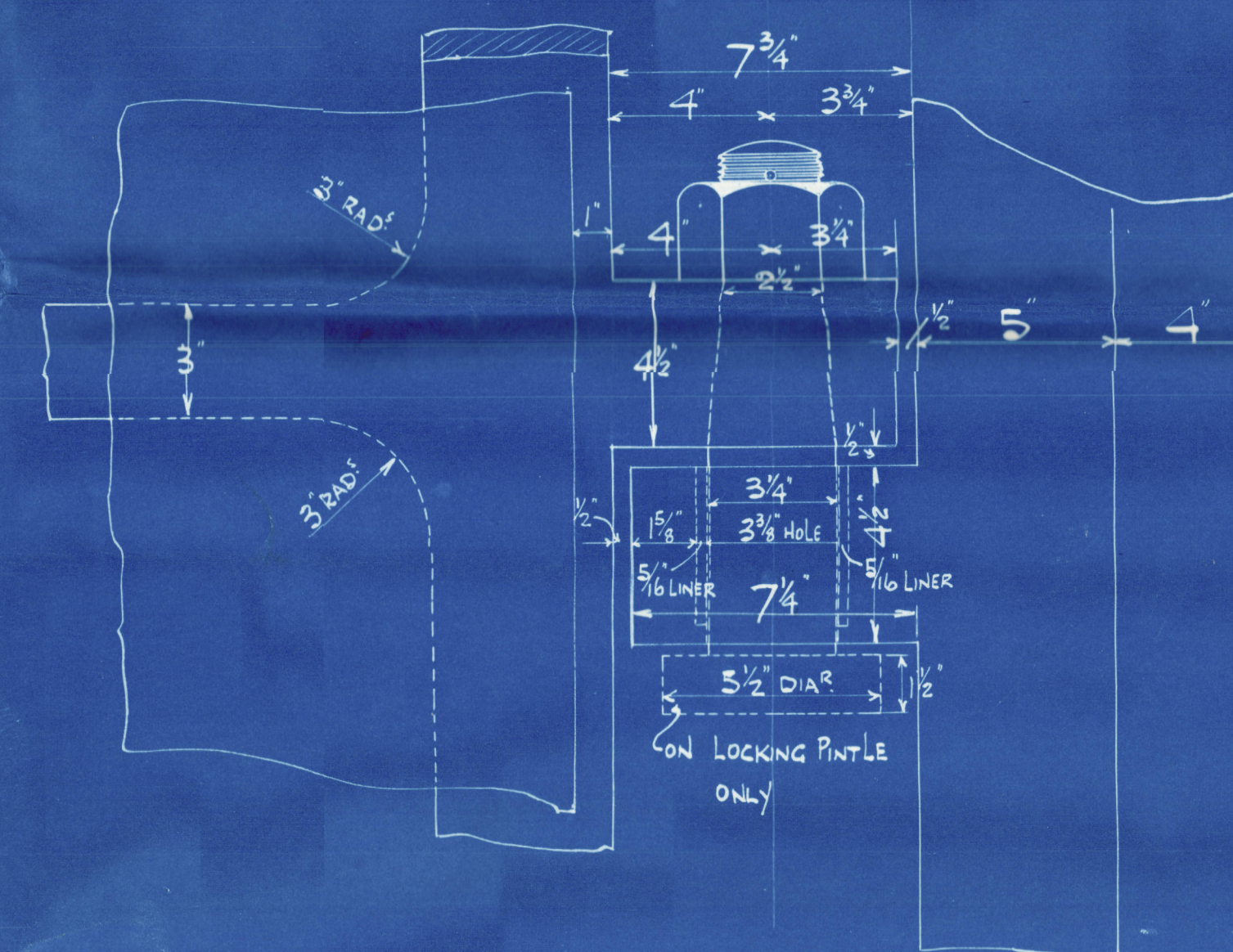
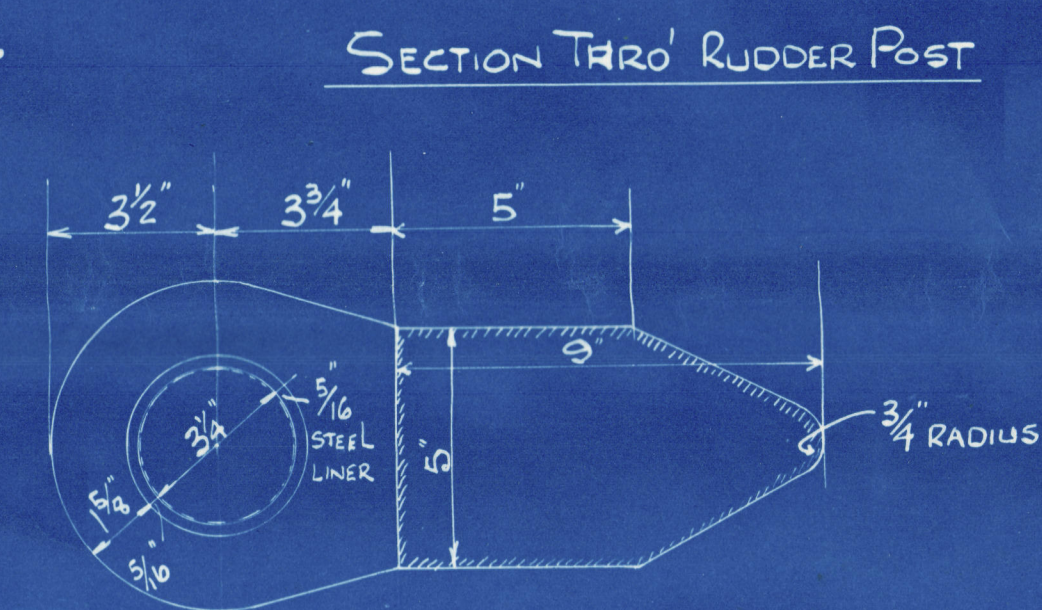
SCALES  $\frac{3}{4}$ " & 3" = 1 FOOT.

TO BE OF FORGED IRON OR STEEL.

• COUPLING:

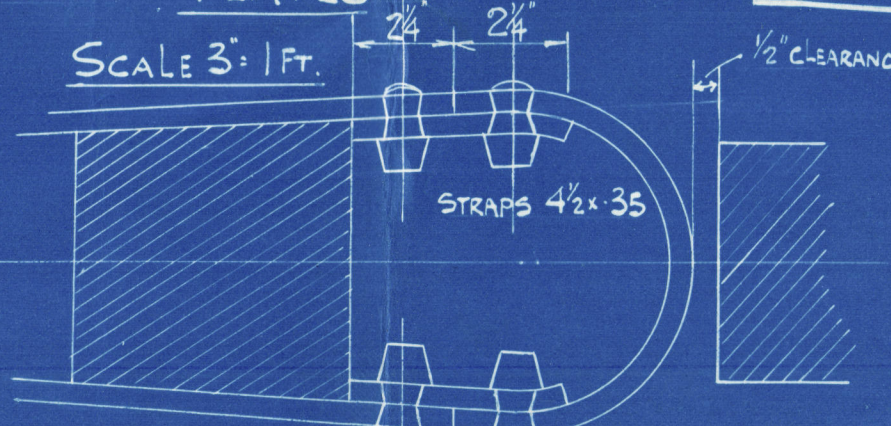


CALCULATION OF RUDDER AREA ETC.				
SECT.	ORDINATE	S.M. FUNCTION	± ORD.	FUNCTIONS (M)
1	1.625	1/2	.81	.66
1 1/2	4.100	2	8.20	16.8
2	4.580	1 1/2	6.87	15.73
3	4.625	4	18.50	42.74
4	4.625	2	9.25	21.37
5	4.625	4	18.50	42.74
6	4.625	1 1/2	6.94	16.03
6 1/2	4.480	2	8.96	20.07
7	2.625	1/2	1.31	1.72
			79.34	177.8
AREA =			79.34 × $\frac{2.54}{79.34}$	67.17
CENTRE OF GRAVITY =			$\frac{177.8}{79.34}$	2.24
CENTRE OF PIN LUG TO BACK OF POST = '33'				
A × D =			67.17 × 2.57	172.63
SPEED NOT EXCEEDING 10 KNOTS.				
RULE DIAS OF RUDDER HEAD. 6 1/4				



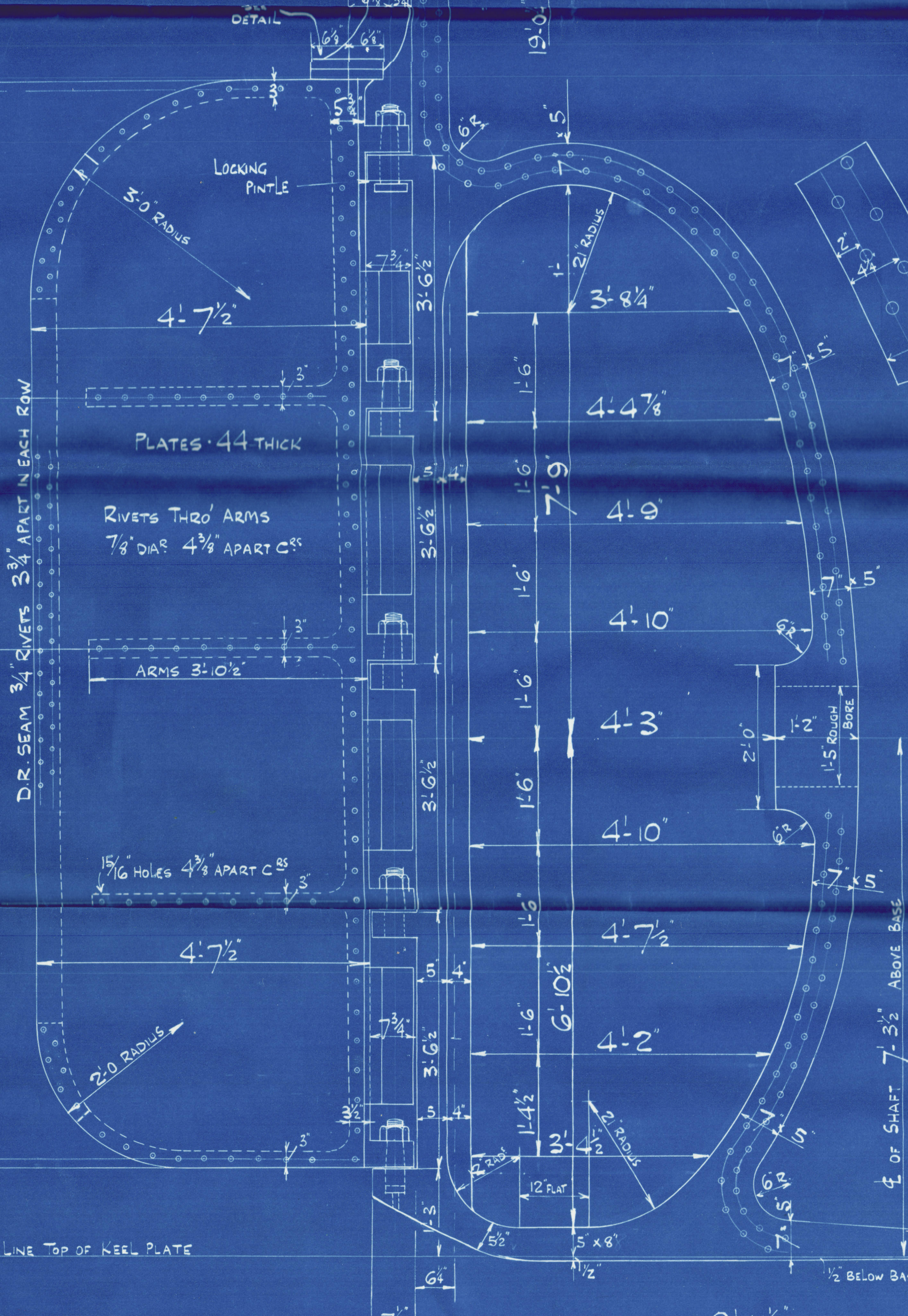
## SECTION THRO' FILLING IN PLATES

SCALE 3" = 1 FT.

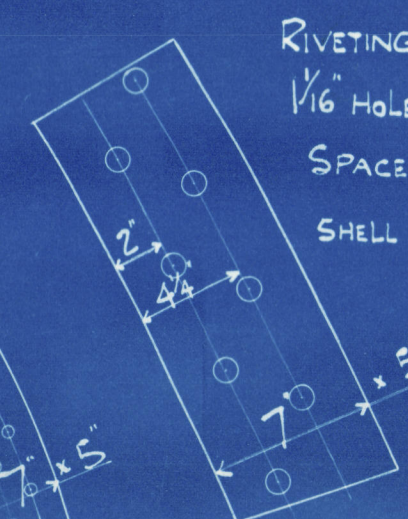


3/4" RIVETS  
4 1/2" APART

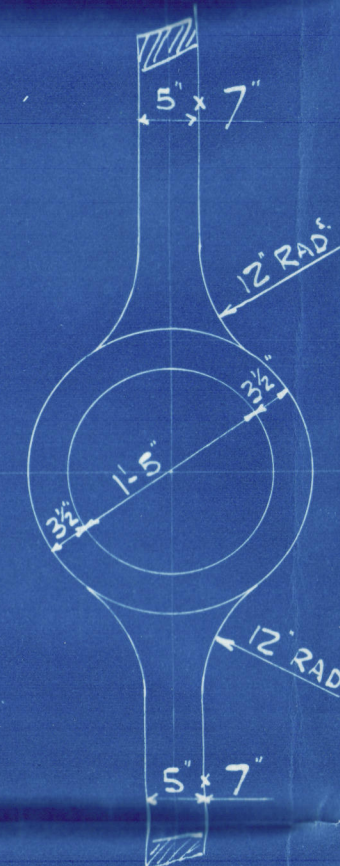
TOP & BOTTOM PLATES  
TO BE WELDED ON.



RIVETING IN STERNFRAME.  
 $\frac{1}{16}$ " HOLES FOR 1" RIVETS.  
 SPACED 5" APART CENTRES  
 SHELL PLATING



# PROPELLER BOSS



### ALTERNATIVE PINTLES WITH CIRCULAR NUTS

FIRST LONG: N<sup>o</sup>. L x D :  $236.5 \times 17.91$   
: 4236

APPROXIMATE SECTIONS OF FRAME FOR

FULL SIZE TEMPLATES TO BE  
SUPPLIED TO MAKERS.



3

SUNDERLAND.

S. P. Austin & Son's

No. 324

Stem Frame & Rudder.

9/8 Colonel Crompton

SUNDERLAND PT. NO. 31284



© 2021

Lloyd's Register  
Foundation

003029-003037-006