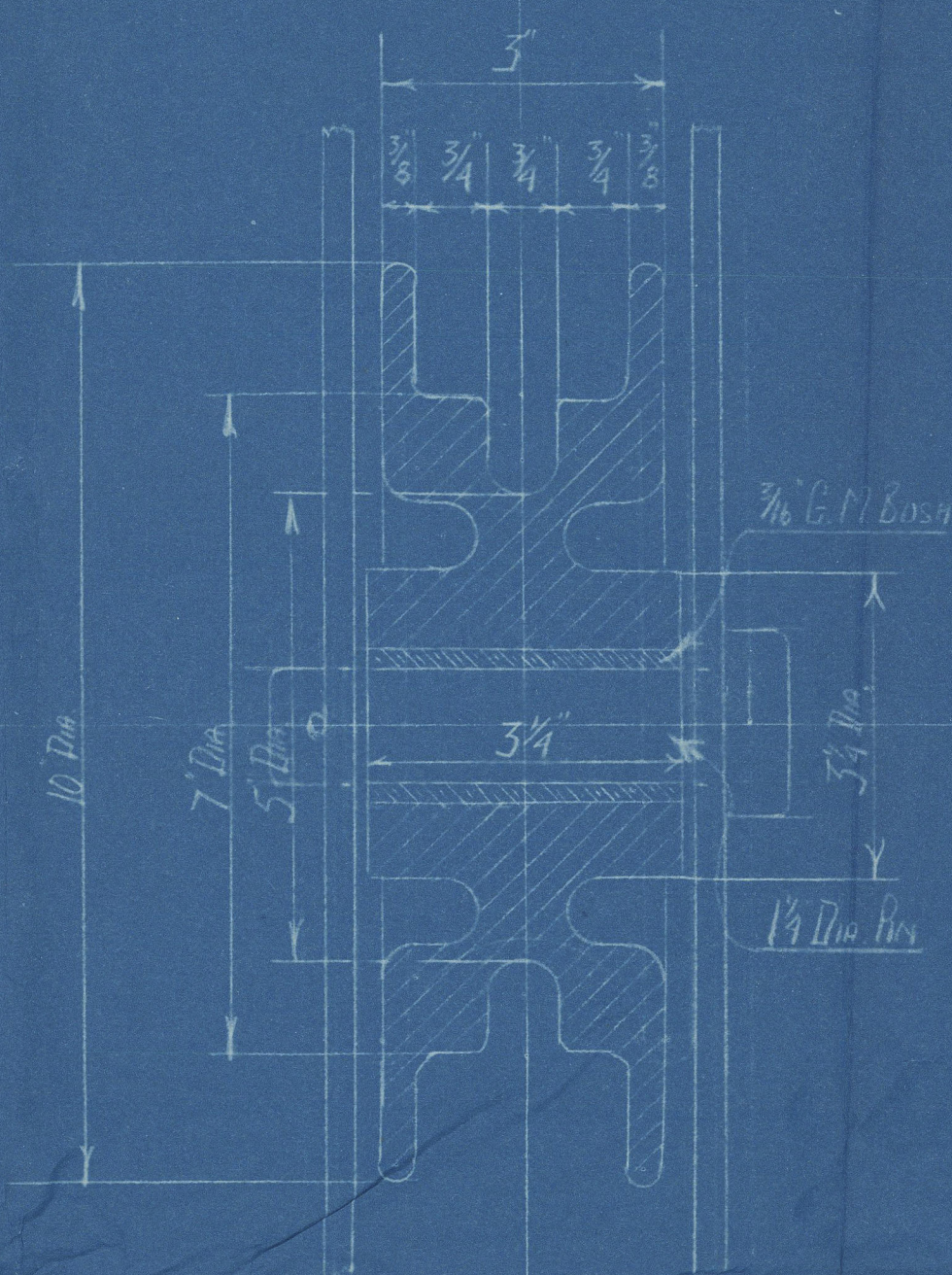


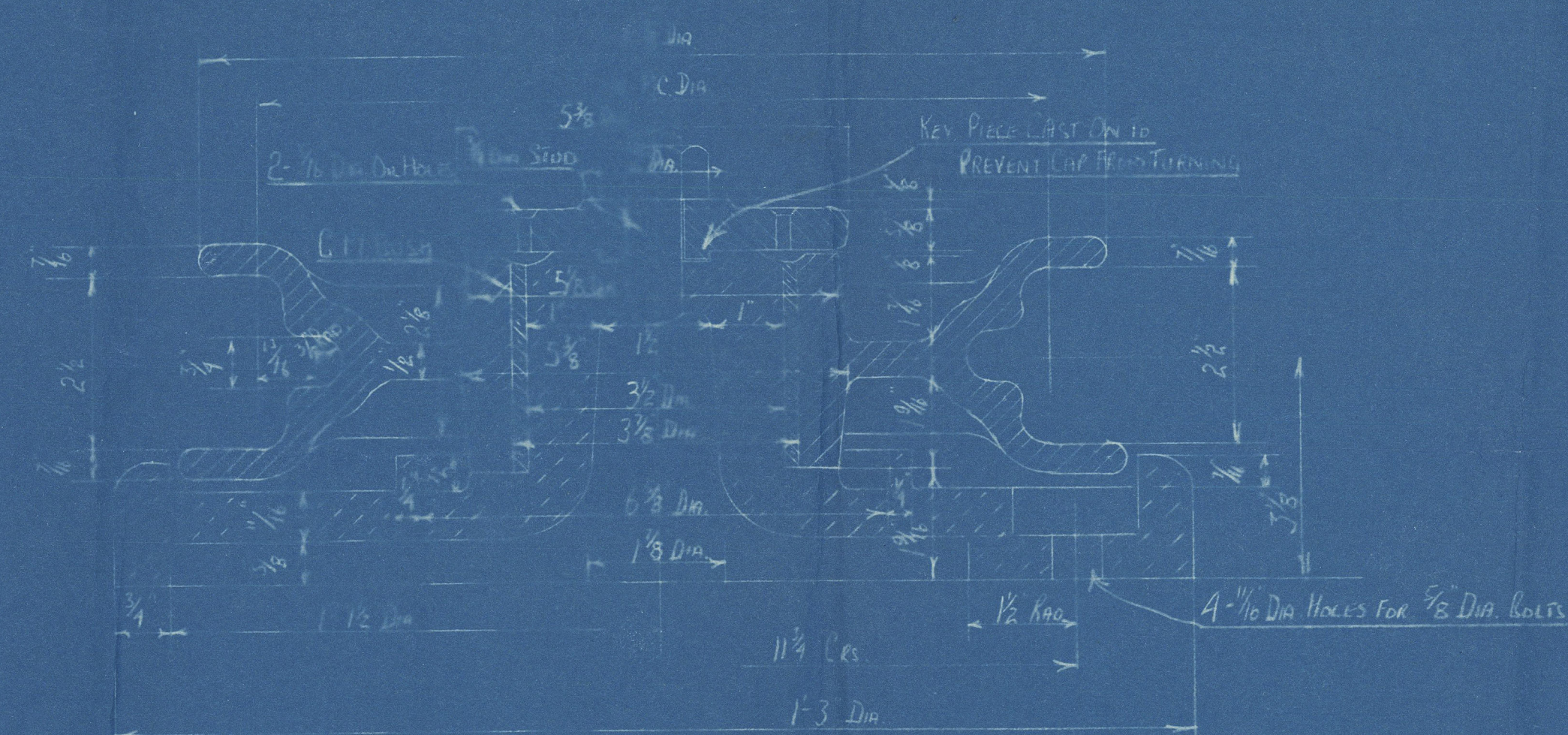
DETAIL OF C.I. GUIDE PULLEYS

HEAD 2 OFF EACH
SCALE - 3/4" = 1 FT.



DETAIL OF C.I. SHEAVES

HEAD 2 OFF

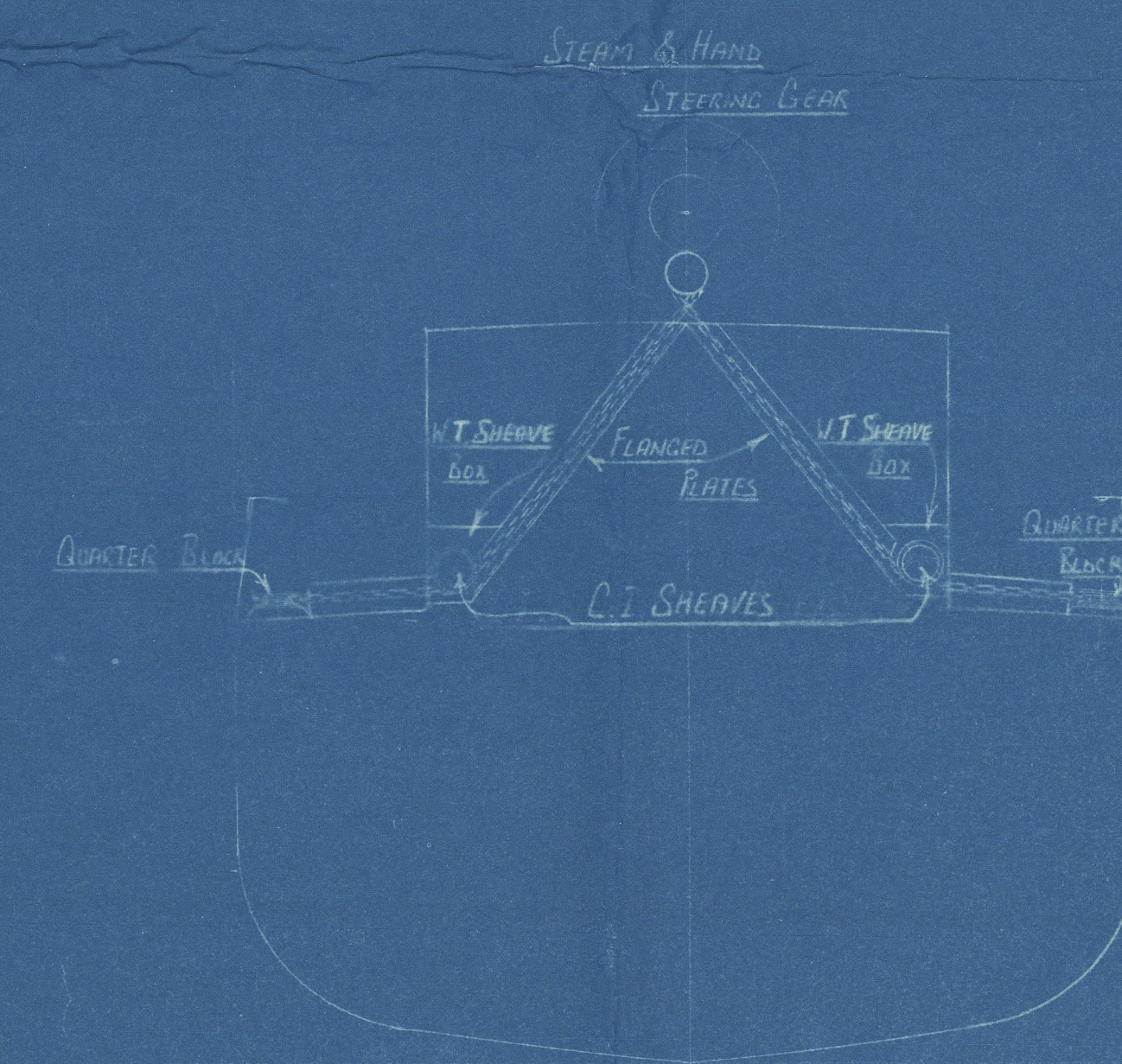
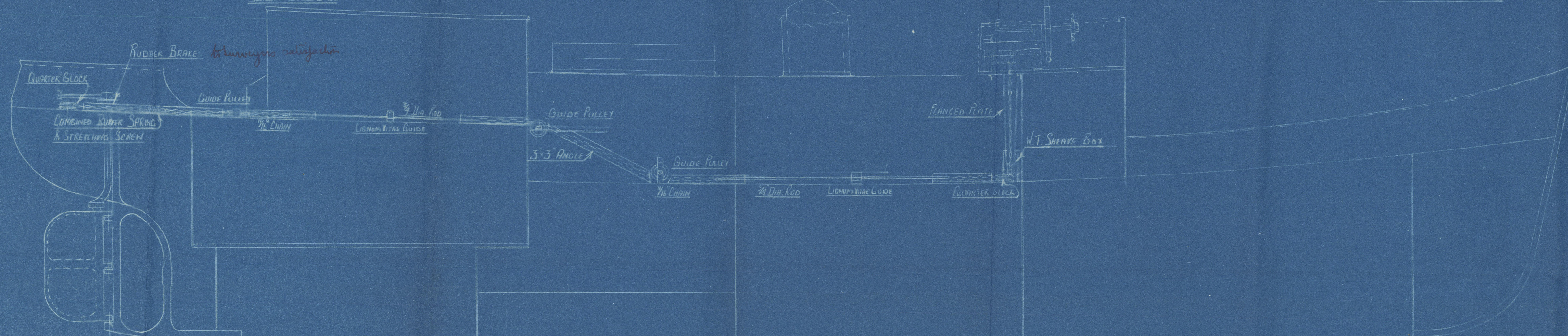


DETAIL OF QUARTER BLOCK

BASE CAST STEEL
SHEAVE & LIFT CAST IRON

HEAD 1 OFF

FOR 1/2" DIA CHAIN



SECTION AT BULK³⁵

SPARE GEAR TO BE SUPPLIED (Not required by Rule in this case)

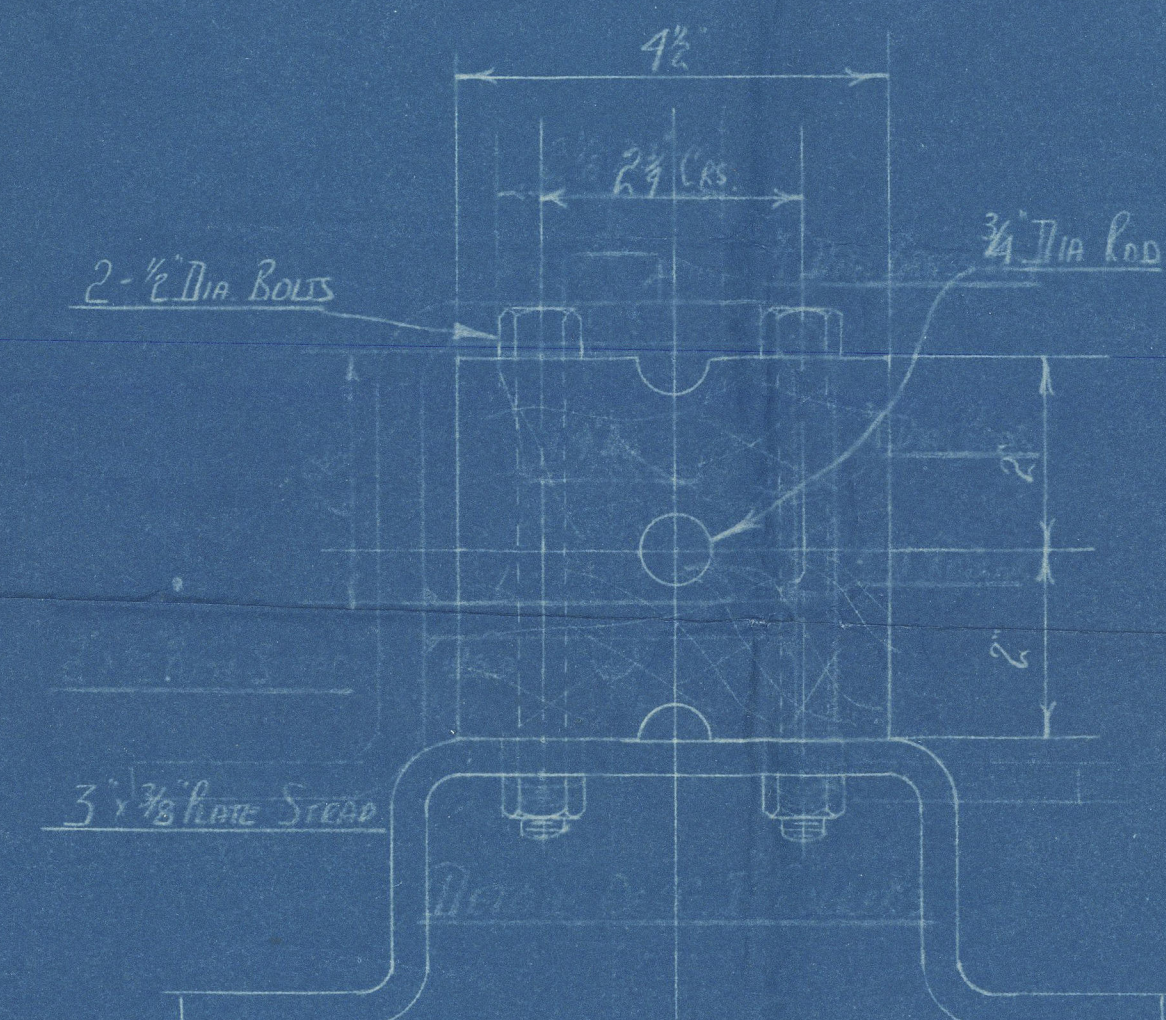
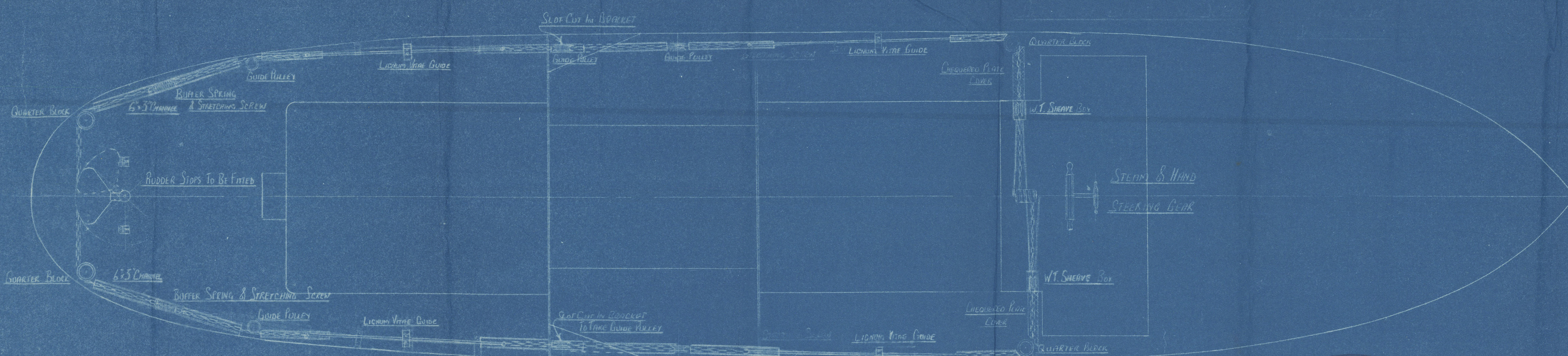
1 BUFFER & STRETCHING SCREW

18" O' OF 1/2" DIA CHAIN

4 SIMPLES

4 CONNECTING LINKS

4 ROD PINS



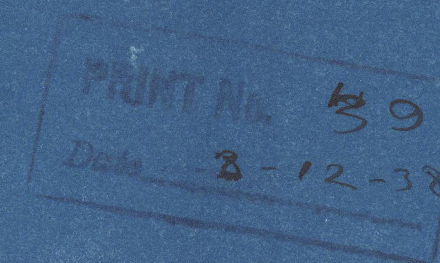
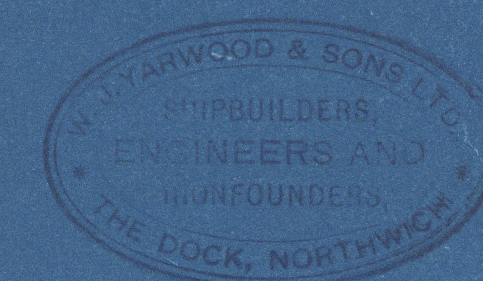
DETAIL OF LIGNON VIRE GUIDE

HEAD 4 OFF

SCALE 3/4" TO 1 FT.

AS MARKED

ARRANGEMENT OF STEERING LEADS FOR
SINGLE SCREW STEAM TENDER



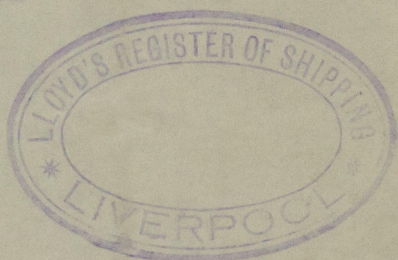
W.J. YARWOOD & SONS LTD	THE DOCK	DATE 16-11-38
SHIP N° 627		
URG. N° 5074		
DESIGNED BY C.M.W.	CHECKED BY	
TRACED BY	TRACED BY C.M.W.	



S/S. No 627 7

W J Yarnall & Co

Shipping Arrangements



S. S. Trefoil

LIVERPOOL

Report No. 112416



© 2020

Lloyd's Register
Foundation

01/30/18 - 01/30/22 - 01/30