

Lloyd's Register of Shipping.  
SURVEYS FOR FREEBOARD.  
(CONDITIONS OF ASSIGNMENT.)

CRONULLA

ex "Admiral Fraser"

Port of Survey Sunderland

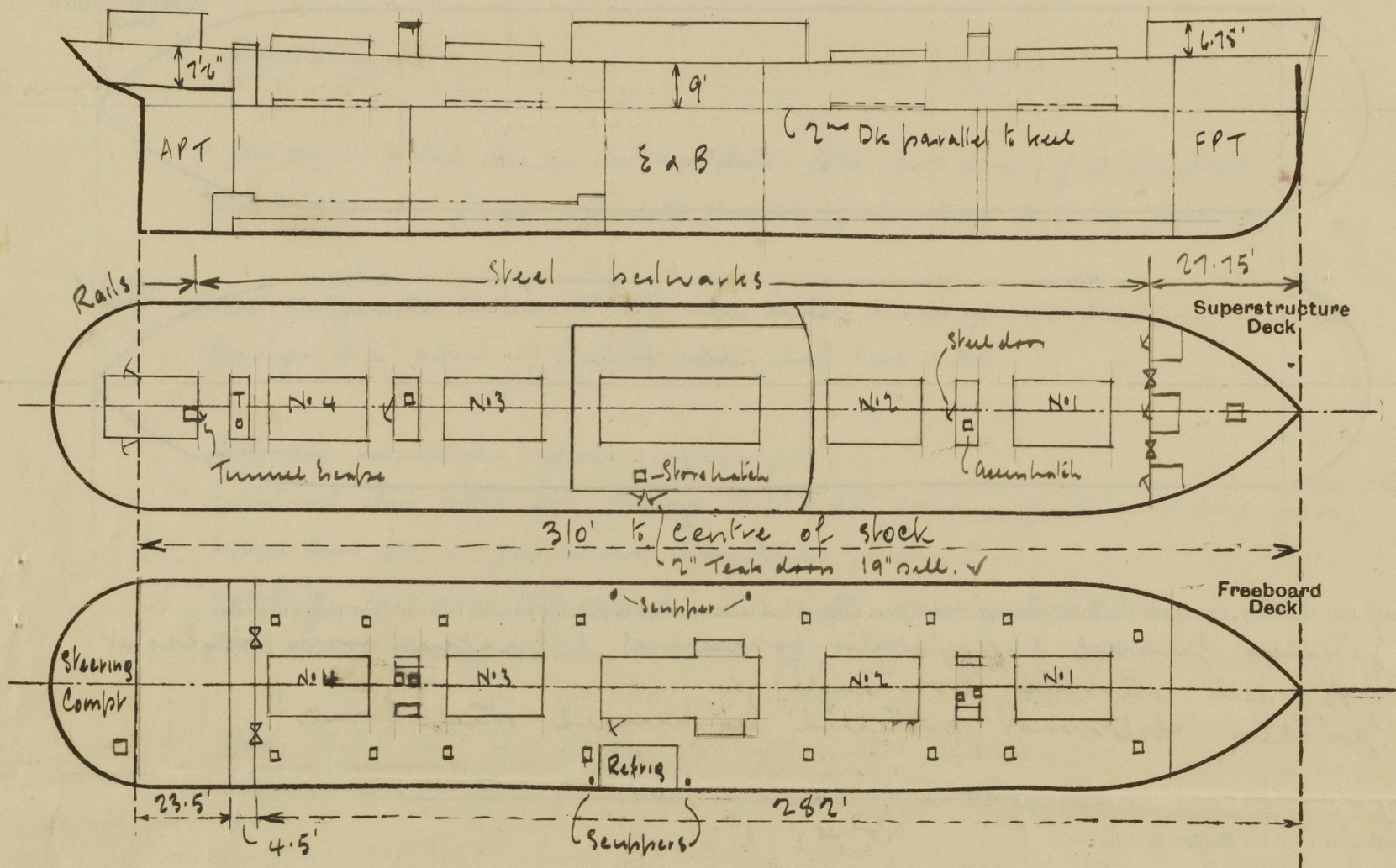
Official Number 182879

Surveyor's Signature Jas & Remme

Nationality and Port of Registry British London Hong Kong

Date of Survey Whilst building

Disposition and dimensions of superstructures, trunks, deckhouses and machinery casings to be inserted in the diagrams and tabular statement :—



Particulars of Superstructures, Trunks, Casings, Deckhouses.

	Coaming	Plating	Stiffeners	Spacing	End Attachments of Stiffeners	Size of Openings	Height of Sills	Height of Casings
Poop Bulkhead ... ..	30 ✓	26 ✓	4+3+36 L ✓	36" ✓	Deck bars	✓	✓	7'-6" ✓
Raised Quarter Deck Bulkhead ...	✓							
Bridge, After Bulkhead ... ..	✓	30 ✓	4 1/2+3+30 L ✓	36" ✓	✓	20 4'+3'	2' ✓	10'-6" ✓
Bridge, Forward Bulkhead ... ..	✓							
Forecastle Bulkhead ... ..	✓	26 ✓	3+3+31 L ✓	36" ✓	✓	3-4'-5"+1'-10" 2-4'-5"+3'	18"	6'-9" ✓
Trunk, Aft ... ..	✓							
Trunk, Forward ... ..	✓							
Exposed Machinery Casings on Freeboard or Raised Quarter Decks ...	✓							
Exposed Machinery Casings on Superstructure Decks ... ..	✓							
Machinery Casings within Superstructures not fitted with Class I Closing Appliances ... ..	36 ✓	26 ✓	3+2 1/2+24 ✓	27" ✓	Deck bars	10 4'6"+19"	20" ✓	9' ✓
Deckhouses on Flush Deck Ships ...								

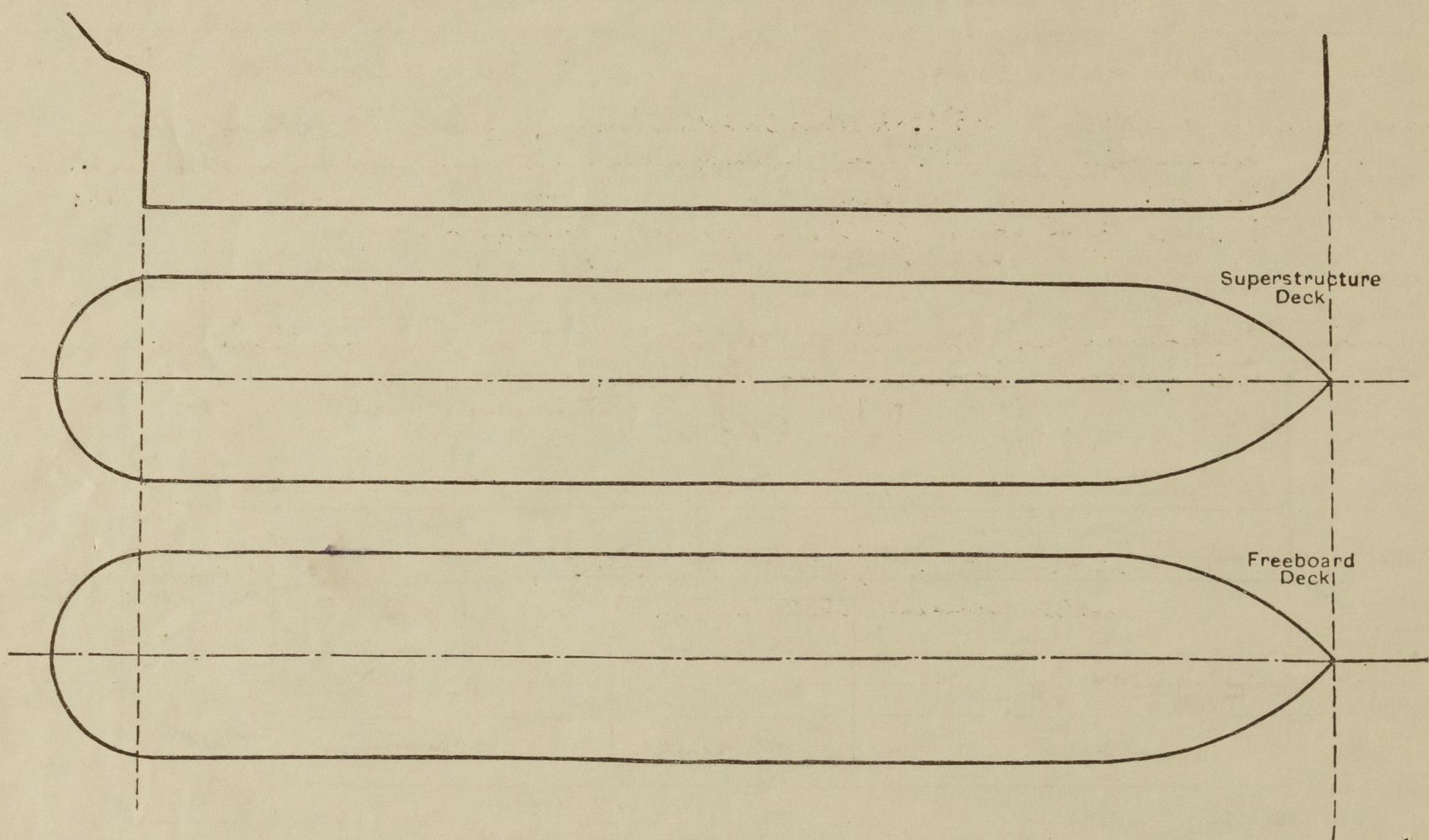
Particulars of Closing Appliances (state if capable of being manipulated from both sides).

Poop Bulkhead ... ..	<del>None</del> no openings.
Raised Quarter Deck Bulkhead ...	✓
Bridge, After Bulkhead ... ..	Shipping boards 2 1/2" thick in riveted channels ✓
Bridge, Forward Bulkhead ... ..	
Forecastle Bulkhead ... ..	3-lunged steel doors securing from either side ✓
Exposed Machinery Casings on Freeboard or Raised Quarter Decks ...	2- steel plates secured by hook bolts. ✓
Exposed Machinery Casings on Superstructure Decks ... ..	✓
Machinery Casings within Superstructures not fitted with Class I Closing Appliances ... ..	2-lunged steel door securing from either side ✓
Deckhouses on Flush Deck Ships ...	✓



# PARTICULARS OF PROTECTION TO OPENINGS, ETC.

The following diagrams should be used to indicate the positions of cargo and coaling hatchways, gangway, cargo and coaling ports, ventilators, companionways, etc., which would affect the seaworthiness of the ship:—



Particulars of fiddley, funnel and ventilator coamings, engine room skylight and other openings in machinery casing tops and their means of closing:—

Fiddley, funnel & ventilator coamings & engine room skylight of steel strongly constructed & fiddley openings protected by hinged steel covers!

Particulars of Flush Bunker Scuttles:—

None. ✓

Particulars of Companionways:—

Crew entrance in after deckhouse. Hinged steel door pack securing both sides 19" sill & Tunnel entrance in after deckhouse. Hinged steel door 4'6" x 20", 18" sill. ✓ Securing both sides!

Particulars of Ventilators in exposed positions on freeboard and superstructure decks:—

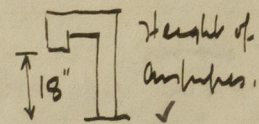
Fore Dk.	Fore Peak.	1-6" dia	30" high	30 thick	✓
"	Tween Dk.	2-6" "	30" "	30 "	✓
"	Hold "	3-20" "	30" "	40 "	✓
Upper Dk.	" "	3-20" "	30" "	40 "	✓
"	Tween Dk.	1-20" "	9' "	40 "	changed.
"	Steering Comp.	2-6" "	30" "	30 "	✓

All ventilation closed by wooden plugs & canvas covers. ✓

Deck ladders to holds in manthouses with strong steel built hoods in manthouse tops. ✓

Particulars of Air Pipes in exposed positions on freeboard, raised quarter, or superstructure decks:—

Fore Dk.	FP Tank.	1-2 1/2" dia.			
Upper Dk.	Cofferdam	1-2 1/2" "			
"	No 1 d/b tank	3-2 1/2" "			
"	No 2, 3, 4 "	6-4" "			
"	No 5 d/b "	4-3" "			
"	SRM Cofferdams	4-3" "			✓
"	No 6 d/b tank	2-4" "			
"	No 7 "	2-3" "			
"	AP Tank	1-3" "			
"	Old Fuel Bunkers & Sealing Tanks	4-3" dia.			



Airpipes to WB Tanks closed by wooden plugs. ✓  
Airpipes to OF Tanks closed by steel screwed caps with gauge. ✓

Particulars of Gangway Cargo and Coaling Ports:—

None.

Admiral Fraser

Particulars of Scuppers and Sanitary Discharge Pipes:—

Tween Decks. Tonnage Opening. 2-5" SOWR valves controlled from Upper Deck. Indicators fitted. ✓  
" Amidships. 4-2 1/2" dia scuppers down to BR bulge with self closing cocks. (2 to 2 st) ✓  
" Refrig Space Scav. 2-2" dia " " " liquid sealed caps. ✓  
" Steering Gear Comp. 2-2" dia down to engine room. ✓

Sanitary discharges from deckhouses led overboard thru knee deck shell. Storm valves at shell. ✓

Particulars of Side Scuttles:—

Side scuttles fitted in poop 10" dia each fitted with hinged deadlights. ✓

Vertical distance of Sill of lowest Side Scuttle above top of keel

29'

Particulars of Guard Rails:—

Fore deck. 2 rows quadrants 3'-3" high transverse 5' apart. ✓  
Upper Dk aft 3 " 3'-6" " 3'-9" " ✓  
Bulwarks. 3'-6" high. 25 thick. 6" transverse. 5' apart. ✓  
" 6 freeing ports each side 1' x 9' 3 1/2" above deck. ✓

Particulars of Gangways, Lifelines, etc.:—

None. ✓

## Particulars of Freeing Arrangements.

	Length of Bulwark	Height of Bulwark	Size of Freeing Ports	Number each side	Area each side	Rule area each side
Tonnage Hull Well	...	...	1-5" SOWR valve thru shell port & scanted.	✓		
Forward Well	...	...				
State position of each freeing port ... (After Well:— (F. and A. position and height above deck edge) (Forward Well:— State whether the freeing ports are fitted with shutters, bars, or rails, and give particulars of such:— Additional area where sheer is less than standard.						



# PARTICULARS OF PROTECTION TO OPENINGS, ETC.

HATCHWAYS ON FREEBOARD AND SUPERSTRUCTURE DECKS.											
Freeboard Dk											
Superstructure Deck											
Description of Hatchway	No 1	No 2 & 3	No 4	Trimming & Access	No 1	No 2 & 3	No 4	Fore Peak	Tonnage Opening	Fore Dk	
Dimensions of Hatchway	29'3" x 18'	29'3" x 18'	22'6" x 18'	16'-2" x 2" + 4'-2" x 18"	29'3" x 18'	29'3" x 18'	22'6" x 18'	3'9" x 2'6"	18' x 4'6"	3'6" x 2'	
COAMINGS	Height above Deck ... 9' + 3 1/2" = 40' 1/2" Thickness ... 3" Stiffeners ... Brackets, Stays ...				Height above Deck ... 30" Thickness ... 30" Stiffeners ... 30" Brackets, Stays ...						
HATCH BEAMS	Number ... 4 Spacing ... 5'-10" Scantling and Sketch ... Bearing Surface ... 3"				Number ... 4 Spacing ... 5'-10" Scantling and Sketch ... Bearing Surface ... 3"						
FORE AND AFTERS	Number ... Spacing ... Unsupported Lengths ... Scantling and Sketch ... Bearing Surface ...				Number ... Spacing ... Unsupported Lengths ... Scantling and Sketch ... Bearing Surface ...						
HATCH COVERS	Material ... WP Thickness ... 2 1/2" How fitted ... Laid in Bearing Surface ... 3"				Material ... WP Thickness ... 2 1/2" How fitted ... Laid in Bearing Surface ... 3"						
Spacing of Cleats	24"	24"	24"	Rubber packing secured by locking pins.	24"	24"	24"	16'-24"	Hemp	18'-24"	
Number of Tarpaulins	1	1	1		2	2	2	1	Lashings	4	
*Are wood fore and afters steel shod at all bearing surfaces? Yes Are battens and wedges efficient and in good condition? Yes Are tarpaulins in good condition and in accordance with rule requirements? Yes Are lashings provided in accordance with rule requirements? Locking bands.											

Particulars of any special features:— Other hatches:— Inside mainmasthouse. Access hatches on upper Dk. 1 fwd 1 aft to lower deck each 21" x 18". Coaming 9' x 38". Hinged steel lids with rubber jointing, secured by locking pins. Inside mainmasthouse:— Store hatch on upper deck 3' x 3'. 3" L coaming 2 1/2" wood cover. In steering compartment. Hatch on foreboard deck to peak line 18" x 21" 3" L coaming 2 1/2" cover.

Note:— The hatch lids are non sliding type which are lifted & transported by roller gear on top of bulk angle coaming. Provision is made for securing lids when stowed at ends of hatchway. Ends of wood hatch covers protected by galvanized steel bands efficiently secured.

Endorsement at first survey and at surveys for renewal of Certificate:— The fittings and appliances are in accordance with the particulars shown on this form (or as now modified) and are in good condition.