

N^os 1173 & 4^c. UPPER BRIDGE DECK.

SCALE: $\frac{1}{4}$ " = 1 FOOT. CODE N^o 112.

NOTE: CAMBER $14\frac{3}{4}$ " IN 59' 0".

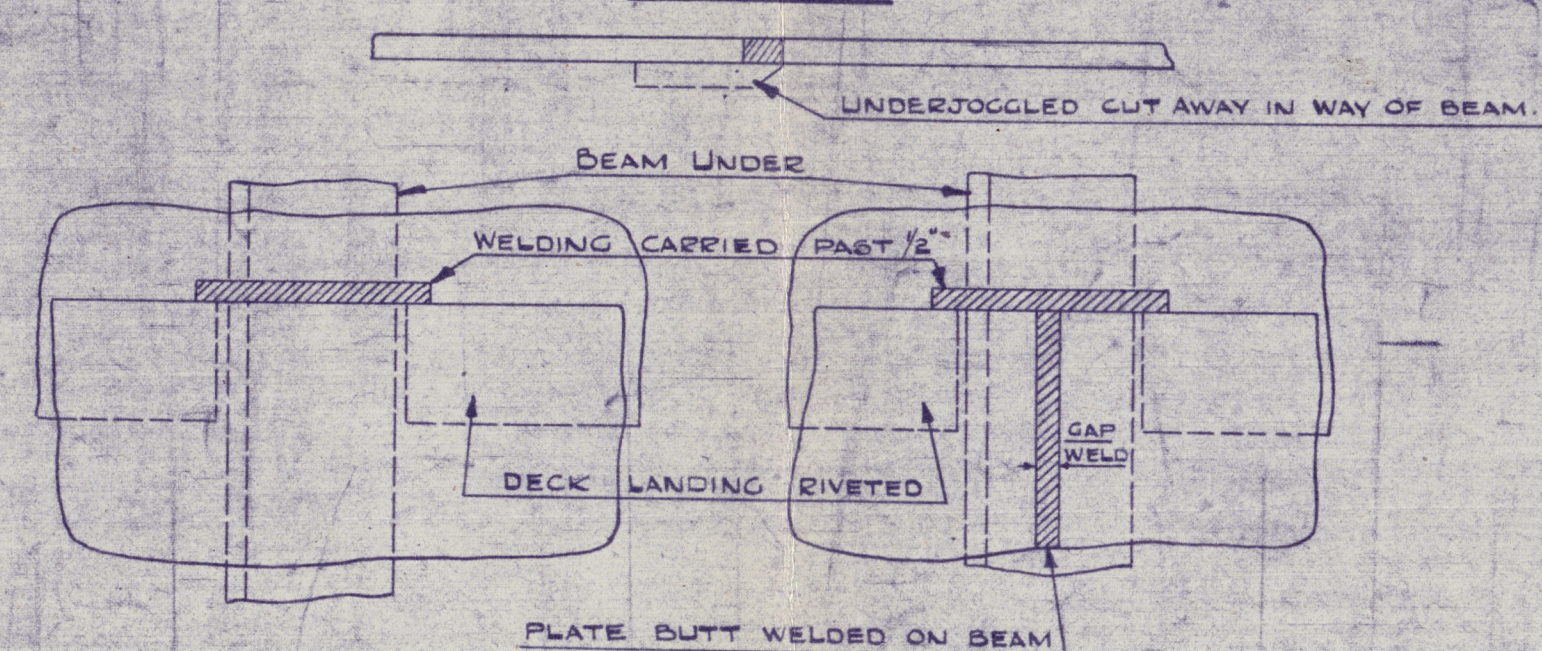
RIVETING LIST.

LOCATION	DIA ^r	PITCH	HEAD	POINT
BEAMS OF PLATING	$\frac{3}{8}$	$2\frac{1}{2}$	P	F
BEAMS TO DECK	$\frac{3}{8}$	$2\frac{1}{2}$	-	-
STRINGER BARD TO DECK	$\frac{3}{8}$	$2\frac{1}{2}$	-	-
HOUSE UNDER TO DECK	$\frac{3}{8}$	$2\frac{1}{2}$	-	-
GIRDER CHOCKS TO DECK	$\frac{3}{8}$	$2\frac{1}{2}$	-	-
GIRDER CHOCKS TO INT ^r PLATE	$\frac{3}{8}$	$2\frac{1}{2}$	-	-
GIRDER FACE BAR TO GIRDER	$\frac{3}{8}$	$2\frac{1}{2}$	-	-
STRINGER BAR TO CURTAIN PLATE	$\frac{3}{8}$	$2\frac{1}{2}$	-	-
BULWARK RAIL TO BULWARK	$\frac{3}{8}$	5	-	-
U. B. D. SUPPORTS TO CURTAIN PL.	$\frac{3}{8}$	TO SKETCH	-	-
PLATING BUTTS			WELDED	

MATERIAL ORDER.

MARK	N ^o OFF	LENGTH	SCANTLING	LOCATION
UB 9	24 BMS	14'-10"	6" x 3/8" x 50'	BEAMS
2	8	22'-4"		
3	3	25'-1"		
4	2	59'-1"		
5	2	41'-1"		
6	1	36'-7"		
7	1	10'-0"		FRAD
8	1	15'-0"	5" x 5" x 3/8"	LUGS
9	1	55'-0"	3/8" x 5/8" x 3/8"	GIRDER FACE BAR
10	1	32'-6"	5" x 5" x 3/8"	TO DECK
11	1	38'-8"	3/8" x 5/8" x 3/8"	FACE BAR
12	1	32'-6"	5" x 5" x 3/8"	TO DECK
13	2	26'-0"	5" x 5" x 3/8"	LUGS
14	1	14'-0"	6" x 3/8" x 5/8"	RUNNER
15	2	22'-0"	3/8" x 5/8" x 3/8"	FACE BAR
16	2	22'-0"	5" x 5" x 3/8"	TO DECK
17	1	27'-0"	3/8" x 5/8" x 3/8"	FACE BAR
18	1	27'-0"	5" x 5" x 3/8"	TO DECK
19	1	17'-6"	5" x 5" x 3/8"	STAIRWAY BOUNDARY
19 1/2	6	24'-0"	4" x 4" x 50'	UPPER B. D. SUPPORTS
20	1	32'-6"	3/8" x 5/8" x 3/8"	TO DECK
21	1	19'-6"	2 1/2" x 2 1/2" x 7/8"	RAIL BAR
22	7	30'-0"	5" x 5" x 3/8"	STRINGER BARS
23	1	55'-0"	5" x 5/8" x 3/8"	GIRDER ON C.

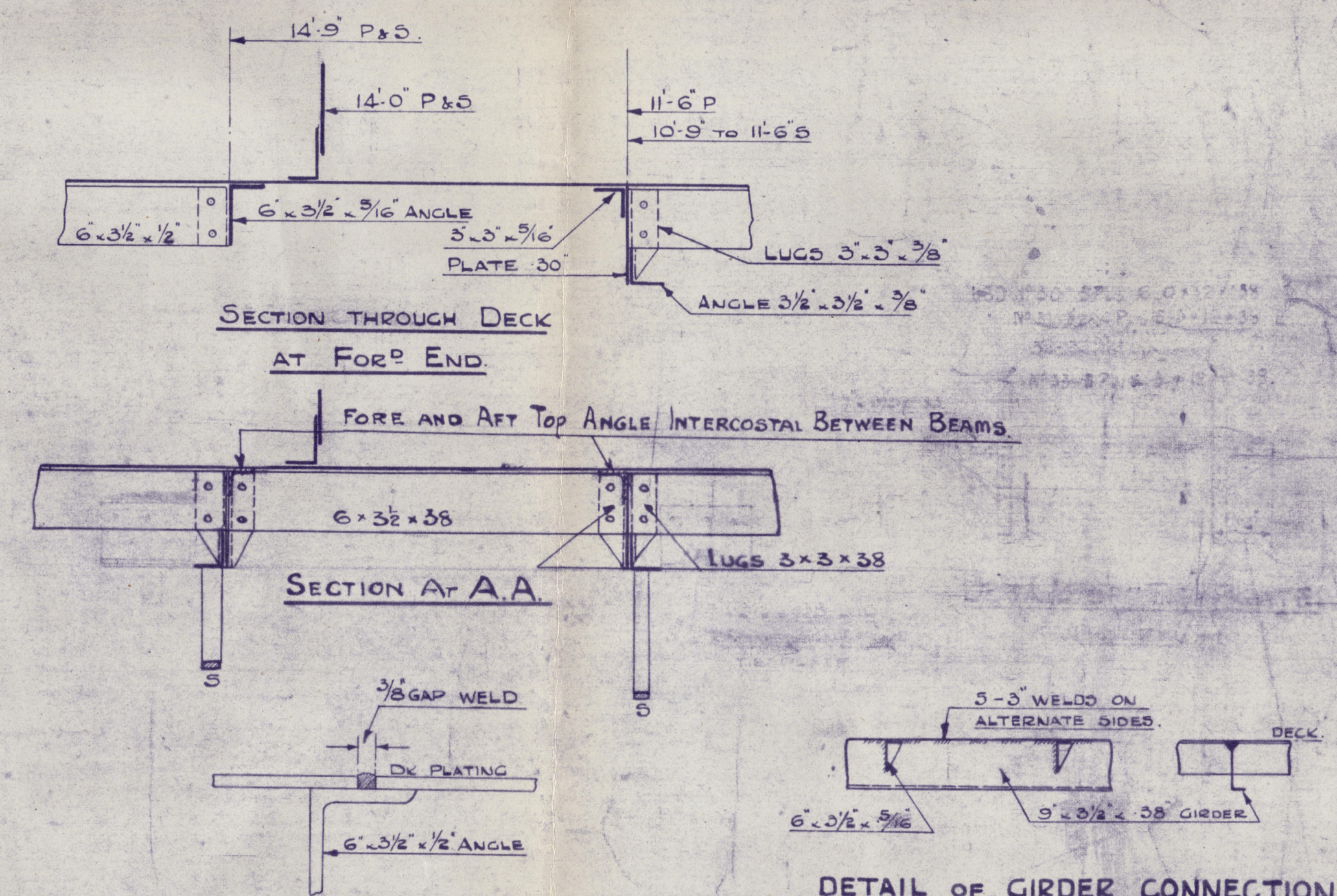
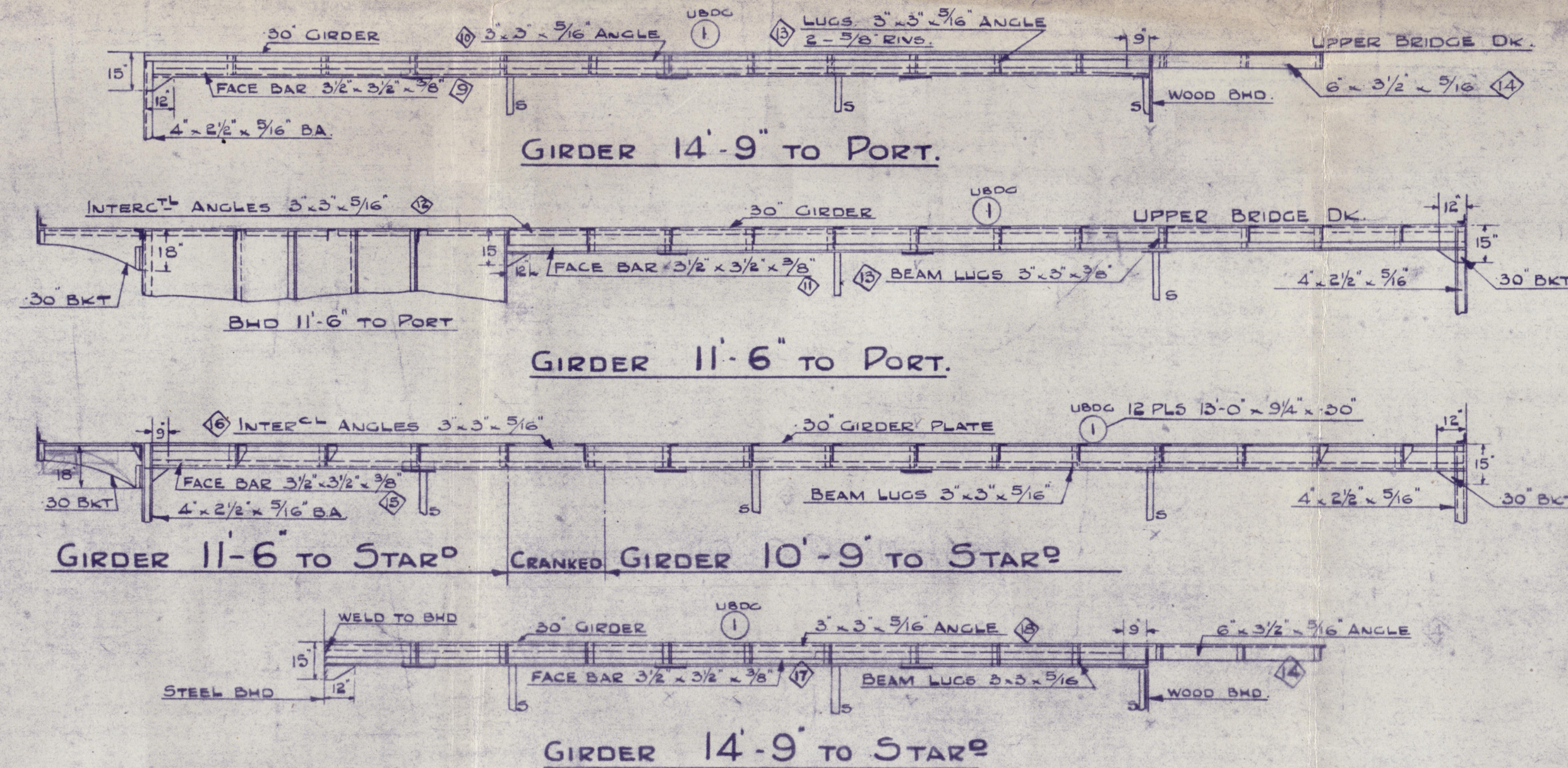
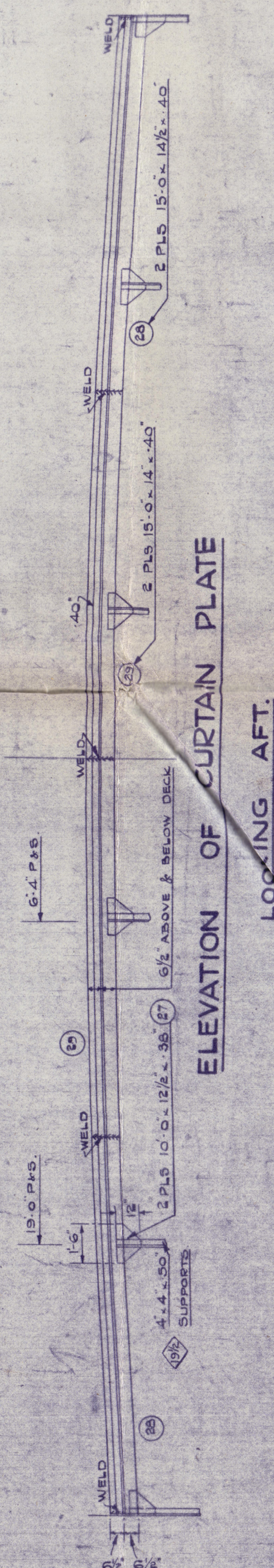
SECTION.



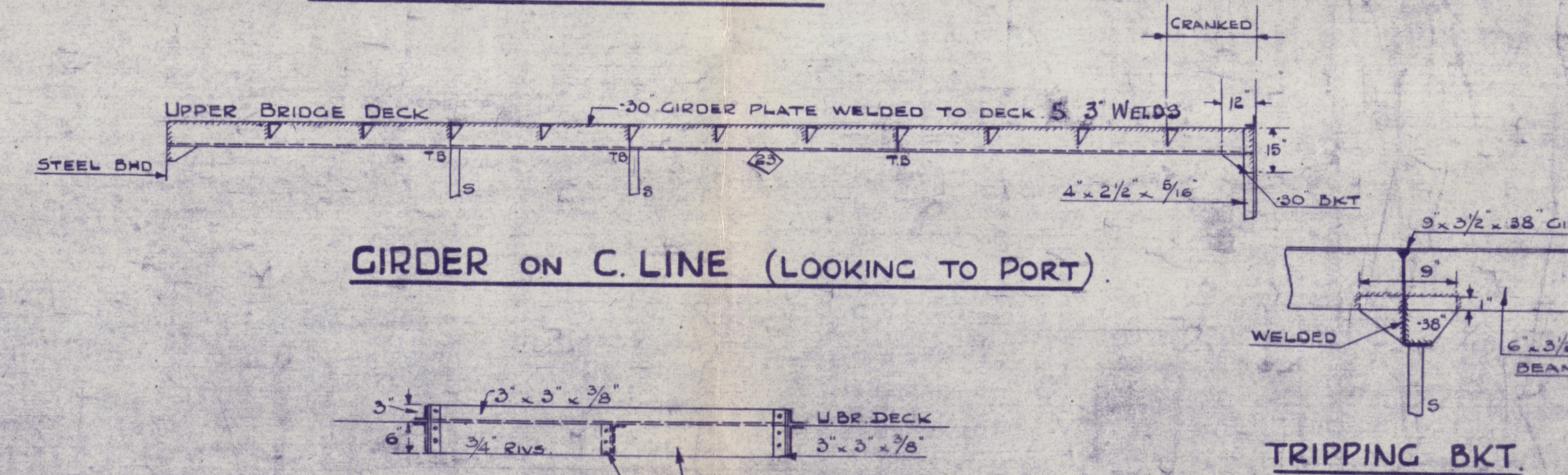
CLEAR OF BUTTS.

IN WAY OF BUTTS.

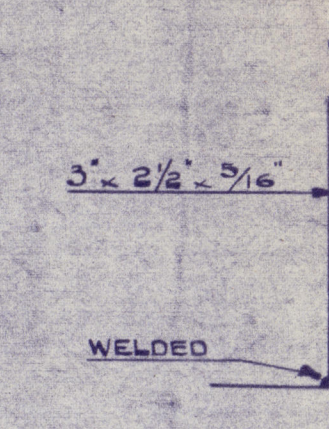
UNDERJOGGED STEEL DECK FLUSH IN WAY OF BEAMS.



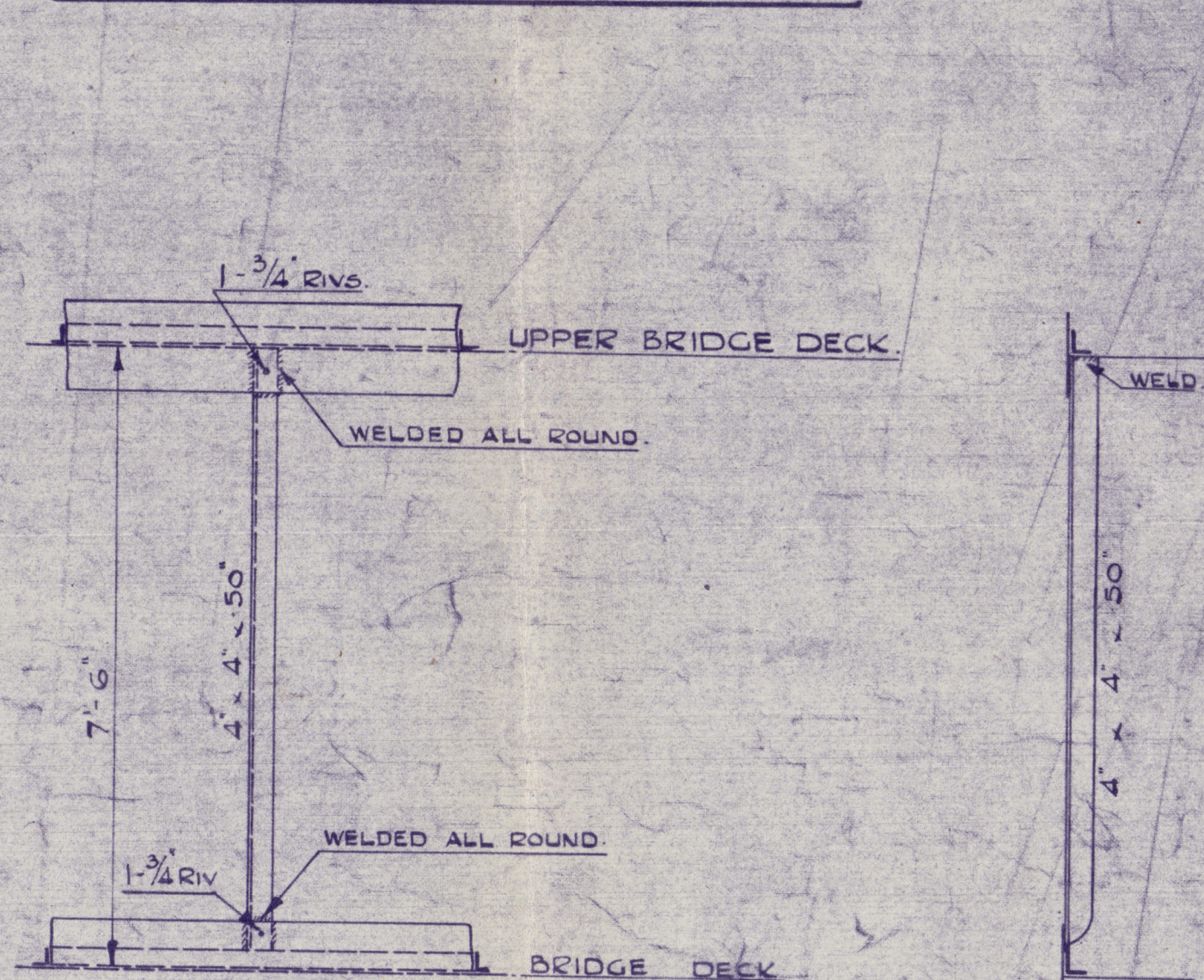
DETAIL OF WELDED BUTTS.



DETAIL OF COAMING ROUND STAIRWAY.



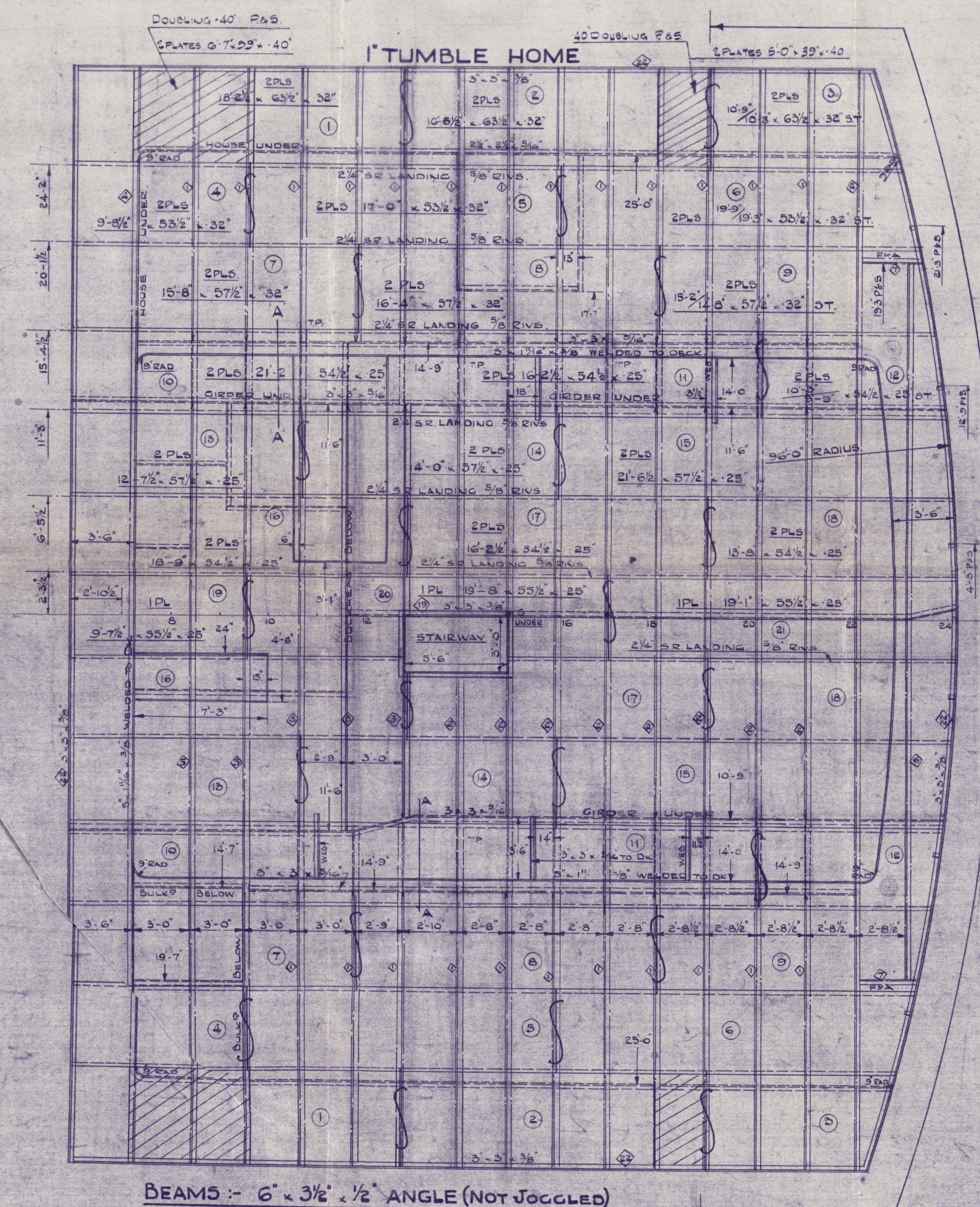
ALTERNATE BULWARK STIFFERS



ELEVATION

SECTION LOOKING AFT.

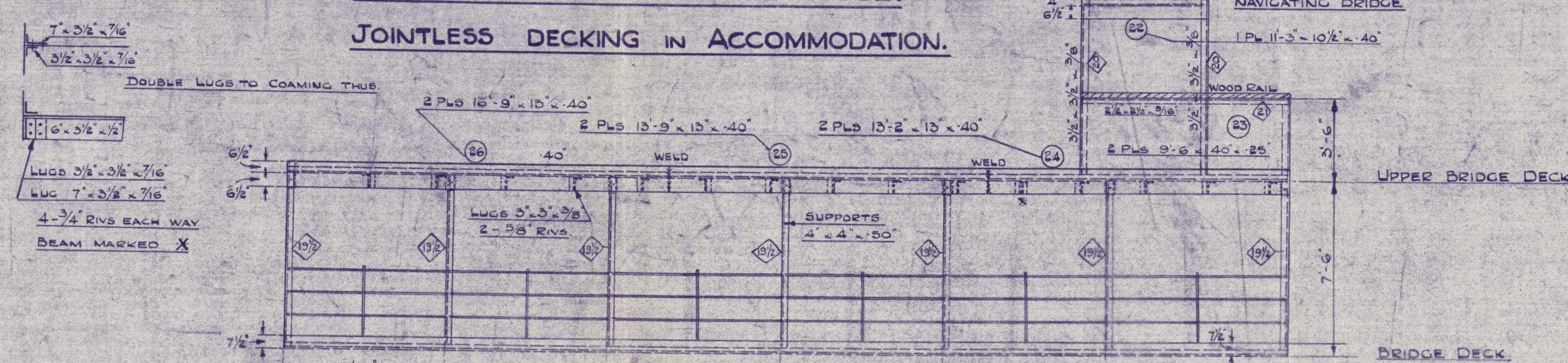
DETAIL OF SUPPORT BRACKETS.



BEAMS: 6" x 3/8" x 1/2" ANGLE (NOT JOGGED)

ASPHALT ON DECK OUTSIDE HOUSE.

JOINTLESS DECKING IN ACCOMMODATION.



ELEVATION OF UPPER BRIDGE DECK SUPPORTS & CURTAIN PLATE

~~187~~
~~187~~
HARLAND & WOLFF LTD.
BELFAST

No. 1193/49

TITLE. upper Bridge Deck

DATE APPROVED. 24/3/43

Belfast Report No. 13536 - Nancea



13



002989-002996-0054

Lloyd's Register
Foundation